

Converting Colors

Hex(E2B3BD)

Have a look what the booklet for
Hex(E2B3BD) contains.

Hex(E2B3BD)	3
<i>Conversions</i>	4
<i>Details</i>	6
<i>Harmonies</i>	11
<i>Previews</i>	23
<i>Color Blindness Simulation</i>	26
<i>CSS Examples</i>	29

Color

Hex(E2B3BD)

Conversions

Conversions Part 1

Format	Color
Hex	E2B3BD
RGB	226, 179, 189
RGB Percent	89%, 70%, 74%
CMY	0.1137, 0.2980, 0.2588
CMYK	0.00, 0.21, 0.16, 0.11
HSL	347°, 45%, 79%
HSV	347°, 21%, 89%
XYZ	56.6694, 52.0831, 55.2103
YIQ	194.1930, 24.8020, 13.0740

Conversions

Conversions Part 2

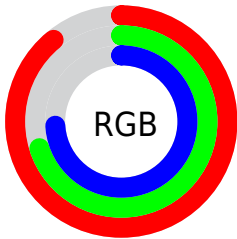
Format	Color
R _Y B	226, 179, 189
Decimal	14857149
CIE _{Lab}	77.33, 18.54, 1.43
CIE _{LCh}	77, 18.599, 4.412
Y _{xy}	52.0831, 0.3456, 0.3177
Android (android.graphics.Color)	4293047229 (0xFFE2B3BD)
YUV	194.1930, -2.5601, 27.8947
Hunter-Lab	72.1686, 13.8697, 5.1600

Details

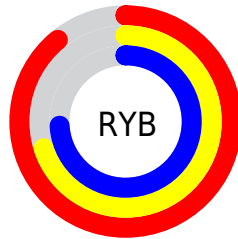
The Hex color **E2B3BD** is a light color, and the websafe version is hex **FFCCCC**. A complement of this color would be **B3E2D8**, and the grayscale version is **C2C2C2**.

A 20% lighter version of the original color is **FFEBF5**, and **AA7E88** is the 20% darker color. If you saturate the color by 10%, you get **E29CAB**, and if you desaturate by 10%, it is **E2CACF**.

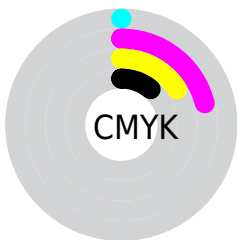
Distribution



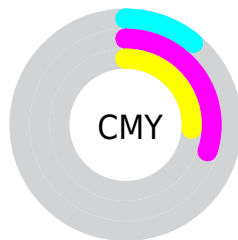
- Red (89%)
- Green (70%)
- Blue (74%)



- Red (89%)
- Yellow (70%)
- Blue (74%)



- Cyan (0%)
- Magenta (21%)
- Yellow (16%)
- Black (11%)



- Cyan (11%)
- Magenta (30%)
- Yellow (26%)

Brightness & Saturation Gradients

These gradients show how the Hex color E2B3BD changes by changing the brightness by 10 percent. The first figure shows a shift by +10% for each color and the second figure -10%.

Similar to the brightness gradients but the following saturation gradients show a change of the Hex color E2B3BD by changing the saturation by 10% instead.

 E2B3BD

FFFFFF

 FFEBF5

 E2B3BD

 C698A2

 AA7E88

 8F656E

 754D56

 5C353F

 431F29

 2C0A15

 110000

 000000

 E2B3BD

 E2B3BD

 E29CAB

 E2CACF

 E28699

 E2E0E1

 E26F88

 E2F7F2

 E25976

 E2FFFF

 E24264

 E22B52

 E21540

 E20030

Harmonies

Analogous

The Analogous color harmony consists of three colors that are next to each other on the color wheel.



D8B5CE



E2B3BD



E2B5AC

Triad

The Triadic color harmony groups three colors that are evenly spaced from another and form a triangle on the color wheel.



E2B3BD



B7C4A2



9BC5DE

Complementary

The Complementary color scheme is a pair of colors which are on the opposite of each other on the color wheel.



E2B3BD



B3E2D8

Split Complementary

Split-complementary colors differ from the complementary color scheme. The scheme consists of three colors, the original color and two neighbors of the complement color.



91C8D2



E2B3BD



A3C8B0

Square

The Square scheme is like the rectangle color scheme, but the four colors are evenly spaced on the color wheel.



E2B3BD



CABF9D



95C9C1



AFC0E1

Rectangle

The Rectangle color scheme consists of four colors that form a rectangle on the color wheel.



E2B3BD



DDB7A4



95C9C1



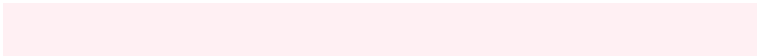
97C6DA

Sweetspot

The Sweet Spot groups the original color and five complimentary colors.



E2B3BD



FFF0F3



D8B3E2



807778



000000



808080

Same Dimension

The Same Dimension uses a secret algorithm to generate beautiful new colors.



E2B3BD



FFBFCD



E2C0B3



706567



B00025



30000A

Inverse Universe

The Inverse Universe completely reimagines the original color for something new.



E2B3BD



FFBFCD



B3D5E2



706567



B00025



30000A

Previews

White Background



This preview shows how the Hex color E2B3BD looks on a white background.

Color Contrast Check

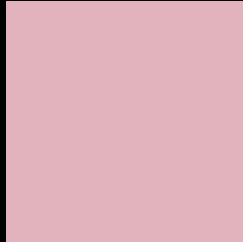
Large Text (above 18pt) WCAG AA × Fail

Any Text WCAG AA × Fail

Large Text (above 18pt) WCAG AAA × Fail

Any Text WCAG AAA × Fail

Black Background



This preview shows how the Hex color E2B3BD looks on a black background.

Color Contrast Check

Large Text (above 18pt) WCAG AA ✓ Pass

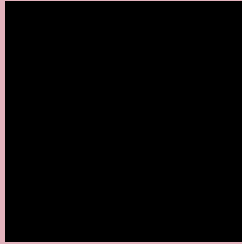
Any Text WCAG AA ✓ Pass

Large Text (above 18pt) WCAG AAA ✓ Pass

Any Text WCAG AAA ✓ Pass

If you want to check with other color combinations, try the [Color Contrast Checker](#).

Hex E2B3BD Background



This preview shows how black text looks on a background with the Hex color E2B3BD.

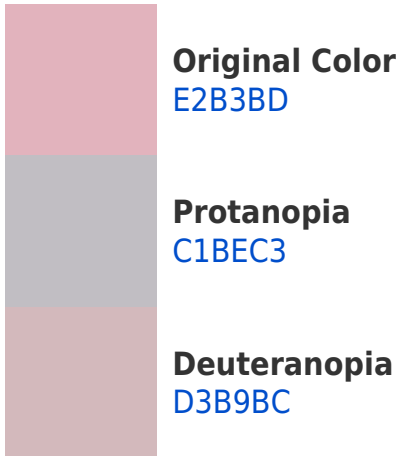


This preview shows how white text looks on a background with the Hex color E2B3BD.

Color Blindness Simulation

Color vision deficiency is a very complex topic, and I could not describe the different causes any better than Wikipedia does, so if you want to learn more, you should check out their [article about color blindness](#).

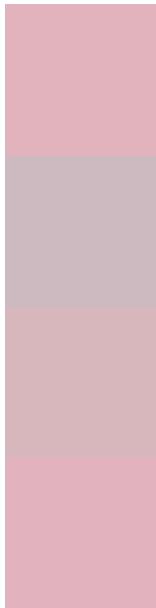
Dichromacy





Tritanopia
E2B2C0

Trichromacy



Original Color
E2B3BD

Protanomaly
CDBAC1

Deuteranomaly
D8B7BC

Tritanomaly
E2B2BF

Monochromacy



Original Color
E2B3BD

Achromatopsia
C2C2C2

Achromatomaly
CEBDC0

CSS Examples

Text

The CSS property to change the color of the text to Hex E2B3BD is called "color". The color property can be set on classes, ids or directly on the HTML element.

This example shows how text in the color #E2B3BD looks like.

```
.text, #text, p{  
    color:#E2B3BD  
}
```

If you want to add a text shadow in that color use the text-shadow property, you can generate a text shadow directly with our [CSS Text Shadow Generator](#).

Here you see how black text with a 4 pixel #E2B3BD colored shadow looks like.

```
.shadow{ text-shadow: 4px 4px 2px #E2B3BD
}
```

Border

The CSS property to change the border of an element to Hex E2B3BD is called "border". The border property can be set on classes, ids or directly on the HTML element.

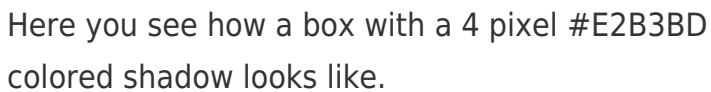
This example shows the color as border, it can be applied via the CSS property "border" or "border-color".

```
.border, #border, table{ border:4px solid
#E2B3BD }
```

If only the border color should be changed use the property `border-color`.

```
.border{ border-color:#E2B3BD }
```

If you want to add a box shadow in that color use:



Here you see how a box with a 4 pixel #E2B3BD colored shadow looks like.

```
.boxshadow{ -moz-box-shadow:4px 4px 4px  
4px #E2B3BD; -webkit-box-shadow:4px 4px  
4px 4px #E2B3BD; box-shadow:4px 4px 4px  
4px #E2B3BD }
```

Background

The CSS property to change the background color of an element to Hex E2B3BD is called "background". The background property can be set on classes, ids or directly on the HTML element.

```
.background, #background, body{  
background:#E2B3BD }
```

If only the background color should be changed can be used:

```
.background{ background-color:#E2B3BD }
```

This example shows the color as background, it is applied via the CSS property "background".

To optimize and compress your CSS code, you can use our [online CSS compressor and optimizer](#) based on csstidy. If you want to create a linear or radial gradient as background or border, check our [CSS Gradient Generator](#).

Hey! You found this booklet interesting? Support Converting Colors with the new Membership Option!

The pro membership hides all ads, plus gives you double the colors in the color bucket, and more awesome pro features!

[Learn more, Memberships starting at \\$2.50/m!](#)

**Follow me
on Twitter!**

@ConvertingColor