

# Converting Colors

Hex(E2B3D7)

Have a look what the booklet for  
Hex(E2B3D7) contains.

<b>Hex(E2B3D7)</b> .....	3
<b><i>Conversions</i></b> .....	4
<b><i>Details</i></b> .....	6
<b><i>Harmonies</i></b> .....	11
<b><i>Previews</i></b> .....	23
<b><i>Color Blindness Simulation</i></b> .....	26
<b><i>CSS Examples</i></b> .....	29

# **Color**

**Hex(E2B3D7)**

# Conversions

## Conversions Part 1

<b>Format</b>	<b>Color</b>
Hex	E2B3D7
RGB	226, 179, 215
RGB Percent	89%, 70%, 84%
CMY	0.1137, 0.2980, 0.1569
CMYK	0.00, 0.21, 0.05, 0.11
HSL	314°, 45%, 79%
HSV	314°, 21%, 89%
XYZ	59.7499, 53.3152, 71.4317
YIQ	197.1570, 16.4560, 21.1600

# Conversions

## Conversions Part 2

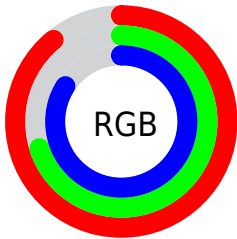
<b>Format</b>	<b>Color</b>
R <sub>Y</sub> B	226, 179, 215
Decimal	14857175
CIE <sub>Lab</sub>	78.06, 22.89, -11.61
CIE <sub>LCh</sub>	78, 25.663, 333.104
Yxy	53.3152, 0.3239, 0.2890
Android (android.graphics.Color)	4293047255 (0xFFE2B3D7)
YUV	197.1570, 8.7966, 25.2953
Hunter-Lab	73.0173, 18.2859, -6.8904

# Details

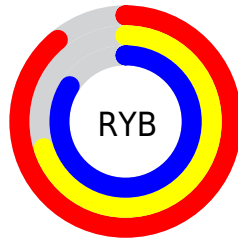
The Hex color **E2B3D7** is a light color, and the websafe version is hex **CC99CC**. A complement of this color would be **B3E2BE**, and the grayscale version is **C5C5C5**.

A 20% lighter version of the original color is **FFEBFF**, and **AA7EA0** is the 20% darker color. If you saturate the color by 10%, you get **E29CD2**, and if you desaturate by 10%, it is **E2CADC**.

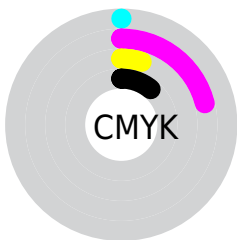
# Distribution



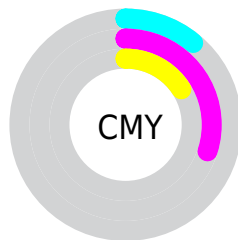
- Red (89%)
- Green (70%)
- Blue (84%)



- Red (89%)
- Yellow (70%)
- Blue (84%)



- Cyan (0%)
- Magenta (21%)
- Yellow (5%)
- Black (11%)



- Cyan (11%)
- Magenta (30%)
- Yellow (16%)

# Brightness & Saturation Gradients

These gradients show how the Hex color E2B3D7 changes by changing the brightness by 10 percent. The first figure shows a shift by +10% for each color and the second figure -10%.

Similar to the brightness gradients but the following saturation gradients show a change of the Hex color E2B3D7 by changing the saturation by 10% instead.



 E2B3D7

FFFFFF

 FFE8FF

 E2B3D7

 C698BB

 AA7EA0

 8F6586

 754C6D

 5C3554

 441F3D

 2D0927

 170013

 000000

 E2B3D7

 E2B3D7

 E29CD2

 E2CADC

 E286CC

 E2E0E2

 E26FC7

 E2F7E7

 E259C2

 E2FFEC

 E242BD

 E2FFF1

 E22BB7

 E2FFF7

 E215B2

 E2FFFC

 E200AD

 E2FFFF

# Harmonies

## Analogous

The Analogous color harmony consists of three colors that are next to each other on the color wheel.



C8BAE9



E2B3D7



F0B0BF

# Triad

The Triadic color harmony groups three colors that are evenly spaced from another and form a triangle on the color wheel.



E2B3D7



D0C092



7DCEDA

# Complementary

The Complementary color scheme is a pair of colors which are on the opposite of each other on the color wheel.



E2B3D7



B3E2BE

# Split Complementary

Split-complementary colors differ from the complementary color scheme. The scheme consists of three colors, the original color and two neighbors of the complement color.



85CFC3



E2B3D7



B6C799

# Square

The Square scheme is like the rectangle color scheme, but the four colors are evenly spaced on the color wheel.



E2B3D7



E5B897



9BCCAB



8AC9EB

# Rectangle

The Rectangle color scheme consists of four colors that form a rectangle on the color wheel.



E2B3D7



F2B1AF



9BCCAB



7DCED3



# Sweetspot

The Sweet Spot groups the original color and five complimentary colors.



E2B3D7



FFF0FB



BEB3E2



80777D



000000



808080



# Same Dimension

The Same Dimension uses a secret algorithm to generate beautiful new colors.



E2B3D7



FFBFF0



E2B3C0



70656E



B00087



300025



# Inverse Universe

The Inverse Universe completely reimagines the original color for something new.



E2B3D7



FFBFF0



B3E2D5



70656E



B00087

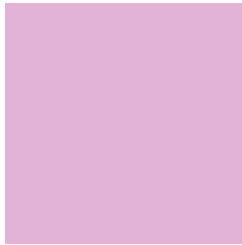


300025



# Previews

## White Background



This preview shows how the Hex color E2B3D7 looks on a white background.

## Color Contrast Check

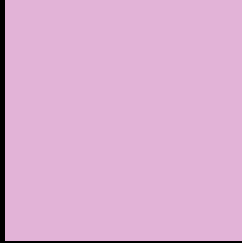
Large Text (above 18pt) WCAG AA × Fail

Any Text WCAG AA × Fail

Large Text (above 18pt) WCAG AAA × Fail

Any Text WCAG AAA × Fail

# Black Background



This preview shows how the Hex color E2B3D7 looks on a black background.

## Color Contrast Check

Large Text (above 18pt) WCAG AA ✓ Pass

Any Text WCAG AA ✓ Pass

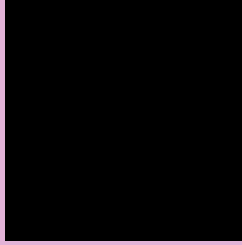
Large Text (above 18pt) WCAG AAA ✓ Pass

Any Text WCAG AAA ✓ Pass

If you want to check with other color combinations, try the [Color Contrast Checker](#).



## Hex E2B3D7 Background



This preview shows how black text looks on a background with the Hex color E2B3D7.

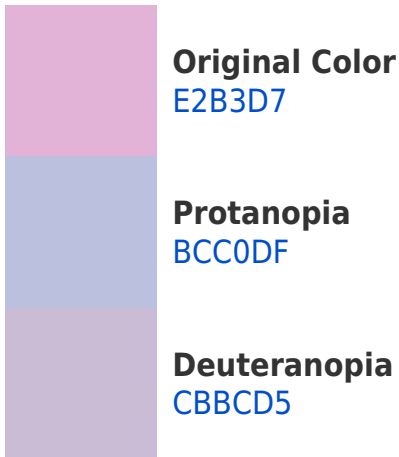


This preview shows how white text looks on a background with the Hex color E2B3D7.

# Color Blindness Simulation

Color vision deficiency is a very complex topic, and I could not describe the different causes any better than Wikipedia does, so if you want to learn more, you should check out their [article about color blindness](#).

## Dichromacy





**Tritanopia**  
DFB6C4

# Trichromacy



**Original Color**  
E2B3D7



**Protanomaly**  
CABBDC



**Deuteranomaly**  
D3B9D6

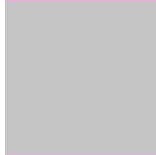


**Tritanomaly**  
E0B5CB

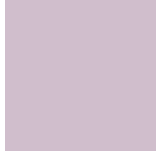
# Monochromacy



**Original Color**  
E2B3D7



**Achromatopsia**  
C5C5C5



**Achromatomaly**  
D0BECC

# CSS Examples

## Text

The CSS property to change the color of the text to Hex E2B3D7 is called "color". The color property can be set on classes, ids or directly on the HTML element.

This example shows how text in the color #E2B3D7 looks like.

```
.text, #text, p{  
    color:#E2B3D7  
}
```

If you want to add a text shadow in that color use the text-shadow property, you can generate a text shadow directly with our [CSS Text Shadow Generator](#).

Here you see how black text with a 4 pixel #E2B3D7 colored shadow looks like.

```
.shadow{ text-shadow: 4px 4px 2px #E2B3D7
}
```

## Border

The CSS property to change the border of an element to Hex E2B3D7 is called "border". The border property can be set on classes, ids or directly on the HTML element.

This example shows the color as border, it can be applied via the CSS property "border" or "border-color".

```
.border, #border, table{ border:4px solid
#E2B3D7 }
```

If only the border color should be changed use the property `border-color`.

```
.border{ border-color:#E2B3D7 }
```

If you want to add a box shadow in that color use:

Here you see how a box with a 4 pixel #E2B3D7 colored shadow looks like.

```
.boxshadow{ -moz-box-shadow:4px 4px 4px  
4px #E2B3D7; -webkit-box-shadow:4px 4px  
4px 4px #E2B3D7; box-shadow:4px 4px 4px  
4px #E2B3D7 }
```

# Background

The CSS property to change the background color of an element to Hex E2B3D7 is called "background". The background property can be set on classes, ids or directly on the HTML element.

```
.background, #background, body{  
background:#E2B3D7 }
```

If only the background color should be changed can be used:

```
.background{ background-color:#E2B3D7 }
```

This example shows the color as background, it is applied via the CSS property "background".

To optimize and compress your CSS code, you can use our [online CSS compressor and optimizer](#) based on csstidy. If you want to create a linear or radial gradient as background or border, check our [CSS Gradient Generator](#).



Hey! You found this booklet interesting? Support Converting Colors with the new Membership Option!

The pro membership hides all ads, plus gives you double the colors in the color bucket, and more awesome pro features!

**[Learn more, Memberships starting at \\$2.50/m!](#)**

**Follow me  
on Twitter!**

@ConvertingColor