

Converting Colors

Hex(E2B6AB)

Have a look what the booklet for
Hex(E2B6AB) contains.

Hex(E2B6AB)	3
<i>Conversions</i>	4
<i>Details</i>	6
<i>Harmonies</i>	11
<i>Previews</i>	23
<i>Color Blindness Simulation</i>	26
<i>CSS Examples</i>	29

Color

Hex(E2B6AB)

Conversions

Conversions Part 1

Format	Color
Hex	E2B6AB
RGB	226, 182, 171
RGB Percent	89%, 71%, 67%
CMY	0.1137, 0.2863, 0.3294
CMYK	0.00, 0.19, 0.24, 0.11
HSL	12°, 49%, 78%
HSV	12°, 24%, 89%
XYZ	55.4427, 52.5649, 45.7520
YIQ	193.9020, 29.7550, 5.9070

Conversions

Conversions Part 2

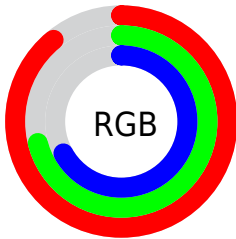
Format	Color
RYB	226, 185, 171
Decimal	14857899
CIELab	77.62, 14.25, 11.61
CIELCh	78, 18.378, 39.172
Yxy	52.5649, 0.3606, 0.3419
Android (android.graphics.Color)	4293047979 (0xFFE2B6AB)
YUV	193.9020, -11.2907, 28.1499
Hunter-Lab	72.5017, 9.6226, 13.3364

Details

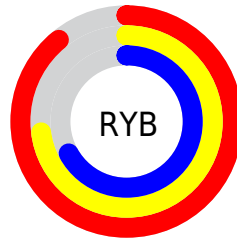
The Hex color **E2B6AB** is a light color, and the websafe version is hex **FFCCCC**. A complement of this color would be **ABD7E2**, and the grayscale version is **C2C2C2**.

A 20% lighter version of the original color is **FFEEE2**, and **AA8177** is the 20% darker color. If you saturate the color by 10%, you get **E2A494**, and if you desaturate by 10%, it is **E2C8C2**.

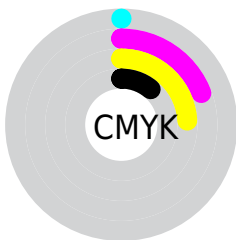
Distribution



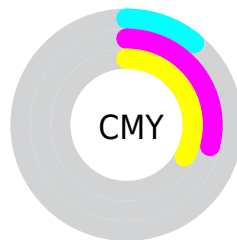
- Red (89%)
- Green (71%)
- Blue (67%)



- Red (89%)
- Yellow (73%)
- Blue (67%)



- Cyan (0%)
- Magenta (19%)
- Yellow (24%)
- Black (11%)



- Cyan (11%)
- Magenta (29%)
- Yellow (33%)

Brightness & Saturation Gradients

These gradients show how the Hex color E2B6AB changes by changing the brightness by 10 percent. The first figure shows a shift by +10% for each color and the second figure -10%.

Similar to the brightness gradients but the following saturation gradients show a change of the Hex color E2B6AB by changing the saturation by 10% instead.

 E2B6AB

 E2B6AB

FFFFFF

 C69B90

 FFEED2

 AA8177

 8F685E

 755046

 5B3830

 42231B

 2C0E00

 0A0000

 000000

 E2B6AB

 E2B6AB

 E2A494

 E2C8C2

 E2927E

 E2DAD8

 E28067

 E2ECEF

 E26E51

 E2FEFF

 E25C3A

 E2FFFF

 E24A23

 E2370D

 E22D00

Harmonies

Analogous

The Analogous color harmony consists of three colors that are next to each other on the color wheel.



E3B4BB



E2B6AB



D8BBA0

Triad

The Triadic color harmony groups three colors that are evenly spaced from another and form a triangle on the color wheel.



E2B6AB



A2C9B3



B4BFE1

Complementary

The Complementary color scheme is a pair of colors which are on the opposite of each other on the color wheel.



E2B6AB



ABD7E2

Split Complementary

Split-complementary colors differ from the complementary color scheme. The scheme consists of three colors, the original color and two neighbors of the complement color.



9FC5DF



E2B6AB



95CAC5

Square

The Square scheme is like the rectangle color scheme, but the four colors are evenly spaced on the color wheel.



E2B6AB



B4C5A5



94C8D5



C9BADA

Rectangle

The Rectangle color scheme consists of four colors that form a rectangle on the color wheel.



E2B6AB



CEBE9E



94C8D5



ACC1E1

Sweetspot

The Sweet Spot groups the original color and five complimentary colors.



E2B6AB



FFF1ED



E2ABD7



807775



000000



808080

Same Dimension

The Same Dimension uses a secret algorithm to generate beautiful new colors.



E2B6AB



FFC4B5



E2D1AB



706765



B02300



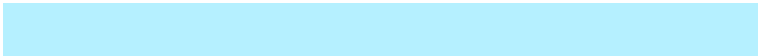
300A00

Inverse Universe

The Inverse Universe completely reimagines the original color for something new.



ABD7E2



B5F0FF



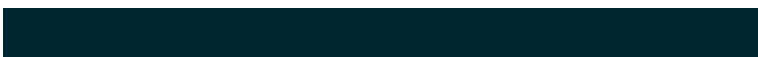
ABBBE2



656E70



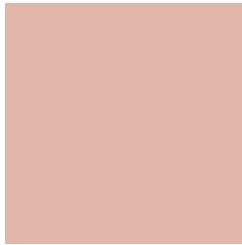
008DB0



002730

Previews

White Background



This preview shows how the Hex color E2B6AB looks on a white background.

Color Contrast Check

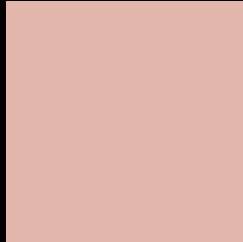
Large Text (above 18pt) WCAG AA × Fail

Any Text WCAG AA × Fail

Large Text (above 18pt) WCAG AAA × Fail

Any Text WCAG AAA × Fail

Black Background



This preview shows how the Hex color E2B6AB looks on a black background.

Color Contrast Check

Large Text (above 18pt) WCAG AA ✓ Pass

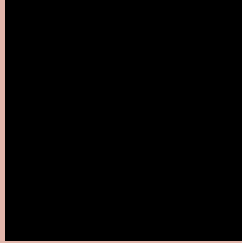
Any Text WCAG AA ✓ Pass

Large Text (above 18pt) WCAG AAA ✓ Pass

Any Text WCAG AAA ✓ Pass

If you want to check with other color combinations, try the [Color Contrast Checker](#).

Hex E2B6AB Background



This preview shows how black text looks on a background with the Hex color E2B6AB.

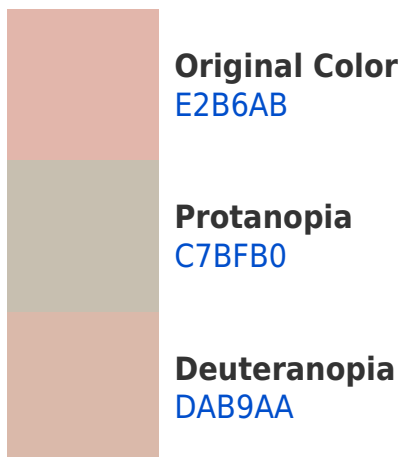


This preview shows how white text looks on a background with the Hex color E2B6AB.

Color Blindness Simulation

Color vision deficiency is a very complex topic, and I could not describe the different causes any better than Wikipedia does, so if you want to learn more, you should check out their [article about color blindness](#).

Dichromacy





Tritanopia
E4B3C1

Trichromacy



Original Color
E2B6AB

Protanomaly
D1BCAE

Deuteranomaly
DDB8AA

Tritanomaly
E3B4B9

Monochromacy



Original Color
E2B6AB

Achromatopsia
C2C2C2

Achromatomaly
CEBEBA

CSS Examples

Text

The CSS property to change the color of the text to Hex E2B6AB is called "color". The color property can be set on classes, ids or directly on the HTML element.

This example shows how text in the color #E2B6AB looks like.

```
.text, #text, p{  
    color:#E2B6AB  
}
```

If you want to add a text shadow in that color use the text-shadow property, you can generate a text shadow directly with our [CSS Text Shadow Generator](#).

Here you see how black text with a 4 pixel #E2B6AB colored shadow looks like.

```
.shadow{ text-shadow: 4px 4px 2px #E2B6AB
}
```

Border

The CSS property to change the border of an element to Hex E2B6AB is called "border". The border property can be set on classes, ids or directly on the HTML element.

This example shows the color as border, it can be applied via the CSS property "border" or "border-color".

```
.border, #border, table{ border:4px solid
#E2B6AB }
```

If only the border color should be changed use the property `border-color`.

```
.border{ border-color:#E2B6AB }
```

If you want to add a box shadow in that color use:

Here you see how a box with a 4 pixel #E2B6AB colored shadow looks like.

```
.boxshadow{ -moz-box-shadow:4px 4px 4px  
4px #E2B6AB; -webkit-box-shadow:4px 4px  
4px 4px #E2B6AB; box-shadow:4px 4px 4px  
4px #E2B6AB }
```

Background

The CSS property to change the background color of an element to Hex E2B6AB is called "background". The background property can be set on classes, ids or directly on the HTML element.

```
.background, #background, body{  
background:#E2B6AB }
```

If only the background color should be changed can be used:

```
.background{ background-color:#E2B6AB }
```

This example shows the color as background, it is applied via the CSS property "background".

To optimize and compress your CSS code, you can use our [online CSS compressor and optimizer](#) based on csstidy. If you want to create a linear or radial gradient as background or border, check our [CSS Gradient Generator](#).

Hey! You found this booklet interesting? Support Converting Colors with the new Membership Option!

The pro membership hides all ads, plus gives you double the colors in the color bucket, and more awesome pro features!

[Learn more, Memberships starting at \\$2.50/m!](#)

**Follow me
on Twitter!**

@ConvertingColor