

Converting Colors

Hex(E2B6C0)

Have a look what the booklet for
Hex(E2B6C0) contains.

Hex(E2B6C0)	3
<i>Conversions</i>	4
<i>Details</i>	6
<i>Harmonies</i>	11
<i>Previews</i>	23
<i>Color Blindness Simulation</i>	26
<i>CSS Examples</i>	29

Color

Hex(E2B6C0)

Conversions

Conversions Part 1

Format	Color
Hex	E2B6C0
RGB	226, 182, 192
RGB Percent	89%, 71%, 75%
CMY	0.1137, 0.2863, 0.2471
CMYK	0.00, 0.19, 0.15, 0.11
HSL	346°, 43%, 80%
HSV	346°, 19%, 89%
XYZ	57.6064, 53.4304, 57.1461
YIQ	196.2960, 23.0140, 12.4380

Conversions

Conversions Part 2

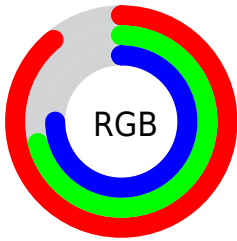
Format	Color
R _Y B	226, 182, 192
Decimal	14857920
CIE Lab	78.13, 17.41, 0.96
CIE LCh	78, 17.437, 3.169
Yxy	53.4304, 0.3425, 0.3177
Android (android.graphics.Color)	4293048000 (0xFFE2B6C0)
YUV	196.2960, -2.1179, 26.0504
Hunter-Lab	73.0961, 12.7561, 4.8147

Details

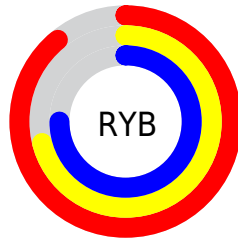
The Hex color **E2B6C0** is a light color, and the websafe version is hex **FFCCCC**. A complement of this color would be **B6E2D8**, and the grayscale version is **C4C4C4**.

A 20% lighter version of the original color is **FFEEF8**, and **AA818B** is the 20% darker color. If you saturate the color by 10%, you get **E29FAF**, and if you desaturate by 10%, it is **E2CDD1**.

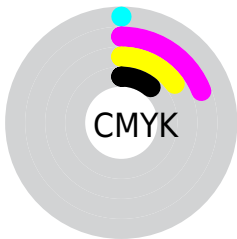
Distribution



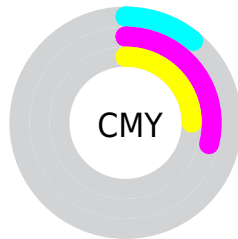
- Red (89%)
- Green (71%)
- Blue (75%)



- Red (89%)
- Yellow (71%)
- Blue (75%)



- Cyan (0%)
- Magenta (19%)
- Yellow (15%)
- Black (11%)



- Cyan (11%)
- Magenta (29%)
- Yellow (25%)

Brightness & Saturation Gradients

These gradients show how the Hex color E2B6C0 changes by changing the brightness by 10 percent. The first figure shows a shift by +10% for each color and the second figure -10%.

Similar to the brightness gradients but the following saturation gradients show a change of the Hex color E2B6C0 by changing the saturation by 10% instead.

 E2B6C0

 E2B6C0

FFFFFF

 C69BA5

 FFEEF8

 AA818B

 8F6871

 754F59

 5C3841

 44222B

 2D0D17

 150000

 000000

 E2B6C0

 E2B6C0

 E29FAF

 E2CDD1

 E2899D

 E2E3E3

 E2728C

 E2FAF4

 E25C7A

 E2FFFF

 E24569

 E22E57

 E21846

 E20134

 E20033

Harmonies

Analogous

The Analogous color harmony consists of three colors that are next to each other on the color wheel.



D8B8D0



E2B6C0



E3B7B0

Triad

The Triadic color harmony groups three colors that are evenly spaced from another and form a triangle on the color wheel.



E2B6C0



BAC6A6



9FC7DE

Complementary

The Complementary color scheme is a pair of colors which are on the opposite of each other on the color wheel.



E2B6C0



B6E2D8

Split Complementary

Split-complementary colors differ from the complementary color scheme. The scheme consists of three colors, the original color and two neighbors of the complement color.



97CAD2



E2B6C0



A8C9B2

Square

The Square scheme is like the rectangle color scheme, but the four colors are evenly spaced on the color wheel.



E2B6C0



CCC1A1



9BCBC2



B1C2E1

Rectangle

The Rectangle color scheme consists of four colors that form a rectangle on the color wheel.



E2B6C0



DEBAA8



9BCBC2



9BC8DB

Sweetspot

The Sweet Spot groups the original color and five complimentary colors.



E2B6C0



FFF0F3



D8B6E2



807779



000000



808080

Same Dimension

The Same Dimension uses a secret algorithm to generate beautiful new colors.



E2B6C0



FFC4D2



E2C2B6



706568



B00028



30000B

Inverse Universe

The Inverse Universe completely reimagines the original color for something new.



E2B6C0



FFC4D2



B6D6E2



706568



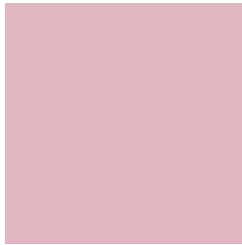
B00028



30000B

Previews

White Background



This preview shows how the Hex color E2B6C0 looks on a white background.

Color Contrast Check

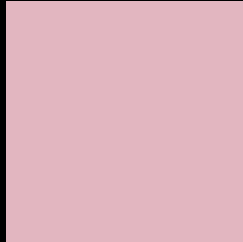
Large Text (above 18pt) WCAG AA × Fail

Any Text WCAG AA × Fail

Large Text (above 18pt) WCAG AAA × Fail

Any Text WCAG AAA × Fail

Black Background



This preview shows how the Hex color E2B6C0 looks on a black background.

Color Contrast Check

Large Text (above 18pt) WCAG AA ✓ Pass

Any Text WCAG AA ✓ Pass

Large Text (above 18pt) WCAG AAA ✓ Pass

Any Text WCAG AAA ✓ Pass

If you want to check with other color combinations, try the [Color Contrast Checker](#).

Hex E2B6C0 Background



This preview shows how black text looks on a background with the Hex color E2B6C0.

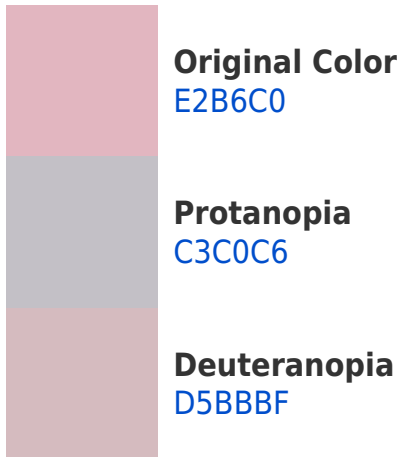


This preview shows how white text looks on a background with the Hex color E2B6C0.

Color Blindness Simulation

Color vision deficiency is a very complex topic, and I could not describe the different causes any better than Wikipedia does, so if you want to learn more, you should check out their [article about color blindness](#).

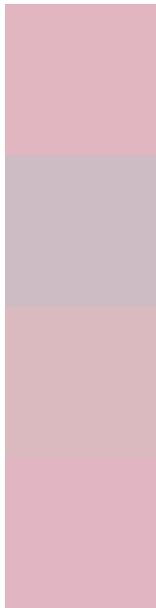
Dichromacy





Tritanopia
E2B5C4

Trichromacy



Original Color
E2B6C0

Protanomaly
CEBCC4

Deuteranomaly
DAB9BF

Tritanomaly
E2B5C3

Monochromacy



Original Color
E2B6C0

Achromatopsia
C4C4C4

Achromatomaly
CFBFC3

CSS Examples

Text

The CSS property to change the color of the text to Hex E2B6C0 is called "color". The color property can be set on classes, ids or directly on the HTML element.

This example shows how text in the color #E2B6C0 looks like.

```
.text, #text, p{  
    color:#E2B6C0  
}
```

If you want to add a text shadow in that color use the text-shadow property, you can generate a text shadow directly with our [CSS Text Shadow Generator](#).

Here you see how black text with a 4 pixel #E2B6C0 colored shadow looks like.

```
.shadow{ text-shadow: 4px 4px 2px #E2B6C0
}
```

Border

The CSS property to change the border of an element to Hex E2B6C0 is called "border". The border property can be set on classes, ids or directly on the HTML element.

This example shows the color as border, it can be applied via the CSS property "border" or "border-color".

```
.border, #border, table{ border:4px solid
#E2B6C0 }
```

If only the border color should be changed use the property `border-color`.

```
.border{ border-color:#E2B6C0 }
```

If you want to add a box shadow in that color use:

Here you see how a box with a 4 pixel #E2B6C0 colored shadow looks like.

```
.boxshadow{ -moz-box-shadow:4px 4px 4px  
4px #E2B6C0; -webkit-box-shadow:4px 4px  
4px 4px #E2B6C0; box-shadow:4px 4px 4px  
4px #E2B6C0 }
```

Background

The CSS property to change the background color of an element to Hex E2B6C0 is called "background". The background property can be set on classes, ids or directly on the HTML element.

```
.background, #background, body{  
background:#E2B6C0 }
```

If only the background color should be changed can be used:

```
.background{ background-color:#E2B6C0 }
```

This example shows the color as background, it is applied via the CSS property "background".

To optimize and compress your CSS code, you can use our [online CSS compressor and optimizer](#) based on csstidy. If you want to create a linear or radial gradient as background or border, check our [CSS Gradient Generator](#).

Hey! You found this booklet interesting? Support Converting Colors with the new Membership Option!

The pro membership hides all ads, plus gives you double the colors in the color bucket, and more awesome pro features!

[Learn more, Memberships starting at \\$2.50/m!](#)

**Follow me
on Twitter!**

@ConvertingColor