

Converting Colors

Hex(E2B794)

Have a look what the booklet for
Hex(E2B794) contains.

Hex(E2B794)	3
<i>Conversions</i>	4
<i>Details</i>	6
<i>Harmonies</i>	11
<i>Previews</i>	23
<i>Color Blindness Simulation</i>	26
<i>CSS Examples</i>	29

Color

Hex(E2B794)

Conversions

Conversions Part 1

Format	Color
Hex	E2B794
RGB	226, 183, 148
RGB Percent	89%, 72%, 58%
CMY	0.1137, 0.2824, 0.4196
CMYK	0.00, 0.19, 0.35, 0.11
HSL	27°, 57%, 73%
HSV	27°, 35%, 89%
XYZ	53.6428, 52.1738, 35.2603
YIQ	191.8670, 36.8630, -1.7690

Conversions

Conversions Part 2

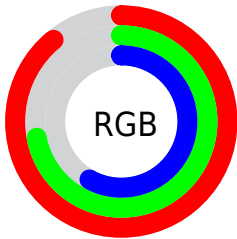
Format	Color
R _Y B	226, 211, 148
Decimal	14858132
CIE Lab	77.38, 10.68, 23.67
CIE LCh	77, 25.964, 65.710
Yxy	52.1738, 0.3802, 0.3698
Android (android.graphics.Color)	4293048212 (0xFFE2B794)
YUV	191.8670, -21.6264, 29.9346
Hunter-Lab	72.2315, 6.1583, 21.6192

Details

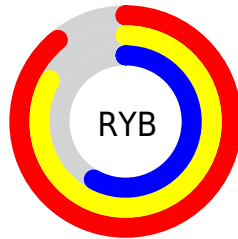
The Hex color **E2B794** is a light color, and the websafe version is hex **FFCC99**. A complement of this color would be **94BFE2**, and the grayscale version is **C0C0C0**.

A 20% lighter version of the original color is **FFEFCA**, and **A98261** is the 20% darker color. If you saturate the color by 10%, you get **E2AB7D**, and if you desaturate by 10%, it is **E2C3AB**.

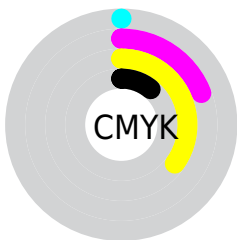
Distribution



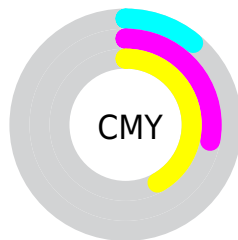
- Red (89%)
- Green (72%)
- Blue (58%)



- Red (89%)
- Yellow (83%)
- Blue (58%)



- Cyan (0%)
- Magenta (19%)
- Yellow (35%)
- Black (11%)



- Cyan (11%)
- Magenta (28%)
- Yellow (42%)

Brightness & Saturation Gradients

These gradients show how the Hex color E2B794 changes by changing the brightness by 10 percent. The first figure shows a shift by +10% for each color and the second figure -10%.

Similar to the brightness gradients but the following saturation gradients show a change of the Hex color E2B794 by changing the saturation by 10% instead.

 E2B794

 E2B794

FFFFFF

 C59C7A

 FFEFCA

 A98261

 FFFFEE

 8E6949

 735132

 593A1C

 412404

 281000

 000000

 E2B794

 E2B794

 E2AB7D

 E2C3AB

 E29E67

 E2D0C1

 E29250

 E2DCD8

 E2853A

 E2E9EE

 E27923

 E2F5FF

 E26C0C

 E2FFFF

 E26500

Harmonies

Analogous

The Analogous color harmony consists of three colors that are next to each other on the color wheel.



EFB0A4



E2B794



CCBF8F

Triad

The Triadic color harmony groups three colors that are evenly spaced from another and form a triangle on the color wheel.



E2B794



81CDC3



C9B7E6

Complementary

The Complementary color scheme is a pair of colors which are on the opposite of each other on the color wheel.



E2B794



94BFE2

Split Complementary

Split-complementary colors differ from the complementary color scheme. The scheme consists of three colors, the original color and two neighbors of the complement color.



A8C0EF



E2B794



7ACCD4

Square

The Square scheme is like the rectangle color scheme, but the four colors are evenly spaced on the color wheel.



E2B794



97CBAB



8AC7EA



E2B1D3

Rectangle

The Rectangle color scheme consists of four colors that form a rectangle on the color wheel.



E2B794



BBC493



8AC7EA



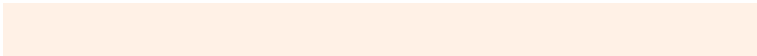
BFBAEA

Sweetspot

The Sweet Spot groups the original color and five complimentary colors.



E2B794



FFF1E6



E294C0



807770



000000



808080

Same Dimension

The Same Dimension uses a secret algorithm to generate beautiful new colors.



E2B794



FFC596



E2DD94



706A65



B04F00



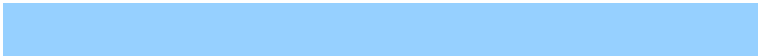
301600

Inverse Universe

The Inverse Universe completely reimagines the original color for something new.



94BFE2



96D0FF



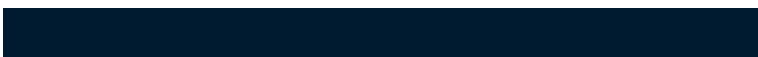
9499E2



656B70



0061B0



001B30

Previews

White Background



This preview shows how the Hex color E2B794 looks on a white background.

Color Contrast Check

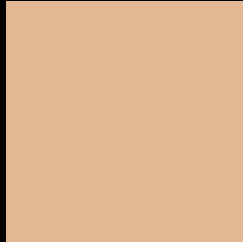
Large Text (above 18pt) WCAG AA × Fail

Any Text WCAG AA × Fail

Large Text (above 18pt) WCAG AAA × Fail

Any Text WCAG AAA × Fail

Black Background



This preview shows how the Hex color E2B794 looks on a black background.

Color Contrast Check

Large Text (above 18pt) WCAG AA ✓ Pass

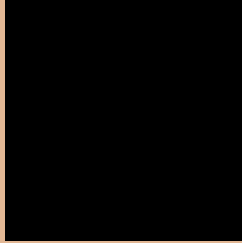
Any Text WCAG AA ✓ Pass

Large Text (above 18pt) WCAG AAA ✓ Pass

Any Text WCAG AAA ✓ Pass

If you want to check with other color combinations, try the [Color Contrast Checker](#).

Hex E2B794 Background



This preview shows how black text looks on a background with the Hex color E2B794.



This preview shows how white text looks on a background with the Hex color E2B794.

Color Blindness Simulation

Color vision deficiency is a very complex topic, and I could not describe the different causes any better than Wikipedia does, so if you want to learn more, you should check out their [article about color blindness](#).

Dichromacy





Tritanopia
E7B1BF

Trichromacy



Monochromacy



CSS Examples

Text

The CSS property to change the color of the text to Hex E2B794 is called "color". The color property can be set on classes, ids or directly on the HTML element.

This example shows how text in the color #E2B794 looks like.

```
.text, #text, p{  
    color:#E2B794  
}
```

If you want to add a text shadow in that color use the text-shadow property, you can generate a text shadow directly with our [CSS Text Shadow Generator](#).

Here you see how black text with a 4 pixel #E2B794 colored shadow looks like.

```
.shadow{ text-shadow: 4px 4px 2px #E2B794
}
```

Border

The CSS property to change the border of an element to Hex E2B794 is called "border". The border property can be set on classes, ids or directly on the HTML element.

This example shows the color as border, it can be applied via the CSS property "border" or "border-color".

```
.border, #border, table{ border:4px solid
#E2B794 }
```

If only the border color should be changed use the property `border-color`.

```
.border{ border-color:#E2B794 }
```

If you want to add a box shadow in that color use:

Here you see how a box with a 4 pixel #E2B794 colored shadow looks like.

```
.boxshadow{ -moz-box-shadow:4px 4px 4px  
4px #E2B794; -webkit-box-shadow:4px 4px  
4px 4px #E2B794; box-shadow:4px 4px 4px  
4px #E2B794 }
```

Background

The CSS property to change the background color of an element to Hex E2B794 is called "background". The background property can be set on classes, ids or directly on the HTML element.

```
.background, #background, body{  
background:#E2B794 }
```

If only the background color should be changed can be used:

```
.background{ background-color:#E2B794 }
```

This example shows the color as background, it is applied via the CSS property "background".

To optimize and compress your CSS code, you can use our [online CSS compressor and optimizer](#) based on csstidy. If you want to create a linear or radial gradient as background or border, check our [CSS Gradient Generator](#).

Hey! You found this booklet interesting? Support Converting Colors with the new Membership Option!

The pro membership hides all ads, plus gives you double the colors in the color bucket, and more awesome pro features!

[Learn more, Memberships starting at \\$2.50/m!](#)

**Follow me
on Twitter!**

@ConvertingColor