

# Converting Colors

Hex(E2BAA2)

Have a look what the booklet for  
Hex(E2BAA2) contains.

<b>Hex(E2BAA2)</b> .....	3
<b><i>Conversions</i></b> .....	4
<b><i>Details</i></b> .....	6
<b><i>Harmonies</i></b> .....	11
<b><i>Previews</i></b> .....	23
<b><i>Color Blindness Simulation</i></b> .....	26
<b><i>CSS Examples</i></b> .....	29

# **Color**

**Hex(E2BAA2)**

# Conversions

## Conversions Part 1

Format	Color
Hex	E2BAA2
RGB	226, 186, 162
RGB Percent	89%, 73%, 64%
CMY	0.1137, 0.2706, 0.3647
CMYK	0.00, 0.18, 0.28, 0.11
HSL	22°, 52%, 76%
HSV	22°, 28%, 89%
XYZ	55.4445, 53.8952, 41.6630
YIQ	195.2240, 31.5440, 1.0160

# Conversions

## Conversions Part 2

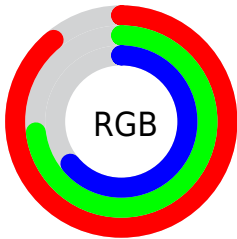
Format	Color
R <sub>Y</sub> B	226, 200, 162
Decimal	14858914
CIE Lab	78.40, 10.88, 17.56
CIE LCh	78, 20.657, 58.228
Yxy	53.8952, 0.3672, 0.3569
Android (android.graphics.Color)	4293048994 (0xFFE2BAA2)
YUV	195.2240, -16.3794, 26.9906
Hunter-Lab	73.4133, 6.3366, 17.7415

# Details

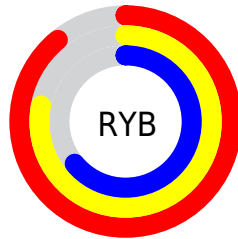
The Hex color **E2BAA2** is a light color, and the websafe version is hex **FFCCCC**. A complement of this color would be **A2CAE2**, and the grayscale version is **C3C3C3**.

A 20% lighter version of the original color is **FFF2D9**, and **AA856E** is the 20% darker color. If you saturate the color by 10%, you get **E2AC8B**, and if you desaturate by 10%, it is **E2C8B9**.

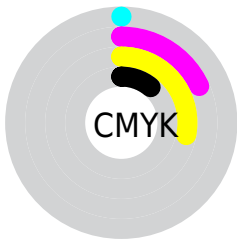
# Distribution



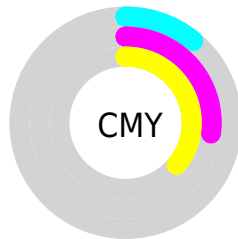
- Red (89%)
- Green (73%)
- Blue (64%)



- Red (89%)
- Yellow (78%)
- Blue (64%)



- Cyan (0%)
- Magenta (18%)
- Yellow (28%)
- Black (11%)



- Cyan (11%)
- Magenta (27%)
- Yellow (36%)

# Brightness & Saturation Gradients

These gradients show how the Hex color E2BAA2 changes by changing the brightness by 10 percent. The first figure shows a shift by +10% for each color and the second figure -10%.

Similar to the brightness gradients but the following saturation gradients show a change of the Hex color E2BAA2 by changing the saturation by 10% instead.



 E2BAA2

 E2BAA2

FFFFFF

 C69F88

 FFF2D9

 AA856E

 FFFFF5

 8F6C56

 74533F

 5B3C28

 422614

 2B1200

 0A0000

 000000

 E2BAA2

 E2BAA2

 E2AC8B

 E2C8B9

 E29E75

 E2D6CF

 E2905E

 E2E4E6

 E28248

 E2F3FC

 E27331

 E2FFFF

 E2651A

 E25704

 E25500

# Harmonies

## Analogous

The Analogous color harmony consists of three colors that are next to each other on the color wheel.



EAB6B1



E2BAA2



D2C09C

# Triad

The Triadic color harmony groups three colors that are evenly spaced from another and form a triangle on the color wheel.



E2BAA2



95CDC0



C4BDE4

# Complementary

The Complementary color scheme is a pair of colors which are on the opposite of each other on the color wheel.



E2BAA2



A2CAE2

# Split Complementary

Split-complementary colors differ from the complementary color scheme. The scheme consists of three colors, the original color and two neighbors of the complement color.



ABC4E8



E2BAA2



8ECDD3

# Square

The Square scheme is like the rectangle color scheme, but the four colors are evenly spaced on the color wheel.



E2BAA2



A7CBAD



96C9E2



DAB8D6

# Rectangle

The Rectangle color scheme consists of four colors that form a rectangle on the color wheel.



E2BAA2



C4C49D



96C9E2



BCC0E6



# Sweetspot

The Sweet Spot groups the original color and five complimentary colors.



E2BAA2



FFF2EB



E2A2CB



807873



000000



808080



# Same Dimension

The Same Dimension uses a secret algorithm to generate beautiful new colors.



E2BAA2



FFC9A8



E2D9A2



706965



B04200



301200

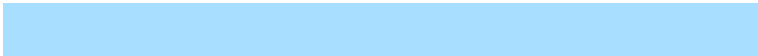


# Inverse Universe

The Inverse Universe completely reimagines the original color for something new.



A2CAE2



A8DEFF



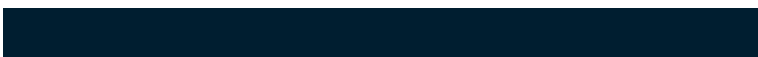
A2ABE2



656C70



006EB0



001E30



# Previews

## White Background



This preview shows how the Hex color E2BAA2 looks on a white background.

## Color Contrast Check

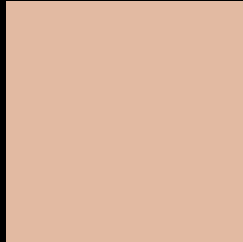
Large Text (above 18pt) WCAG AA × Fail

Any Text WCAG AA × Fail

Large Text (above 18pt) WCAG AAA × Fail

Any Text WCAG AAA × Fail

# Black Background



This preview shows how the Hex color E2BAA2 looks on a black background.

## Color Contrast Check

Large Text (above 18pt) WCAG AA ✓ Pass

Any Text WCAG AA ✓ Pass

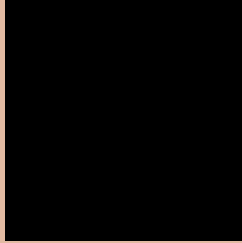
Large Text (above 18pt) WCAG AAA ✓ Pass

Any Text WCAG AAA ✓ Pass

If you want to check with other color combinations, try the [Color Contrast Checker](#).



## Hex E2BAA2 Background



This preview shows how black text looks on a background with the Hex color E2BAA2.



This preview shows how white text looks on a background with the Hex color E2BAA2.

# Color Blindness Simulation

Color vision deficiency is a very complex topic, and I could not describe the different causes any better than Wikipedia does, so if you want to learn more, you should check out their [article about color blindness](#).

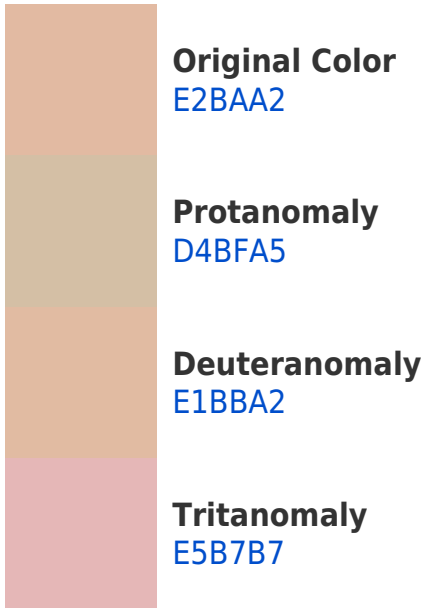
## Dichromacy



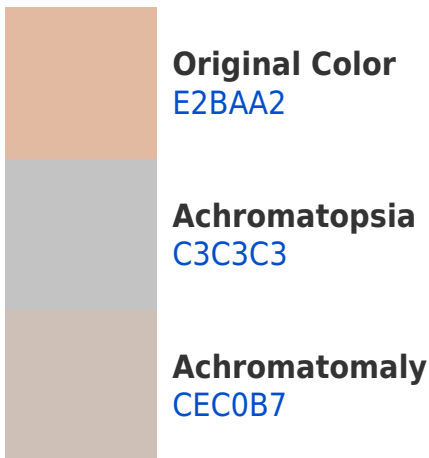


**Tritanopia**  
E6B5C3

# Trichromacy



# Monochromacy



# CSS Examples

## Text

The CSS property to change the color of the text to Hex E2BAA2 is called "color". The color property can be set on classes, ids or directly on the HTML element.

This example shows how text in the color #E2BAA2 looks like.

```
.text, #text, p{  
    color:#E2BAA2  
}
```

If you want to add a text shadow in that color use the text-shadow property, you can generate a text shadow directly with our [CSS Text Shadow Generator](#).

Here you see how black text with a 4 pixel #E2BAA2 colored shadow looks like.

```
.shadow{ text-shadow: 4px 4px 2px #E2BAA2
}
```

## Border

The CSS property to change the border of an element to Hex E2BAA2 is called "border". The border property can be set on classes, ids or directly on the HTML element.

This example shows the color as border, it can be applied via the CSS property "border" or "border-color".

```
.border, #border, table{ border:4px solid
#E2BAA2 }
```

If only the border color should be changed use the property `border-color`.

```
.border{ border-color:#E2BAA2 }
```

If you want to add a box shadow in that color use:

Here you see how a box with a 4 pixel #E2BAA2 colored shadow looks like.

```
.boxshadow{ -moz-box-shadow:4px 4px 4px  
4px #E2BAA2; -webkit-box-shadow:4px 4px  
4px 4px #E2BAA2; box-shadow:4px 4px 4px  
4px #E2BAA2 }
```

# Background

The CSS property to change the background color of an element to Hex E2BAA2 is called "background". The background property can be set on classes, ids or directly on the HTML element.

```
.background, #background, body{  
background:#E2BAA2 }
```

If only the background color should be changed can be used:

```
.background{ background-color:#E2BAA2 }
```

This example shows the color as background, it is applied via the CSS property "background".

To optimize and compress your CSS code, you can use our [online CSS compressor and optimizer](#) based on csstidy. If you want to create a linear or radial gradient as background or border, check our [CSS Gradient Generator](#).



Hey! You found this booklet interesting? Support Converting Colors with the new Membership Option!

The pro membership hides all ads, plus gives you double the colors in the color bucket, and more awesome pro features!

**[Learn more, Memberships starting at \\$2.50/m!](#)**

**Follow me  
on Twitter!**

@ConvertingColor