

Converting Colors

Hex(E2BAAF)

Have a look what the booklet for
Hex(E2BAAF) contains.

Hex(E2BAAF)	3
<i>Conversions</i>	4
<i>Details</i>	6
<i>Harmonies</i>	11
<i>Previews</i>	23
<i>Color Blindness Simulation</i>	26
<i>CSS Examples</i>	29

Color

Hex(E2BAAF)

Conversions

Conversions Part 1

Format	Color
Hex	E2BAAF
RGB	226, 186, 175
RGB Percent	89%, 73%, 69%
CMY	0.1137, 0.2706, 0.3137
CMYK	0.00, 0.18, 0.23, 0.11
HSL	13°, 47%, 79%
HSV	13°, 23%, 89%
XYZ	56.6608, 54.3817, 48.0678
YIQ	196.7060, 27.3710, 5.0590

Conversions

Conversions Part 2

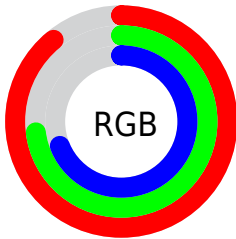
Format	Color
R _Y B	226, 189, 175
Decimal	14858927
CIE Lab	78.68, 12.69, 10.96
CIE LCh	79, 16.768, 40.822
Yxy	54.3817, 0.3561, 0.3418
Android (android.graphics.Color)	4293049007 (0xFFE2BAAF)
YUV	196.7060, -10.7011, 25.6908
Hunter-Lab	73.7440, 8.0977, 12.9743

Details

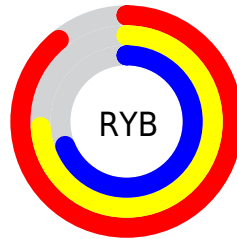
The Hex color **E2BAAF** is a light color, and the websafe version is hex **FFCCCC**. A complement of this color would be **AFD7E2**, and the grayscale version is **C5C5C5**.

A 20% lighter version of the original color is **FFF2E7**, and **AA857B** is the 20% darker color. If you saturate the color by 10%, you get **E2A898**, and if you desaturate by 10%, it is **E2CCC6**.

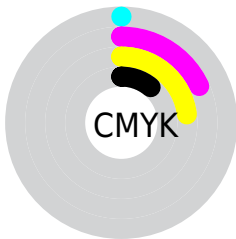
Distribution



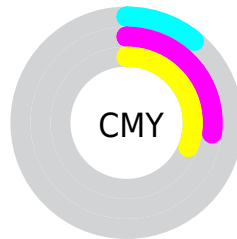
- Red (89%)
- Green (73%)
- Blue (69%)



- Red (89%)
- Yellow (74%)
- Blue (69%)



- Cyan (0%)
- Magenta (18%)
- Yellow (23%)
- Black (11%)



- Cyan (11%)
- Magenta (27%)
- Yellow (31%)

Brightness & Saturation Gradients

These gradients show how the Hex color E2BAAF changes by changing the brightness by 10 percent. The first figure shows a shift by +10% for each color and the second figure -10%.

Similar to the brightness gradients but the following saturation gradients show a change of the Hex color E2BAAF by changing the saturation by 10% instead.

 E2BAAF

FFFFFF

 FFF2E7

 E2BAAF

 C69F94

 AA857B

 8F6C62

 75534A

 5B3C33

 43261E

 2C1106

 110000

 000000

 E2BAAF

 E2BAAF

 E2A898

 E2CCCC

 E29782

 E2DDDC

 E2856B

 E2EFF3

 E27355

 E2FFFF

 E2613E

 E25027

 E23E11

 E23100

Harmonies

Analogous

The Analogous color harmony consists of three colors that are next to each other on the color wheel.



E3B8BD



E2BAAF



D9BEA6

Triad

The Triadic color harmony groups three colors that are evenly spaced from another and form a triangle on the color wheel.



E2BAAF



A7CBB8



B9C2E1

Complementary

The Complementary color scheme is a pair of colors which are on the opposite of each other on the color wheel.



E2BAAF



AFD7E2

Split Complementary

Split-complementary colors differ from the complementary color scheme. The scheme consists of three colors, the original color and two neighbors of the complement color.



A6C7E0



E2BAAF



9CCCC8

Square

The Square scheme is like the rectangle color scheme, but the four colors are evenly spaced on the color wheel.



E2BAAF



B7C8AB



9BCBD6



CDBDDA

Rectangle

The Rectangle color scheme consists of four colors that form a rectangle on the color wheel.



E2BAAF



CFC2A4



9BCBD6



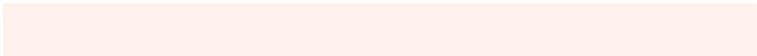
B2C4E2

Sweetspot

The Sweet Spot groups the original color and five complimentary colors.



E2BAAF



FFF1ED



E2AFD8



807875



000000



808080

Same Dimension

The Same Dimension uses a secret algorithm to generate beautiful new colors.



E2BAAF



FFC9BA



E2D3AF



706765



B02600



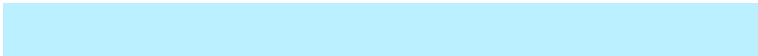
300A00

Inverse Universe

The Inverse Universe completely reimagines the original color for something new.



AFD7E2



BAF0FF



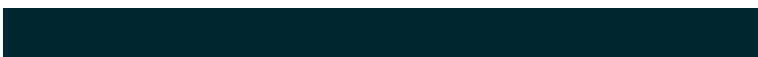
AFBEE2



656E70



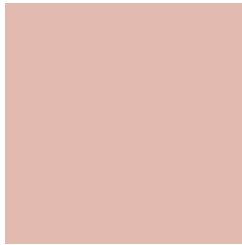
008AB0



002630

Previews

White Background



This preview shows how the Hex color E2BAAF looks on a white background.

Color Contrast Check

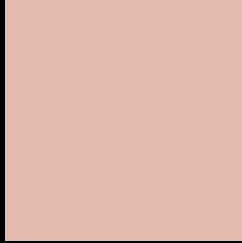
Large Text (above 18pt) WCAG AA × Fail

Any Text WCAG AA × Fail

Large Text (above 18pt) WCAG AAA × Fail

Any Text WCAG AAA × Fail

Black Background



This preview shows how the Hex color E2BAAF looks on a black background.

Color Contrast Check

Large Text (above 18pt) WCAG AA ✓ Pass

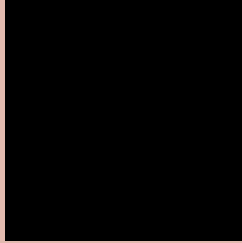
Any Text WCAG AA ✓ Pass

Large Text (above 18pt) WCAG AAA ✓ Pass

Any Text WCAG AAA ✓ Pass

If you want to check with other color combinations, try the [Color Contrast Checker](#).

Hex E2BAAF Background



This preview shows how black text looks on a background with the Hex color E2BAAF.

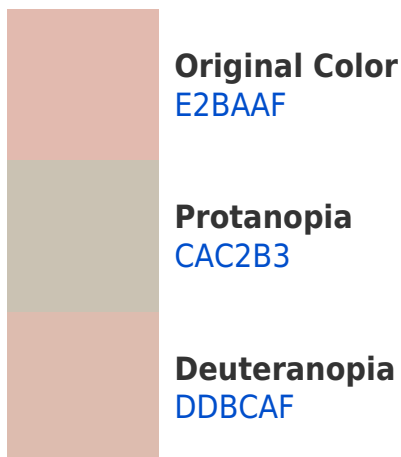


This preview shows how white text looks on a background with the Hex color E2BAAF.

Color Blindness Simulation

Color vision deficiency is a very complex topic, and I could not describe the different causes any better than Wikipedia does, so if you want to learn more, you should check out their [article about color blindness](#).

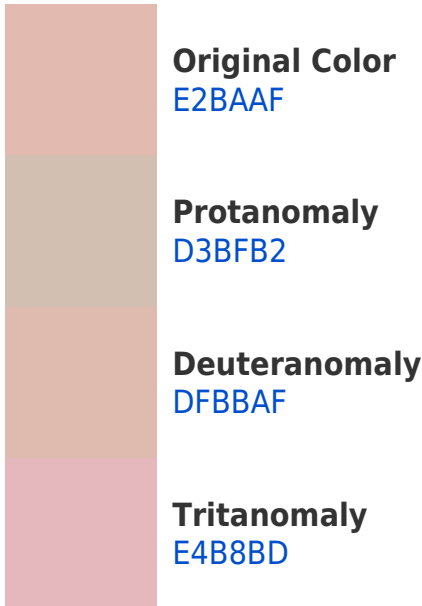
Dichromacy



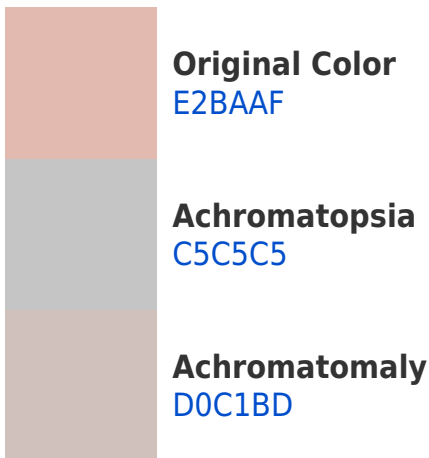


Tritanopia
E5B7C5

Trichromacy



Monochromacy



CSS Examples

Text

The CSS property to change the color of the text to Hex E2BAAF is called "color". The color property can be set on classes, ids or directly on the HTML element.

This example shows how text in the color #E2BAAF looks like.

```
.text, #text, p{  
    color:#E2BAAF  
}
```

If you want to add a text shadow in that color use the text-shadow property, you can generate a text shadow directly with our [CSS Text Shadow Generator](#).

Here you see how black text with a 4 pixel #E2BAAF colored shadow looks like.

```
.shadow{ text-shadow: 4px 4px 2px #E2BAAF
}
```

Border

The CSS property to change the border of an element to Hex E2BAAF is called "border". The border property can be set on classes, ids or directly on the HTML element.

This example shows the color as border, it can be applied via the CSS property "border" or "border-color".

```
.border, #border, table{ border:4px solid
#E2BAAF }
```

If only the border color should be changed use the property `border-color`.

```
.border{ border-color:#E2BAAF }
```

If you want to add a box shadow in that color use:

Here you see how a box with a 4 pixel #E2BAAF colored shadow looks like.

```
.boxshadow{ -moz-box-shadow:4px 4px 4px  
4px #E2BAAF; -webkit-box-shadow:4px 4px  
4px 4px #E2BAAF; box-shadow:4px 4px 4px  
4px #E2BAAF }
```

Background

The CSS property to change the background color of an element to Hex E2BAAF is called "background". The background property can be set on classes, ids or directly on the HTML element.

```
.background, #background, body{  
background:#E2BAAF }
```

If only the background color should be changed can be used:

```
.background{ background-color:#E2BAAF }
```

This example shows the color as background, it is applied via the CSS property "background".

To optimize and compress your CSS code, you can use our [online CSS compressor and optimizer](#) based on csstidy. If you want to create a linear or radial gradient as background or border, check our [CSS Gradient Generator](#).

Hey! You found this booklet interesting? Support Converting Colors with the new Membership Option!

The pro membership hides all ads, plus gives you double the colors in the color bucket, and more awesome pro features!

[Learn more, Memberships starting at \\$2.50/m!](#)

**Follow me
on Twitter!**

@ConvertingColor