

Converting Colors

Hex(E2BAB4)

Have a look what the booklet for
Hex(E2BAB4) contains.

Hex(E2BAB4)	3
<i>Conversions</i>	4
<i>Details</i>	6
<i>Harmonies</i>	11
<i>Previews</i>	23
<i>Color Blindness Simulation</i>	26
<i>CSS Examples</i>	29

Color

Hex(E2BAB4)

Conversions

Conversions Part 1

Format	Color
Hex	E2BAB4
RGB	226, 186, 180
RGB Percent	89%, 73%, 71%
CMY	0.1137, 0.2706, 0.2941
CMYK	0.00, 0.18, 0.20, 0.11
HSL	8°, 44%, 80%
HSV	8°, 20%, 89%
XYZ	57.1612, 54.5818, 50.7026
YIQ	197.2760, 25.7660, 6.6140

Conversions

Conversions Part 2

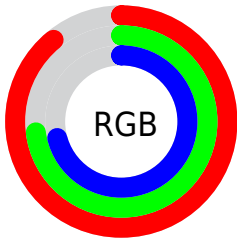
Format	Color
R _Y B	226, 187, 180
Decimal	14858932
CIE Lab	78.80, 13.42, 8.43
CIE LCh	79, 15.851, 32.123
Yxy	54.5818, 0.3519, 0.3360
Android (android.graphics.Color)	4293049012 (0xFFE2BAB4)
YUV	197.2760, -8.5171, 25.1909
Hunter-Lab	73.8795, 8.8176, 11.0256

Details

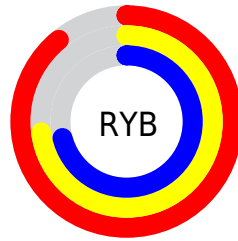
The Hex color **E2BAB4** is a light color, and the websafe version is hex **FFCCCC**. A complement of this color would be **B4DCE2**, and the grayscale version is **C5C5C5**.

A 20% lighter version of the original color is **FFF2EC**, and **AA857F** is the 20% darker color. If you saturate the color by 10%, you get **E2A69D**, and if you desaturate by 10%, it is **E2CECB**.

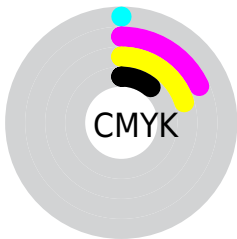
Distribution



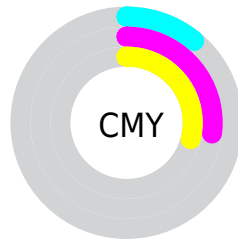
- Red (89%)
- Green (73%)
- Blue (71%)



- Red (89%)
- Yellow (73%)
- Blue (71%)



- Cyan (0%)
- Magenta (18%)
- Yellow (20%)
- Black (11%)



- Cyan (11%)
- Magenta (27%)
- Yellow (29%)

Brightness & Saturation Gradients

These gradients show how the Hex color E2BAB4 changes by changing the brightness by 10 percent. The first figure shows a shift by +10% for each color and the second figure -10%.

Similar to the brightness gradients but the following saturation gradients show a change of the Hex color E2BAB4 by changing the saturation by 10% instead.

 E2BAB4

FFFFFF

 FFF2EC

 E2BAB4

 C69F99

 AA857F

 8F6B66

 75534E

 5C3C37

 432622

 2C110C

 130000

 000000

 E2BAB4

 E2BAB4

 E2A69D

 E2CECB

 E29387

 E2E1E1

 E27F70

 E2F5F8

 E26B5A

 E2FFFF

 E25843

 E2442C

 E23016

 E21D00

Harmonies

Analogous

The Analogous color harmony consists of three colors that are next to each other on the color wheel.



E1B9C2



E2BAB4



DBBEA9

Triad

The Triadic color harmony groups three colors that are evenly spaced from another and form a triangle on the color wheel.



E2BAB4



ADCAB5



B4C4E0

Complementary

The Complementary color scheme is a pair of colors which are on the opposite of each other on the color wheel.



E2BAB4



B4DCE2

Split Complementary

Split-complementary colors differ from the complementary color scheme. The scheme consists of three colors, the original color and two neighbors of the complement color.



A4C8DD



E2BAB4



A1CCC4

Square

The Square scheme is like the rectangle color scheme, but the four colors are evenly spaced on the color wheel.



E2BAB4



BDC7AA



9DCBD2



C7BFDC

Rectangle

The Rectangle color scheme consists of four colors that form a rectangle on the color wheel.



E2BAB4



D3C1A6



9DCBD2



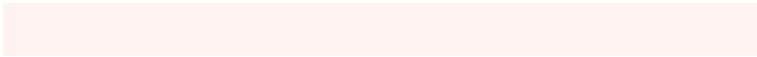
AEC6E0

Sweetspot

The Sweet Spot groups the original color and five complimentary colors.



E2BAB4



FFF2F0



E2B4DD



807877



000000



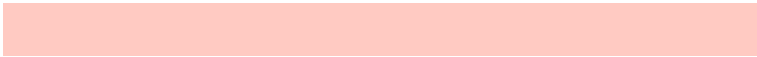
808080

Same Dimension

The Same Dimension uses a secret algorithm to generate beautiful new colors.



E2BAB4



FFCAC2



E2D0B4



706665



B01700



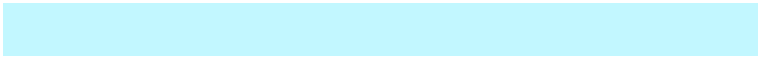
300600

Inverse Universe

The Inverse Universe completely reimagines the original color for something new.



B4DCE2



C2F7FF



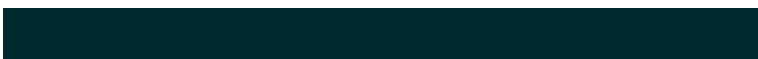
B4C6E2



656F70



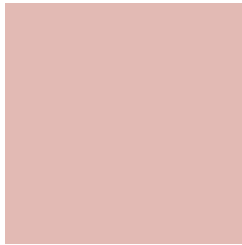
0099B0



002A30

Previews

White Background



This preview shows how the Hex color E2BAB4 looks on a white background.

Color Contrast Check

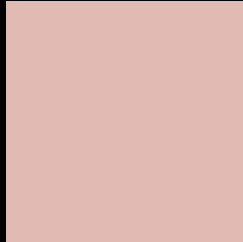
Large Text (above 18pt) WCAG AA × Fail

Any Text WCAG AA × Fail

Large Text (above 18pt) WCAG AAA × Fail

Any Text WCAG AAA × Fail

Black Background



This preview shows how the Hex color E2BAB4 looks on a black background.

Color Contrast Check

Large Text (above 18pt) WCAG AA ✓ Pass

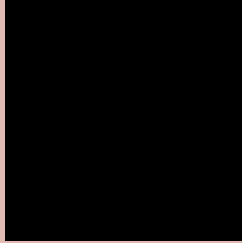
Any Text WCAG AA ✓ Pass

Large Text (above 18pt) WCAG AAA ✓ Pass

Any Text WCAG AAA ✓ Pass

If you want to check with other color combinations, try the [Color Contrast Checker](#).

Hex E2BAB4 Background



This preview shows how black text looks on a background with the Hex color E2BAB4.

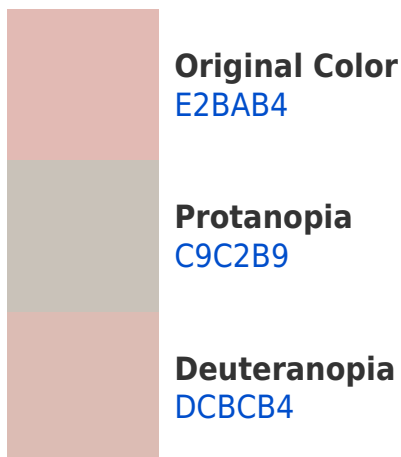


This preview shows how white text looks on a background with the Hex color E2BAB4.

Color Blindness Simulation

Color vision deficiency is a very complex topic, and I could not describe the different causes any better than Wikipedia does, so if you want to learn more, you should check out their [article about color blindness](#).

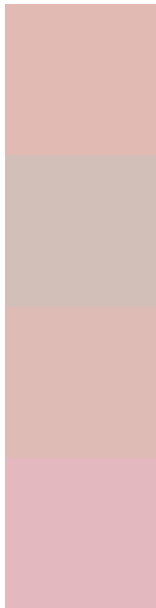
Dichromacy





Tritanopia
E4B7C6

Trichromacy



Original Color
E2BAB4

Protanomaly
D2BFB7

Deuteranomaly
DEBBB4

Tritanomaly
E3B8BF

Monochromacy



Original Color
E2BAB4

Achromatopsia
C5C5C5

Achromatomaly
D0C1BF

CSS Examples

Text

The CSS property to change the color of the text to Hex E2BAB4 is called "color". The color property can be set on classes, ids or directly on the HTML element.

This example shows how text in the color #E2BAB4 looks like.

```
.text, #text, p{  
    color:#E2BAB4  
}
```

If you want to add a text shadow in that color use the text-shadow property, you can generate a text shadow directly with our [CSS Text Shadow Generator](#).

Here you see how black text with a 4 pixel #E2BAB4 colored shadow looks like.

```
.shadow{ text-shadow: 4px 4px 2px #E2BAB4  
}
```

Border

The CSS property to change the border of an element to Hex E2BAB4 is called "border". The border property can be set on classes, ids or directly on the HTML element.

This example shows the color as border, it can be applied via the CSS property "border" or "border-color".

```
.border, #border, table{ border:4px solid  
#E2BAB4 }
```

If only the border color should be changed use the property `border-color`.

```
.border{ border-color:#E2BAB4 }
```

If you want to add a box shadow in that color use:

Here you see how a box with a 4 pixel #E2BAB4 colored shadow looks like.

```
.boxshadow{ -moz-box-shadow:4px 4px 4px  
4px #E2BAB4; -webkit-box-shadow:4px 4px  
4px 4px #E2BAB4; box-shadow:4px 4px 4px  
4px #E2BAB4 }
```

Background

The CSS property to change the background color of an element to Hex E2BAB4 is called "background". The background property can be set on classes, ids or directly on the HTML element.

```
.background, #background, body{  
background:#E2BAB4 }
```

If only the background color should be changed can be used:

```
.background{ background-color:#E2BAB4 }
```

This example shows the color as background, it is applied via the CSS property "background".

To optimize and compress your CSS code, you can use our [online CSS compressor and optimizer](#) based on csstidy. If you want to create a linear or radial gradient as background or border, check our [CSS Gradient Generator](#).

Hey! You found this booklet interesting? Support Converting Colors with the new Membership Option!

The pro membership hides all ads, plus gives you double the colors in the color bucket, and more awesome pro features!

[Learn more, Memberships starting at \\$2.50/m!](#)

**Follow me
on Twitter!**

@ConvertingColor