

Converting Colors

Hex(E2BBBB)

Have a look what the booklet for
Hex(E2BBBB) contains.

Hex(E2BBBB)	3
<i>Conversions</i>	4
<i>Details</i>	6
<i>Harmonies</i>	11
<i>Previews</i>	23
<i>Color Blindness Simulation</i>	26
<i>CSS Examples</i>	29

Color

Hex(E2BBBB)

Conversions

Conversions Part 1

Format	Color
Hex	E2BBBB
RGB	226, 187, 187
RGB Percent	89%, 73%, 73%
CMY	0.1137, 0.2667, 0.2667
CMYK	0.00, 0.17, 0.17, 0.11
HSL	0°, 40%, 81%
HSV	0°, 17%, 89%
XYZ	58.1040, 55.2973, 54.6247
YIQ	198.6610, 23.2440, 8.2680

Conversions

Conversions Part 2

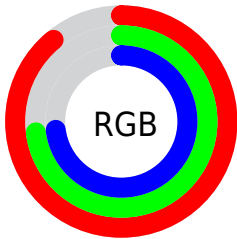
Format	Color
R _Y B	226, 187, 187
Decimal	14859195
CIE Lab	79.21, 13.95, 5.24
CIE LCh	79, 14.906, 20.585
Yxy	55.2973, 0.3458, 0.3291
Android (android.graphics.Color)	4293049275 (0xFFE2BBBB)
YUV	198.6610, -5.7489, 23.9763
Hunter-Lab	74.3621, 9.3400, 8.5004

Details

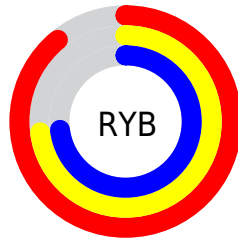
The Hex color **E2BBBB** is a light color, and the websafe version is hex **FFCCCC**. A complement of this color would be **BBE2E2**, and the grayscale version is **C7C7C7**.

A 20% lighter version of the original color is **FFF3F3**, and **AA8686** is the 20% darker color. If you saturate the color by 10%, you get **E2A4A4**, and if you desaturate by 10%, it is **E2D2D2**.

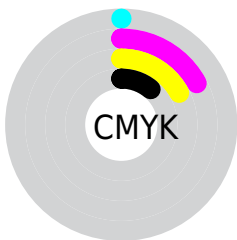
Distribution



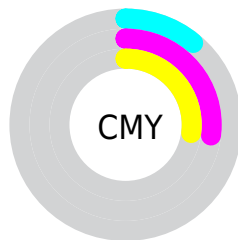
- Red (89%)
- Green (73%)
- Blue (73%)



- Red (89%)
- Yellow (73%)
- Blue (73%)



- Cyan (0%)
- Magenta (17%)
- Yellow (17%)
- Black (11%)



- Cyan (11%)
- Magenta (27%)
- Yellow (27%)

Brightness & Saturation Gradients

These gradients show how the Hex color E2BBBB changes by changing the brightness by 10 percent. The first figure shows a shift by +10% for each color and the second figure -10%.

Similar to the brightness gradients but the following saturation gradients show a change of the Hex color E2BBBB by changing the saturation by 10% instead.

 E2BBBB

 E2BBBB

FFFFFF

 C6A0A0

 FFF3F3

 AA8686

 8F6C6D

 755454

 5C3D3D

 442728

 2D1213

 170000

 000000

 E2BBBB

 E2BBBB

 E2A4A4

 E2D2D2

 E28E8E

 E2E8E8

 E27777

 E2FFFF

 E26161

 E24A4A

 E23333

 E21D1D

 E20606

 E20000

Harmonies

Analogous

The Analogous color harmony consists of three colors that are next to each other on the color wheel.



DEBBC9



E2BBBB



DEBEAF

Triad

The Triadic color harmony groups three colors that are evenly spaced from another and form a triangle on the color wheel.



E2BBBB



B5CAB2



B0C7DF

Complementary

The Complementary color scheme is a pair of colors which are on the opposite of each other on the color wheel.



E2BBBB



BBE2E2

Split Complementary

Split-complementary colors differ from the complementary color scheme. The scheme consists of three colors, the original color and two neighbors of the complement color.



A4CAD9



E2BBBB



A8CCBF

Square

The Square scheme is like the rectangle color scheme, but the four colors are evenly spaced on the color wheel.



E2BBBB



C5C6AA



A1CCCD



C1C2DE

Rectangle

The Rectangle color scheme consists of four colors that form a rectangle on the color wheel.



E2BBBB



D8C0AA



A1CCCD



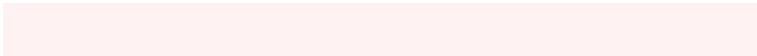
ABC8DE

Sweetspot

The Sweet Spot groups the original color and five complimentary colors.



E2BBBB



FFF2F2



E2BBE2



807878



000000



808080

Same Dimension

The Same Dimension uses a secret algorithm to generate beautiful new colors.



E2BBBB



FFC9C9



E2CFBB



706565



B00000



300000

Inverse Universe

The Inverse Universe completely reimagines the original color for something new.



BBE2E2



C9FFFF



BBCFE2



657070



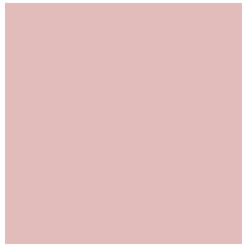
00B0B0



003030

Previews

White Background



This preview shows how the Hex color E2BBBB looks on a white background.

Color Contrast Check

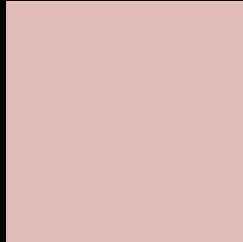
Large Text (above 18pt) WCAG AA × Fail

Any Text WCAG AA × Fail

Large Text (above 18pt) WCAG AAA × Fail

Any Text WCAG AAA × Fail

Black Background



This preview shows how the Hex color E2BBBB looks on a black background.

Color Contrast Check

Large Text (above 18pt) WCAG AA ✓ Pass

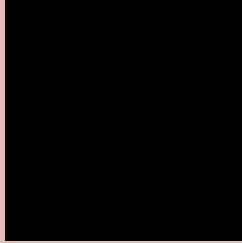
Any Text WCAG AA ✓ Pass

Large Text (above 18pt) WCAG AAA ✓ Pass

Any Text WCAG AAA ✓ Pass

If you want to check with other color combinations, try the [Color Contrast Checker](#).

Hex E2BBBB Background



This preview shows how black text looks on a background with the Hex color E2BBBB.



This preview shows how white text looks on a background with the Hex color E2BBBB.

Color Blindness Simulation

Color vision deficiency is a very complex topic, and I could not describe the different causes any better than Wikipedia does, so if you want to learn more, you should check out their [article about color blindness](#).

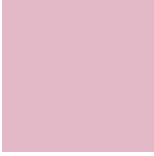
Dichromacy



Original Color
E2BBBB

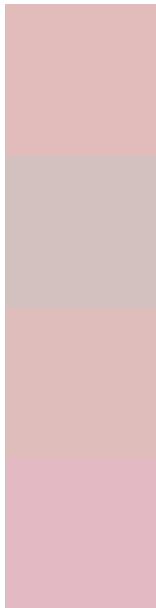
Protanopia
C9C4C0

Deuteranopia
DBBEBA



Tritanopia
E4B9C7

Trichromacy



Original Color
E2BBBB

Protanomaly
D2C1BE

Deuteranomaly
DEBDBA

Tritanomaly
E3BAC3

Monochromacy



Original Color
E2BBBB

Achromatopsia
C7C7C7

Achromatomaly
D1C3C3

CSS Examples

Text

The CSS property to change the color of the text to Hex E2BBBB is called "color". The color property can be set on classes, ids or directly on the HTML element.

This example shows how text in the color #E2BBBB looks like.

```
.text, #text, p{  
  color:#E2BBBB  
}
```

If you want to add a text shadow in that color use the text-shadow property, you can generate a text shadow directly with our [CSS Text Shadow Generator](#).

Here you see how black text with a 4 pixel #E2BBBB colored shadow looks like.

```
.shadow{ text-shadow: 4px 4px 2px #E2BBBB }  
}
```

Border

The CSS property to change the border of an element to Hex E2BBBB is called "border". The border property can be set on classes, ids or directly on the HTML element.

This example shows the color as border, it can be applied via the CSS property "border" or "border-color".

```
.border, #border, table{ border:4px solid #E2BBBB }  
}
```

If only the border color should be changed use the property `border-color`.

```
.border{ border-color:#E2BBBB }
```

If you want to add a box shadow in that color use:

Here you see how a box with a 4 pixel #E2BBBB colored shadow looks like.

```
.boxshadow{ -moz-box-shadow:4px 4px 4px  
4px #E2BBBB; -webkit-box-shadow:4px 4px  
4px 4px #E2BBBB; box-shadow:4px 4px 4px  
4px #E2BBBB }
```

Background

The CSS property to change the background color of an element to Hex E2BBBB is called "background". The background property can be set on classes, ids or directly on the HTML element.

```
.background, #background, body{  
background:#E2BBBB }
```

If only the background color should be changed can be used:

```
.background{ background-color:#E2BBBB }
```

This example shows the color as background, it is applied via the CSS property "background".

To optimize and compress your CSS code, you can use our [online CSS compressor and optimizer](#) based on csstidy. If you want to create a linear or radial gradient as background or border, check our [CSS Gradient Generator](#).

Hey! You found this booklet interesting? Support Converting Colors with the new Membership Option!

The pro membership hides all ads, plus gives you double the colors in the color bucket, and more awesome pro features!

[Learn more, Memberships starting at \\$2.50/m!](#)

**Follow me
on Twitter!**

@ConvertingColor