

Converting Colors

Hex(E2BDB2)

Have a look what the booklet for
Hex(E2BDB2) contains.

Hex(E2BDB2)	3
<i>Conversions</i>	4
<i>Details</i>	6
<i>Harmonies</i>	11
<i>Previews</i>	23
<i>Color Blindness Simulation</i>	26
<i>CSS Examples</i>	29

Color

Hex(E2BDB2)

Conversions

Conversions Part 1

Format	Color
Hex	E2BDB2
RGB	226, 189, 178
RGB Percent	89%, 74%, 70%
CMY	0.1137, 0.2588, 0.3020
CMYK	0.00, 0.16, 0.21, 0.11
HSL	14°, 45%, 79%
HSV	14°, 21%, 89%
XYZ	57.5975, 55.7783, 49.8501
YIQ	198.8090, 25.5830, 4.4230

Conversions

Conversions Part 2

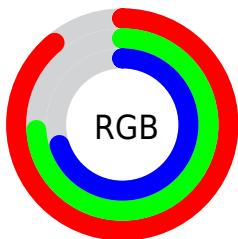
Format	Color
R _Y B	226, 192, 178
Decimal	14859698
CIE Lab	79.49, 11.53, 10.49
CIE LCh	79, 15.587, 42.287
Yxy	55.7783, 0.3529, 0.3417
Android (android.graphics.Color)	4293049778 (0xFFE2BDB2)
YUV	198.8090, -10.2588, 23.8465
Hunter-Lab	74.6849, 6.9620, 12.7050

Details

The Hex color **E2BDB2** is a light color, and the websafe version is hex **FFCCCC**. A complement of this color would be **B2D7E2**, and the grayscale version is **C7C7C7**.

A 20% lighter version of the original color is **FFF5EA**, and **AA887D** is the 20% darker color. If you saturate the color by 10%, you get **E2AC9B**, and if you desaturate by 10%, it is **E2CEC9**.

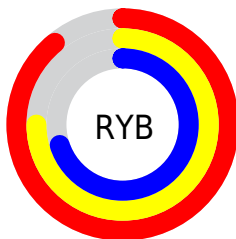
Distribution



Red (89%)

Green (74%)

Blue (70%)



Red (89%)

Yellow (75%)

Blue (70%)

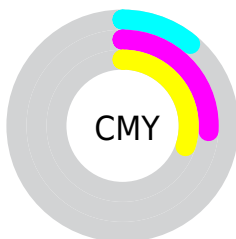


Cyan (0%)

Magenta (16%)

Yellow (21%)

Black (11%)



Cyan (11%)

Magenta (26%)

Yellow (30%)

Brightness & Saturation Gradients

These gradients show how the Hex color E2BDB2 changes by changing the brightness by 10 percent. The first figure shows a shift by +10% for each color and the second figure -10%.

Similar to the brightness gradients but the following saturation gradients show a change of the Hex color E2BDB2 by changing the saturation by 10% instead.

 E2BDB2

FFFFFF

 FFF5EA

 E2BDB2

 C6A297

 AA887D

 8F6E64

 75564D

 5C3F36

 432820

 2D140A

 150000

 000000

 E2BDB2

 E2BDB2

 E2AC9B

 E2CEC9

 E29A85

 E2E0DF

 E2896E

 E2F1F6

 E27758

 E2FFFF

 E26641

 E2542A

 E24314

 E23400

Harmonies

Analogous

The Analogous color harmony consists of three colors that are next to each other on the color wheel.



E4BBBF



E2BDB2



D9C1AA

Triad

The Triadic color harmony groups three colors that are evenly spaced from another and form a triangle on the color wheel.



E2BDB2



AACDBC



BDC4E1

Complementary

The Complementary color scheme is a pair of colors which are on the opposite of each other on the color wheel.



E2BDB2



B2D7E2

Split Complementary

Split-complementary colors differ from the complementary color scheme. The scheme consists of three colors, the original color and two neighbors of the complement color.



ABC9E0



E2BDB2



A1CECB

Square

The Square scheme is like the rectangle color scheme, but the four colors are evenly spaced on the color wheel.



E2BDB2



BACAAF



A1CCD8



CFBFDA

Rectangle

The Rectangle color scheme consists of four colors that form a rectangle on the color wheel.



E2BDB2



D0C4A8



A1CCD8



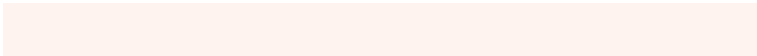
B7C6E2

Sweetspot

The Sweet Spot groups the original color and five complimentary colors.



E2BDB2



FFF3F0



E2B2D8



807977



000000



808080

Same Dimension

The Same Dimension uses a secret algorithm to generate beautiful new colors.



E2BDB2



FFCEBF



E2D4B2



706865



B02800



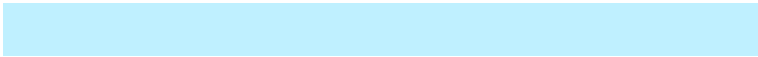
300B00

Inverse Universe

The Inverse Universe completely reimagines the original color for something new.



B2D7E2



BFF0FF



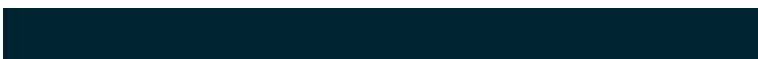
B2C0E2



656E70



0088B0



002530

Previews

White Background



This preview shows how the Hex color E2BDB2 looks on a white background.

Color Contrast Check

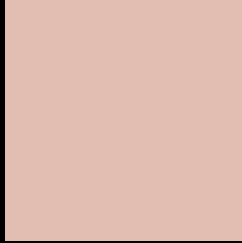
Large Text (above 18pt) WCAG AA × Fail

Any Text WCAG AA × Fail

Large Text (above 18pt) WCAG AAA × Fail

Any Text WCAG AAA × Fail

Black Background



This preview shows how the Hex color E2BDB2 looks on a black background.

Color Contrast Check

Large Text (above 18pt) WCAG AA ✓ Pass

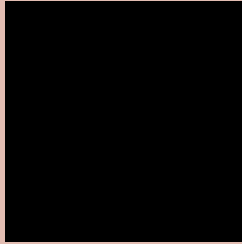
Any Text WCAG AA ✓ Pass

Large Text (above 18pt) WCAG AAA ✓ Pass

Any Text WCAG AAA ✓ Pass

If you want to check with other color combinations, try the [Color Contrast Checker](#).

Hex E2BDB2 Background



This preview shows how black text looks on a background with the Hex color E2BDB2.

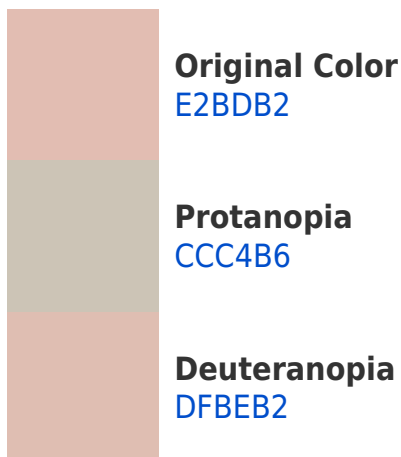



This preview shows how white text looks on a background with the Hex color E2BDB2.

Color Blindness Simulation

Color vision deficiency is a very complex topic, and I could not describe the different causes any better than Wikipedia does, so if you want to learn more, you should check out their [article about color blindness](#).

Dichromacy





Tritanopia
E5BAC8

Trichromacy



Original Color
E2BDB2

Protanomaly
D4C1B5

Deuteranomaly
E0BEB2

Tritanomaly
E4BBC0

Monochromacy



Original Color
E2BDB2

Achromatopsia
C7C7C7

Achromatomaly
D1C3BF

CSS Examples

Text

The CSS property to change the color of the text to Hex E2BDB2 is called "color". The color property can be set on classes, ids or directly on the HTML element.

This example shows how text in the color #E2BDB2 looks like.

```
.text, #text, p{  
    color:#E2BDB2  
}
```

If you want to add a text shadow in that color use the text-shadow property, you can generate a text shadow directly with our [CSS Text Shadow Generator](#).

Here you see how black text with a 4 pixel #E2BDB2 colored shadow looks like.

```
.shadow{ text-shadow: 4px 4px 2px #E2BDB2
}
```

Border

The CSS property to change the border of an element to Hex E2BDB2 is called "border". The border property can be set on classes, ids or directly on the HTML element.

This example shows the color as border, it can be applied via the CSS property "border" or "border-color".

```
.border, #border, table{ border:4px solid
#E2BDB2 }
```

If only the border color should be changed use the property `border-color`.

```
.border{ border-color:#E2BDB2 }
```

If you want to add a box shadow in that color use:

Here you see how a box with a 4 pixel #E2BDB2 colored shadow looks like.

```
.boxshadow{ -moz-box-shadow:4px 4px 4px  
4px #E2BDB2; -webkit-box-shadow:4px 4px  
4px 4px #E2BDB2; box-shadow:4px 4px 4px  
4px #E2BDB2 }
```

Background

The CSS property to change the background color of an element to Hex E2BDB2 is called "background". The background property can be set on classes, ids or directly on the HTML element.

```
.background, #background, body{  
background:#E2BDB2 }
```

If only the background color should be changed can be used:

```
.background{ background-color:#E2BDB2 }
```

This example shows the color as background, it is applied via the CSS property "background".

To optimize and compress your CSS code, you can use our [online CSS compressor and optimizer](#) based on csstidy. If you want to create a linear or radial gradient as background or border, check our [CSS Gradient Generator](#).

Hey! You found this booklet interesting? Support Converting Colors with the new Membership Option!

The pro membership hides all ads, plus gives you double the colors in the color bucket, and more awesome pro features!

[Learn more, Memberships starting at \\$2.50/m!](#)

**Follow me
on Twitter!**

@ConvertingColor