

Converting Colors

Hex(E2C4C1)

Have a look what the booklet for
Hex(E2C4C1) contains.

Hex(E2C4C1)	3
<i>Conversions</i>	4
<i>Details</i>	6
<i>Harmonies</i>	11
<i>Previews</i>	23
<i>Color Blindness Simulation</i>	26
<i>CSS Examples</i>	29

Color

Hex(E2C4C1)

Conversions

Conversions Part 1

Format	Color
Hex	E2C4C1
RGB	226, 196, 193
RGB Percent	89%, 77%, 76%
CMY	0.1137, 0.2314, 0.2431
CMYK	0.00, 0.13, 0.15, 0.11
HSL	5°, 36%, 82%
HSV	5°, 15%, 89%
XYZ	60.7296, 59.4989, 58.7357
YIQ	204.6280, 18.8430, 5.4270

Conversions

Conversions Part 2

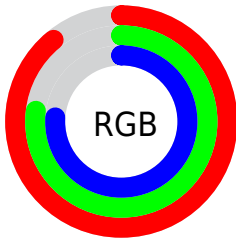
Format	Color
R _Y B	226, 196, 193
Decimal	14861505
CIE Lab	81.57, 10.11, 5.41
CIE LCh	82, 11.466, 28.137
Yxy	59.4989, 0.3393, 0.3325
Android (android.graphics.Color)	4293051585 (0xFFE2C4C1)
YUV	204.6280, -5.7326, 18.7432
Hunter-Lab	77.1355, 5.5478, 8.8478

Details

The Hex color **E2C4C1** is a light color, and the websafe version is hex **FFCCCC**. A complement of this color would be **C1DFE2**, and the grayscale version is **CDCDCD**.

A 20% lighter version of the original color is **FFFDF9**, and **AA8E8C** is the 20% darker color. If you saturate the color by 10%, you get **E2AFAA**, and if you desaturate by 10%, it is **E2D9D8**.

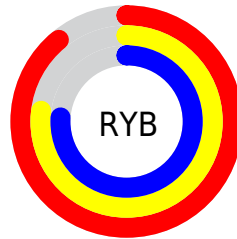
Distribution



Red (89%)

Green (77%)

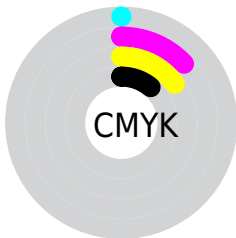
Blue (76%)



Red (89%)

Yellow (77%)

Blue (76%)

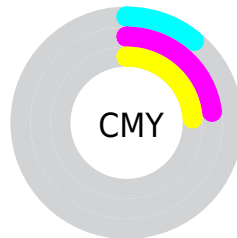


Cyan (0%)

Magenta (13%)

Yellow (15%)

Black (11%)



Cyan (11%)

Magenta (23%)

Yellow (24%)

Brightness & Saturation Gradients

These gradients show how the Hex color E2C4C1 changes by changing the brightness by 10 percent. The first figure shows a shift by +10% for each color and the second figure -10%.

Similar to the brightness gradients but the following saturation gradients show a change of the Hex color E2C4C1 by changing the saturation by 10% instead.

 E2C4C1

 E2C4C1

FFFFFF

 C6A9A6

 FFFDF9

 AA8E8C

 907572

 765C5A

 5D4442

 452E2C

 2E1918

 1B0000

 000000

 E2C4C1

 E2C4C1

 E2AFAA

 E2D9D8

 E29B94

 E2EDEE

 E2867D

 E2FFFF

 E27267

 E25D50

 E24939

 E23423

 E2200C

 E21500

Harmonies

Analogous

The Analogous color harmony consists of three colors that are next to each other on the color wheel.



E0C4CC



E2C4C1



DEC6B9

Triad

The Triadic color harmony groups three colors that are evenly spaced from another and form a triangle on the color wheel.



E2C4C1



BCD0BF



BFCCE0

Complementary

The Complementary color scheme is a pair of colors which are on the opposite of each other on the color wheel.



E2C4C1



C1DFE2

Split Complementary

Split-complementary colors differ from the complementary color scheme. The scheme consists of three colors, the original color and two neighbors of the complement color.



B4CFDD



E2C4C1



B3D1CA

Square

The Square scheme is like the rectangle color scheme, but the four colors are evenly spaced on the color wheel.



E2C4C1



C8CDB8



B0D1D4



CCC8DE

Rectangle

The Rectangle color scheme consists of four colors that form a rectangle on the color wheel.



E2C4C1



D8C8B6



B0D1D4



BBCDDF

Sweetspot

The Sweet Spot groups the original color and five complimentary colors.



E2C4C1



FFF6F5



E2C1DF



807A79



000000



808080

Same Dimension

The Same Dimension uses a secret algorithm to generate beautiful new colors.



E2C4C1



FFD5D1



E2D4C1



706665



B01000



300400

Inverse Universe

The Inverse Universe completely reimagines the original color for something new.



C1DFE2



D1FBFF



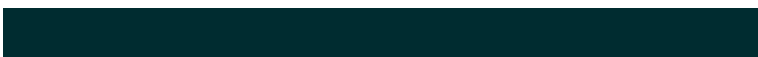
C1CFE2



656F70



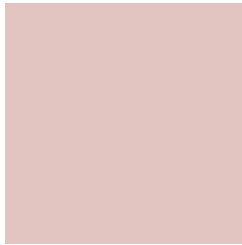
00A0B0



002C30

Previews

White Background



This preview shows how the Hex color E2C4C1 looks on a white background.

Color Contrast Check

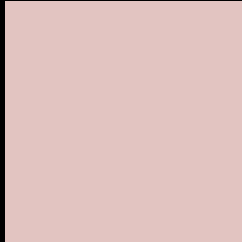
Large Text (above 18pt) WCAG AA × Fail

Any Text WCAG AA × Fail

Large Text (above 18pt) WCAG AAA × Fail

Any Text WCAG AAA × Fail

Black Background



This preview shows how the Hex color E2C4C1 looks on a black background.

Color Contrast Check

Large Text (above 18pt) WCAG AA ✓ Pass

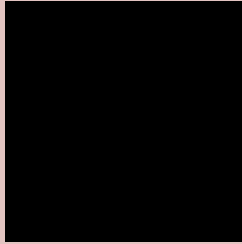
Any Text WCAG AA ✓ Pass

Large Text (above 18pt) WCAG AAA ✓ Pass

Any Text WCAG AAA ✓ Pass

If you want to check with other color combinations, try the [Color Contrast Checker](#).

Hex E2C4C1 Background



This preview shows how black text looks on a background with the Hex color E2C4C1.

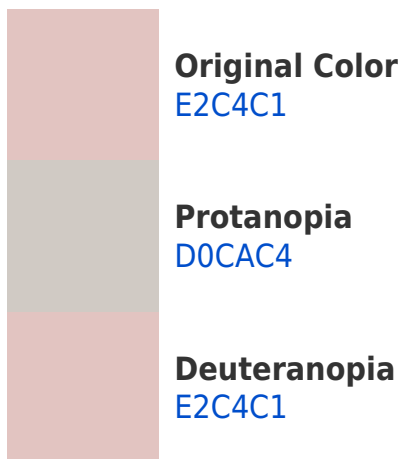


This preview shows how white text looks on a background with the Hex color E2C4C1.

Color Blindness Simulation

Color vision deficiency is a very complex topic, and I could not describe the different causes any better than Wikipedia does, so if you want to learn more, you should check out their [article about color blindness](#).

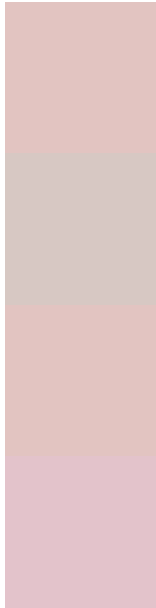
Dichromacy





Tritanopia
E4C2D1

Trichromacy



Original Color
E2C4C1

Protanomaly
D7C8C3

Deuteranomaly
E2C4C1

Tritanomaly
E3C3CB

Monochromacy



Original Color
E2C4C1

Achromatopsia
CDCDCD

Achromatomaly
D5CAC9

CSS Examples

Text

The CSS property to change the color of the text to Hex E2C4C1 is called "color". The color property can be set on classes, ids or directly on the HTML element.

This example shows how text in the color #E2C4C1 looks like.

```
.text, #text, p{  
    color:#E2C4C1  
}
```

If you want to add a text shadow in that color use the text-shadow property, you can generate a text shadow directly with our [CSS Text Shadow Generator](#).

Here you see how black text with a 4 pixel #E2C4C1 colored shadow looks like.

```
.shadow{ text-shadow: 4px 4px 2px #E2C4C1
}
```

Border

The CSS property to change the border of an element to Hex E2C4C1 is called "border". The border property can be set on classes, ids or directly on the HTML element.

This example shows the color as border, it can be applied via the CSS property "border" or "border-color".

```
.border, #border, table{ border:4px solid
#E2C4C1 }
```

If only the border color should be changed use the property `border-color`.

```
.border{ border-color:#E2C4C1 }
```

If you want to add a box shadow in that color use:

Here you see how a box with a 4 pixel #E2C4C1 colored shadow looks like.

```
.boxshadow{ -moz-box-shadow:4px 4px 4px  
4px #E2C4C1; -webkit-box-shadow:4px 4px  
4px 4px #E2C4C1; box-shadow:4px 4px 4px  
4px #E2C4C1 }
```

Background

The CSS property to change the background color of an element to Hex E2C4C1 is called "background". The background property can be set on classes, ids or directly on the HTML element.

```
.background, #background, body{  
background:#E2C4C1 }
```

If only the background color should be changed can be used:

```
.background{ background-color:#E2C4C1 }
```

This example shows the color as background, it is applied via the CSS property "background".

To optimize and compress your CSS code, you can use our [online CSS compressor and optimizer](#) based on csstidy. If you want to create a linear or radial gradient as background or border, check our [CSS Gradient Generator](#).

Hey! You found this booklet interesting? Support Converting Colors with the new Membership Option!

The pro membership hides all ads, plus gives you double the colors in the color bucket, and more awesome pro features!

[Learn more, Memberships starting at \\$2.50/m!](#)

**Follow me
on Twitter!**

@ConvertingColor