

Converting Colors

Hex(E2C6AA)

Have a look what the booklet for
Hex(E2C6AA) contains.

Hex(E2C6AA)	3
<i>Conversions</i>	4
<i>Details</i>	6
<i>Harmonies</i>	11
<i>Previews</i>	23
<i>Color Blindness Simulation</i>	26
<i>CSS Examples</i>	29

Color

Hex(E2C6AA)

Conversions

Conversions Part 1

Format	Color
Hex	E2C6AA
RGB	226, 198, 170
RGB Percent	89%, 78%, 67%
CMY	0.1137, 0.2235, 0.3333
CMYK	0.00, 0.12, 0.25, 0.11
HSL	30°, 49%, 78%
HSV	30°, 25%, 89%
XYZ	58.8138, 59.4592, 46.4072
YIQ	203.1800, 25.6760, -2.7720

Conversions

Conversions Part 2

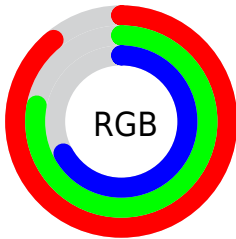
Format	Color
R _Y B	226, 226, 170
Decimal	14861994
CIE Lab	81.54, 5.63, 17.67
CIE LCh	82, 18.541, 72.332
Yxy	59.4592, 0.3571, 0.3611
Android (android.graphics.Color)	4293052074 (0xFFE2C6AA)
YUV	203.1800, -16.3577, 20.0131
Hunter-Lab	77.1098, 1.2049, 18.2942

Details

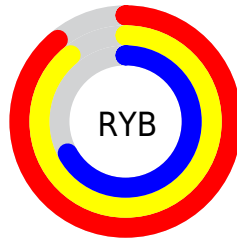
The Hex color **E2C6AA** is a light color, and the websafe version is hex **CCCC99**. A complement of this color would be **AAC6E2**, and the grayscale version is **CBCBCB**.

A 20% lighter version of the original color is **FFFFE1**, and **AA9076** is the 20% darker color. If you saturate the color by 10%, you get **E2BB93**, and if you desaturate by 10%, it is **E2D1C1**.

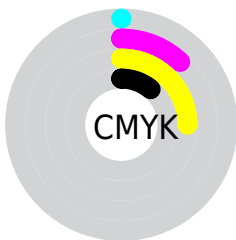
Distribution



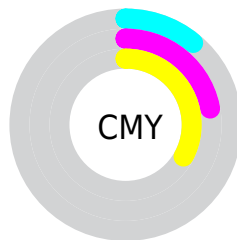
- Red (89%)
- Green (78%)
- Blue (67%)



- Red (89%)
- Yellow (89%)
- Blue (67%)



- Cyan (0%)
- Magenta (12%)
- Yellow (25%)
- Black (11%)



- Cyan (11%)
- Magenta (22%)
- Yellow (33%)

Brightness & Saturation Gradients

These gradients show how the Hex color E2C6AA changes by changing the brightness by 10 percent. The first figure shows a shift by +10% for each color and the second figure -10%.

Similar to the brightness gradients but the following saturation gradients show a change of the Hex color E2C6AA by changing the saturation by 10% instead.

 E2C6AA

 E2C6AA

FFFFFF

 C6AB8F

 FFFFE1

 AA9076

FFFFFFE

 8F775D

 755E45

 5C462F

 43301A

 2D1B00

 140100

 000000

 E2C6AA

 E2C6AA

 E2BB93

 E2D1C1

 E2AF7D

 E2DDD7

 E2A466

 E2E8EE

 E29950

 E2F3FF

 E28E39

 E2FFFF

 E28222

 E2770C

 E27100

Harmonies

Analogous

The Analogous color harmony consists of three colors that are next to each other on the color wheel.



EDC1B4



E2C6AA



D1CCA9

Triad

The Triadic color harmony groups three colors that are evenly spaced from another and form a triangle on the color wheel.



E2C6AA



9FD5D1



D7C4E4

Complementary

The Complementary color scheme is a pair of colors which are on the opposite of each other on the color wheel.



E2C6AA



AAC6E2

Split Complementary

Split-complementary colors differ from the complementary color scheme. The scheme consists of three colors, the original color and two neighbors of the complement color.



C1CAEC



E2C6AA



9ED3E1

Square

The Square scheme is like the rectangle color scheme, but the four colors are evenly spaced on the color wheel.



E2C6AA



ABD4C0



ABCFEB



E7C0D6

Rectangle

The Rectangle color scheme consists of four colors that form a rectangle on the color wheel.



E2C6AA



C4CFAD



ABC FEB



D0C6E8

Sweetspot

The Sweet Spot groups the original color and five complimentary colors.



E2C6AA



FFF6ED



E2AAC6



807A75



000000



808080

Same Dimension

The Same Dimension uses a secret algorithm to generate beautiful new colors.



E2C6AA



FFD9B3



E2E2AA



706B65



B05800



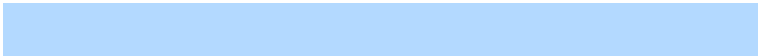
301800

Inverse Universe

The Inverse Universe completely reimagines the original color for something new.



AAC6E2



B3D9FF



AAAAE2



656B70



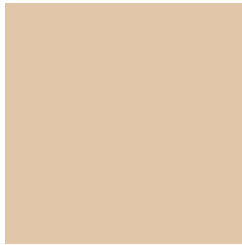
0058B0



001830

Previews

White Background



This preview shows how the Hex color E2C6AA looks on a white background.

Color Contrast Check

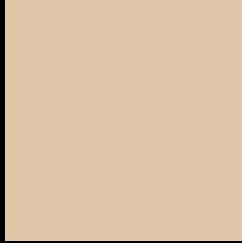
Large Text (above 18pt) WCAG AA × Fail

Any Text WCAG AA × Fail

Large Text (above 18pt) WCAG AAA × Fail

Any Text WCAG AAA × Fail

Black Background



This preview shows how the Hex color E2C6AA looks on a black background.

Color Contrast Check

Large Text (above 18pt) WCAG AA ✓ Pass

Any Text WCAG AA ✓ Pass

Large Text (above 18pt) WCAG AAA ✓ Pass

Any Text WCAG AAA ✓ Pass

If you want to check with other color combinations, try the [Color Contrast Checker](#).

Hex E2C6AA Background



This preview shows how black text looks on a background with the Hex color E2C6AA.

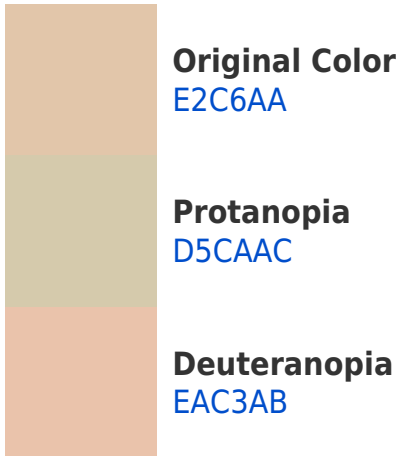


This preview shows how white text looks on a background with the Hex color E2C6AA.

Color Blindness Simulation

Color vision deficiency is a very complex topic, and I could not describe the different causes any better than Wikipedia does, so if you want to learn more, you should check out their [article about color blindness](#).

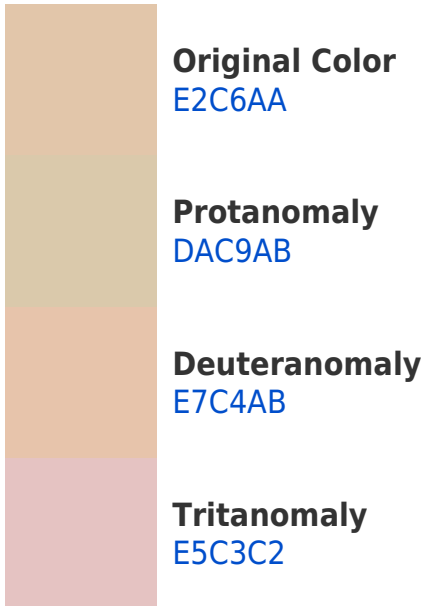
Dichromacy



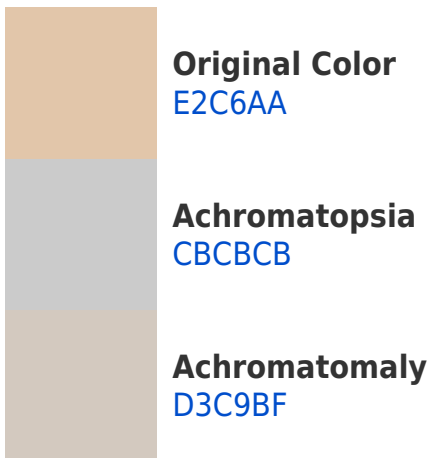


Tritanopia
E7C1D0

Trichromacy



Monochromacy



CSS Examples

Text

The CSS property to change the color of the text to Hex E2C6AA is called "color". The color property can be set on classes, ids or directly on the HTML element.

This example shows how text in the color #E2C6AA looks like.

```
.text, #text, p{  
    color:#E2C6AA  
}
```

If you want to add a text shadow in that color use the text-shadow property, you can generate a text shadow directly with our [CSS Text Shadow Generator](#).

Here you see how black text with a 4 pixel #E2C6AA colored shadow looks like.

```
.shadow{ text-shadow: 4px 4px 2px #E2C6AA
}
```

Border

The CSS property to change the border of an element to Hex E2C6AA is called "border". The border property can be set on classes, ids or directly on the HTML element.

This example shows the color as border, it can be applied via the CSS property "border" or "border-color".

```
.border, #border, table{ border:4px solid
#E2C6AA }
```

If only the border color should be changed use the property `border-color`.

```
.border{ border-color:#E2C6AA }
```

If you want to add a box shadow in that color use:

Here you see how a box with a 4 pixel #E2C6AA colored shadow looks like.

```
.boxshadow{ -moz-box-shadow:4px 4px 4px  
4px #E2C6AA; -webkit-box-shadow:4px 4px  
4px 4px #E2C6AA; box-shadow:4px 4px 4px  
4px #E2C6AA }
```

Background

The CSS property to change the background color of an element to Hex E2C6AA is called "background". The background property can be set on classes, ids or directly on the HTML element.

```
.background, #background, body{  
background:#E2C6AA }
```

If only the background color should be changed can be used:

```
.background{ background-color:#E2C6AA }
```

This example shows the color as background, it is applied via the CSS property "background".

To optimize and compress your CSS code, you can use our [online CSS compressor and optimizer](#) based on csstidy. If you want to create a linear or radial gradient as background or border, check our [CSS Gradient Generator](#).

Hey! You found this booklet interesting? Support Converting Colors with the new Membership Option!

The pro membership hides all ads, plus gives you double the colors in the color bucket, and more awesome pro features!

[Learn more, Memberships starting at \\$2.50/m!](#)

**Follow me
on Twitter!**

@ConvertingColor