

# Converting Colors

Hex(E2C6BF)

Have a look what the booklet for  
Hex(E2C6BF) contains.

<b>Hex(E2C6BF)</b> .....	3
<i><b>Conversions</b></i> .....	4
<i><b>Details</b></i> .....	6
<i><b>Harmonies</b></i> .....	11
<i><b>Previews</b></i> .....	23
<i><b>Color Blindness Simulation</b></i> .....	26
<i><b>CSS Examples</b></i> .....	29

# **Color**

**Hex(E2C6BF)**

# Conversions

## Conversions Part 1

Format	Color
Hex	E2C6BF
RGB	226, 198, 191
RGB Percent	89%, 78%, 75%
CMY	0.1137, 0.2235, 0.2510
CMYK	0.00, 0.12, 0.15, 0.11
HSL	12°, 38%, 82%
HSV	12°, 15%, 89%
XYZ	60.9621, 60.3185, 57.7198
YIQ	205.5740, 18.9350, 3.7590

# Conversions

## Conversions Part 2

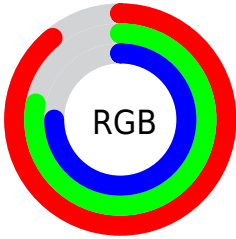
Format	Color
R <sub>Y</sub> B	226, 200, 191
Decimal	14862015
CIE Lab	82.01, 8.74, 7.12
CIE LCh	82, 11.271, 39.177
Yxy	60.3185, 0.3406, 0.3370
Android (android.graphics.Color)	4293052095 (0xFFE2C6BF)
YUV	205.5740, -7.1850, 17.9136
Hunter-Lab	77.6650, 4.1974, 10.3018

# Details

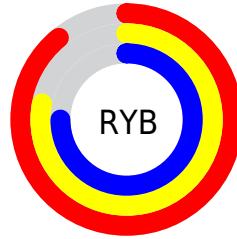
The Hex color **E2C6BF** is a light color, and the websafe version is hex **FFCCCC**. A complement of this color would be **BFDBE2**, and the grayscale version is **CECECE**.

A 20% lighter version of the original color is **FFFFFF7**, and **AA908A** is the 20% darker color. If you saturate the color by 10%, you get **E2B4A8**, and if you desaturate by 10%, it is **E2D8D6**.

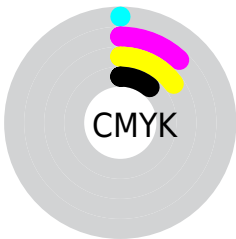
# Distribution



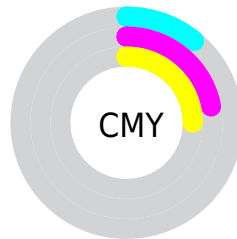
- Red (89%)
- Green (78%)
- Blue (75%)



- Red (89%)
- Yellow (78%)
- Blue (75%)



- Cyan (0%)
- Magenta (12%)
- Yellow (15%)
- Black (11%)



- Cyan (11%)
- Magenta (22%)
- Yellow (25%)

# Brightness & Saturation Gradients

These gradients show how the Hex color E2C6BF changes by changing the brightness by 10 percent. The first figure shows a shift by +10% for each color and the second figure -10%.

Similar to the brightness gradients but the following saturation gradients show a change of the Hex color E2C6BF by changing the saturation by 10% instead.



 E2C6BF

FFFFFF

 FFFFF7

 E2C6BF

 C6ABA4

 AA908A

 907770

 765E58

 5D4641

 45302B

 2E1B16

 1A0000

 000000

 E2C6BF

 E2C6BF

 E2B4A8

 E2D8D6

 E2A292

 E2EAEC

 E2907B

 E2FCFF

 E27E65

 E2FFFF

 E26C4E

 E25A37

 E24721

 E2350A

 E22D00

# Harmonies

## Analogous

The Analogous color harmony consists of three colors that are next to each other on the color wheel.



E2C5C9



E2C6BF



DCC9B8

# Triad

The Triadic color harmony groups three colors that are evenly spaced from another and form a triangle on the color wheel.



E2C6BF



BAD2C4



C5CCE1

# Complementary

The Complementary color scheme is a pair of colors which are on the opposite of each other on the color wheel.



E2C6BF



BFDBE2

# Split Complementary

Split-complementary colors differ from the complementary color scheme. The scheme consists of three colors, the original color and two neighbors of the complement color.



B9CFDF



E2C6BF



B3D2CF

# Square

The Square scheme is like the rectangle color scheme, but the four colors are evenly spaced on the color wheel.



E2C6BF



C5CFBB



B2D1D9



D2C8DC

# Rectangle

The Rectangle color scheme consists of four colors that form a rectangle on the color wheel.



E2C6BF



D5CBB7



B2D1D9



C1CDE1



# Sweetspot

The Sweet Spot groups the original color and five complimentary colors.



E2C6BF



FFF5F2



E2BFDB



807978



000000



808080



# Same Dimension

The Same Dimension uses a secret algorithm to generate beautiful new colors.



E2C6BF



FFD8CF



E2D8BF



706765



B02300



300A00

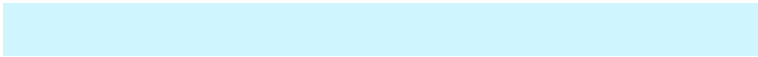


# Inverse Universe

The Inverse Universe completely reimagines the original color for something new.



**BFDBE2**



**CFF5FF**



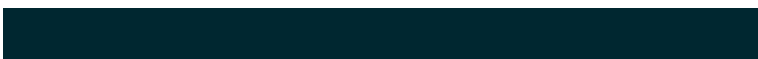
**BFCAE2**



**656E70**



**008DB0**

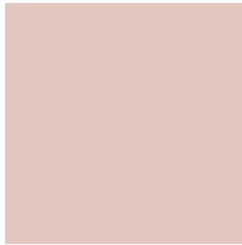


**002730**



# Previews

## White Background



This preview shows how the Hex color E2C6BF looks on a white background.

## Color Contrast Check

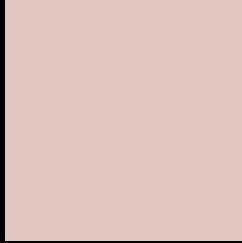
Large Text (above 18pt) WCAG AA × Fail

Any Text WCAG AA × Fail

Large Text (above 18pt) WCAG AAA × Fail

Any Text WCAG AAA × Fail

# Black Background



This preview shows how the Hex color E2C6BF looks on a black background.

## Color Contrast Check

Large Text (above 18pt) WCAG AA ✓ Pass

Any Text WCAG AA ✓ Pass

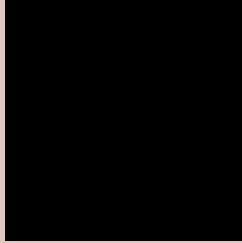
Large Text (above 18pt) WCAG AAA ✓ Pass

Any Text WCAG AAA ✓ Pass

If you want to check with other color combinations, try the [Color Contrast Checker](#).



## Hex E2C6BF Background



This preview shows how black text looks on a background with the Hex color E2C6BF.

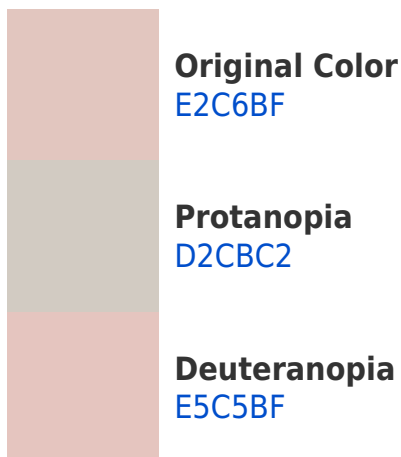


This preview shows how white text looks on a background with the Hex color E2C6BF.

# Color Blindness Simulation

Color vision deficiency is a very complex topic, and I could not describe the different causes any better than Wikipedia does, so if you want to learn more, you should check out their [article about color blindness](#).

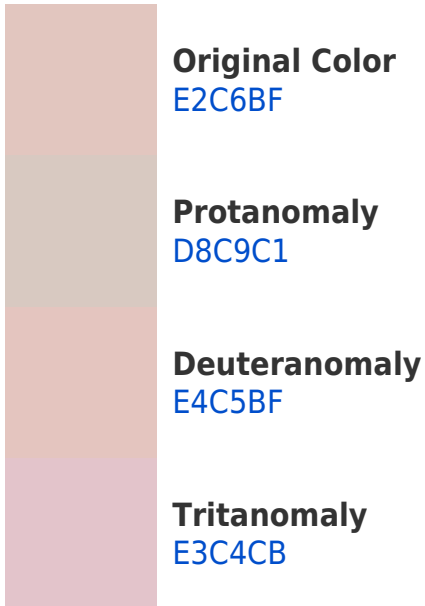
## Dichromacy



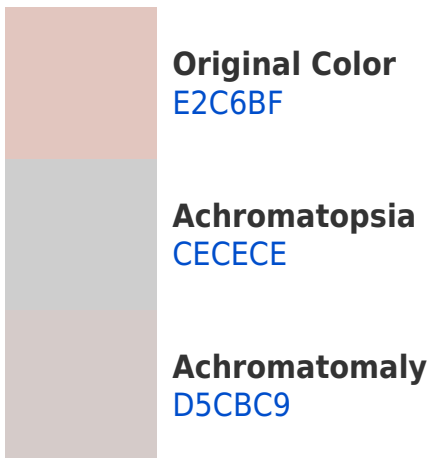


**Tritanopia**  
E4C3D2

# Trichromacy



# Monochromacy



# CSS Examples

## Text

The CSS property to change the color of the text to Hex E2C6BF is called "color". The color property can be set on classes, ids or directly on the HTML element.

This example shows how text in the color #E2C6BF looks like.

```
.text, #text, p{  
    color:#E2C6BF  
}
```

If you want to add a text shadow in that color use the text-shadow property, you can generate a text shadow directly with our [CSS Text Shadow Generator](#).

Here you see how black text with a 4 pixel #E2C6BF colored shadow looks like.

```
.shadow{ text-shadow: 4px 4px 2px #E2C6BF
}
```

## Border

The CSS property to change the border of an element to Hex E2C6BF is called "border". The border property can be set on classes, ids or directly on the HTML element.

This example shows the color as border, it can be applied via the CSS property "border" or "border-color".

```
.border, #border, table{ border:4px solid
#E2C6BF }
```

If only the border color should be changed use the property `border-color`.

```
.border{ border-color:#E2C6BF }
```

If you want to add a box shadow in that color use:

Here you see how a box with a 4 pixel #E2C6BF colored shadow looks like.

```
.boxshadow{ -moz-box-shadow:4px 4px 4px  
4px #E2C6BF; -webkit-box-shadow:4px 4px  
4px 4px #E2C6BF; box-shadow:4px 4px 4px  
4px #E2C6BF }
```

# Background

The CSS property to change the background color of an element to Hex E2C6BF is called "background". The background property can be set on classes, ids or directly on the HTML element.

```
.background, #background, body{  
background:#E2C6BF }
```

If only the background color should be changed can be used:

```
.background{ background-color:#E2C6BF }
```

This example shows the color as background, it is applied via the CSS property "background".

To optimize and compress your CSS code, you can use our [online CSS compressor and optimizer](#) based on csstidy. If you want to create a linear or radial gradient as background or border, check our [CSS Gradient Generator](#).



Hey! You found this booklet interesting? Support Converting Colors with the new Membership Option!

The pro membership hides all ads, plus gives you double the colors in the color bucket, and more awesome pro features!

**[Learn more, Memberships starting at \\$2.50/m!](#)**

**Follow me  
on Twitter!**

@ConvertingColor