

Converting Colors

Hex(E2C8CA)

Have a look what the booklet for
Hex(E2C8CA) contains.

Hex(E2C8CA)	3
<i>Conversions</i>	4
<i>Details</i>	6
<i>Harmonies</i>	11
<i>Previews</i>	23
<i>Color Blindness Simulation</i>	26
<i>CSS Examples</i>	29

Color

Hex(E2C8CA)

Conversions

Conversions Part 1

Format	Color
Hex	E2C8CA
RGB	226, 200, 202
RGB Percent	89%, 78%, 79%
CMY	0.1137, 0.2157, 0.2078
CMYK	0.00, 0.12, 0.11, 0.11
HSL	355°, 31%, 84%
HSV	355°, 12%, 89%
XYZ	62.6790, 61.7416, 64.4909
YIQ	208.0020, 14.8540, 6.1340

Conversions

Conversions Part 2

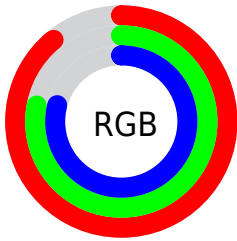
Format	Color
R _Y B	226, 200, 202
Decimal	14862538
CIE Lab	82.78, 9.45, 2.34
CIE LCh	83, 9.737, 13.916
Yxy	61.7416, 0.3318, 0.3268
Android (android.graphics.Color)	4293052618 (0xFFE2C8CA)
YUV	208.0020, -2.9590, 15.7842
Hunter-Lab	78.5758, 4.8796, 6.3409

Details

The Hex color **E2C8CA** is a light color, and the websafe version is hex **CCCCCC**. A complement of this color would be **C8E2E0**, and the grayscale version is **D0D0D0**.

A 20% lighter version of the original color is **FFFFFF**, and **AB9294** is the 20% darker color. If you saturate the color by 10%, you get **E2B1B5**, and if you desaturate by 10%, it is **E2DFDF**.

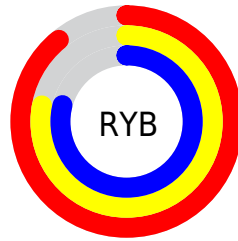
Distribution



Red (89%)

Green (78%)

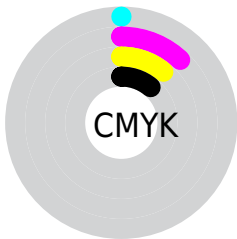
Blue (79%)



Red (89%)

Yellow (78%)

Blue (79%)

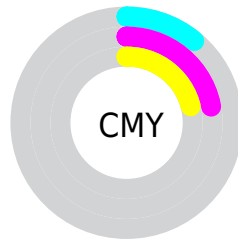


Cyan (0%)

Magenta (12%)

Yellow (11%)

Black (11%)



Cyan (11%)

Magenta (22%)

Yellow (21%)

Brightness & Saturation Gradients

These gradients show how the Hex color E2C8CA changes by changing the brightness by 10 percent. The first figure shows a shift by +10% for each color and the second figure -10%.

Similar to the brightness gradients but the following saturation gradients show a change of the Hex color E2C8CA by changing the saturation by 10% instead.

 E2C8CA

FFFFFF

 E2C8CA

 C6ADAF

 AB9294

 90787A

 766061

 5D484A

 453133

 2F1C1E

 1C0305

 000000

 E2C8CA

 E2C8CA

 E2B1B5

 E2DFDF

 E29BA0

 E2F5F4

 E2848B

 E2FFFF

 E26E77

 E25762

 E2404D

 E22A38

 E21323

 E20011

Harmonies

Analogous

The Analogous color harmony consists of three colors that are next to each other on the color wheel.



DEC8D3



E2C8CA



E1C9C2

Triad

The Triadic color harmony groups three colors that are evenly spaced from another and form a triangle on the color wheel.



E2C8CA



C7D1C1



BFD0DF

Complementary

The Complementary color scheme is a pair of colors which are on the opposite of each other on the color wheel.



E2C8CA



C8E2E0

Split Complementary

Split-complementary colors differ from the complementary color scheme. The scheme consists of three colors, the original color and two neighbors of the complement color.



B9D3DA



E2C8CA



BDD3C9

Square

The Square scheme is like the rectangle color scheme, but the four colors are evenly spaced on the color wheel.



E2C8CA



D1CFBC



B8D4D2



CACDE0

Rectangle

The Rectangle color scheme consists of four colors that form a rectangle on the color wheel.



E2C8CA



DDCBBE



B8D4D2



BDD1DE

Sweetspot

The Sweet Spot groups the original color and five complimentary colors.



E2C8CA



FFF7F8



E0C8E2



807A7B



000000



808080

Same Dimension

The Same Dimension uses a secret algorithm to generate beautiful new colors.



E2C8CA



FFDBDE



E2D3C8



706566



B0000E



300004

Inverse Universe

The Inverse Universe completely reimagines the original color for something new.



E2C8CA



FFDBDE



C8D7E2



706566



B0000E



300004

Previews

White Background



This preview shows how the Hex color E2C8CA looks on a white background.

Color Contrast Check

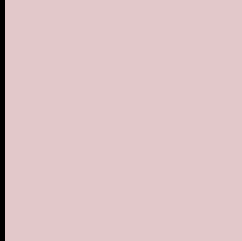
Large Text (above 18pt) WCAG AA × Fail

Any Text WCAG AA × Fail

Large Text (above 18pt) WCAG AAA × Fail

Any Text WCAG AAA × Fail

Black Background



This preview shows how the Hex color E2C8CA looks on a black background.

Color Contrast Check

Large Text (above 18pt) WCAG AA ✓ Pass

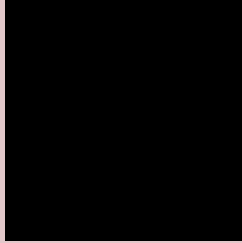
Any Text WCAG AA ✓ Pass

Large Text (above 18pt) WCAG AAA ✓ Pass

Any Text WCAG AAA ✓ Pass

If you want to check with other color combinations, try the [Color Contrast Checker](#).

Hex E2C8CA Background



This preview shows how black text looks on a background with the Hex color E2C8CA.

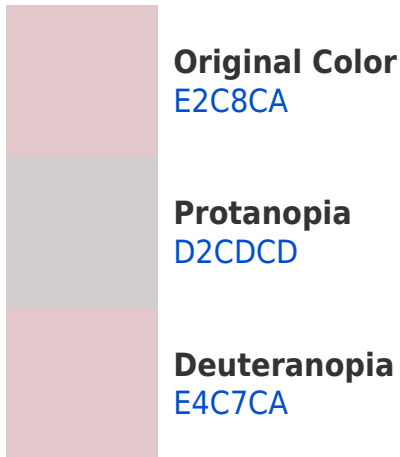


This preview shows how white text looks on a background with the Hex color E2C8CA.

Color Blindness Simulation

Color vision deficiency is a very complex topic, and I could not describe the different causes any better than Wikipedia does, so if you want to learn more, you should check out their [article about color blindness](#).

Dichromacy





Tritanopia
E4C6D6

Trichromacy



Original Color
E2C8CA

Protanomaly
D8CBCC

Deuteranomaly
E3C7CA

Tritanomaly
E3C7D2

Monochromacy



Original Color
E2C8CA

Achromatopsia
D0D0D0

Achromatomaly
D7CDCE

CSS Examples

Text

The CSS property to change the color of the text to Hex E2C8CA is called "color". The color property can be set on classes, ids or directly on the HTML element.

This example shows how text in the color #E2C8CA looks like.

```
.text, #text, p{  
    color:#E2C8CA  
}
```

If you want to add a text shadow in that color use the text-shadow property, you can generate a text shadow directly with our [CSS Text Shadow Generator](#).

Here you see how black text with a 4 pixel #E2C8CA colored shadow looks like.

```
.shadow{ text-shadow: 4px 4px 2px #E2C8CA
}
```

Border

The CSS property to change the border of an element to Hex E2C8CA is called "border". The border property can be set on classes, ids or directly on the HTML element.

This example shows the color as border, it can be applied via the CSS property "border" or "border-color".

```
.border, #border, table{ border:4px solid
#E2C8CA }
```

If only the border color should be changed use the property `border-color`.

```
.border{ border-color:#E2C8CA }
```

If you want to add a box shadow in that color use:

Here you see how a box with a 4 pixel #E2C8CA colored shadow looks like.

```
.boxshadow{ -moz-box-shadow:4px 4px 4px  
4px #E2C8CA; -webkit-box-shadow:4px 4px  
4px 4px #E2C8CA; box-shadow:4px 4px 4px  
4px #E2C8CA }
```

Background

The CSS property to change the background color of an element to Hex E2C8CA is called "background". The background property can be set on classes, ids or directly on the HTML element.

```
.background, #background, body{  
background:#E2C8CA }
```

If only the background color should be changed can be used:

```
.background{ background-color:#E2C8CA }
```

This example shows the color as background, it is applied via the CSS property "background".

To optimize and compress your CSS code, you can use our [online CSS compressor and optimizer](#) based on csstidy. If you want to create a linear or radial gradient as background or border, check our [CSS Gradient Generator](#).

Hey! You found this booklet interesting? Support Converting Colors with the new Membership Option!

The pro membership hides all ads, plus gives you double the colors in the color bucket, and more awesome pro features!

[Learn more, Memberships starting at \\$2.50/m!](#)

**Follow me
on Twitter!**

@ConvertingColor