

# Converting Colors

Hex(E2C9BF)

Have a look what the booklet for  
Hex(E2C9BF) contains.

<b>Hex(E2C9BF)</b> .....	3
<i><b>Conversions</b></i> .....	4
<i><b>Details</b></i> .....	6
<i><b>Harmonies</b></i> .....	11
<i><b>Previews</b></i> .....	23
<i><b>Color Blindness Simulation</b></i> .....	26
<i><b>CSS Examples</b></i> .....	29

# **Color**

**Hex(E2C9BF)**

# Conversions

## Conversions Part 1

Format	Color
Hex	E2C9BF
RGB	226, 201, 191
RGB Percent	89%, 79%, 75%
CMY	0.1137, 0.2118, 0.2510
CMYK	0.00, 0.11, 0.15, 0.11
HSL	17°, 38%, 82%
HSV	17°, 15%, 89%
XYZ	61.6546, 61.7036, 57.9507
YIQ	207.3350, 18.1100, 2.1900

# Conversions

## Conversions Part 2

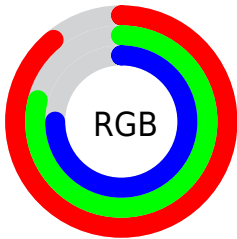
Format	Color
R <sub>Y</sub> B	226, 205, 191
Decimal	14862783
CIE Lab	82.76, 7.15, 8.19
CIE LCh	83, 10.874, 48.854
Yxy	61.7036, 0.3401, 0.3403
Android (android.graphics.Color)	4293052863 (0xFFE2C9BF)
YUV	207.3350, -8.0532, 16.3692
Hunter-Lab	78.5517, 2.6380, 11.2456

# Details

The Hex color **E2C9BF** is a light color, and the websafe version is hex **CCCCCC**. A complement of this color would be **BFD8E2**, and the grayscale version is **CFCFCF**.

A 20% lighter version of the original color is **FFFFFF7**, and **AA938A** is the 20% darker color. If you saturate the color by 10%, you get **E2B9A8**, and if you desaturate by 10%, it is **E2D9D6**.

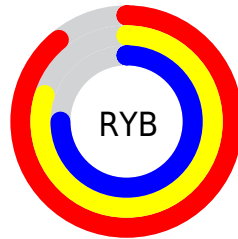
# Distribution



Red (89%)

Green (79%)

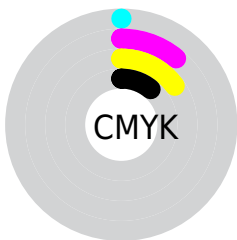
Blue (75%)



Red (89%)

Yellow (80%)

Blue (75%)

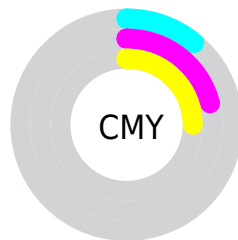


Cyan (0%)

Magenta (11%)

Yellow (15%)

Black (11%)



Cyan (11%)

Magenta (21%)

Yellow (25%)

# Brightness & Saturation Gradients

These gradients show how the Hex color E2C9BF changes by changing the brightness by 10 percent. The first figure shows a shift by +10% for each color and the second figure -10%.

Similar to the brightness gradients but the following saturation gradients show a change of the Hex color E2C9BF by changing the saturation by 10% instead.



 E2C9BF

 E2C9BF

FFFFFFF

 C6AEA4

 FFFFFF7

 AA938A

 907970

 766058

 5D4940

 45322A

 2E1D16

 1A0400

 000000

 E2C9BF

 E2C9BF

 E2B9A8

 E2D9D6

 E2A992

 E2E9EC

 E2997B

 E2F9FF

 E28865

 E2FFFF

 E2784E

 E26837

 E25821

 E2480A

 E24100

# Harmonies

## Analogous

The Analogous color harmony consists of three colors that are next to each other on the color wheel.



E4C7C8



E2C9BF



DACCBA

# Triad

The Triadic color harmony groups three colors that are evenly spaced from another and form a triangle on the color wheel.



E2C9BF



BAD4CA



CBCDE1

# Complementary

The Complementary color scheme is a pair of colors which are on the opposite of each other on the color wheel.



E2C9BF



BFD8E2

# Split Complementary

Split-complementary colors differ from the complementary color scheme. The scheme consists of three colors, the original color and two neighbors of the complement color.



BFD0E2



E2C9BF



B5D4D4

# Square

The Square scheme is like the rectangle color scheme, but the four colors are evenly spaced on the color wheel.



E2C9BF



C4D2C0



B7D3DD



D8C9DC

# Rectangle

The Rectangle color scheme consists of four colors that form a rectangle on the color wheel.



E2C9BF



D3CEBA



B7D3DD



C7CEE2



# Sweetspot

The Sweet Spot groups the original color and five complimentary colors.



E2C9BF



FFF6F2



E2BFD8



807A78



000000



808080

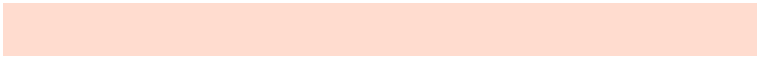


# Same Dimension

The Same Dimension uses a secret algorithm to generate beautiful new colors.



E2C9BF



FFDCCF



E2DABF



706865



B03200



300E00

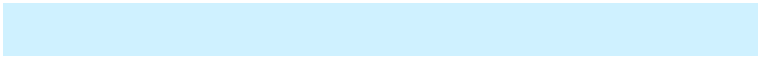


# Inverse Universe

The Inverse Universe completely reimagines the original color for something new.



BFD8E2



CFF1FF



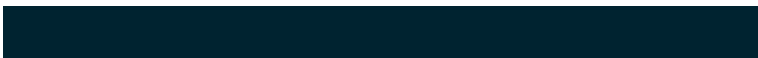
BFC7E2



656D70



007EB0

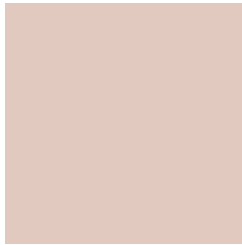


002330



# Previews

## White Background



This preview shows how the Hex color E2C9BF looks on a white background.

## Color Contrast Check

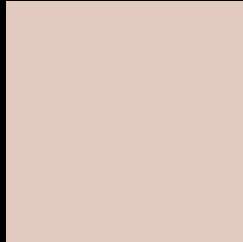
Large Text (above 18pt) WCAG AA × Fail

Any Text WCAG AA × Fail

Large Text (above 18pt) WCAG AAA × Fail

Any Text WCAG AAA × Fail

# Black Background



This preview shows how the Hex color E2C9BF looks on a black background.

## Color Contrast Check

Large Text (above 18pt) WCAG AA ✓ Pass

Any Text WCAG AA ✓ Pass

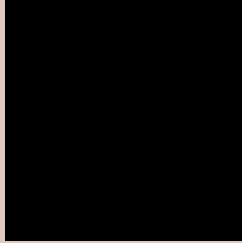
Large Text (above 18pt) WCAG AAA ✓ Pass

Any Text WCAG AAA ✓ Pass

If you want to check with other color combinations, try the [Color Contrast Checker](#).



## Hex E2C9BF Background



This preview shows how black text looks on a background with the Hex color E2C9BF.

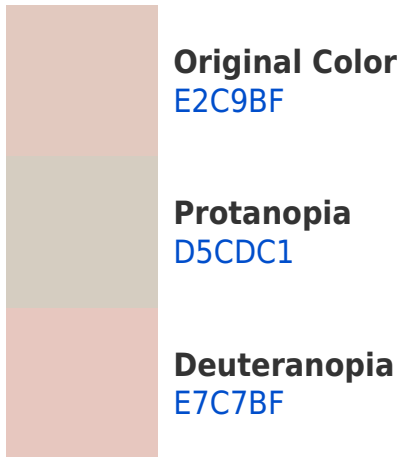


This preview shows how white text looks on a background with the Hex color E2C9BF.

# Color Blindness Simulation

Color vision deficiency is a very complex topic, and I could not describe the different causes any better than Wikipedia does, so if you want to learn more, you should check out their [article about color blindness](#).

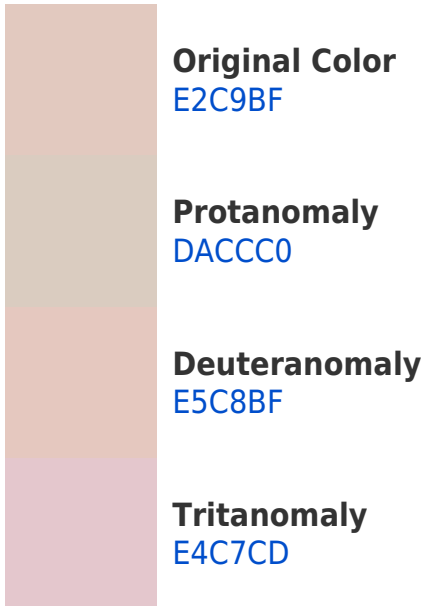
## Dichromacy



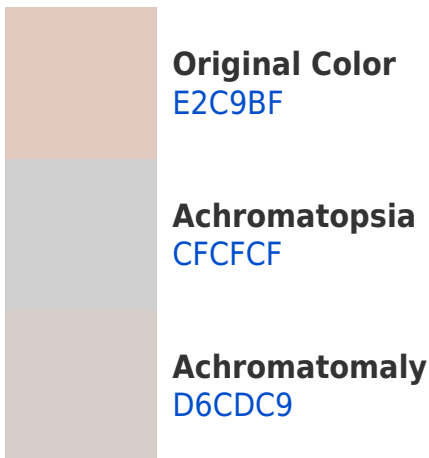


**Tritanopia**  
E5C6D5

# Trichromacy



# Monochromacy



# CSS Examples

## Text

The CSS property to change the color of the text to Hex E2C9BF is called "color". The color property can be set on classes, ids or directly on the HTML element.

This example shows how text in the color #E2C9BF looks like.

```
.text, #text, p{  
    color:#E2C9BF  
}
```

If you want to add a text shadow in that color use the text-shadow property, you can generate a text shadow directly with our [CSS Text Shadow Generator](#).

Here you see how black text with a 4 pixel #E2C9BF colored shadow looks like.

```
.shadow{ text-shadow: 4px 4px 2px #E2C9BF
}
```

## Border

The CSS property to change the border of an element to Hex E2C9BF is called "border". The border property can be set on classes, ids or directly on the HTML element.

This example shows the color as border, it can be applied via the CSS property "border" or "border-color".

```
.border, #border, table{ border:4px solid
#E2C9BF }
```

If only the border color should be changed use the property `border-color`.

```
.border{ border-color:#E2C9BF }
```

If you want to add a box shadow in that color use:

Here you see how a box with a 4 pixel #E2C9BF colored shadow looks like.

```
.boxshadow{ -moz-box-shadow:4px 4px 4px  
4px #E2C9BF; -webkit-box-shadow:4px 4px  
4px 4px #E2C9BF; box-shadow:4px 4px 4px  
4px #E2C9BF }
```

# Background

The CSS property to change the background color of an element to Hex E2C9BF is called "background". The background property can be set on classes, ids or directly on the HTML element.

```
.background, #background, body{  
background:#E2C9BF }
```

If only the background color should be changed can be used:

```
.background{ background-color:#E2C9BF }
```

This example shows the color as background, it is applied via the CSS property "background".

To optimize and compress your CSS code, you can use our [online CSS compressor and optimizer](#) based on csstidy. If you want to create a linear or radial gradient as background or border, check our [CSS Gradient Generator](#).



Hey! You found this booklet interesting? Support Converting Colors with the new Membership Option!

The pro membership hides all ads, plus gives you double the colors in the color bucket, and more awesome pro features!

**[Learn more, Memberships starting at \\$2.50/m!](#)**

**Follow me  
on Twitter!**

@ConvertingColor