

# Converting Colors

Hex(E2C9CE)

Have a look what the booklet for  
Hex(E2C9CE) contains.

<b>Hex(E2C9CE)</b> .....	3
<b><i>Conversions</i></b> .....	4
<b><i>Details</i></b> .....	6
<b><i>Harmonies</i></b> .....	11
<b><i>Previews</i></b> .....	23
<b><i>Color Blindness Simulation</i></b> .....	26
<b><i>CSS Examples</i></b> .....	29

# **Color**

**Hex(E2C9CE)**

# Conversions

## Conversions Part 1

Format	Color
Hex	E2C9CE
RGB	226, 201, 206
RGB Percent	89%, 79%, 81%
CMY	0.1137, 0.2118, 0.1922
CMYK	0.00, 0.11, 0.09, 0.11
HSL	348°, 30%, 84%
HSV	348°, 11%, 89%
XYZ	63.3913, 62.3983, 67.0955
YIQ	209.0450, 13.2950, 6.8550

# Conversions

## Conversions Part 2

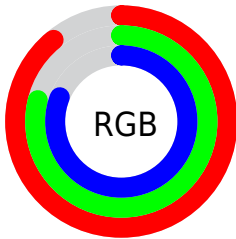
Format	Color
R <sub>Y</sub> B	226, 201, 206
Decimal	14862798
CIE Lab	83.12, 9.59, 0.71
CIE LCh	83, 9.616, 4.246
Yxy	62.3983, 0.3286, 0.3235
Android (android.graphics.Color)	4293052878 (0xFFE2C9CE)
YUV	209.0450, -1.5012, 14.8695
Hunter-Lab	78.9926, 5.0086, 4.9345

# Details

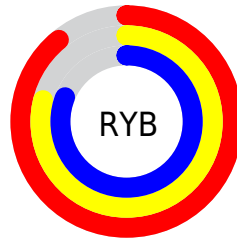
The Hex color **E2C9CE** is a light color, and the websafe version is hex **CCCCCC**. A complement of this color would be **C9E2DD**, and the grayscale version is **D1D1D1**.

A 20% lighter version of the original color is **FFFFFF**, and **AB9398** is the 20% darker color. If you saturate the color by 10%, you get **E2B2BC**, and if you desaturate by 10%, it is **E2E0E0**.

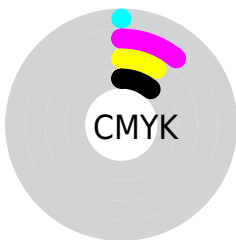
# Distribution



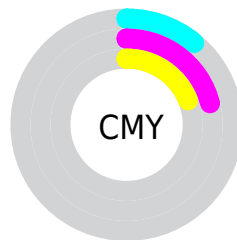
- Red (89%)
- Green (79%)
- Blue (81%)



- Red (89%)
- Yellow (79%)
- Blue (81%)



- Cyan (0%)
- Magenta (11%)
- Yellow (9%)
- Black (11%)



- Cyan (11%)
- Magenta (21%)
- Yellow (19%)

# Brightness & Saturation Gradients

These gradients show how the Hex color E2C9CE changes by changing the brightness by 10 percent. The first figure shows a shift by +10% for each color and the second figure -10%.

Similar to the brightness gradients but the following saturation gradients show a change of the Hex color E2C9CE by changing the saturation by 10% instead.



 E2C9CE

FFFFFF

 E2C9CE

 C6AEB3

 AB9398

 90797E

 766065

 5D494D

 453236

 2F1D21

 1C040A

 000000

 E2C9CE

 E2C9CE

 E2B2BC

 E2E0E0

 E29CAA

 E2F6F2

 E28598

 E2FFFF

 E26F86

 E25874

 E24162

 E22B4F

 E2143D

 E2002D

# Harmonies

## Analogous

The Analogous color harmony consists of three colors that are next to each other on the color wheel.



DCCAD7



E2C9CE



E3CAC5

# Triad

The Triadic color harmony groups three colors that are evenly spaced from another and form a triangle on the color wheel.



E2C9CE



CBD2C0



BED2DF

# Complementary

The Complementary color scheme is a pair of colors which are on the opposite of each other on the color wheel.



E2C9CE



C9E2DD

# Split Complementary

Split-complementary colors differ from the complementary color scheme. The scheme consists of three colors, the original color and two neighbors of the complement color.



B9D4D9



E2C9CE



C1D4C7

# Square

The Square scheme is like the rectangle color scheme, but the four colors are evenly spaced on the color wheel.



E2C9CE



D5CFBD



BAD5D0



C7CFE1

# Rectangle

The Rectangle color scheme consists of four colors that form a rectangle on the color wheel.



E2C9CE



E0CBC1



BAD5D0



BCD3DD

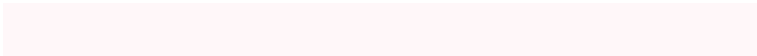


# Sweetspot

The Sweet Spot groups the original color and five complimentary colors.



E2C9CE



FFF7F9



DDC9E2



807A7B



000000



808080



# Same Dimension

The Same Dimension uses a secret algorithm to generate beautiful new colors.



E2C9CE



FFDEE4



E2D1C9



706567



B00023



30000A



# Inverse Universe

The Inverse Universe completely reimagines the original color for something new.



E2C9CE



FFDEE4



C9DBE2



706567



B00023

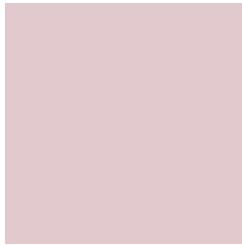


30000A



# Previews

## White Background



This preview shows how the Hex color E2C9CE looks on a white background.

## Color Contrast Check

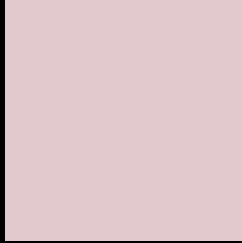
Large Text (above 18pt) WCAG AA × Fail

Any Text WCAG AA × Fail

Large Text (above 18pt) WCAG AAA × Fail

Any Text WCAG AAA × Fail

# Black Background



This preview shows how the Hex color E2C9CE looks on a black background.

## Color Contrast Check

Large Text (above 18pt) WCAG AA ✓ Pass

Any Text WCAG AA ✓ Pass

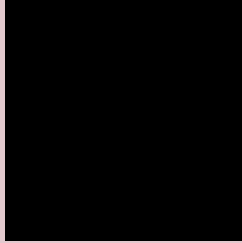
Large Text (above 18pt) WCAG AAA ✓ Pass

Any Text WCAG AAA ✓ Pass

If you want to check with other color combinations, try the [Color Contrast Checker](#).



## Hex E2C9CE Background



This preview shows how black text looks on a background with the Hex color E2C9CE.

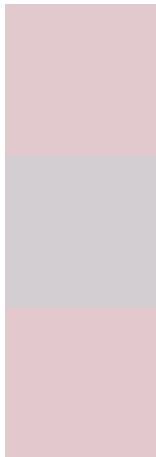


This preview shows how white text looks on a background with the Hex color E2C9CE.

# Color Blindness Simulation

Color vision deficiency is a very complex topic, and I could not describe the different causes any better than Wikipedia does, so if you want to learn more, you should check out their [article about color blindness](#).

## Dichromacy



**Original Color**  
E2C9CE

**Protanopia**  
D2CED1

**Deuteranopia**  
E3C8CE



**Tritanopia**  
E3C8D7

# Trichromacy



**Original Color**  
E2C9CE

**Protanomaly**  
D8CCD0

**Deuteranomaly**  
E3C8CE

**Tritanomaly**  
E3C8D4

# Monochromacy



**Original Color**  
E2C9CE

**Achromatopsia**  
D1D1D1

**Achromatomaly**  
D7CED0

# CSS Examples

## Text

The CSS property to change the color of the text to Hex E2C9CE is called "color". The color property can be set on classes, ids or directly on the HTML element.

This example shows how text in the color #E2C9CE looks like.

```
.text, #text, p{  
    color:#E2C9CE  
}
```

If you want to add a text shadow in that color use the text-shadow property, you can generate a text shadow directly with our [CSS Text Shadow Generator](#).

Here you see how black text with a 4 pixel #E2C9CE colored shadow looks like.

```
.shadow{ text-shadow: 4px 4px 2px #E2C9CE
}
```

## Border

The CSS property to change the border of an element to Hex E2C9CE is called "border". The border property can be set on classes, ids or directly on the HTML element.

This example shows the color as border, it can be applied via the CSS property "border" or "border-color".

```
.border, #border, table{ border:4px solid
#E2C9CE }
```

If only the border color should be changed use the property `border-color`.

```
.border{ border-color:#E2C9CE }
```

If you want to add a box shadow in that color use:

Here you see how a box with a 4 pixel #E2C9CE colored shadow looks like.

```
.boxshadow{ -moz-box-shadow:4px 4px 4px  
4px #E2C9CE; -webkit-box-shadow:4px 4px  
4px 4px #E2C9CE; box-shadow:4px 4px 4px  
4px #E2C9CE }
```

# Background

The CSS property to change the background color of an element to Hex E2C9CE is called "background". The background property can be set on classes, ids or directly on the HTML element.

```
.background, #background, body{  
background:#E2C9CE }
```

If only the background color should be changed can be used:

```
.background{ background-color:#E2C9CE }
```

This example shows the color as background, it is applied via the CSS property "background".

To optimize and compress your CSS code, you can use our [online CSS compressor and optimizer](#) based on csstidy. If you want to create a linear or radial gradient as background or border, check our [CSS Gradient Generator](#).



Hey! You found this booklet interesting? Support Converting Colors with the new Membership Option!

The pro membership hides all ads, plus gives you double the colors in the color bucket, and more awesome pro features!

**[Learn more, Memberships starting at \\$2.50/m!](#)**

**Follow me  
on Twitter!**

@ConvertingColor