

# Converting Colors

Hex(E2C9D4)

Have a look what the booklet for  
Hex(E2C9D4) contains.

<b>Hex(E2C9D4)</b> .....	3
<i><b>Conversions</b></i> .....	4
<i><b>Details</b></i> .....	6
<i><b>Harmonies</b></i> .....	11
<i><b>Previews</b></i> .....	23
<i><b>Color Blindness Simulation</b></i> .....	26
<i><b>CSS Examples</b></i> .....	29

# Color

Hex(E2C9D4)

# Conversions

## Conversions Part 1

Format	Color
Hex	E2C9D4
RGB	226, 201, 212
RGB Percent	89%, 79%, 83%
CMY	0.1137, 0.2118, 0.1686
CMYK	0.00, 0.11, 0.06, 0.11
HSL	334°, 30%, 84%
HSV	334°, 11%, 89%
XYZ	64.1343, 62.6955, 71.0086
YIQ	209.7290, 11.3690, 8.7210

# Conversions

## Conversions Part 2

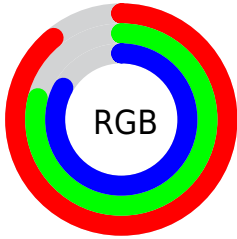
<b>Format</b>	<b>Color</b>
R <sub>Y</sub> B	226, 201, 212
Decimal	14862804
CIE Lab	83.28, 10.61, -2.26
CIE LCh	83, 10.851, 347.961
Yxy	62.6955, 0.3242, 0.3169
Android (android.graphics.Color)	4293052884 (0xFFE2C9D4)
YUV	209.7290, 1.1196, 14.2697
Hunter-Lab	79.1805, 6.0149, 2.2555

# Details

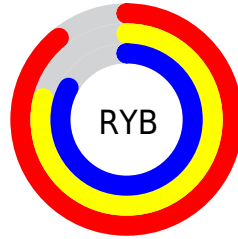
The Hex color **E2C9D4** is a light color, and the websafe version is hex **CCCCCC**. A complement of this color would be **C9E2D7**, and the grayscale version is **D2D2D2**.

A 20% lighter version of the original color is **FFFFFF**, and **AB939D** is the 20% darker color. If you saturate the color by 10%, you get **E2B2C7**, and if you desaturate by 10%, it is **E2E0E1**.

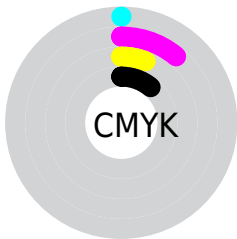
# Distribution



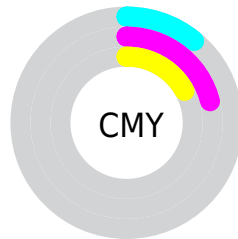
- Red (89%)
- Green (79%)
- Blue (83%)



- Red (89%)
- Yellow (79%)
- Blue (83%)



- Cyan (0%)
- Magenta (11%)
- Yellow (6%)
- Black (11%)



- Cyan (11%)
- Magenta (21%)
- Yellow (17%)

# Brightness & Saturation Gradients

These gradients show how the Hex color E2C9D4 changes by changing the brightness by 10 percent. The first figure shows a shift by +10% for each color and the second figure -10%.

Similar to the brightness gradients but the following saturation gradients show a change of the Hex color E2C9D4 by changing the saturation by 10% instead.



 E2C9D4

FFFFFF

 E2C9D4

 C6AEB8

 AB939D

 907983

 76606A

 5D4952

 46323B

 2F1D25

 1B0411

 000000

 E2C9D4

 E2C9D4

 E2B2C7

 E2E0E1

 E29CBB

 E2F6ED

 E285AE

 E2FFFA

 E26FA1

 E2FFFF

 E25895

 E24188

 E22B7B

 E2146F

 E20063

# Harmonies

## Analogous

The Analogous color harmony consists of three colors that are next to each other on the color wheel.



D9CBDD



E2C9D4



E6C9CA

# Triad

The Triadic color harmony groups three colors that are evenly spaced from another and form a triangle on the color wheel.



E2C9D4



D1D1BC



B8D4DE

# Complementary

The Complementary color scheme is a pair of colors which are on the opposite of each other on the color wheel.



E2C9D4



C9E2D7

# Split Complementary

Split-complementary colors differ from the complementary color scheme. The scheme consists of three colors, the original color and two neighbors of the complement color.



B6D6D5



E2C9D4



C5D4C2

# Square

The Square scheme is like the rectangle color scheme, but the four colors are evenly spaced on the color wheel.



E2C9D4



DCCDBC



BCD5CB



C0D2E3

# Rectangle

The Rectangle color scheme consists of four colors that form a rectangle on the color wheel.



E2C9D4



E5CAC3



BCD5CB



B7D5DC



# Sweetspot

The Sweet Spot groups the original color and five complimentary colors.



E2C9D4



FFF7FB



D7C9E2



807A7D



000000



808080



# Same Dimension

The Same Dimension uses a secret algorithm to generate beautiful new colors.



E2C9D4



FFDEEC



E2CAC9



70656A



B0004D



300015



# Inverse Universe

The Inverse Universe completely reimagines the original color for something new.



E2C9D4



FFDEEC



C9E1E2



70656A



B0004D

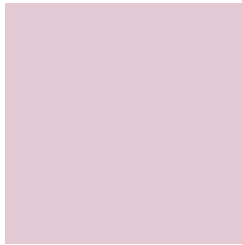


300015



# Previews

## White Background



This preview shows how the Hex color E2C9D4 looks on a white background.

## Color Contrast Check

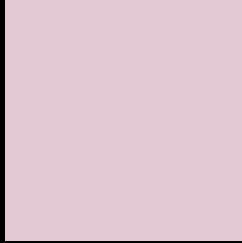
Large Text (above 18pt) WCAG AA × Fail

Any Text WCAG AA × Fail

Large Text (above 18pt) WCAG AAA × Fail

Any Text WCAG AAA × Fail

# Black Background



This preview shows how the Hex color E2C9D4 looks on a black background.

## Color Contrast Check

Large Text (above 18pt) WCAG AA ✓ Pass

Any Text WCAG AA ✓ Pass

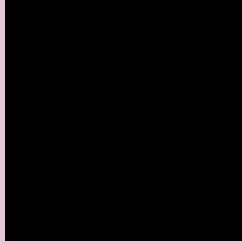
Large Text (above 18pt) WCAG AAA ✓ Pass

Any Text WCAG AAA ✓ Pass

If you want to check with other color combinations, try the [Color Contrast Checker](#).



## Hex E2C9D4 Background



This preview shows how black text looks on a background with the Hex color E2C9D4.



This preview shows how white text looks on a background with the Hex color E2C9D4.

# Color Blindness Simulation

Color vision deficiency is a very complex topic, and I could not describe the different causes any better than Wikipedia does, so if you want to learn more, you should check out their [article about color blindness](#).

## Dichromacy



**Original Color**  
E2C9D4

**Protanopia**  
D1CED7

**Deuteranopia**  
E2C9D4



**Tritanopia**  
E3C8D8

# Trichromacy



**Original Color**  
E2C9D4

**Protanomaly**  
D7CCD6

**Deuteranomaly**  
E2C9D4

**Tritanomaly**  
E3C8D7

# Monochromacy



**Original Color**  
E2C9D4

**Achromatopsia**  
D2D2D2

**Achromatomaly**  
D8CFD3

# CSS Examples

## Text

The CSS property to change the color of the text to Hex E2C9D4 is called "color". The color property can be set on classes, ids or directly on the HTML element.

This example shows how text in the color #E2C9D4 looks like.

```
.text, #text, p{  
    color:#E2C9D4  
}
```

If you want to add a text shadow in that color use the text-shadow property, you can generate a text shadow directly with our [CSS Text Shadow Generator](#).

Here you see how black text with a 4 pixel #E2C9D4 colored shadow looks like.

```
.shadow{ text-shadow: 4px 4px 2px #E2C9D4
}
```

## Border

The CSS property to change the border of an element to Hex E2C9D4 is called "border". The border property can be set on classes, ids or directly on the HTML element.

This example shows the color as border, it can be applied via the CSS property "border" or "border-color".

```
.border, #border, table{ border:4px solid
#E2C9D4 }
```

If only the border color should be changed use the property `border-color`.

```
.border{ border-color:#E2C9D4 }
```

If you want to add a box shadow in that color use:

Here you see how a box with a 4 pixel #E2C9D4 colored shadow looks like.

```
.boxshadow{ -moz-box-shadow:4px 4px 4px  
4px #E2C9D4; -webkit-box-shadow:4px 4px  
4px 4px #E2C9D4; box-shadow:4px 4px 4px  
4px #E2C9D4 }
```

# Background

The CSS property to change the background color of an element to Hex E2C9D4 is called "background". The background property can be set on classes, ids or directly on the HTML element.

```
.background, #background, body{  
background:#E2C9D4 }
```

If only the background color should be changed can be used:

```
.background{ background-color:#E2C9D4 }
```

This example shows the color as background, it is applied via the CSS property "background".

To optimize and compress your CSS code, you can use our [online CSS compressor and optimizer](#) based on csstidy. If you want to create a linear or radial gradient as background or border, check our [CSS Gradient Generator](#).



Hey! You found this booklet interesting? Support Converting Colors with the new Membership Option!

The pro membership hides all ads, plus gives you double the colors in the color bucket, and more awesome pro features!

**[Learn more, Memberships starting at \\$2.50/m!](#)**

**Follow me  
on Twitter!**

@ConvertingColor