

# Converting Colors

Hex(E2CAC3)

Have a look what the booklet for  
Hex(E2CAC3) contains.

<b>Hex(E2CAC3)</b> .....	3
<b><i>Conversions</i></b> .....	4
<b><i>Details</i></b> .....	6
<b><i>Harmonies</i></b> .....	11
<b><i>Previews</i></b> .....	23
<b><i>Color Blindness Simulation</i></b> .....	26
<b><i>CSS Examples</i></b> .....	29

# **Color**

**Hex(E2CAC3)**

# Conversions

## Conversions Part 1

Format	Color
Hex	E2CAC3
RGB	226, 202, 195
RGB Percent	89%, 79%, 76%
CMY	0.1137, 0.2078, 0.2353
CMYK	0.00, 0.11, 0.14, 0.11
HSL	14°, 35%, 83%
HSV	14°, 14%, 89%
XYZ	62.3349, 62.3499, 60.3791
YIQ	208.3780, 16.5510, 2.9110

# Conversions

## Conversions Part 2

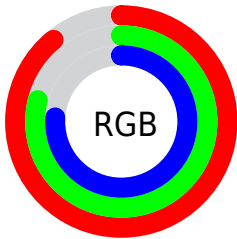
<b>Format</b>	<b>Color</b>
R <sub>Y</sub> B	226, 204, 195
Decimal	14863043
CIE Lab	83.10, 7.26, 6.55
CIE LCh	83, 9.776, 42.048
Yxy	62.3499, 0.3368, 0.3369
Android (android.graphics.Color)	4293053123 (0xFFE2CAC3)
YUV	208.3780, -6.5954, 15.4545
Hunter-Lab	78.9620, 2.7296, 9.9367

# Details

The Hex color **E2CAC3** is a light color, and the websafe version is hex **CCCCCC**. A complement of this color would be **C3DBE2**, and the grayscale version is **D0D0D0**.

A 20% lighter version of the original color is **FFFFFFC**, and **AA948D** is the 20% darker color. If you saturate the color by 10%, you get **E2B9AC**, and if you desaturate by 10%, it is **E2DBDA**.

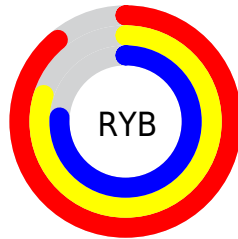
# Distribution



Red (89%)

Green (79%)

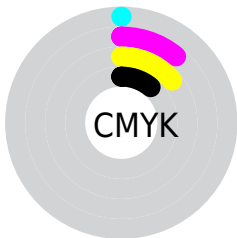
Blue (76%)



Red (89%)

Yellow (80%)

Blue (76%)

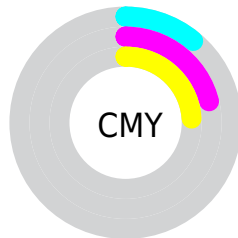


Cyan (0%)

Magenta (11%)

Yellow (14%)

Black (11%)



Cyan (11%)

Magenta (21%)

Yellow (24%)

# Brightness & Saturation Gradients

These gradients show how the Hex color E2CAC3 changes by changing the brightness by 10 percent. The first figure shows a shift by +10% for each color and the second figure -10%.

Similar to the brightness gradients but the following saturation gradients show a change of the Hex color E2CAC3 by changing the saturation by 10% instead.



 E2CAC3

 E2CAC3

FFFFFFF

 C6AFA8

FFFFFFC

 AA948D

 907A74

 76615B

 5D4A44

 45332E

 2E1E19

 1B0500

 000000

 E2CAC3

 E2CAC3

 E2B9AC

 E2DBDA

 E2A796

 E2EDF0

 E2967F

 E2FEFF

 E28469

 E2FFFF

 E27352

 E2613B

 E25025

 E23E0E

 E23300

# Harmonies

## Analogous

The Analogous color harmony consists of three colors that are next to each other on the color wheel.



E3C9CB



E2CAC3



DCCCBE

# Triad

The Triadic color harmony groups three colors that are evenly spaced from another and form a triangle on the color wheel.



E2CAC3



BFD4C9



CACEE1

# Complementary

The Complementary color scheme is a pair of colors which are on the opposite of each other on the color wheel.



E2CAC3



C3DBE2

# Split Complementary

Split-complementary colors differ from the complementary color scheme. The scheme consists of three colors, the original color and two neighbors of the complement color.



C0D1E0



E2CAC3



B9D5D2

# Square

The Square scheme is like the rectangle color scheme, but the four colors are evenly spaced on the color wheel.



E2CAC3



C8D2C1



B9D4DB



D5CBDD

# Rectangle

The Rectangle color scheme consists of four colors that form a rectangle on the color wheel.



E2CAC3



D6CEBD



B9D4DB



C6CFE1



# Sweetspot

The Sweet Spot groups the original color and five complimentary colors.



E2CAC3



FFF7F5



E2C3DB



807B79



000000



808080

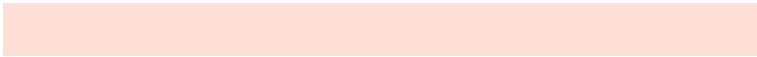


# Same Dimension

The Same Dimension uses a secret algorithm to generate beautiful new colors.



E2CAC3



FFDFD6



E2D9C3



706865



B02800



300B00

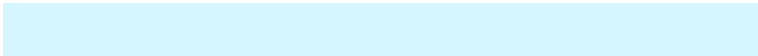


# Inverse Universe

The Inverse Universe completely reimagines the original color for something new.



C3DBE2



D6F6FF



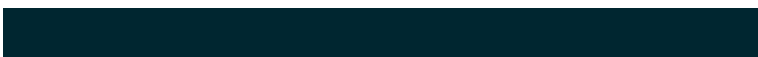
C3CCE2



656E70



0088B0

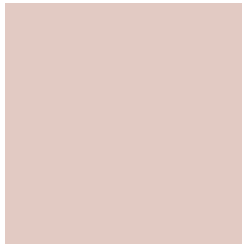


002630



# Previews

## White Background



This preview shows how the Hex color E2CAC3 looks on a white background.

## Color Contrast Check

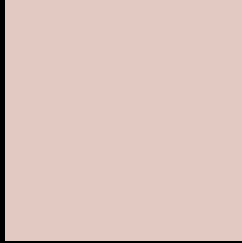
Large Text (above 18pt) WCAG AA × Fail

Any Text WCAG AA × Fail

Large Text (above 18pt) WCAG AAA × Fail

Any Text WCAG AAA × Fail

# Black Background



This preview shows how the Hex color E2CAC3 looks on a black background.

## Color Contrast Check

Large Text (above 18pt) WCAG AA ✓ Pass

Any Text WCAG AA ✓ Pass

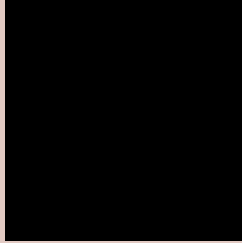
Large Text (above 18pt) WCAG AAA ✓ Pass

Any Text WCAG AAA ✓ Pass

If you want to check with other color combinations, try the [Color Contrast Checker](#).



## Hex E2CAC3 Background



This preview shows how black text looks on a background with the Hex color E2CAC3.

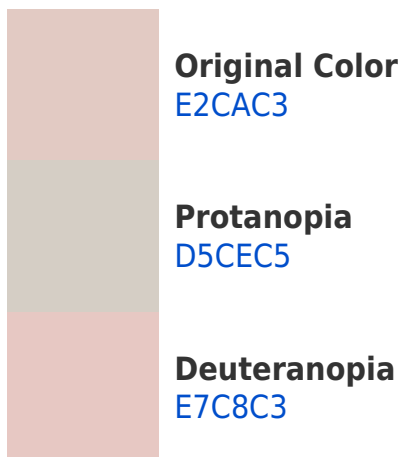


This preview shows how white text looks on a background with the Hex color E2CAC3.

# Color Blindness Simulation

Color vision deficiency is a very complex topic, and I could not describe the different causes any better than Wikipedia does, so if you want to learn more, you should check out their [article about color blindness](#).

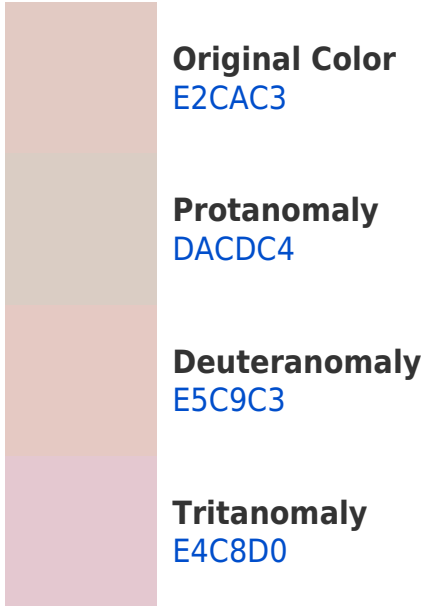
## Dichromacy



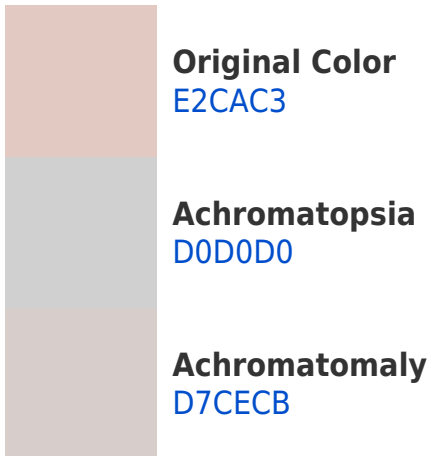


**Tritanopia**  
E5C7D7

# Trichromacy



# Monochromacy



# CSS Examples

## Text

The CSS property to change the color of the text to Hex E2CAC3 is called "color". The color property can be set on classes, ids or directly on the HTML element.

This example shows how text in the color #E2CAC3 looks like.

```
.text, #text, p{  
    color:#E2CAC3  
}
```

If you want to add a text shadow in that color use the text-shadow property, you can generate a text shadow directly with our [CSS Text Shadow Generator](#).

Here you see how black text with a 4 pixel #E2CAC3 colored shadow looks like.

```
.shadow{ text-shadow: 4px 4px 2px #E2CAC3  
}
```

## Border

The CSS property to change the border of an element to Hex E2CAC3 is called "border". The border property can be set on classes, ids or directly on the HTML element.

This example shows the color as border, it can be applied via the CSS property "border" or "border-color".

```
.border, #border, table{ border:4px solid  
#E2CAC3 }
```

If only the border color should be changed use the property `border-color`.

```
.border{ border-color:#E2CAC3 }
```

If you want to add a box shadow in that color use:

Here you see how a box with a 4 pixel #E2CAC3 colored shadow looks like.

```
.boxshadow{ -moz-box-shadow:4px 4px 4px  
4px #E2CAC3; -webkit-box-shadow:4px 4px  
4px 4px #E2CAC3; box-shadow:4px 4px 4px  
4px #E2CAC3 }
```

# Background

The CSS property to change the background color of an element to Hex E2CAC3 is called "background". The background property can be set on classes, ids or directly on the HTML element.

```
.background, #background, body{  
background:#E2CAC3 }
```

If only the background color should be changed can be used:

```
.background{ background-color:#E2CAC3 }
```

This example shows the color as background, it is applied via the CSS property "background".

To optimize and compress your CSS code, you can use our [online CSS compressor and optimizer](#) based on csstidy. If you want to create a linear or radial gradient as background or border, check our [CSS Gradient Generator](#).



Hey! You found this booklet interesting? Support Converting Colors with the new Membership Option!

The pro membership hides all ads, plus gives you double the colors in the color bucket, and more awesome pro features!

**[Learn more, Memberships starting at \\$2.50/m!](#)**

**Follow me  
on Twitter!**

@ConvertingColor