

# Converting Colors

Hex(E2CBC6)

Have a look what the booklet for  
Hex(E2CBC6) contains.

<b>Hex(E2CBC6)</b> .....	3
<i><b>Conversions</b></i> .....	4
<i><b>Details</b></i> .....	6
<i><b>Harmonies</b></i> .....	11
<i><b>Previews</b></i> .....	23
<i><b>Color Blindness Simulation</b></i> .....	26
<i><b>CSS Examples</b></i> .....	29

# **Color**

**Hex(E2CBC6)**

# Conversions

## Conversions Part 1

Format	Color
Hex	E2CBC6
RGB	226, 203, 198
RGB Percent	89%, 80%, 78%
CMY	0.1137, 0.2039, 0.2235
CMYK	0.00, 0.10, 0.12, 0.11
HSL	11°, 33%, 83%
HSV	11°, 12%, 89%
XYZ	62.9130, 62.9578, 62.2623
YIQ	209.3070, 15.3130, 3.3210

# Conversions

## Conversions Part 2

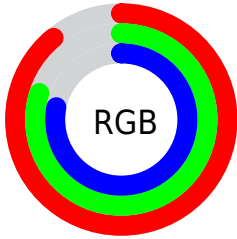
Format	Color
R <sub>Y</sub> B	226, 204, 198
Decimal	14863302
CIE Lab	83.42, 7.21, 5.41
CIE LCh	83, 9.018, 36.866
Yxy	62.9578, 0.3344, 0.3346
Android (android.graphics.Color)	4293053382 (0xFFE2CBC6)
YUV	209.3070, -5.5744, 14.6398
Hunter-Lab	79.3460, 2.6763, 9.0177

# Details

The Hex color **E2CBC6** is a light color, and the websafe version is hex **CCCCCC**. A complement of this color would be **C6DDE2**, and the grayscale version is **D1D1D1**.

A 20% lighter version of the original color is **FFFFFF**, and **AB9590** is the 20% darker color. If you saturate the color by 10%, you get **E2B8AF**, and if you desaturate by 10%, it is **E2DEDD**.

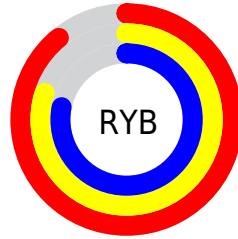
# Distribution



Red (89%)

Green (80%)

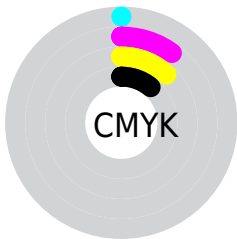
Blue (78%)



Red (89%)

Yellow (80%)

Blue (78%)

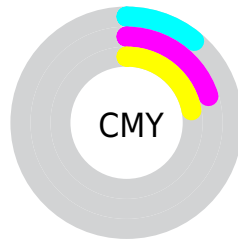


Cyan (0%)

Magenta (10%)

Yellow (12%)

Black (11%)



Cyan (11%)

Magenta (20%)

Yellow (22%)

# Brightness & Saturation Gradients

These gradients show how the Hex color E2CBC6 changes by changing the brightness by 10 percent. The first figure shows a shift by +10% for each color and the second figure -10%.

Similar to the brightness gradients but the following saturation gradients show a change of the Hex color E2CBC6 by changing the saturation by 10% instead.



 E2CBC6

FFFFFF

 E2CBC6

 C6B0AB

 AB9590

 907B77

 76625E

 5D4A46

 453430

 2F1F1B

 1C0600

 000000

 E2CBC6

 E2CBC6

 E2B8AF

 E2DEDD

 E2A699

 E2F0F3

 E29382

 E2FFFF

 E2816C

 E26E55

 E25C3E

 E24928

 E23611

 E22800

# Harmonies

## Analogous

The Analogous color harmony consists of three colors that are next to each other on the color wheel.



E2CACE



E2CBC6



DDCDC0

# Triad

The Triadic color harmony groups three colors that are evenly spaced from another and form a triangle on the color wheel.



E2CBC6



C2D4C9



CAD0E1

# Complementary

The Complementary color scheme is a pair of colors which are on the opposite of each other on the color wheel.



E2CBC6



C6DDE2

# Split Complementary

Split-complementary colors differ from the complementary color scheme. The scheme consists of three colors, the original color and two neighbors of the complement color.



C0D3DF



E2CBC6



BCD5D2

# Square

The Square scheme is like the rectangle color scheme, but the four colors are evenly spaced on the color wheel.



E2CBC6



CBD2C2



BBD4DA



D4CDDD

# Rectangle

The Rectangle color scheme consists of four colors that form a rectangle on the color wheel.



E2CBC6



D8CFBF



BBD4DA



C6D1E1



# Sweetspot

The Sweet Spot groups the original color and five complimentary colors.



E2CBC6



FFF7F5



E2C6DD



807A79



000000



808080

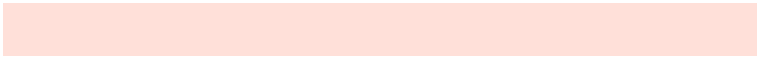


# Same Dimension

The Same Dimension uses a secret algorithm to generate beautiful new colors.



E2CBC6



FFE0D9



E2D9C6



706765



B01F00



300900

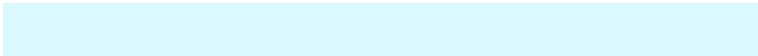


# Inverse Universe

The Inverse Universe completely reimagines the original color for something new.



C6DDE2



D9F8FF



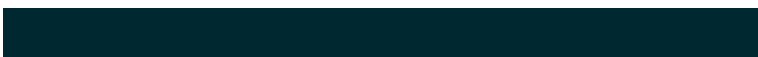
C6CFE2



656E70



0091B0

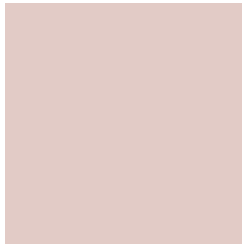


002830



# Previews

## White Background



This preview shows how the Hex color E2CBC6 looks on a white background.

## Color Contrast Check

Large Text (above 18pt) WCAG AA × Fail

Any Text WCAG AA × Fail

Large Text (above 18pt) WCAG AAA × Fail

Any Text WCAG AAA × Fail

# Black Background



This preview shows how the Hex color E2CBC6 looks on a black background.

## Color Contrast Check

Large Text (above 18pt) WCAG AA ✓ Pass

Any Text WCAG AA ✓ Pass

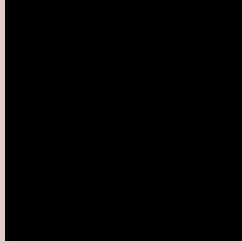
Large Text (above 18pt) WCAG AAA ✓ Pass

Any Text WCAG AAA ✓ Pass

If you want to check with other color combinations, try the [Color Contrast Checker](#).



## Hex E2CBC6 Background



This preview shows how black text looks on a background with the Hex color E2CBC6.

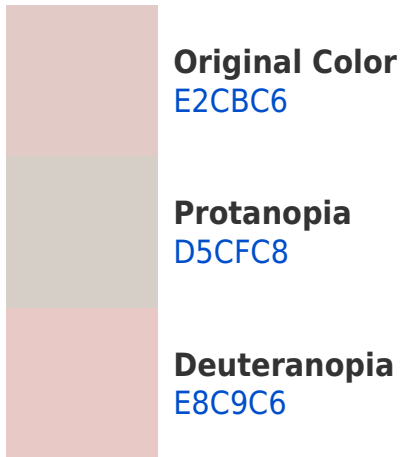


This preview shows how white text looks on a background with the Hex color E2CBC6.

# Color Blindness Simulation

Color vision deficiency is a very complex topic, and I could not describe the different causes any better than Wikipedia does, so if you want to learn more, you should check out their [article about color blindness](#).

## Dichromacy





**Tritanopia**  
E4C8D8

# Trichromacy



**Original Color**  
E2CBC6

**Protanomaly**  
DACEC7

**Deuteranomaly**  
E6CAC6

**Tritanomaly**  
E3C9D1

# Monochromacy



**Original Color**  
E2CBC6

**Achromatopsia**  
D1D1D1

**Achromatomaly**  
D7CFCD

# CSS Examples

## Text

The CSS property to change the color of the text to Hex E2CBC6 is called "color". The color property can be set on classes, ids or directly on the HTML element.

This example shows how text in the color #E2CBC6 looks like.

```
.text, #text, p{  
    color:#E2CBC6  
}
```

If you want to add a text shadow in that color use the text-shadow property, you can generate a text shadow directly with our [CSS Text Shadow Generator](#).

Here you see how black text with a 4 pixel #E2CBC6 colored shadow looks like.

```
.shadow{ text-shadow: 4px 4px 2px #E2CBC6
}
```

## Border

The CSS property to change the border of an element to Hex E2CBC6 is called "border". The border property can be set on classes, ids or directly on the HTML element.

This example shows the color as border, it can be applied via the CSS property "border" or "border-color".

```
.border, #border, table{ border:4px solid
#E2CBC6 }
```

If only the border color should be changed use the property `border-color`.

```
.border{ border-color:#E2CBC6 }
```

If you want to add a box shadow in that color use:

Here you see how a box with a 4 pixel #E2CBC6 colored shadow looks like.

```
.boxshadow{ -moz-box-shadow:4px 4px 4px  
4px #E2CBC6; -webkit-box-shadow:4px 4px  
4px 4px #E2CBC6; box-shadow:4px 4px 4px  
4px #E2CBC6 }
```

# Background

The CSS property to change the background color of an element to Hex E2CBC6 is called "background". The background property can be set on classes, ids or directly on the HTML element.

```
.background, #background, body{  
background:#E2CBC6 }
```

If only the background color should be changed can be used:

```
.background{ background-color:#E2CBC6 }
```

This example shows the color as background, it is applied via the CSS property "background".

To optimize and compress your CSS code, you can use our [online CSS compressor and optimizer](#) based on csstidy. If you want to create a linear or radial gradient as background or border, check our [CSS Gradient Generator](#).



Hey! You found this booklet interesting? Support Converting Colors with the new Membership Option!

The pro membership hides all ads, plus gives you double the colors in the color bucket, and more awesome pro features!

**[Learn more, Memberships starting at \\$2.50/m!](#)**

**Follow me  
on Twitter!**

@ConvertingColor