

# Converting Colors

Hex(E2CEC7)

Have a look what the booklet for  
Hex(E2CEC7) contains.

<b>Hex(E2CEC7)</b> .....	3
<b><i>Conversions</i></b> .....	4
<b><i>Details</i></b> .....	6
<b><i>Harmonies</i></b> .....	11
<b><i>Previews</i></b> .....	23
<b><i>Color Blindness Simulation</i></b> .....	26
<b><i>CSS Examples</i></b> .....	29

# **Color**

**Hex(E2CEC7)**

# Conversions

## Conversions Part 1

Format	Color
Hex	E2CEC7
RGB	226, 206, 199
RGB Percent	89%, 81%, 78%
CMY	0.1137, 0.1922, 0.2196
CMYK	0.00, 0.09, 0.12, 0.11
HSL	16°, 32%, 83%
HSV	16°, 12%, 89%
XYZ	63.7441, 64.4349, 63.1103
YIQ	211.1820, 14.1670, 2.0630

# Conversions

## Conversions Part 2

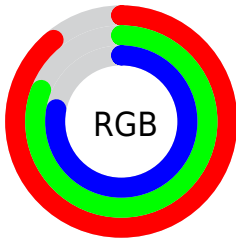
<b>Format</b>	<b>Color</b>
<b>R<sub>YB</sub></b>	226, 208, 199
Decimal	14864071
CIE <sub>Lab</sub>	84.19, 5.80, 5.99
CIE <sub>LCh</sub>	84, 8.338, 45.925
Yxy	64.4349, 0.3332, 0.3368
Android (android.graphics.Color)	4293054151 (0xFFE2CEC7)
YUV	211.1820, -6.0057, 12.9954
Hunter-Lab	80.2713, 1.2735, 9.5754

# Details

The Hex color **E2CEC7** is a light color, and the websafe version is hex **CCCCCC**. A complement of this color would be **C7DBE2**, and the grayscale version is **D3D3D3**.

A 20% lighter version of the original color is **FFFFFF**, and **AB9891** is the 20% darker color. If you saturate the color by 10%, you get **E2BDB0**, and if you desaturate by 10%, it is **E2DFDE**.

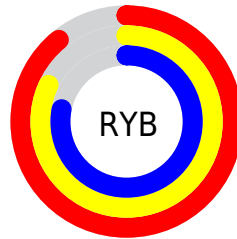
# Distribution



Red (89%)

Green (81%)

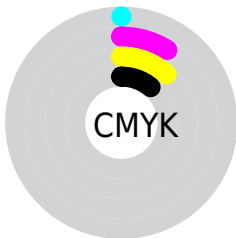
Blue (78%)



Red (89%)

Yellow (82%)

Blue (78%)

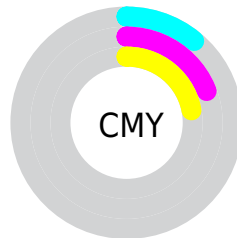


Cyan (0%)

Magenta (9%)

Yellow (12%)

Black (11%)



Cyan (11%)

Magenta (19%)

Yellow (22%)

# Brightness & Saturation Gradients

These gradients show how the Hex color E2CEC7 changes by changing the brightness by 10 percent. The first figure shows a shift by +10% for each color and the second figure -10%.

Similar to the brightness gradients but the following saturation gradients show a change of the Hex color E2CEC7 by changing the saturation by 10% instead.



 E2CEC7

FFFFFF

 E2CEC7

 C6B3AC

 AB9891

 907E78

 76655F

 5D4D47

 453631

 2F211C

 1C0A01

 000000

 E2CEC7

 E2CEC7

 E2BDB0

 E2DFDE

 E2AD9A

 E2EFF4

 E29C83

 E2FFFF

 E28B6D

 E27A56

 E26A3F

 E25929

 E24812

 E23B00

# Harmonies

## Analogous

The Analogous color harmony consists of three colors that are next to each other on the color wheel.



E3CDCE



E2CEC7



DCD0C3

# Triad

The Triadic color harmony groups three colors that are evenly spaced from another and form a triangle on the color wheel.



E2CEC7



C3D7CE



CFD1E1

# Complementary

The Complementary color scheme is a pair of colors which are on the opposite of each other on the color wheel.



E2CEC7



C7DBE2

# Split Complementary

Split-complementary colors differ from the complementary color scheme. The scheme consists of three colors, the original color and two neighbors of the complement color.



C6D4E1



E2CEC7



BFD7D6

# Square

The Square scheme is like the rectangle color scheme, but the four colors are evenly spaced on the color wheel.



E2CEC7



CBD5C7



C0D6DD



D9CFDD

# Rectangle

The Rectangle color scheme consists of four colors that form a rectangle on the color wheel.



E2CEC7



D7D2C2



C0D6DD



CCD2E1



# Sweetspot

The Sweet Spot groups the original color and five complimentary colors.



E2CEC7



FFF7F5



E2C7DB



807B79



000000



808080

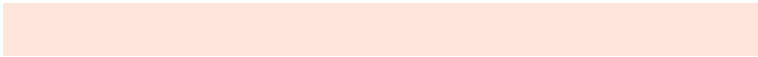


# Same Dimension

The Same Dimension uses a secret algorithm to generate beautiful new colors.



E2CEC7



FFE5DB



E2DBC7



706865



B02E00



300D00

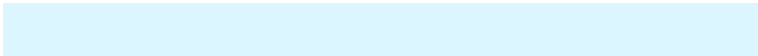


# Inverse Universe

The Inverse Universe completely reimagines the original color for something new.



C7DBE2



DBF6FF



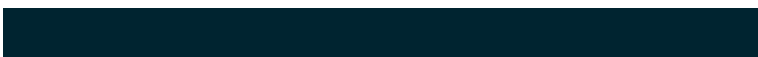
C7CEE2



656D70



0082B0

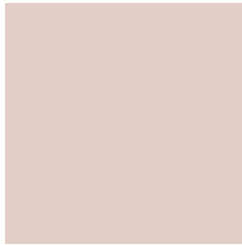


002430



# Previews

## White Background



This preview shows how the Hex color E2CEC7 looks on a white background.

## Color Contrast Check

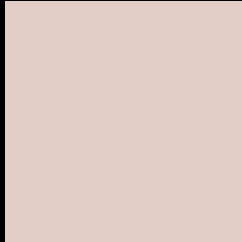
Large Text (above 18pt) WCAG AA × Fail

Any Text WCAG AA × Fail

Large Text (above 18pt) WCAG AAA × Fail

Any Text WCAG AAA × Fail

# Black Background



This preview shows how the Hex color E2CEC7 looks on a black background.

## Color Contrast Check

Large Text (above 18pt) WCAG AA ✓ Pass

Any Text WCAG AA ✓ Pass

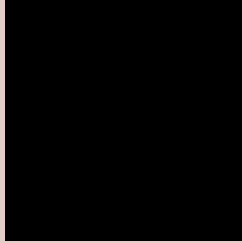
Large Text (above 18pt) WCAG AAA ✓ Pass

Any Text WCAG AAA ✓ Pass

If you want to check with other color combinations, try the [Color Contrast Checker](#).



## Hex E2CEC7 Background



This preview shows how black text looks on a background with the Hex color E2CEC7.

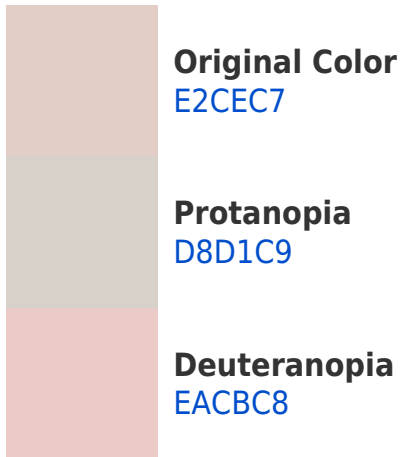


This preview shows how white text looks on a background with the Hex color E2CEC7.

# Color Blindness Simulation

Color vision deficiency is a very complex topic, and I could not describe the different causes any better than Wikipedia does, so if you want to learn more, you should check out their [article about color blindness](#).

## Dichromacy





**Tritanopia**  
E5CBDB

# Trichromacy



**Original Color**  
E2CEC7

**Protanomaly**  
DCD0C8

**Deuteranomaly**  
E7CCC8

**Tritanomaly**  
E4CCD4

# Monochromacy



**Original Color**  
E2CEC7

**Achromatopsia**  
D3D3D3

**Achromatomaly**  
D8D1CF

# CSS Examples

## Text

The CSS property to change the color of the text to Hex E2CEC7 is called "color". The color property can be set on classes, ids or directly on the HTML element.

This example shows how text in the color #E2CEC7 looks like.

```
.text, #text, p{  
    color:#E2CEC7  
}
```

If you want to add a text shadow in that color use the text-shadow property, you can generate a text shadow directly with our [CSS Text Shadow Generator](#).

Here you see how black text with a 4 pixel #E2CEC7 colored shadow looks like.

```
.shadow{ text-shadow: 4px 4px 2px #E2CEC7
}
```

## Border

The CSS property to change the border of an element to Hex E2CEC7 is called "border". The border property can be set on classes, ids or directly on the HTML element.

This example shows the color as border, it can be applied via the CSS property "border" or "border-color".

```
.border, #border, table{ border:4px solid
#E2CEC7 }
```

If only the border color should be changed use the property `border-color`.

```
.border{ border-color:#E2CEC7 }
```

If you want to add a box shadow in that color use:

Here you see how a box with a 4 pixel #E2CEC7 colored shadow looks like.

```
.boxshadow{ -moz-box-shadow:4px 4px 4px  
4px #E2CEC7; -webkit-box-shadow:4px 4px  
4px 4px #E2CEC7; box-shadow:4px 4px 4px  
4px #E2CEC7 }
```

# Background

The CSS property to change the background color of an element to Hex E2CEC7 is called "background". The background property can be set on classes, ids or directly on the HTML element.

```
.background, #background, body{  
background:#E2CEC7 }
```

If only the background color should be changed can be used:

```
.background{ background-color:#E2CEC7 }
```

This example shows the color as background, it is applied via the CSS property "background".

To optimize and compress your CSS code, you can use our [online CSS compressor and optimizer](#) based on csstidy. If you want to create a linear or radial gradient as background or border, check our [CSS Gradient Generator](#).



Hey! You found this booklet interesting? Support Converting Colors with the new Membership Option!

The pro membership hides all ads, plus gives you double the colors in the color bucket, and more awesome pro features!

**[Learn more, Memberships starting at \\$2.50/m!](#)**

**Follow me  
on Twitter!**

@ConvertingColor