

Converting Colors

Hex(E2CFD6)

Have a look what the booklet for
Hex(E2CFD6) contains.

Hex(E2CFD6)	3
<i>Conversions</i>	4
<i>Details</i>	6
<i>Harmonies</i>	11
<i>Previews</i>	23
<i>Color Blindness Simulation</i>	26
<i>CSS Examples</i>	29

Color

Hex(E2CFD6)

Conversions

Conversions Part 1

Format	Color
Hex	E2CFD6
RGB	226, 207, 214
RGB Percent	89%, 81%, 84%
CMY	0.1137, 0.1882, 0.1608
CMYK	0.00, 0.08, 0.05, 0.11
HSL	338°, 25%, 85%
HSV	338°, 8%, 89%
XYZ	65.8145, 65.6494, 72.8211
YIQ	213.4790, 9.0770, 6.2050

Conversions

Conversions Part 2

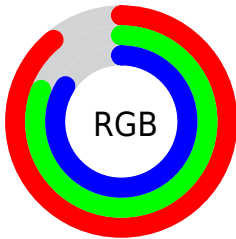
Format	Color
R _Y B	226, 207, 214
Decimal	14864342
CIE Lab	84.82, 7.79, -1.08
CIE LCh	85, 7.865, 352.111
Yxy	65.6494, 0.3222, 0.3214
Android (android.graphics.Color)	4293054422 (0xFFE2CFD6)
YUV	213.4790, 0.2569, 10.9809
Hunter-Lab	81.0243, 3.1994, 3.4298

Details

The Hex color **E2CFD6** is a light color, and the websafe version is hex **CCCCCC**. A complement of this color would be **CFE2DB**, and the grayscale version is **D5D5D5**.

A 20% lighter version of the original color is **FFFFFF**, and **AB999F** is the 20% darker color. If you saturate the color by 10%, you get **E2B8C8**, and if you desaturate by 10%, it is **E2E6E4**.

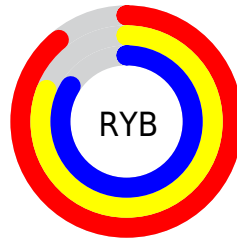
Distribution



Red (89%)

Green (81%)

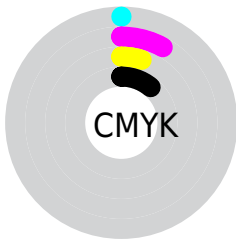
Blue (84%)



Red (89%)

Yellow (81%)

Blue (84%)

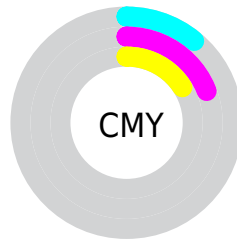


Cyan (0%)

Magenta (8%)

Yellow (5%)

Black (11%)



Cyan (11%)

Magenta (19%)

Yellow (16%)

Brightness & Saturation Gradients

These gradients show how the Hex color E2CFD6 changes by changing the brightness by 10 percent. The first figure shows a shift by +10% for each color and the second figure -10%.

Similar to the brightness gradients but the following saturation gradients show a change of the Hex color E2CFD6 by changing the saturation by 10% instead.

 E2CFD6

FFFFFF

 E2CFD6

 C6B3BA

 AB999F

 907F85

 76666C

 5E4E54

 46373D

 2F2127

 1B0C12

 000000

 E2CFD6

 E2CFD6

 E2B8C8

 E2E6E4

 E2A2B9

 E2FCF3

 E28BAB

 E2FFFF

 E2759D

 E25E8F

 E24780

 E23172

 E21A64

 E20456

Harmonies

Analogous

The Analogous color harmony consists of three colors that are next to each other on the color wheel.



DCD0DD



E2CFD6



E4CFCE

Triad

The Triadic color harmony groups three colors that are evenly spaced from another and form a triangle on the color wheel.



E2CFD6



D4D5C6



C4D7DF

Complementary

The Complementary color scheme is a pair of colors which are on the opposite of each other on the color wheel.



E2CFD6



CFE2DB

Split Complementary

Split-complementary colors differ from the complementary color scheme. The scheme consists of three colors, the original color and two neighbors of the complement color.



C2D8D9



E2CFD6



CBD7CA

Square

The Square scheme is like the rectangle color scheme, but the four colors are evenly spaced on the color wheel.



E2CFD6



DCD3C5



C5D8D1



CAD5E2

Rectangle

The Rectangle color scheme consists of four colors that form a rectangle on the color wheel.



E2CFD6



E3D0CA



C5D8D1



C3D8DD

Sweetspot

The Sweet Spot groups the original color and five complimentary colors.



E2CFD6



FFF7FA



DBCFE2



807A7C



000000



808080

Same Dimension

The Same Dimension uses a secret algorithm to generate beautiful new colors.



E2CFD6



FFE6EF



E2D1CF



706569



B00041



300012

Inverse Universe

The Inverse Universe completely reimagines the original color for something new.



E2CFD6



FFE6EF



CFE0E2



706569



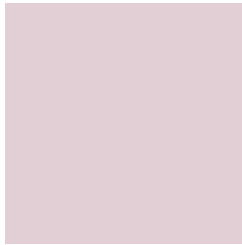
B00041



300012

Previews

White Background



This preview shows how the Hex color E2CFD6 looks on a white background.

Color Contrast Check

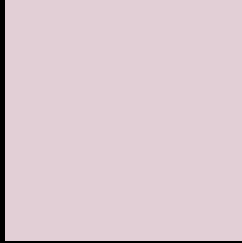
Large Text (above 18pt) WCAG AA × Fail

Any Text WCAG AA × Fail

Large Text (above 18pt) WCAG AAA × Fail

Any Text WCAG AAA × Fail

Black Background



This preview shows how the Hex color E2CFD6 looks on a black background.

Color Contrast Check

Large Text (above 18pt) WCAG AA ✓ Pass

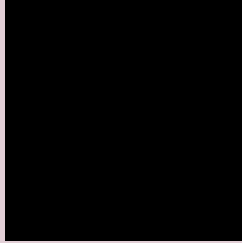
Any Text WCAG AA ✓ Pass

Large Text (above 18pt) WCAG AAA ✓ Pass

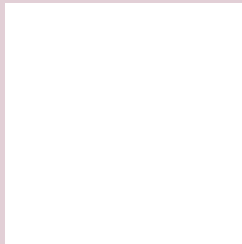
Any Text WCAG AAA ✓ Pass

If you want to check with other color combinations, try the [Color Contrast Checker](#).

Hex E2CFD6 Background



This preview shows how black text looks on a background with the Hex color E2CFD6.

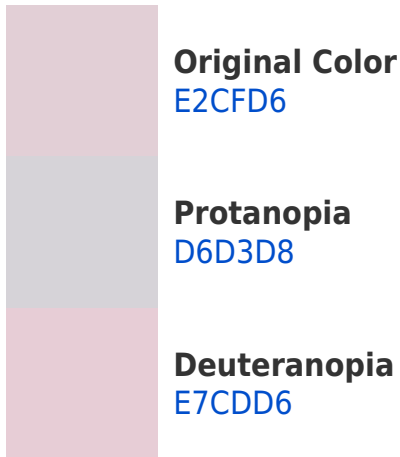


This preview shows how white text looks on a background with the Hex color E2CFD6.

Color Blindness Simulation

Color vision deficiency is a very complex topic, and I could not describe the different causes any better than Wikipedia does, so if you want to learn more, you should check out their [article about color blindness](#).

Dichromacy



Trichromacy



Original Color
E2CFD6

Protanomaly
DAD2D7

Deuteranomaly
E5CED6

Tritanomaly
E3CEDB

Monochromacy



Original Color
E2CFD6

Achromatopsia
D5D5D5

Achromatomaly
DAD3D5

CSS Examples

Text

The CSS property to change the color of the text to Hex E2CFD6 is called "color". The color property can be set on classes, ids or directly on the HTML element.

This example shows how text in the color #E2CFD6 looks like.

```
.text, #text, p{  
    color:#E2CFD6  
}
```

If you want to add a text shadow in that color use the text-shadow property, you can generate a text shadow directly with our [CSS Text Shadow Generator](#).

Here you see how black text with a 4 pixel #E2CFD6 colored shadow looks like.

```
.shadow{ text-shadow: 4px 4px 2px #E2CFD6
}
```

Border

The CSS property to change the border of an element to Hex E2CFD6 is called "border". The border property can be set on classes, ids or directly on the HTML element.

This example shows the color as border, it can be applied via the CSS property "border" or "border-color".

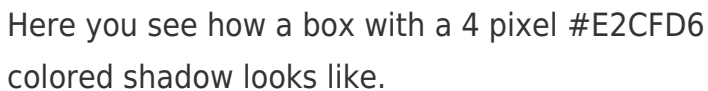
```
.border, #border, table{ border:4px solid
#E2CFD6 }
```

If only the border color should be changed use the property `border-color`.

```
.border{ border-color:#E2CFD6 }
```

If you want to add a box shadow in that color use:

Here you see how a box with a 4 pixel #E2CFD6 colored shadow looks like.



```
.boxshadow{ -moz-box-shadow:4px 4px 4px  
4px #E2CFD6; -webkit-box-shadow:4px 4px  
4px 4px #E2CFD6; box-shadow:4px 4px 4px  
4px #E2CFD6 }
```

Background

The CSS property to change the background color of an element to Hex E2CFD6 is called "background". The background property can be set on classes, ids or directly on the HTML element.

```
.background, #background, body{  
background:#E2CFD6 }
```

If only the background color should be changed can be used:

```
.background{ background-color:#E2CFD6 }
```

This example shows the color as background, it is applied via the CSS property "background".

To optimize and compress your CSS code, you can use our [online CSS compressor and optimizer](#) based on csstidy. If you want to create a linear or radial gradient as background or border, check our [CSS Gradient Generator](#).

Hey! You found this booklet interesting? Support Converting Colors with the new Membership Option!

The pro membership hides all ads, plus gives you double the colors in the color bucket, and more awesome pro features!

[Learn more, Memberships starting at \\$2.50/m!](#)

**Follow me
on Twitter!**

@ConvertingColor