

Converting Colors

Hex(E2D0DA)

Have a look what the booklet for
Hex(E2D0DA) contains.

Hex(E2D0DA)	3
<i>Conversions</i>	4
<i>Details</i>	6
<i>Harmonies</i>	11
<i>Previews</i>	23
<i>Color Blindness Simulation</i>	26
<i>CSS Examples</i>	29

Color

Hex(E2D0DA)

Conversions

Conversions Part 1

Format	Color
Hex	E2D0DA
RGB	226, 208, 218
RGB Percent	89%, 82%, 85%
CMY	0.1137, 0.1843, 0.1451
CMYK	0.00, 0.08, 0.04, 0.11
HSL	327°, 24%, 85%
HSV	327°, 8%, 89%
XYZ	66.5748, 66.3425, 75.6262
YIQ	214.5220, 7.5180, 6.9260

Conversions

Conversions Part 2

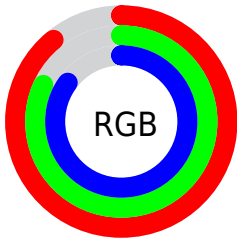
Format	Color
R _Y B	226, 208, 218
Decimal	14864602
CIE Lab	85.17, 7.96, -2.69
CIE LCh	85, 8.405, 341.353
Yxy	66.3425, 0.3192, 0.3181
Android (android.graphics.Color)	4293054682 (0xFFE2D0DA)
YUV	214.5220, 1.7147, 10.0662
Hunter-Lab	81.4509, 3.3600, 1.9656

Details

The Hex color **E2D0DA** is a light color, and the websafe version is hex **CCCCCC**. A complement of this color would be **D0E2D8**, and the grayscale version is **D6D6D6**.

A 20% lighter version of the original color is **FFFFFF**, and **AB9AA3** is the 20% darker color. If you saturate the color by 10%, you get **E2B9D0**, and if you desaturate by 10%, it is **E2E7E4**.

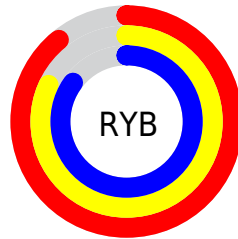
Distribution



Red (89%)

Green (82%)

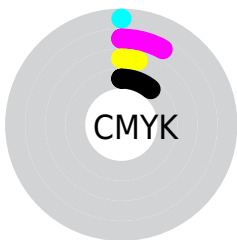
Blue (85%)



Red (89%)

Yellow (82%)

Blue (85%)

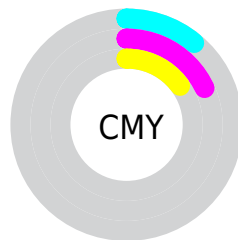


Cyan (0%)

Magenta (8%)

Yellow (4%)

Black (11%)



Cyan (11%)

Magenta (18%)

Yellow (15%)

Brightness & Saturation Gradients

These gradients show how the Hex color E2D0DA changes by changing the brightness by 10 percent. The first figure shows a shift by +10% for each color and the second figure -10%.

Similar to the brightness gradients but the following saturation gradients show a change of the Hex color E2D0DA by changing the saturation by 10% instead.

 E2D0DA

FFFFFF

 E2D0DA

 C6B4BE

 AB9AA3

 908089

 766770

 5E4F57

 463840

 30222A

 1B0D16

 000000

 E2D0DA

 E2D0DA

 E2B9D0

 E2E7E4

 E2A3C6

 E2FDEE

 E28CBC

 E2FFF8

 E276B2

 E2FFFF

 E25FA8

 E2489E

 E23294

 E21B8A

 E20580

Harmonies

Analogous

The Analogous color harmony consists of three colors that are next to each other on the color wheel.



DAD2E1



E2D0DA



E6CFD2

Triad

The Triadic color harmony groups three colors that are evenly spaced from another and form a triangle on the color wheel.



E2D0DA



D8D5C5



C2D9DF

Complementary

The Complementary color scheme is a pair of colors which are on the opposite of each other on the color wheel.



E2D0DA



D0E2D8

Split Complementary

Split-complementary colors differ from the complementary color scheme. The scheme consists of three colors, the original color and two neighbors of the complement color.



C2DAD8



E2D0DA



CFD8C9

Square

The Square scheme is like the rectangle color scheme, but the four colors are evenly spaced on the color wheel.



E2D0DA



E0D3C6



C7D9CF



C7D7E4

Rectangle

The Rectangle color scheme consists of four colors that form a rectangle on the color wheel.



E2D0DA



E6D0CD



C7D9CF



C2D9DD

Sweetspot

The Sweet Spot groups the original color and five complimentary colors.



E2D0DA



FFFAFD



D8D0E2



807D7E



000000



808080

Same Dimension

The Same Dimension uses a secret algorithm to generate beautiful new colors.



E2D0DA



FFE6F4



E2D0D1



70656B



B00062



30001B

Inverse Universe

The Inverse Universe completely reimagines the original color for something new.



E2D0DA



FFE6F4



D0E2E1



70656B



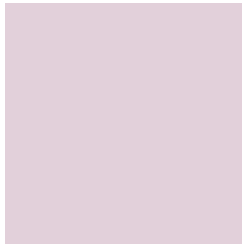
B00062



30001B

Previews

White Background



This preview shows how the Hex color E2D0DA looks on a white background.

Color Contrast Check

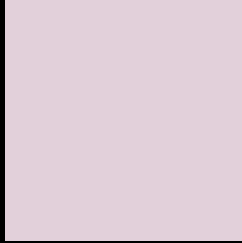
Large Text (above 18pt) WCAG AA × Fail

Any Text WCAG AA × Fail

Large Text (above 18pt) WCAG AAA × Fail

Any Text WCAG AAA × Fail

Black Background



This preview shows how the Hex color E2D0DA looks on a black background.

Color Contrast Check

Large Text (above 18pt) WCAG AA ✓ Pass

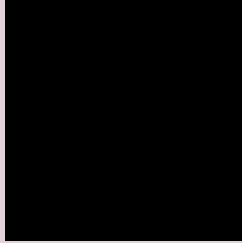
Any Text WCAG AA ✓ Pass

Large Text (above 18pt) WCAG AAA ✓ Pass

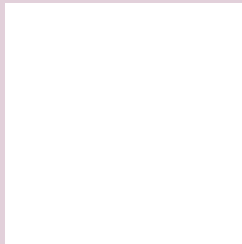
Any Text WCAG AAA ✓ Pass

If you want to check with other color combinations, try the [Color Contrast Checker](#).

Hex E2D0DA Background



This preview shows how black text looks on a background with the Hex color E2D0DA.

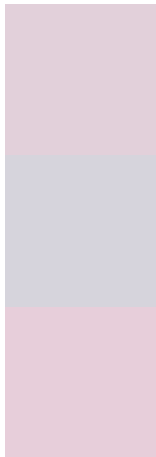


This preview shows how white text looks on a background with the Hex color E2D0DA.

Color Blindness Simulation

Color vision deficiency is a very complex topic, and I could not describe the different causes any better than Wikipedia does, so if you want to learn more, you should check out their [article about color blindness](#).

Dichromacy



Original Color
E2D0DA

Protanopia
D6D4DC

Deuteranopia
E7CEDA



Tritanopia
E3CFDF

Trichromacy



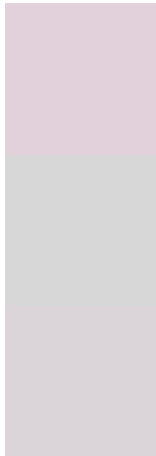
Original Color
E2D0DA

Protanomaly
DAD3DB

Deuteranomaly
E5CFDA

Tritanomaly
E3CFDD

Monochromacy



Original Color
E2D0DA

Achromatopsia
D7D7D7

Achromatomaly
DBD4D8

CSS Examples

Text

The CSS property to change the color of the text to Hex E2D0DA is called "color". The color property can be set on classes, ids or directly on the HTML element.

This example shows how text in the color #E2D0DA looks like.

```
.text, #text, p{  
    color:#E2D0DA  
}
```

If you want to add a text shadow in that color use the text-shadow property, you can generate a text shadow directly with our [CSS Text Shadow Generator](#).

Here you see how black text with a 4 pixel #E2D0DA colored shadow looks like.

```
.shadow{ text-shadow: 4px 4px 2px #E2D0DA
}
```

Border

The CSS property to change the border of an element to Hex E2D0DA is called "border". The border property can be set on classes, ids or directly on the HTML element.

This example shows the color as border, it can be applied via the CSS property "border" or "border-color".

```
.border, #border, table{ border:4px solid
#E2D0DA }
```

If only the border color should be changed use the property `border-color`.

```
.border{ border-color:#E2D0DA }
```

If you want to add a box shadow in that color use:

Here you see how a box with a 4 pixel #E2D0DA colored shadow looks like.

```
.boxshadow{ -moz-box-shadow:4px 4px 4px  
4px #E2D0DA; -webkit-box-shadow:4px 4px  
4px 4px #E2D0DA; box-shadow:4px 4px 4px  
4px #E2D0DA }
```

Background

The CSS property to change the background color of an element to Hex E2D0DA is called "background". The background property can be set on classes, ids or directly on the HTML element.

```
.background, #background, body{  
background:#E2D0DA }
```

If only the background color should be changed can be used:

```
.background{ background-color:#E2D0DA }
```

This example shows the color as background, it is applied via the CSS property "background".

To optimize and compress your CSS code, you can use our [online CSS compressor and optimizer](#) based on csstidy. If you want to create a linear or radial gradient as background or border, check our [CSS Gradient Generator](#).

Hey! You found this booklet interesting? Support Converting Colors with the new Membership Option!

The pro membership hides all ads, plus gives you double the colors in the color bucket, and more awesome pro features!

[Learn more, Memberships starting at \\$2.50/m!](#)

**Follow me
on Twitter!**

@ConvertingColor