

Converting Colors

Hex(E33166)

Have a look what the booklet for
Hex(E33166) contains.

Hex(E33166)	3
<i>Conversions</i>	4
<i>Details</i>	6
<i>Harmonies</i>	11
<i>Previews</i>	23
<i>Color Blindness Simulation</i>	26
<i>CSS Examples</i>	29

Color

Hex(E33166)

Conversions

Conversions Part 1

Format	Color
Hex	E33166
RGB	227, 49, 102
RGB Percent	89%, 19%, 40%
CMY	0.1098, 0.8078, 0.6000
CMYK	0.00, 0.78, 0.55, 0.11
HSL	342°, 76%, 54%
HSV	342°, 78%, 89%
XYZ	35.1751, 19.4868, 14.4778
YIQ	108.2640, 89.0750, 54.2190

Conversions

Conversions Part 2

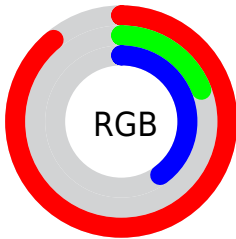
Format	Color
R_{YB}	227, 49, 102
Decimal	14889318
CIE _{Lab}	51.25, 69.10, 13.87
CIE _{LCh}	51, 70.478, 11.351
Yxy	19.4868, 0.5088, 0.2818
Android (android.graphics.Color)	4293079398 (0xFFE33166)
YUV	108.2640, -3.0882, 104.1315
Hunter-Lab	44.1439, 64.9822, 11.4555

Details

The Hex color **E33166** is a dark color, and the websafe version is hex **CC3366**. The color can be described as dark washed rose. A complement of this color would be **31E3AE**, and the grayscale version is **6C6C6C**.

A 20% lighter version of the original color is **FF7099**, and **A50038** is the 20% darker color. If you saturate the color by 10%, you get **E31A56**, and if you desaturate by 10%, it is **E34876**.

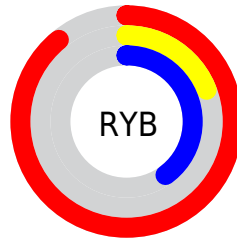
Distribution



Red (89%)

Green (19%)

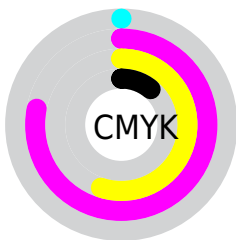
Blue (40%)



Red (89%)

Yellow (19%)

Blue (40%)

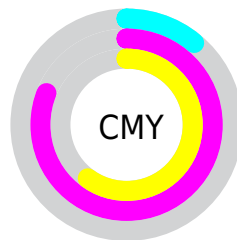


Cyan (0%)

Magenta (78%)

Yellow (55%)

Black (11%)



Cyan (11%)

Magenta (81%)

Yellow (60%)

Brightness & Saturation Gradients

These gradients show how the Hex color E33166 changes by changing the brightness by 10 percent. The first figure shows a shift by +10% for each color and the second figure -10%.

Similar to the brightness gradients but the following saturation gradients show a change of the Hex color E33166 by changing the saturation by 10% instead.

 E33166

 E33166

FFFFFF

 C4004E

 FF7099

 A50038

 FF8DB3

 860023

 FFABCF

 68000D

 FFC8EB

 4B0003

 FFE6FF

 2C0001

 000000

 E33166

 E33166

 E31A56

 E34876

 E30446

 E35E86

 E30044

 E37596

 E38CA6

 E3A3B6

 E3B9C6

 E3D0D6

 E3E7E6

 E3FDF5

Harmonies

Analogous

The Analogous color harmony consists of three colors that are next to each other on the color wheel.



D13DA2



E33166



D64B2C

Triad

The Triadic color harmony groups three colors that are evenly spaced from another and form a triangle on the color wheel.



E33166



378C08



008BED

Complementary

The Complementary color scheme is a pair of colors which are on the opposite of each other on the color wheel.



E33166



31E3AE

Split Complementary

Split-complementary colors differ from the complementary color scheme. The scheme consists of three colors, the original color and two neighbors of the complement color.



0093C9



E33166



009251

Square

The Square scheme is like the rectangle color scheme, but the four colors are evenly spaced on the color wheel.



E33166



7F7F00



009590



007AF1

Rectangle

The Rectangle color scheme consists of four colors that form a rectangle on the color wheel.



E33166



C06000



009590



008FE4

Sweetspot

The Sweet Spot groups the original color and five complimentary colors.



E33166



FFC2D4



AE31E3



805B66



000000



808080

Same Dimension

The Same Dimension uses a secret algorithm to generate beautiful new colors.



E33166



FF0F57



E35531



73676B



B30035



33000F

Inverse Universe

The Inverse Universe completely reimagines the original color for something new.



E33166



FF0F57



31BFE3



73676B



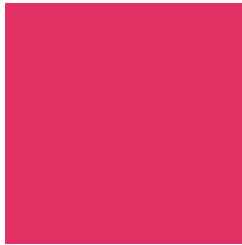
B30035



33000F

Previews

White Background



This preview shows how the Hex color E33166 looks on a white background.

Color Contrast Check

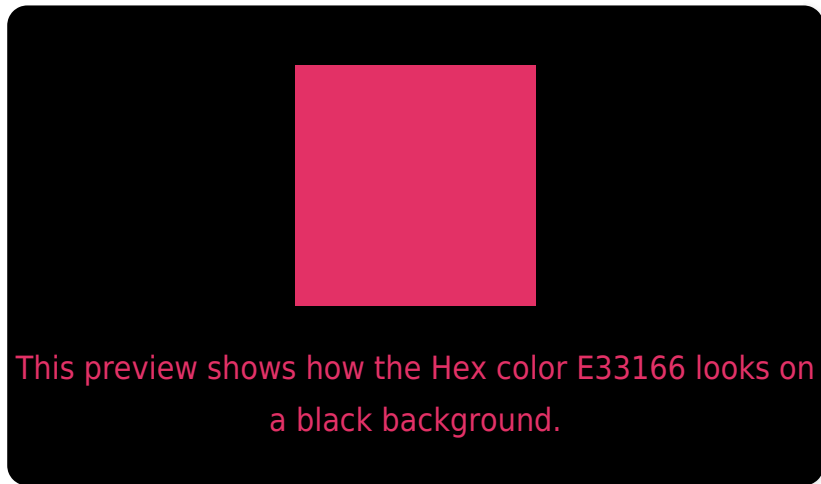
Large Text (above 18pt) WCAG AA ✓ Pass

Any Text WCAG AA × Fail

Large Text (above 18pt) WCAG AAA × Fail

Any Text WCAG AAA × Fail

Black Background



Color Contrast Check

Large Text (above 18pt) WCAG AA ✓ Pass

Any Text WCAG AA ✓ Pass

Large Text (above 18pt) WCAG AAA ✓ Pass

Any Text WCAG AAA × Fail

If you want to check with other color combinations, try the [Color Contrast Checker](#).

Hex E33166 Background



This preview shows how black text looks on a background with the Hex color E33166.

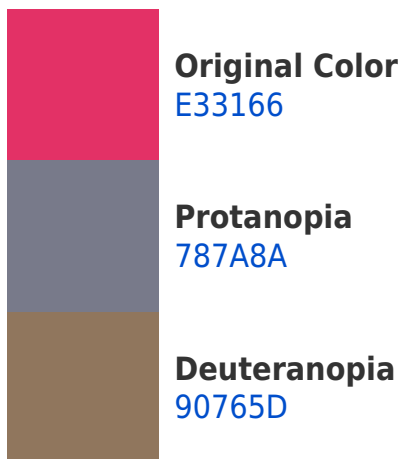


This preview shows how white text looks on a background with the Hex color E33166.

Color Blindness Simulation

Color vision deficiency is a very complex topic, and I could not describe the different causes any better than Wikipedia does, so if you want to learn more, you should check out their [article about color blindness](#).

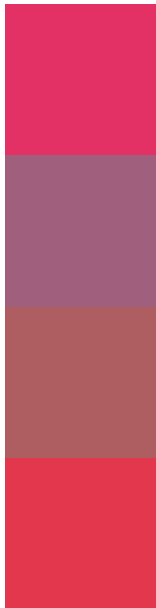
Dichromacy





Tritanopia
E13B3D

Trichromacy



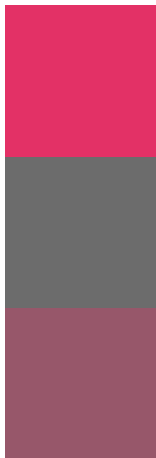
Original Color
E33166

Protanomaly
9F5F7D

Deuteranomaly
AE5D60

Tritanomaly
E2374C

Monochromacy



Original Color
E33166

Achromatopsia
6C6C6C

Achromatomaly
97576A

CSS Examples

Text

The CSS property to change the color of the text to Hex E33166 is called "color". The color property can be set on classes, ids or directly on the HTML element.

This example shows how text in the color #E33166 looks like.

```
.text, #text, p{  
    color:#E33166  
}
```

If you want to add a text shadow in that color use the text-shadow property, you can generate a text shadow directly with our [CSS Text Shadow Generator](#).

Here you see how black text with a 4 pixel #E33166 colored shadow looks like.

```
.shadow{ text-shadow: 4px 4px 2px #E33166
}
```

Border

The CSS property to change the border of an element to Hex E33166 is called "border". The border property can be set on classes, ids or directly on the HTML element.

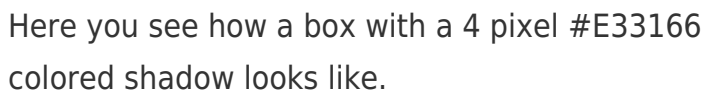
This example shows the color as border, it can be applied via the CSS property "border" or "border-color".

```
.border, #border, table{ border:4px solid
#E33166 }
```

If only the border color should be changed use the property `border-color`.

```
.border{ border-color:#E33166 }
```

If you want to add a box shadow in that color use:



Here you see how a box with a 4 pixel #E33166 colored shadow looks like.

```
.boxshadow{ -moz-box-shadow:4px 4px 4px  
4px #E33166; -webkit-box-shadow:4px 4px  
4px 4px #E33166; box-shadow:4px 4px 4px  
4px #E33166 }
```

Background

The CSS property to change the background color of an element to Hex E33166 is called "background". The background property can be set on classes, ids or directly on the HTML element.

```
.background, #background, body{  
background:#E33166 }
```

If only the background color should be changed can be used:

```
.background{ background-color:#E33166 }
```

This example shows the color as background, it is applied via the CSS property "background".

To optimize and compress your CSS code, you can use our [online CSS compressor and optimizer](#) based on csstidy. If you want to create a linear or radial gradient as background or border, check our [CSS Gradient Generator](#).

Hey! You found this booklet interesting? Support Converting Colors with the new Membership Option!

The pro membership hides all ads, plus gives you double the colors in the color bucket, and more awesome pro features!

[Learn more, Memberships starting at \\$2.50/m!](#)

**Follow me
on Twitter!**

@ConvertingColor