

Converting Colors

Hex(E33566)

Have a look what the booklet for
Hex(E33566) contains.

Hex(E33566)	3
<i>Conversions</i>	4
<i>Details</i>	6
<i>Harmonies</i>	11
<i>Previews</i>	23
<i>Color Blindness Simulation</i>	26
<i>CSS Examples</i>	29

Color

Hex(E33566)

Conversions

Conversions Part 1

Format	Color
Hex	E33566
RGB	227, 53, 102
RGB Percent	89%, 21%, 40%
CMY	0.1098, 0.7922, 0.6000
CMYK	0.00, 0.77, 0.55, 0.11
HSL	343°, 76%, 55%
HSV	343°, 77%, 89%
XYZ	35.3499, 19.8364, 14.5360
YIQ	110.6120, 87.9750, 52.1270

Conversions

Conversions Part 2

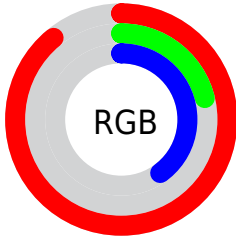
Format	Color
R_{YB}	227, 53, 102
Decimal	14890342
CIE _{Lab}	51.65, 67.97, 14.42
CIE _{LCh}	52, 69.484, 11.981
Yxy	19.8364, 0.5070, 0.2845
Android (android.graphics.Color)	4293080422 (0xFFE33566)
YUV	110.6120, -4.2457, 102.0723
Hunter-Lab	44.5381, 63.7340, 11.8260

Details

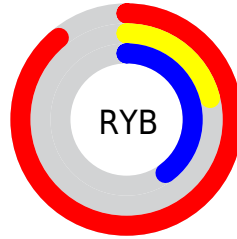
The Hex color **E33566** is a dark color, and the websafe version is hex **CC3366**. The color can be described as dark washed rose. A complement of this color would be **35E3B2**, and the grayscale version is **6F6F6F**.

A 20% lighter version of the original color is **FF7399**, and **A50038** is the 20% darker color. If you saturate the color by 10%, you get **E31E56**, and if you desaturate by 10%, it is **E34C76**.

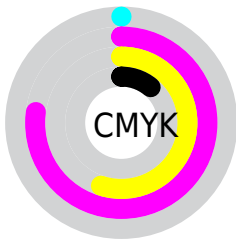
Distribution



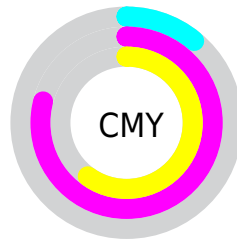
- Red (89%)
- Green (21%)
- Blue (40%)



- Red (89%)
- Yellow (21%)
- Blue (40%)



- Cyan (0%)
- Magenta (77%)
- Yellow (55%)
- Black (11%)



- Cyan (11%)
- Magenta (79%)
- Yellow (60%)

Brightness & Saturation Gradients

These gradients show how the Hex color E33566 changes by changing the brightness by 10 percent. The first figure shows a shift by +10% for each color and the second figure -10%.

Similar to the brightness gradients but the following saturation gradients show a change of the Hex color E33566 by changing the saturation by 10% instead.

 E33566

 E33566

FFFFFF

 C4014E

 FF7399

 A50038

 FF90B3

 860023

 FFADCF

 68000D

 FFCAEB

 4B0003

 FFE8FF

 2C0001

 000000

 E33566

 E33566

 E31E56

 E34C76

 E30845

 E36287

 E30040

 E37997

 E390A7

 E3A7B8

 E3BDC8

 E3D4D8

 E3EBE8

 E3FFF9

Harmonies

Analogous

The Analogous color harmony consists of three colors that are next to each other on the color wheel.



D23FA1



E33566



D54E2D

Triad

The Triadic color harmony groups three colors that are evenly spaced from another and form a triangle on the color wheel.



E33566



388D10



008CED

Complementary

The Complementary color scheme is a pair of colors which are on the opposite of each other on the color wheel.



E33566



35E3B2

Split Complementary

Split-complementary colors differ from the complementary color scheme. The scheme consists of three colors, the original color and two neighbors of the complement color.



0094CA



E33566



009354

Square

The Square scheme is like the rectangle color scheme, but the four colors are evenly spaced on the color wheel.



E33566



7F8000



009592



007BF1

Rectangle

The Rectangle color scheme consists of four colors that form a rectangle on the color wheel.



E33566



BF6200



009592



008FE4

Sweetspot

The Sweet Spot groups the original color and five complimentary colors.



E33566



FFC4D5



B235E3



805C66



000000



808080

Same Dimension

The Same Dimension uses a secret algorithm to generate beautiful new colors.



E33566



FF1456



E35B35



73676B



B30032



33000E

Inverse Universe

The Inverse Universe completely reimagines the original color for something new.



E33566



FF1456



35BDE3



73676B



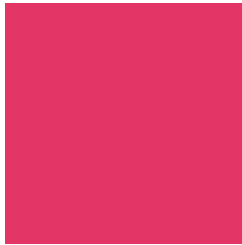
B30032



33000E

Previews

White Background



This preview shows how the Hex color E33566 looks on a white background.

Color Contrast Check

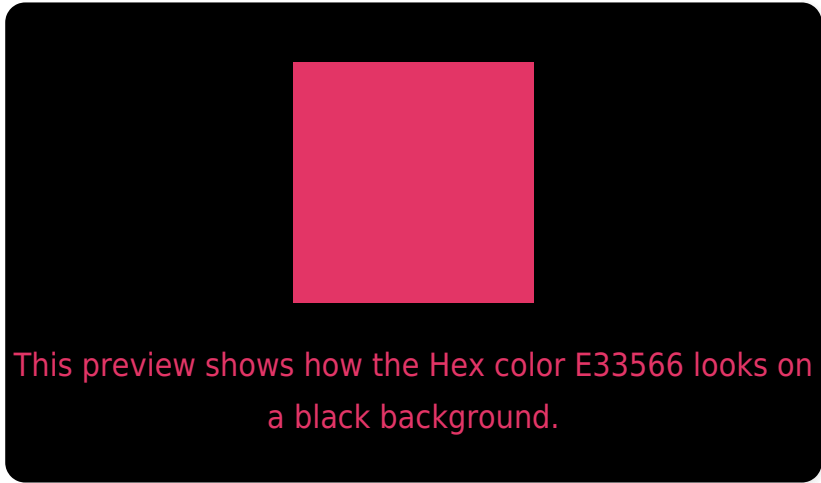
Large Text (above 18pt) WCAG AA ✓ Pass

Any Text WCAG AA × Fail

Large Text (above 18pt) WCAG AAA × Fail

Any Text WCAG AAA × Fail

Black Background



Color Contrast Check

Large Text (above 18pt) WCAG AA ✓ Pass

Any Text WCAG AA ✓ Pass

Large Text (above 18pt) WCAG AAA ✓ Pass

Any Text WCAG AAA × Fail

If you want to check with other color combinations, try the [Color Contrast Checker](#).

Hex E33566 Background



This preview shows how black text looks on a background with the Hex color E33566.

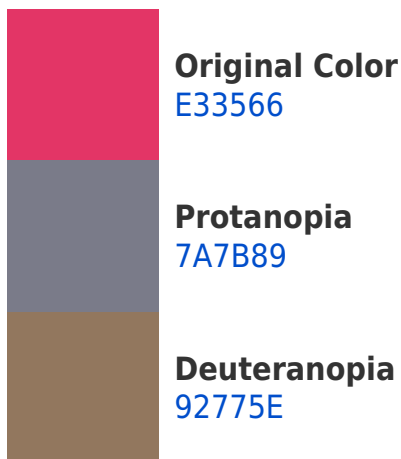


This preview shows how white text looks on a background with the Hex color E33566.

Color Blindness Simulation

Color vision deficiency is a very complex topic, and I could not describe the different causes any better than Wikipedia does, so if you want to learn more, you should check out their [article about color blindness](#).

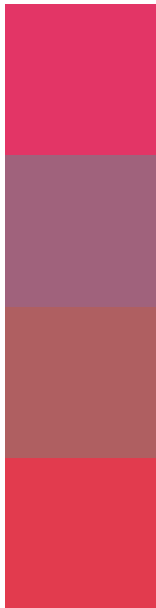
Dichromacy





Tritanopia
E13E40

Trichromacy



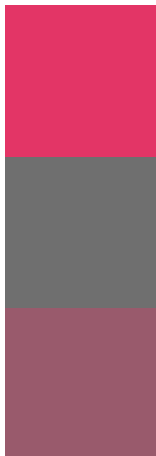
Original Color
E33566

Protanomaly
A0627C

Deuteranomaly
AF5F61

Tritanomaly
E23B4E

Monochromacy



Original Color
E33566

Achromatopsia
6F6F6F

Achromatomaly
995A6C

CSS Examples

Text

The CSS property to change the color of the text to Hex E33566 is called "color". The color property can be set on classes, ids or directly on the HTML element.

This example shows how text in the color #E33566 looks like.

```
.text, #text, p{  
    color:#E33566  
}
```

If you want to add a text shadow in that color use the text-shadow property, you can generate a text shadow directly with our [CSS Text Shadow Generator](#).

Here you see how black text with a 4 pixel #E33566 colored shadow looks like.

```
.shadow{ text-shadow: 4px 4px 2px #E33566
}
```

Border

The CSS property to change the border of an element to Hex E33566 is called "border". The border property can be set on classes, ids or directly on the HTML element.

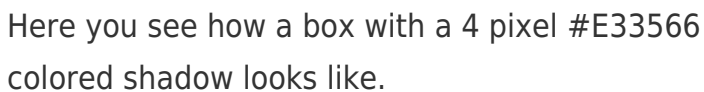
This example shows the color as border, it can be applied via the CSS property "border" or "border-color".

```
.border, #border, table{ border:4px solid
#E33566 }
```

If only the border color should be changed use the property `border-color`.

```
.border{ border-color:#E33566 }
```

If you want to add a box shadow in that color use:



Here you see how a box with a 4 pixel #E33566 colored shadow looks like.

```
.boxshadow{ -moz-box-shadow:4px 4px 4px  
4px #E33566; -webkit-box-shadow:4px 4px  
4px 4px #E33566; box-shadow:4px 4px 4px  
4px #E33566 }
```

Background

The CSS property to change the background color of an element to Hex E33566 is called "background". The background property can be set on classes, ids or directly on the HTML element.

```
.background, #background, body{  
background:#E33566 }
```

If only the background color should be changed can be used:

```
.background{ background-color:#E33566 }
```

This example shows the color as background, it is applied via the CSS property "background".

To optimize and compress your CSS code, you can use our [online CSS compressor and optimizer](#) based on csstidy. If you want to create a linear or radial gradient as background or border, check our [CSS Gradient Generator](#).

Hey! You found this booklet interesting? Support Converting Colors with the new Membership Option!

The pro membership hides all ads, plus gives you double the colors in the color bucket, and more awesome pro features!

[Learn more, Memberships starting at \\$2.50/m!](#)

**Follow me
on Twitter!**

@ConvertingColor