

Converting Colors

Hex(E34478)

Have a look what the booklet for
Hex(E34478) contains.

| | |
|--|----|
| Hex(E34478) | 3 |
| <i>Conversions</i> | 4 |
| <i>Details</i> | 6 |
| <i>Harmonies</i> | 11 |
| <i>Previews</i> | 23 |
| <i>Color Blindness Simulation</i> | 26 |
| <i>CSS Examples</i> | 29 |

Color

Hex(E34478)

Conversions

Conversions Part 1

| Format | Color |
|---------------|----------------------------|
| Hex | E34478 |
| RGB | 227, 68, 120 |
| RGB Percent | 89%, 27%, 47% |
| CMY | 0.1098, 0.7333, 0.5294 |
| CMYK | 0.00, 0.70, 0.47, 0.11 |
| HSL | 340°, 74%, 58% |
| HSV | 340°, 70%, 89% |
| XYZ | 37.1358, 21.8212, 20.0239 |
| YIQ | 121.4690, 78.0720, 49.8800 |

Conversions

Conversions Part 2

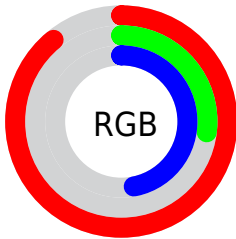
| Format | Color |
|-------------------------------------|-------------------------------|
| R_{YB} | 227, 68, 120 |
| Decimal | 14894200 |
| CIE _{Lab} | 53.84, 64.51, 6.67 |
| CIE _{LCh} | 54, 64.852, 5.906 |
| Yxy | 21.8212, 0.4702, 0.2763 |
| Android (android.graphics.Color) | 4293084280 (0xFFE34478) |
| YUV | 121.4690, -0.7242, 92.5507 |
| Hunter-Lab | 46.7132, 60.1551, 7.2841 |

Details

The Hex color **E34478** is a dark color, and the websafe version is hex **CC3366**. The color can be described as middle muted rose. A complement of this color would be **44E3AF**, and the grayscale version is **797979**.

A 20% lighter version of the original color is **FF7FAC**, and **A60048** is the 20% darker color. If you saturate the color by 10%, you get **E32D69**, and if you desaturate by 10%, it is **E35B87**.

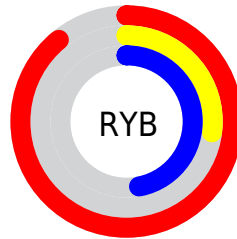
Distribution



Red (89%)

Green (27%)

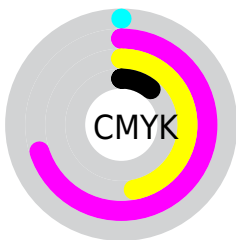
Blue (47%)



Red (89%)

Yellow (27%)

Blue (47%)

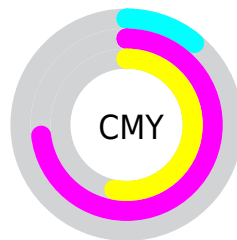


Cyan (0%)

Magenta (70%)

Yellow (47%)

Black (11%)



Cyan (11%)

Magenta (73%)

Yellow (53%)

Brightness & Saturation Gradients

These gradients show how the Hex color E34478 changes by changing the brightness by 10 percent. The first figure shows a shift by +10% for each color and the second figure -10%.

Similar to the brightness gradients but the following saturation gradients show a change of the Hex color E34478 by changing the saturation by 10% instead.

 E34478

 E34478

FFFFFF

 C4215F

 FF7FAC

 A60048

 FF9BC7

 880032

 FFB8E3

 6A001D

 FFD5FF

 4E0002

 FFF3FF

 300002

 000000

 E34478

 E34478

 E32D69

 E35B87

 E31759

 E37197

 E3004A

 E388A6

 E39FB5

 E3B5C4

 E3CCD4

 E3E3E3

 E3FAF2

 E3FFFF

Harmonies

Analogous

The Analogous color harmony consists of three colors that are next to each other on the color wheel.



CC51AF



E34478



DC5342

Triad

The Triadic color harmony groups three colors that are evenly spaced from another and form a triangle on the color wheel.



E34478



559016



0092E7

Complementary

The Complementary color scheme is a pair of colors which are on the opposite of each other on the color wheel.



E34478



44E3AF

Split Complementary

Split-complementary colors differ from the complementary color scheme. The scheme consists of three colors, the original color and two neighbors of the complement color.



0099C1



E34478



009750

Square

The Square scheme is like the rectangle color scheme, but the four colors are evenly spaced on the color wheel.



E34478



918200



009A8B



0084F1

Rectangle

The Rectangle color scheme consists of four colors that form a rectangle on the color wheel.



E34478



CA6420



009A8B



0095DD

Sweetspot

The Sweet Spot groups the original color and five complimentary colors.



E34478



FFC9DB



AE44E3



80606A



000000



808080

Same Dimension

The Same Dimension uses a secret algorithm to generate beautiful new colors.



E34478



FF296F



E35F44



73676B



B3003A



330011

Inverse Universe

The Inverse Universe completely reimagines the original color for something new.



E34478



FF296F



44C8E3



73676B



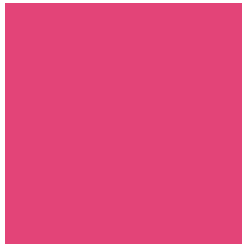
B3003A



330011

Previews

White Background



This preview shows how the Hex color E34478 looks on a white background.

Color Contrast Check

Large Text (above 18pt) WCAG AA ✓ Pass

Any Text WCAG AA × Fail

Large Text (above 18pt) WCAG AAA × Fail

Any Text WCAG AAA × Fail

Black Background



Color Contrast Check

Large Text (above 18pt) WCAG AA ✓ Pass

Any Text WCAG AA ✓ Pass

Large Text (above 18pt) WCAG AAA ✓ Pass

Any Text WCAG AAA × Fail

If you want to check with other color combinations, try the [Color Contrast Checker](#).

Hex E34478 Background



This preview shows how black text looks on a background with the Hex color E34478.

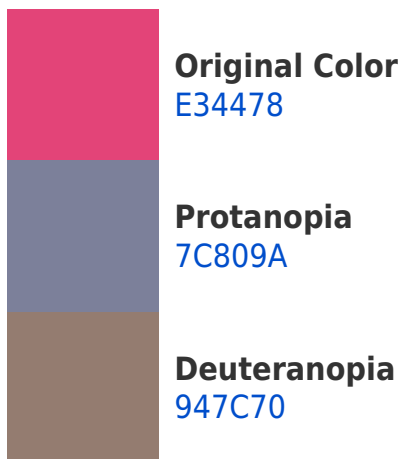


This preview shows how white text looks on a background with the Hex color E34478.

Color Blindness Simulation

Color vision deficiency is a very complex topic, and I could not describe the different causes any better than Wikipedia does, so if you want to learn more, you should check out their [article about color blindness](#).

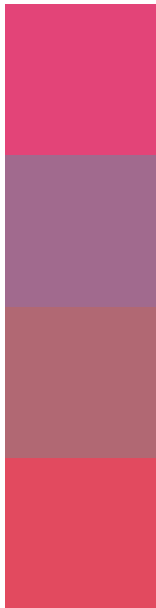
Dichromacy





Tritanopia
E14D51

Trichromacy



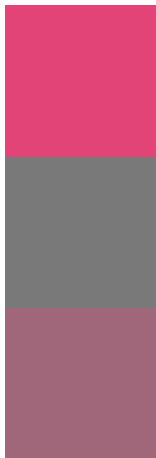
Original Color
E34478

Protanomaly
A16A8E

Deuteranomaly
B16873

Tritanomaly
E24A5F

Monochromacy



Original Color
E34478

Achromatopsia
797979

Achromatomaly
A06679

CSS Examples

Text

The CSS property to change the color of the text to Hex E34478 is called "color". The color property can be set on classes, ids or directly on the HTML element.

This example shows how text in the color #E34478 looks like.

```
.text, #text, p{  
    color:#E34478  
}
```

If you want to add a text shadow in that color use the text-shadow property, you can generate a text shadow directly with our [CSS Text Shadow Generator](#).

Here you see how black text with a 4 pixel #E34478 colored shadow looks like.

```
.shadow{ text-shadow: 4px 4px 2px #E34478
}
```

Border

The CSS property to change the border of an element to Hex E34478 is called "border". The border property can be set on classes, ids or directly on the HTML element.

This example shows the color as border, it can be applied via the CSS property "border" or "border-color".

```
.border, #border, table{ border:4px solid
#E34478 }
```

If only the border color should be changed use the property `border-color`.

```
.border{ border-color:#E34478 }
```

If you want to add a box shadow in that color use:

Here you see how a box with a 4 pixel #E34478 colored shadow looks like.

```
.boxshadow{ -moz-box-shadow:4px 4px 4px  
4px #E34478; -webkit-box-shadow:4px 4px  
4px 4px #E34478; box-shadow:4px 4px 4px  
4px #E34478 }
```

Background

The CSS property to change the background color of an element to Hex E34478 is called "background". The background property can be set on classes, ids or directly on the HTML element.

```
.background, #background, body{  
background:#E34478 }
```

If only the background color should be changed can be used:

```
.background{ background-color:#E34478 }
```

This example shows the color as background, it is applied via the CSS property "background".

To optimize and compress your CSS code, you can use our [online CSS compressor and optimizer](#) based on csstidy. If you want to create a linear or radial gradient as background or border, check our [CSS Gradient Generator](#).

Hey! You found this booklet interesting? Support Converting Colors with the new Membership Option!

The pro membership hides all ads, plus gives you double the colors in the color bucket, and more awesome pro features!

[Learn more, Memberships starting at \\$2.50/m!](#)

**Follow me
on Twitter!**

@ConvertingColor