

Converting Colors

Hex(E34480)

Have a look what the booklet for
Hex(E34480) contains.

Hex(E34480)	3
<i>Conversions</i>	4
<i>Details</i>	6
<i>Harmonies</i>	11
<i>Previews</i>	23
<i>Color Blindness Simulation</i>	26
<i>CSS Examples</i>	29

Color

Hex(E34480)

Conversions

Conversions Part 1

Format	Color
Hex	E34480
RGB	227, 68, 128
RGB Percent	89%, 27%, 50%
CMY	0.1098, 0.7333, 0.4980
CMYK	0.00, 0.70, 0.44, 0.11
HSL	337°, 74%, 58%
HSV	337°, 70%, 89%
XYZ	37.6420, 22.0237, 22.6891
YIQ	122.3810, 75.5040, 52.3680

Conversions

Conversions Part 2

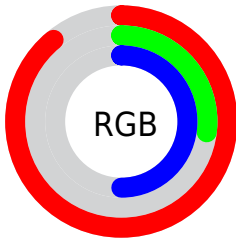
Format	Color
R_{YB}	227, 68, 128
Decimal	14894208
CIE _{Lab}	54.05, 65.23, 2.21
CIE _{LCh}	54, 65.271, 1.938
Yxy	22.0237, 0.4571, 0.2674
Android (android.graphics.Color)	4293084288 (0xFFE34480)
YUV	122.3810, 2.7702, 91.7509
Hunter-Lab	46.9294, 61.0481, 4.1854

Details

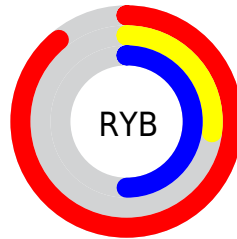
The Hex color **E34480** is a dark color, and the websafe version is hex **CC3366**. The color can be described as middle muted rose. A complement of this color would be **44E3A7**, and the grayscale version is **7A7A7A**.

A 20% lighter version of the original color is **FF7FB5**, and **A6004F** is the 20% darker color. If you saturate the color by 10%, you get **E32D72**, and if you desaturate by 10%, it is **E35B8E**.

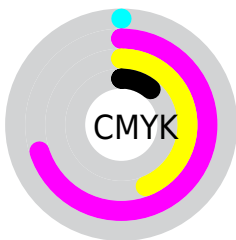
Distribution



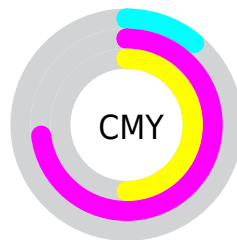
- Red (89%)
- Green (27%)
- Blue (50%)



- Red (89%)
- Yellow (27%)
- Blue (50%)



- Cyan (0%)
- Magenta (70%)
- Yellow (44%)
- Black (11%)



- Cyan (11%)
- Magenta (73%)
- Yellow (50%)

Brightness & Saturation Gradients

These gradients show how the Hex color E34480 changes by changing the brightness by 10 percent. The first figure shows a shift by +10% for each color and the second figure -10%.

Similar to the brightness gradients but the following saturation gradients show a change of the Hex color E34480 by changing the saturation by 10% instead.

 E34480

 E34480

FFFFFF

 C42167

 FF7FB5

 A6004F

 FF9BD0

 880039

 FFB8EC

 6B0023

 FFD6FF

 4F000D

 FFF3FF

 320002

 000000

 E34480

 E34480

 E32D72

 E35B8E

 E31764

 E3719C

 E30056

 E388AA

 E39FB9

 E3B5C7

 E3CCD5

 E3E3E3

 E3FAF1

 E3FFFF

Harmonies

Analogous

The Analogous color harmony consists of three colors that are next to each other on the color wheel.



C755B7



E34480



E05049

Triad

The Triadic color harmony groups three colors that are evenly spaced from another and form a triangle on the color wheel.



E34480



5F8F0B



0094E5

Complementary

The Complementary color scheme is a pair of colors which are on the opposite of each other on the color wheel.



E34480



44E3A7

Split Complementary

Split-complementary colors differ from the complementary color scheme. The scheme consists of three colors, the original color and two neighbors of the complement color.



009ABC



E34480



009749

Square

The Square scheme is like the rectangle color scheme, but the four colors are evenly spaced on the color wheel.



E34480



988000



009B83



0087F3

Rectangle

The Rectangle color scheme consists of four colors that form a rectangle on the color wheel.



E34480



CF6127



009B83



0097D9

Sweetspot

The Sweet Spot groups the original color and five complimentary colors.



E34480



FFC9DE



A644E3



80606C



000000



808080

Same Dimension

The Same Dimension uses a secret algorithm to generate beautiful new colors.



E34480



FF297A



E35744



73676C



B30043



330013

Inverse Universe

The Inverse Universe completely reimagines the original color for something new.



E34480



FF297A



44D0E3



73676C



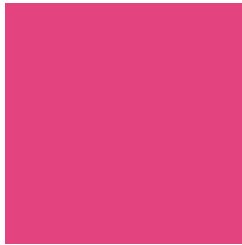
B30043



330013

Previews

White Background



This preview shows how the Hex color E34480 looks on a white background.

Color Contrast Check

Large Text (above 18pt) WCAG AA ✓ Pass

Any Text WCAG AA ✗ Fail

Large Text (above 18pt) WCAG AAA ✗ Fail

Any Text WCAG AAA ✗ Fail

Black Background



Color Contrast Check

Large Text (above 18pt) WCAG AA ✓ Pass

Any Text WCAG AA ✓ Pass

Large Text (above 18pt) WCAG AAA ✓ Pass

Any Text WCAG AAA × Fail

If you want to check with other color combinations, try the [Color Contrast Checker](#).

Hex E34480 Background



This preview shows how black text looks on a background with the Hex color E34480.

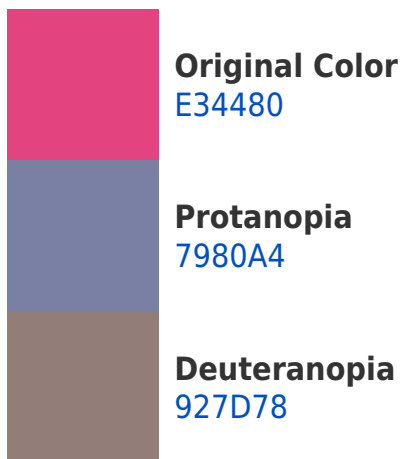


This preview shows how white text looks on a background with the Hex color E34480.

Color Blindness Simulation

Color vision deficiency is a very complex topic, and I could not describe the different causes any better than Wikipedia does, so if you want to learn more, you should check out their [article about color blindness](#).

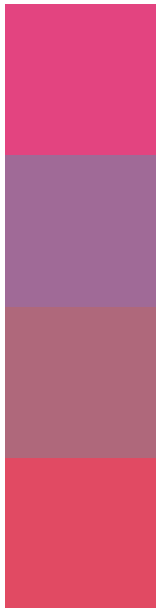
Dichromacy





Tritanopia
E04E53

Trichromacy



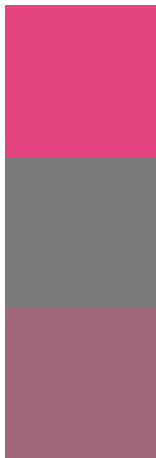
Original Color
E34480

Protanomaly
A06A97

Deuteranomaly
AF687B

Tritanomaly
E14A63

Monochromacy



Original Color
E34480

Achromatopsia
7A7A7A

Achromatomaly
A0667C

CSS Examples

Text

The CSS property to change the color of the text to Hex E34480 is called "color". The color property can be set on classes, ids or directly on the HTML element.

This example shows how text in the color #E34480 looks like.

```
.text, #text, p{  
  color:#E34480  
}
```

If you want to add a text shadow in that color use the text-shadow property, you can generate a text shadow directly with our [CSS Text Shadow Generator](#).

Here you see how black text with a 4 pixel #E34480 colored shadow looks like.

```
.shadow{ text-shadow: 4px 4px 2px #E34480
}
```

Border

The CSS property to change the border of an element to Hex E34480 is called "border". The border property can be set on classes, ids or directly on the HTML element.

This example shows the color as border, it can be applied via the CSS property "border" or "border-color".

```
.border, #border, table{ border:4px solid
#E34480 }
```

If only the border color should be changed use the property `border-color`.

```
.border{ border-color:#E34480 }
```

If you want to add a box shadow in that color use:

Here you see how a box with a 4 pixel #E34480 colored shadow looks like.

```
.boxshadow{ -moz-box-shadow:4px 4px 4px  
4px #E34480; -webkit-box-shadow:4px 4px  
4px 4px #E34480; box-shadow:4px 4px 4px  
4px #E34480 }
```

Background

The CSS property to change the background color of an element to Hex E34480 is called "background". The background property can be set on classes, ids or directly on the HTML element.

```
.background, #background, body{  
background:#E34480 }
```

If only the background color should be changed can be used:

```
.background{ background-color:#E34480 }
```

This example shows the color as background, it is applied via the CSS property "background".

To optimize and compress your CSS code, you can use our [online CSS compressor and optimizer](#) based on csstidy. If you want to create a linear or radial gradient as background or border, check our [CSS Gradient Generator](#).

Hey! You found this booklet interesting? Support Converting Colors with the new Membership Option!

The pro membership hides all ads, plus gives you double the colors in the color bucket, and more awesome pro features!

[Learn more, Memberships starting at \\$2.50/m!](#)

**Follow me
on Twitter!**

@ConvertingColor