

# Converting Colors

Hex(E3456F)

Have a look what the booklet for  
Hex(E3456F) contains.

<b>Hex(E3456F)</b> .....	3
<i><b>Conversions</b></i> .....	4
<i><b>Details</b></i> .....	6
<i><b>Harmonies</b></i> .....	11
<i><b>Previews</b></i> .....	23
<i><b>Color Blindness Simulation</b></i> .....	26
<i><b>CSS Examples</b></i> .....	29

# Color

**Hex(E3456F)**

# Conversions

## Conversions Part 1

<b>Format</b>	<b>Color</b>
Hex	E3456F
RGB	227, 69, 111
RGB Percent	89%, 27%, 44%
CMY	0.1098, 0.7294, 0.5647
CMYK	0.00, 0.70, 0.51, 0.11
HSL	344°, 74%, 58%
HSV	344°, 70%, 89%
XYZ	36.6759, 21.7348, 17.3011
YIQ	121.0300, 80.6860, 46.5580

# Conversions

## Conversions Part 2

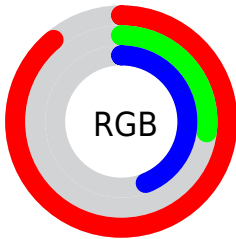
<b>Format</b>	<b>Color</b>
<b>R<sub>YB</sub></b>	227, 69, 111
Decimal	14894447
CIE <sub>Lab</sub>	53.74, 63.39, 11.92
CIE <sub>LCh</sub>	54, 64.502, 10.652
Yxy	21.7348, 0.4844, 0.2871
Android (android.graphics.Color)	4293084527 (0xFFE3456F)
YUV	121.0300, -4.9448, 92.9357
Hunter-Lab	46.6206, 58.8378, 10.6316

# Details

The Hex color **E3456F** is a dark color, and the websafe version is hex **CC3366**. The color can be described as middle muted rose. A complement of this color would be **45E3B9**, and the grayscale version is **797979**.

A 20% lighter version of the original color is **FF7FA2**, and **A60040** is the 20% darker color. If you saturate the color by 10%, you get **E32E5E**, and if you desaturate by 10%, it is **E35C80**.

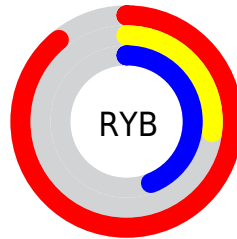
# Distribution



Red (89%)

Green (27%)

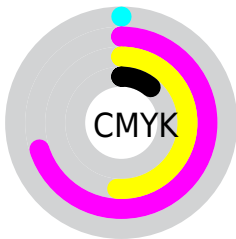
Blue (44%)



Red (89%)

Yellow (27%)

Blue (44%)

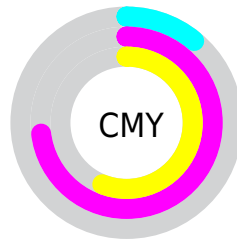


Cyan (0%)

Magenta (70%)

Yellow (51%)

Black (11%)



Cyan (11%)

Magenta (73%)

Yellow (56%)

# Brightness & Saturation Gradients

These gradients show how the Hex color E3456F changes by changing the brightness by 10 percent. The first figure shows a shift by +10% for each color and the second figure -10%.

Similar to the brightness gradients but the following saturation gradients show a change of the Hex color E3456F by changing the saturation by 10% instead.



 E3456F

 E3456F

FFFFFF

 C42357

 FF7FA2

 A60040

 FF9CBD

 88002A

 FFB9D9

 6A0016

 FFD6F5

 4D0002

 FFF3FF

 2F0002

 000000

 E3456F

 E3456F

 E32E5E

 E35C80

 E3184E

 E37290

 E3013D

 E389A1

 E3003C

 E3A0B2

 E3B6C2

 E3CDD3

 E3E4E4

 E3FBF4

 E3FFFF

# Harmonies

## Analogous

The Analogous color harmony consists of three colors that are next to each other on the color wheel.



D14EA7



E3456F



D8573A

# Triad

The Triadic color harmony groups three colors that are evenly spaced from another and form a triangle on the color wheel.



E3456F



499121



0090EA

# Complementary

The Complementary color scheme is a pair of colors which are on the opposite of each other on the color wheel.



E3456F



45E3B9

# Split Complementary

Split-complementary colors differ from the complementary color scheme. The scheme consists of three colors, the original color and two neighbors of the complement color.



0098C8



E3456F



009759

# Square

The Square scheme is like the rectangle color scheme, but the four colors are evenly spaced on the color wheel.



E3456F



888400



009A93



0081EF

# Rectangle

The Rectangle color scheme consists of four colors that form a rectangle on the color wheel.



E3456F



C46818



009A93



0094E1



# Sweetspot

The Sweet Spot groups the original color and five complimentary colors.



E3456F



FFC9D8



B945E3



806068



000000



808080



# Same Dimension

The Same Dimension uses a secret algorithm to generate beautiful new colors.



E3456F



FF2962



E36A45



73676A



B3002F



33000E



# Inverse Universe

The Inverse Universe completely reimagines the original color for something new.



E3456F



FF2962



45BEE3



73676A



B3002F

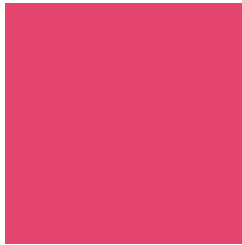


33000E



# Previews

## White Background



This preview shows how the Hex color E3456F looks on a white background.

## Color Contrast Check

Large Text (above 18pt) WCAG AA ✓ Pass

Any Text WCAG AA × Fail

Large Text (above 18pt) WCAG AAA × Fail

Any Text WCAG AAA × Fail

# Black Background



## Color Contrast Check

Large Text (above 18pt) WCAG AA ✓ Pass

Any Text WCAG AA ✓ Pass

Large Text (above 18pt) WCAG AAA ✓ Pass

Any Text WCAG AAA × Fail

If you want to check with other color combinations, try the [Color Contrast Checker](#).



## Hex E3456F Background



This preview shows how black text looks on a background with the Hex color E3456F.



This preview shows how white text looks on a background with the Hex color E3456F.

# Color Blindness Simulation

Color vision deficiency is a very complex topic, and I could not describe the different causes any better than Wikipedia does, so if you want to learn more, you should check out their [article about color blindness](#).

## Dichromacy



**Original Color**  
E3456F

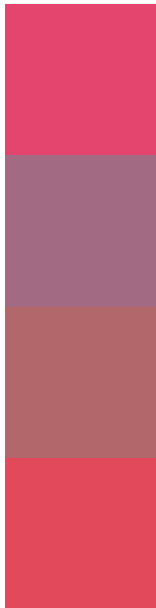
**Protanopia**  
7F808E

**Deuteranopia**  
967C67



**Tritanopia**  
E14C50

# Trichromacy



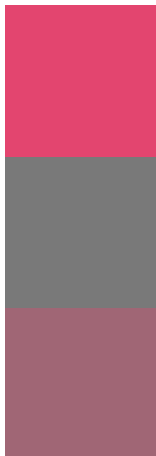
**Original Color**  
E3456F

**Protanomaly**  
A36B83

**Deuteranomaly**  
B2686A

**Tritanomaly**  
E2495B

# Monochromacy



**Original Color**  
E3456F

**Achromatopsia**  
797979

**Achromatomaly**  
A06675

# CSS Examples

## Text

The CSS property to change the color of the text to Hex E3456F is called "color". The color property can be set on classes, ids or directly on the HTML element.

This example shows how text in the color #E3456F looks like.

```
.text, #text, p{  
    color:#E3456F  
}
```

If you want to add a text shadow in that color use the text-shadow property, you can generate a text shadow directly with our [CSS Text Shadow Generator](#).

Here you see how black text with a 4 pixel #E3456F colored shadow looks like.

```
.shadow{ text-shadow: 4px 4px 2px #E3456F
}
```

## Border

The CSS property to change the border of an element to Hex E3456F is called "border". The border property can be set on classes, ids or directly on the HTML element.

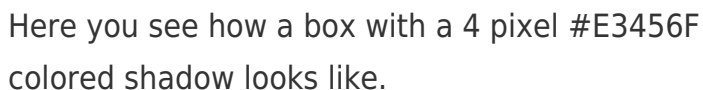
This example shows the color as border, it can be applied via the CSS property "border" or "border-color".

```
.border, #border, table{ border:4px solid
#E3456F }
```

If only the border color should be changed use the property `border-color`.

```
.border{ border-color:#E3456F }
```

If you want to add a box shadow in that color use:



Here you see how a box with a 4 pixel #E3456F colored shadow looks like.

```
.boxshadow{ -moz-box-shadow:4px 4px 4px  
4px #E3456F; -webkit-box-shadow:4px 4px  
4px 4px #E3456F; box-shadow:4px 4px 4px  
4px #E3456F }
```

# Background

The CSS property to change the background color of an element to Hex E3456F is called "background". The background property can be set on classes, ids or directly on the HTML element.

```
.background, #background, body{  
background:#E3456F }
```

If only the background color should be changed can be used:

```
.background{ background-color:#E3456F }
```

This example shows the color as background, it is applied via the CSS property "background".

To optimize and compress your CSS code, you can use our [online CSS compressor and optimizer](#) based on csstidy. If you want to create a linear or radial gradient as background or border, check our [CSS Gradient Generator](#).



Hey! You found this booklet interesting? Support Converting Colors with the new Membership Option!

The pro membership hides all ads, plus gives you double the colors in the color bucket, and more awesome pro features!

**[Learn more, Memberships starting at \\$2.50/m!](#)**

**Follow me  
on Twitter!**

@ConvertingColor