

Converting Colors

Hex(E34A77)

Have a look what the booklet for
Hex(E34A77) contains.

| | |
|--|----|
| Hex(E34A77) | 3 |
| <i>Conversions</i> | 4 |
| <i>Details</i> | 6 |
| <i>Harmonies</i> | 11 |
| <i>Previews</i> | 23 |
| <i>Color Blindness Simulation</i> | 26 |
| <i>CSS Examples</i> | 29 |

Color

Hex(E34A77)

Conversions

Conversions Part 1

| Format | Color |
|---------------|----------------------------|
| Hex | E34A77 |
| RGB | 227, 74, 119 |
| RGB Percent | 89%, 29%, 47% |
| CMY | 0.1098, 0.7098, 0.5333 |
| CMYK | 0.00, 0.67, 0.48, 0.11 |
| HSL | 342°, 73%, 59% |
| HSV | 342°, 67%, 89% |
| XYZ | 37.4571, 22.5604, 19.8331 |
| YIQ | 124.8770, 76.7430, 46.4310 |

Conversions

Conversions Part 2

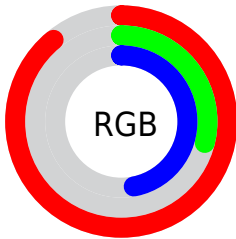
| Format | Color |
|-------------------------------------|-------------------------------|
| R_{YB} | 227, 74, 119 |
| Decimal | 14895735 |
| CIE _{Lab} | 54.62, 62.20, 8.38 |
| CIE _{LCh} | 55, 62.760, 7.674 |
| Yxy | 22.5604, 0.4691, 0.2825 |
| Android (android.graphics.Color) | 4293085815 (0xFFE34A77) |
| YUV | 124.8770, -2.8974, 89.5619 |
| Hunter-Lab | 47.4977, 57.6455, 8.4913 |

Details

The Hex color **E34A77** is a dark color, and the websafe version is hex **CC3366**. The color can be described as middle muted rose. A complement of this color would be **4AE3B6**, and the grayscale version is **7D7D7D**.

A 20% lighter version of the original color is **FF83AB**, and **A60047** is the 20% darker color. If you saturate the color by 10%, you get **E33367**, and if you desaturate by 10%, it is **E36187**.

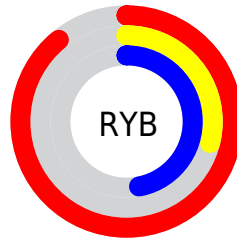
Distribution



Red (89%)

Green (29%)

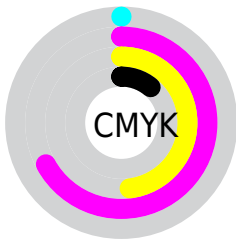
Blue (47%)



Red (89%)

Yellow (29%)

Blue (47%)

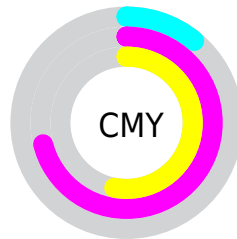


Cyan (0%)

Magenta (67%)

Yellow (48%)

Black (11%)



Cyan (11%)

Magenta (71%)

Yellow (53%)

Brightness & Saturation Gradients

These gradients show how the Hex color E34A77 changes by changing the brightness by 10 percent. The first figure shows a shift by +10% for each color and the second figure -10%.

Similar to the brightness gradients but the following saturation gradients show a change of the Hex color E34A77 by changing the saturation by 10% instead.

 E34A77

 E34A77

FFFFFF

 C42A5E

 FF83AB

 A60047

 FFA0C6

 880031

 FFBDE2

 6B001D

 FFDAFF

 4E0001

 FFF8FF

 310002

 000000

 E34A77

 E34A77

 E33367

 E36187

 E31D57

 E37797

 E30647

 E38EA7

 E30043

 E3A5B7

 E3BCC7

 E3D2D7

 E3E9E7

 E3FFF7

 E3FFFF

Harmonies

Analogous

The Analogous color harmony consists of three colors that are next to each other on the color wheel.



CE55AD



E34A77



DB5943

Triad

The Triadic color harmony groups three colors that are evenly spaced from another and form a triangle on the color wheel.



E34A77



559222



0093E7

Complementary

The Complementary color scheme is a pair of colors which are on the opposite of each other on the color wheel.



E34A77



4AE3B6

Split Complementary

Split-complementary colors differ from the complementary color scheme. The scheme consists of three colors, the original color and two neighbors of the complement color.



009AC4



E34A77



009957

Square

The Square scheme is like the rectangle color scheme, but the four colors are evenly spaced on the color wheel.



E34A77



908500



009C90



0085EF

Rectangle

The Rectangle color scheme consists of four colors that form a rectangle on the color wheel.



E34A77



C96923



009C90



0096DE

Sweetspot

The Sweet Spot groups the original color and five complimentary colors.



E34A77



FFCCDB



B54AE3



80616A



000000



808080

Same Dimension

The Same Dimension uses a secret algorithm to generate beautiful new colors.



E34A77



FF306D



E3694A



73676B



B30034



33000F

Inverse Universe

The Inverse Universe completely reimagines the original color for something new.



E34A77



FF306D



4AC4E3



73676B



B30035



33000F

Previews

White Background



This preview shows how the Hex color E34A77 looks on a white background.

Color Contrast Check

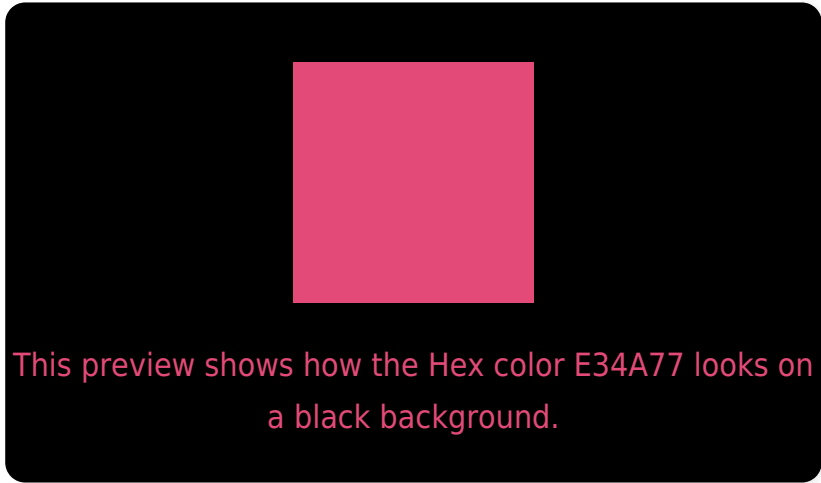
Large Text (above 18pt) WCAG AA ✓ Pass

Any Text WCAG AA × Fail

Large Text (above 18pt) WCAG AAA × Fail

Any Text WCAG AAA × Fail

Black Background



Color Contrast Check

Large Text (above 18pt) WCAG AA ✓ Pass

Any Text WCAG AA ✓ Pass

Large Text (above 18pt) WCAG AAA ✓ Pass

Any Text WCAG AAA × Fail

If you want to check with other color combinations, try the [Color Contrast Checker](#).

Hex E34A77 Background



This preview shows how black text looks on a background with the Hex color E34A77.

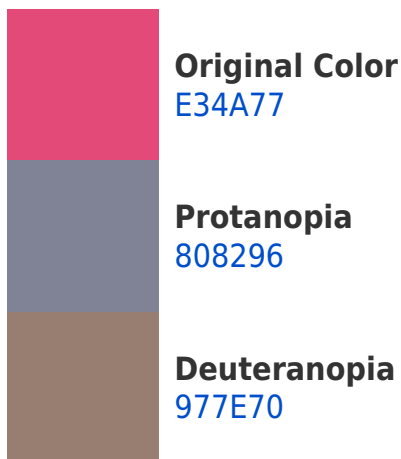



This preview shows how white text looks on a background with the Hex color E34A77.

Color Blindness Simulation

Color vision deficiency is a very complex topic, and I could not describe the different causes any better than Wikipedia does, so if you want to learn more, you should check out their [article about color blindness](#).

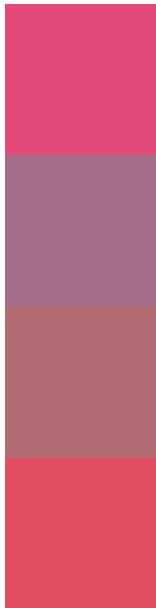
Dichromacy





Tritanopia
E15156

Trichromacy



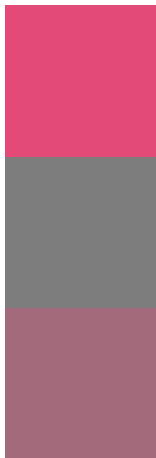
Original Color
E34A77

Protanomaly
A46E8B

Deuteranomaly
B36B73

Tritanomaly
E24E62

Monochromacy



Original Color
E34A77

Achromatopsia
7D7D7D

Achromatomaly
A26A7B

CSS Examples

Text

The CSS property to change the color of the text to Hex E34A77 is called "color". The color property can be set on classes, ids or directly on the HTML element.

This example shows how text in the color #E34A77 looks like.

```
.text, #text, p{  
  color:#E34A77  
}
```

If you want to add a text shadow in that color use the text-shadow property, you can generate a text shadow directly with our [CSS Text Shadow Generator](#).

Here you see how black text with a 4 pixel #E34A77 colored shadow looks like.

```
.shadow{ text-shadow: 4px 4px 2px #E34A77
}
```

Border

The CSS property to change the border of an element to Hex E34A77 is called "border". The border property can be set on classes, ids or directly on the HTML element.

This example shows the color as border, it can be applied via the CSS property "border" or "border-color".

```
.border, #border, table{ border:4px solid
#E34A77 }
```

If only the border color should be changed use the property `border-color`.

```
.border{ border-color:#E34A77 }
```

If you want to add a box shadow in that color use:

Here you see how a box with a 4 pixel #E34A77 colored shadow looks like.

```
.boxshadow{ -moz-box-shadow:4px 4px 4px  
4px #E34A77; -webkit-box-shadow:4px 4px  
4px 4px #E34A77; box-shadow:4px 4px 4px  
4px #E34A77 }
```

Background

The CSS property to change the background color of an element to Hex E34A77 is called "background". The background property can be set on classes, ids or directly on the HTML element.

```
.background, #background, body{  
background:#E34A77 }
```

If only the background color should be changed can be used:

```
.background{ background-color:#E34A77 }
```

This example shows the color as background, it is applied via the CSS property "background".

To optimize and compress your CSS code, you can use our [online CSS compressor and optimizer](#) based on csstidy. If you want to create a linear or radial gradient as background or border, check our [CSS Gradient Generator](#).

Hey! You found this booklet interesting? Support Converting Colors with the new Membership Option!

The pro membership hides all ads, plus gives you double the colors in the color bucket, and more awesome pro features!

[Learn more, Memberships starting at \\$2.50/m!](#)

**Follow me
on Twitter!**

@ConvertingColor