

Converting Colors

Hex(E34D6D)

Have a look what the booklet for
Hex(E34D6D) contains.

Hex(E34D6D)	3
<i>Conversions</i>	4
<i>Details</i>	6
<i>Harmonies</i>	11
<i>Previews</i>	23
<i>Color Blindness Simulation</i>	26
<i>CSS Examples</i>	29

Color

Hex(E34D6D)

Conversions

Conversions Part 1

Format	Color
Hex	E34D6D
RGB	227, 77, 109
RGB Percent	89%, 30%, 43%
CMY	0.1098, 0.6980, 0.5725
CMYK	0.00, 0.66, 0.52, 0.11
HSL	347°, 73%, 60%
HSV	347°, 66%, 89%
XYZ	37.0927, 22.7428, 16.9028
YIQ	125.4980, 79.1280, 41.7520

Conversions

Conversions Part 2

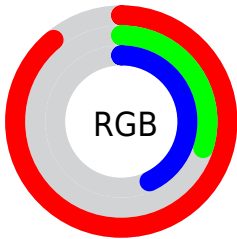
Format	Color
R_{YB}	227, 77, 109
Decimal	14896493
CIE _{Lab}	54.81, 60.19, 14.59
CIE _{LCh}	55, 61.931, 13.627
Yxy	22.7428, 0.4834, 0.2964
Android (android.graphics.Color)	4293086573 (0xFFE34D6D)
YUV	125.4980, -8.1335, 89.0173
Hunter-Lab	47.6894, 55.3807, 12.3681

Details

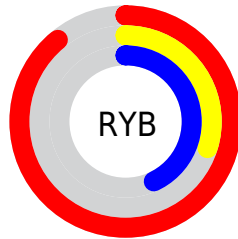
The Hex color **E34D6D** is a dark color, and the websafe version is hex **CC3366**. The color can be described as middle muted rose. A complement of this color would be **4DE3C3**, and the grayscale version is **7E7E7E**.

A 20% lighter version of the original color is **FF86A0**, and **A6003E** is the 20% darker color. If you saturate the color by 10%, you get **E3365B**, and if you desaturate by 10%, it is **E3647F**.

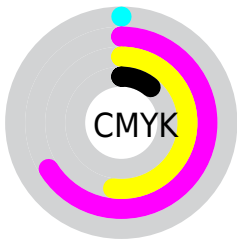
Distribution



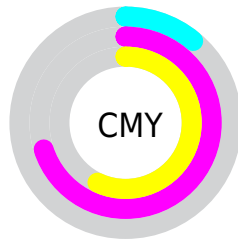
- Red (89%)
- Green (30%)
- Blue (43%)



- Red (89%)
- Yellow (30%)
- Blue (43%)



- Cyan (0%)
- Magenta (66%)
- Yellow (52%)
- Black (11%)



- Cyan (11%)
- Magenta (70%)
- Yellow (57%)

Brightness & Saturation Gradients

These gradients show how the Hex color E34D6D changes by changing the brightness by 10 percent. The first figure shows a shift by +10% for each color and the second figure -10%.

Similar to the brightness gradients but the following saturation gradients show a change of the Hex color E34D6D by changing the saturation by 10% instead.

 E34D6D

 E34D6D

FFFFFF

 C42E55

 FF86A0

 A6003E

 FFA2BB

 880028

 FFBFD7

 6A0015

 FFDCF3

 4D0001

 FFFAFF

 300002

 000000

 E34D6D

 E34D6D

 E3365B

 E3647F

 E32049

 E37A91

 E30937

 E391A3

 E30030

 E3A8B4

 E3BEC6

 E3D5D8

 E3ECEA

 E3FFFC

 E3FFFF

Harmonies

Analogous

The Analogous color harmony consists of three colors that are next to each other on the color wheel.



D452A3



E34D6D



D65F3B

Triad

The Triadic color harmony groups three colors that are evenly spaced from another and form a triangle on the color wheel.



E34D6D



48942E



0091EA

Complementary

The Complementary color scheme is a pair of colors which are on the opposite of each other on the color wheel.



E34D6D



4DE3C3

Split Complementary

Split-complementary colors differ from the complementary color scheme. The scheme consists of three colors, the original color and two neighbors of the complement color.



009ACC



E34D6D



009A63

Square

The Square scheme is like the rectangle color scheme, but the four colors are evenly spaced on the color wheel.



E34D6D



868800



009C9B



3C81EC

Rectangle

The Rectangle color scheme consists of four colors that form a rectangle on the color wheel.



E34D6D



C26E1C



009C9B



0095E3

Sweetspot

The Sweet Spot groups the original color and five complimentary colors.



E34D6D



FFCCD7



C24DE3



806167



000000



808080

Same Dimension

The Same Dimension uses a secret algorithm to generate beautiful new colors.



E34D6D



FF3661



E3774D



73676A



B30026



33000B

Inverse Universe

The Inverse Universe completely reimagines the original color for something new.



E34D6D



FF3661



4DB8E3



73676A



B30026



33000B

Previews

White Background



This preview shows how the Hex color E34D6D looks on a white background.

Color Contrast Check

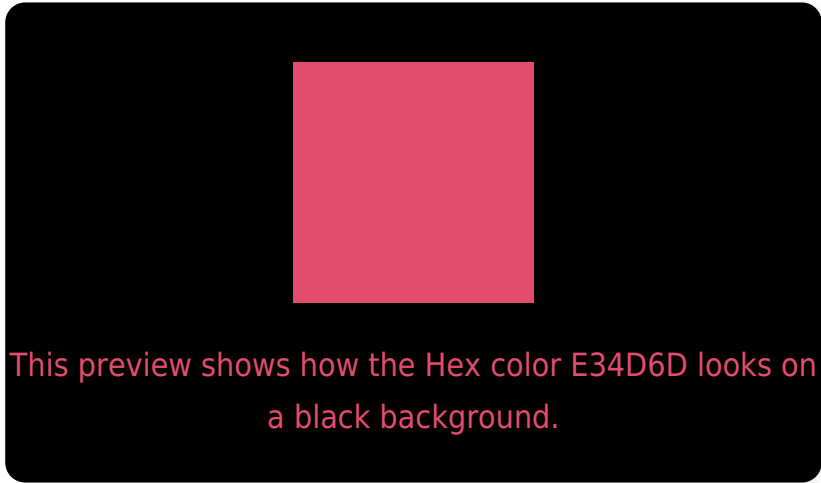
Large Text (above 18pt) WCAG AA ✓ Pass

Any Text WCAG AA × Fail

Large Text (above 18pt) WCAG AAA × Fail

Any Text WCAG AAA × Fail

Black Background



Color Contrast Check

Large Text (above 18pt) WCAG AA ✓ Pass

Any Text WCAG AA ✓ Pass

Large Text (above 18pt) WCAG AAA ✓ Pass

Any Text WCAG AAA × Fail

If you want to check with other color combinations, try the [Color Contrast Checker](#).

Hex E34D6D Background



This preview shows how black text looks on a background with the Hex color E34D6D.

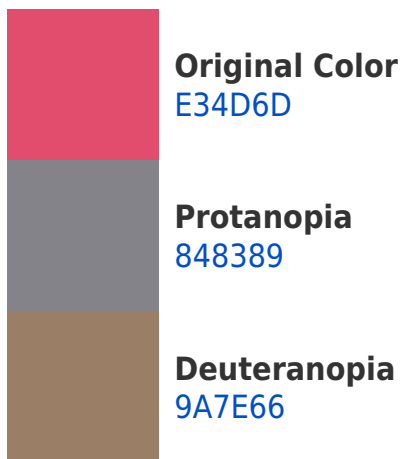


This preview shows how white text looks on a background with the Hex color E34D6D.

Color Blindness Simulation

Color vision deficiency is a very complex topic, and I could not describe the different causes any better than Wikipedia does, so if you want to learn more, you should check out their [article about color blindness](#).

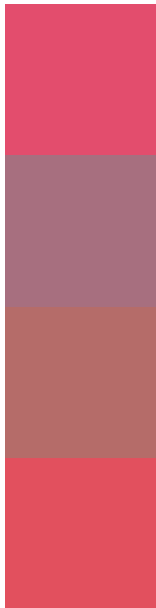
Dichromacy





Tritanopia
E25156

Trichromacy



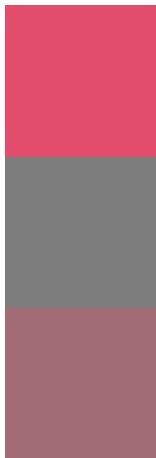
Original Color
E34D6D

Protanomaly
A76F7F

Deuteranomaly
B56C69

Tritanomaly
E2505E

Monochromacy



Original Color
E34D6D

Achromatopsia
7D7D7D

Achromatomaly
A26C77

CSS Examples

Text

The CSS property to change the color of the text to Hex E34D6D is called "color". The color property can be set on classes, ids or directly on the HTML element.

This example shows how text in the color #E34D6D looks like.

```
.text, #text, p{  
  color:#E34D6D  
}
```

If you want to add a text shadow in that color use the text-shadow property, you can generate a text shadow directly with our [CSS Text Shadow Generator](#).

Here you see how black text with a 4 pixel #E34D6D colored shadow looks like.

```
.shadow{ text-shadow: 4px 4px 2px #E34D6D
}
```

Border

The CSS property to change the border of an element to Hex E34D6D is called "border". The border property can be set on classes, ids or directly on the HTML element.

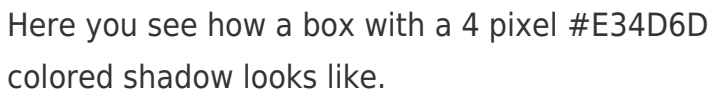
This example shows the color as border, it can be applied via the CSS property "border" or "border-color".

```
.border, #border, table{ border:4px solid
#E34D6D }
```

If only the border color should be changed use the property `border-color`.

```
.border{ border-color:#E34D6D }
```

If you want to add a box shadow in that color use:



Here you see how a box with a 4 pixel #E34D6D colored shadow looks like.

```
.boxshadow{ -moz-box-shadow:4px 4px 4px  
4px #E34D6D; -webkit-box-shadow:4px 4px  
4px 4px #E34D6D; box-shadow:4px 4px 4px  
4px #E34D6D }
```

Background

The CSS property to change the background color of an element to Hex E34D6D is called "background". The background property can be set on classes, ids or directly on the HTML element.

```
.background, #background, body{  
background:#E34D6D }
```

If only the background color should be changed can be used:

```
.background{ background-color:#E34D6D }
```

This example shows the color as background, it is applied via the CSS property "background".

To optimize and compress your CSS code, you can use our [online CSS compressor and optimizer](#) based on csstidy. If you want to create a linear or radial gradient as background or border, check our [CSS Gradient Generator](#).

Hey! You found this booklet interesting? Support Converting Colors with the new Membership Option!

The pro membership hides all ads, plus gives you double the colors in the color bucket, and more awesome pro features!

[Learn more, Memberships starting at \\$2.50/m!](#)

**Follow me
on Twitter!**

@ConvertingColor