

Converting Colors

Hex(E34E6F)

Have a look what the booklet for
Hex(E34E6F) contains.

Hex(E34E6F)	3
<i>Conversions</i>	4
<i>Details</i>	6
<i>Harmonies</i>	11
<i>Previews</i>	23
<i>Color Blindness Simulation</i>	26
<i>CSS Examples</i>	29

Color

Hex(E34E6F)

Conversions

Conversions Part 1

Format	Color
Hex	E34E6F
RGB	227, 78, 111
RGB Percent	89%, 31%, 44%
CMY	0.1098, 0.6941, 0.5647
CMYK	0.00, 0.66, 0.51, 0.11
HSL	347°, 73%, 60%
HSV	347°, 66%, 89%
XYZ	37.2722, 22.9274, 17.4999
YIQ	126.3130, 78.2110, 41.8510

Conversions

Conversions Part 2

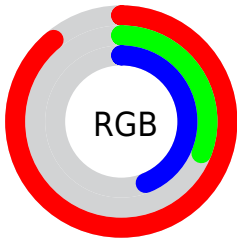
Format	Color
R_{YB}	227, 78, 111
Decimal	14896751
CIE _{Lab}	55.00, 59.95, 13.67
CIE _{LCh}	55, 61.491, 12.844
Yxy	22.9274, 0.4797, 0.2951
Android (android.graphics.Color)	4293086831 (0xFFE34E6F)
YUV	126.3130, -7.5493, 88.3025
Hunter-Lab	47.8825, 55.1515, 11.8487

Details

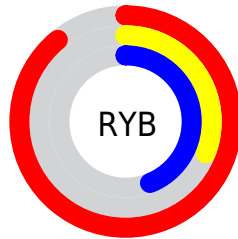
The Hex color **E34E6F** is a dark color, and the websafe version is hex **CC3366**. The color can be described as middle muted rose. A complement of this color would be **4EE3C2**, and the grayscale version is **7E7E7E**.

A 20% lighter version of the original color is **FF87A2**, and **A60140** is the 20% darker color. If you saturate the color by 10%, you get **E3375D**, and if you desaturate by 10%, it is **E36581**.

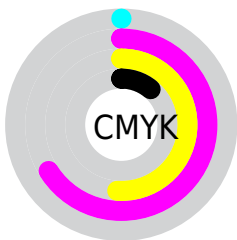
Distribution



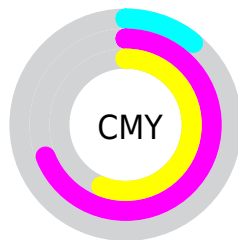
- Red (89%)
- Green (31%)
- Blue (44%)



- Red (89%)
- Yellow (31%)
- Blue (44%)



- Cyan (0%)
- Magenta (66%)
- Yellow (51%)
- Black (11%)



- Cyan (11%)
- Magenta (69%)
- Yellow (56%)

Brightness & Saturation Gradients

These gradients show how the Hex color E34E6F changes by changing the brightness by 10 percent. The first figure shows a shift by +10% for each color and the second figure -10%.

Similar to the brightness gradients but the following saturation gradients show a change of the Hex color E34E6F by changing the saturation by 10% instead.

 E34E6F

 E34E6F

FFFFFF

 C43057

 FF87A2

 A60140

 FFA3BD

 88002A

 FFC0D9

 6A0016

 FFDDF6

 4E0001

 FFFAFF

 310002

 000000

 E34E6F

 E34E6F

 E3375D

 E36581

 E3214C

 E37B92

 E30A3A

 E392A4

 E30032

 E3A9B6

 E3C0C7

 E3D6D9

 E3EDEB

 E3FFFC

 E3FFFF

Harmonies

Analogous

The Analogous color harmony consists of three colors that are next to each other on the color wheel.



D454A4



E34E6F



D75F3D

Triad

The Triadic color harmony groups three colors that are evenly spaced from another and form a triangle on the color wheel.



E34E6F



4B942E



0092E9

Complementary

The Complementary color scheme is a pair of colors which are on the opposite of each other on the color wheel.



E34E6F



4EE3C2

Split Complementary

Split-complementary colors differ from the complementary color scheme. The scheme consists of three colors, the original color and two neighbors of the complement color.



009ACB



E34E6F



009A62

Square

The Square scheme is like the rectangle color scheme, but the four colors are evenly spaced on the color wheel.



E34E6F



888800



009C9A



3982EC

Rectangle

The Rectangle color scheme consists of four colors that form a rectangle on the color wheel.



E34E6F



C36E1F



009C9A



0096E2

Sweetspot

The Sweet Spot groups the original color and five complimentary colors.



E34E6F



FFCCD7



C04EE3



806168



000000



808080

Same Dimension

The Same Dimension uses a secret algorithm to generate beautiful new colors.



E34E6F



FF3662



E3764E



73676A



B30028



33000B

Inverse Universe

The Inverse Universe completely reimagines the original color for something new.



E34E6F



FF3662



4EBBE3



73676A



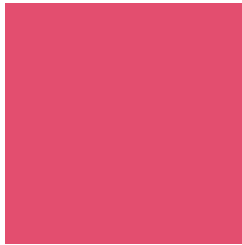
B30028



33000B

Previews

White Background



This preview shows how the Hex color E34E6F looks on a white background.

Color Contrast Check

Large Text (above 18pt) WCAG AA ✓ Pass

Any Text WCAG AA × Fail

Large Text (above 18pt) WCAG AAA × Fail

Any Text WCAG AAA × Fail

Black Background



Color Contrast Check

Large Text (above 18pt) WCAG AA ✓ Pass

Any Text WCAG AA ✓ Pass

Large Text (above 18pt) WCAG AAA ✓ Pass

Any Text WCAG AAA × Fail

If you want to check with other color combinations, try the [Color Contrast Checker](#).

Hex E34E6F Background



This preview shows how black text looks on a background with the Hex color E34E6F.

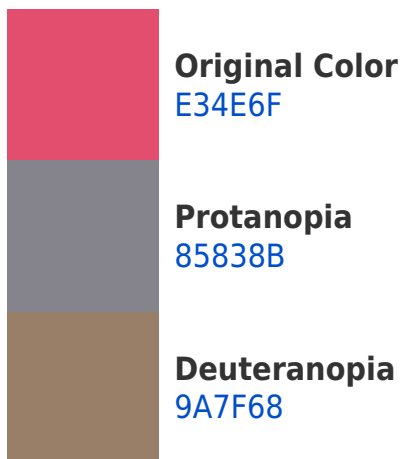



This preview shows how white text looks on a background with the Hex color E34E6F.

Color Blindness Simulation

Color vision deficiency is a very complex topic, and I could not describe the different causes any better than Wikipedia does, so if you want to learn more, you should check out their [article about color blindness](#).

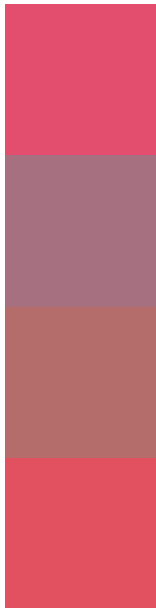
Dichromacy





Tritanopia
E25358

Trichromacy



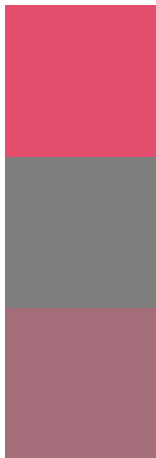
Original Color
E34E6F

Protanomaly
A77081

Deuteranomaly
B56D6B

Tritanomaly
E25160

Monochromacy



Original Color
E34E6F

Achromatopsia
7E7E7E

Achromatomaly
A36D79

CSS Examples

Text

The CSS property to change the color of the text to Hex E34E6F is called "color". The color property can be set on classes, ids or directly on the HTML element.

This example shows how text in the color #E34E6F looks like.

```
.text, #text, p{  
  color:#E34E6F  
}
```

If you want to add a text shadow in that color use the text-shadow property, you can generate a text shadow directly with our [CSS Text Shadow Generator](#).

Here you see how black text with a 4 pixel #E34E6F colored shadow looks like.

```
.shadow{ text-shadow: 4px 4px 2px #E34E6F
}
```

Border

The CSS property to change the border of an element to Hex E34E6F is called "border". The border property can be set on classes, ids or directly on the HTML element.

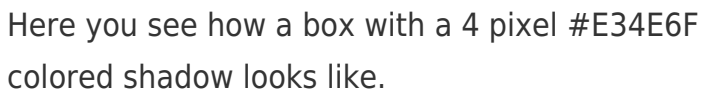
This example shows the color as border, it can be applied via the CSS property "border" or "border-color".

```
.border, #border, table{ border:4px solid
#E34E6F }
```

If only the border color should be changed use the property `border-color`.

```
.border{ border-color:#E34E6F }
```

If you want to add a box shadow in that color use:



Here you see how a box with a 4 pixel #E34E6F colored shadow looks like.

```
.boxshadow{ -moz-box-shadow:4px 4px 4px  
4px #E34E6F; -webkit-box-shadow:4px 4px  
4px 4px #E34E6F; box-shadow:4px 4px 4px  
4px #E34E6F }
```

Background

The CSS property to change the background color of an element to Hex E34E6F is called "background". The background property can be set on classes, ids or directly on the HTML element.

```
.background, #background, body{  
background:#E34E6F }
```

If only the background color should be changed can be used:

```
.background{ background-color:#E34E6F }
```

This example shows the color as background, it is applied via the CSS property "background".

To optimize and compress your CSS code, you can use our [online CSS compressor and optimizer](#) based on csstidy. If you want to create a linear or radial gradient as background or border, check our [CSS Gradient Generator](#).

Hey! You found this booklet interesting? Support Converting Colors with the new Membership Option!

The pro membership hides all ads, plus gives you double the colors in the color bucket, and more awesome pro features!

[Learn more, Memberships starting at \\$2.50/m!](#)

**Follow me
on Twitter!**

@ConvertingColor