

Converting Colors

Hex(E37E6D)

Have a look what the booklet for
Hex(E37E6D) contains.

Hex(E37E6D)	3
<i>Conversions</i>	4
<i>Details</i>	6
<i>Harmonies</i>	11
<i>Previews</i>	23
<i>Color Blindness Simulation</i>	26
<i>CSS Examples</i>	29

Color

Hex(E37E6D)

Conversions

Conversions Part 1

Format	Color
Hex	E37E6D
RGB	227, 126, 109
RGB Percent	89%, 49%, 43%
CMY	0.1098, 0.5059, 0.5725
CMYK	0.00, 0.44, 0.52, 0.11
HSL	9°, 68%, 66%
HSV	9°, 52%, 89%
XYZ	41.8997, 32.3567, 18.5051
YIQ	154.2610, 65.6530, 16.1250

Conversions

Conversions Part 2

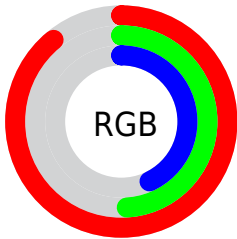
Format	Color
R _Y B	227, 129, 109
Decimal	14909037
CIE Lab	63.64, 37.27, 26.52
CIE LCh	64, 45.746, 35.433
Yxy	32.3567, 0.4517, 0.3488
Android (android.graphics.Color)	4293099117 (0xFFE37E6D)
YUV	154.2610, -22.3137, 63.7921
Hunter-Lab	56.8830, 31.9370, 20.5299

Details

The Hex color **E37E6D** is a light color, and the websafe version is hex **CC6666**. A complement of this color would be **6DD2E3**, and the grayscale version is **9A9A9A**.

A 20% lighter version of the original color is **FFB4A1**, and **A84B3D** is the 20% darker color. If you saturate the color by 10%, you get **E36B56**, and if you desaturate by 10%, it is **E39184**.

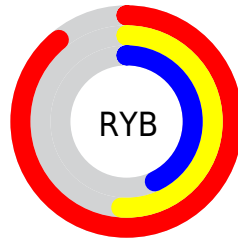
Distribution



Red (89%)

Green (49%)

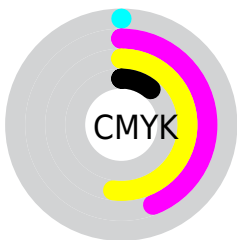
Blue (43%)



Red (89%)

Yellow (51%)

Blue (43%)

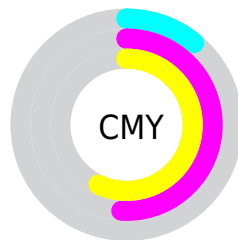


Cyan (0%)

Magenta (44%)

Yellow (52%)

Black (11%)



Cyan (11%)

Magenta (51%)

Yellow (57%)

Brightness & Saturation Gradients

These gradients show how the Hex color E37E6D changes by changing the brightness by 10 percent. The first figure shows a shift by +10% for each color and the second figure -10%.

Similar to the brightness gradients but the following saturation gradients show a change of the Hex color E37E6D by changing the saturation by 10% instead.

 E37E6D

 E37E6D

FFFFFF

 C56455

 FFB4A1

 A84B3D

 FFD0BC

 8B3227

 FFEDD8

 6E1712

 FFFFF4

 520000

 370000

 160000

 000000

 E37E6D

 E37E6D

 E36B56

 E39184

 E35740

 E3A59A

 E34429

 E3B8B1

 E33012

 E3CCC8

 E32100

 E3DFDE

 E3F3F5

 E3FFFF

Harmonies

Analogous

The Analogous color harmony consists of three colors that are next to each other on the color wheel.



E67894



E37E6D



CE8C50

Triad

The Triadic color harmony groups three colors that are evenly spaced from another and form a triangle on the color wheel.



E37E6D



49AC77



629CEB

Complementary

The Complementary color scheme is a pair of colors which are on the opposite of each other on the color wheel.



E37E6D



6DD2E3

Split Complementary

Split-complementary colors differ from the complementary color scheme. The scheme consists of three colors, the original color and two neighbors of the complement color.



00A7E4



E37E6D



00AFA0

Square

The Square scheme is like the rectangle color scheme, but the four colors are evenly spaced on the color wheel.



E37E6D



81A555



00AEC8



A78DDD

Rectangle

The Rectangle color scheme consists of four colors that form a rectangle on the color wheel.



E37E6D



B89647



00AEC8



41A0EB

Sweetspot

The Sweet Spot groups the original color and five complimentary colors.



E37E6D



FFDCD6



E36DD3



806B67



000000



808080

Same Dimension

The Same Dimension uses a secret algorithm to generate beautiful new colors.



E37E6D



FF7861



E3B86D



736967



B31A00



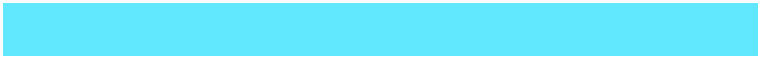
330700

Inverse Universe

The Inverse Universe completely reimagines the original color for something new.



6DD2E3



61E8FF



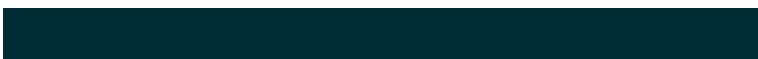
6D98E3



677173



0099B3



002C33

Previews

White Background



This preview shows how the Hex color E37E6D looks on a white background.

Color Contrast Check

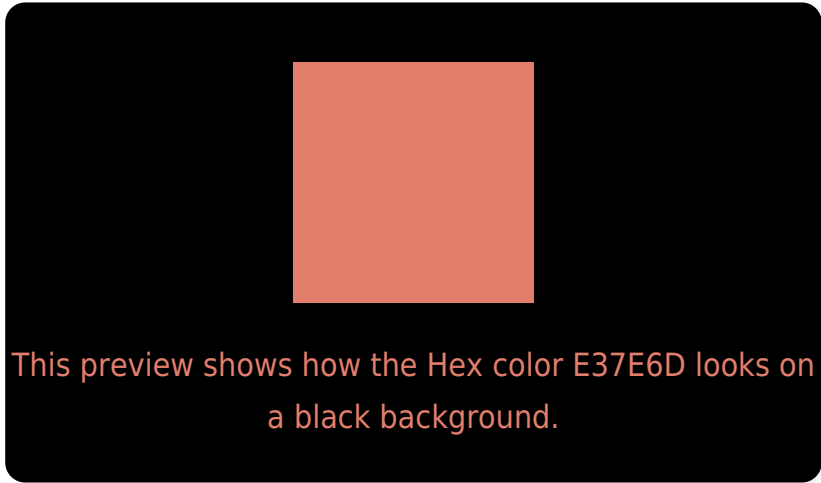
Large Text (above 18pt) WCAG AA × Fail

Any Text WCAG AA × Fail

Large Text (above 18pt) WCAG AAA × Fail

Any Text WCAG AAA × Fail

Black Background



Color Contrast Check

Large Text (above 18pt) WCAG AA ✓ Pass

Any Text WCAG AA ✓ Pass

Large Text (above 18pt) WCAG AAA ✓ Pass

Any Text WCAG AAA ✓ Pass

If you want to check with other color combinations, try the [Color Contrast Checker](#).

Hex E37E6D Background



This preview shows how black text looks on a background with the Hex color E37E6D.

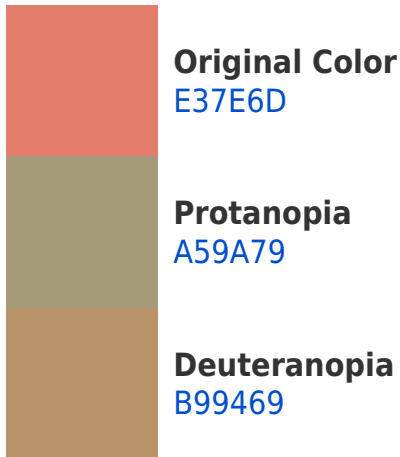


This preview shows how white text looks on a background with the Hex color E37E6D.

Color Blindness Simulation

Color vision deficiency is a very complex topic, and I could not describe the different causes any better than Wikipedia does, so if you want to learn more, you should check out their [article about color blindness](#).

Dichromacy



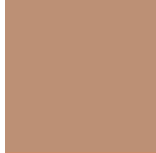


Tritanopia
E57B84

Trichromacy



Original Color
E37E6D



Protanomaly
BC9075



Deuteranomaly
C88C6A

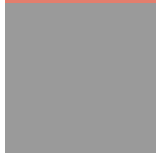


Tritanomaly
E47C7C

Monochromacy



Original Color
E37E6D



Achromatopsia
9A9A9A



Achromatomaly
B5908A

CSS Examples

Text

The CSS property to change the color of the text to Hex E37E6D is called "color". The color property can be set on classes, ids or directly on the HTML element.

This example shows how text in the color #E37E6D looks like.

```
.text, #text, p{  
    color:#E37E6D  
}
```

If you want to add a text shadow in that color use the text-shadow property, you can generate a text shadow directly with our [CSS Text Shadow Generator](#).

Here you see how black text with a 4 pixel #E37E6D colored shadow looks like.

```
.shadow{ text-shadow: 4px 4px 2px #E37E6D
}
```

Border

The CSS property to change the border of an element to Hex E37E6D is called "border". The border property can be set on classes, ids or directly on the HTML element.

This example shows the color as border, it can be applied via the CSS property "border" or "border-color".

```
.border, #border, table{ border:4px solid
#E37E6D }
```

If only the border color should be changed use the property `border-color`.

```
.border{ border-color:#E37E6D }
```

If you want to add a box shadow in that color use:

Here you see how a box with a 4 pixel #E37E6D colored shadow looks like.

```
.boxshadow{ -moz-box-shadow:4px 4px 4px  
4px #E37E6D; -webkit-box-shadow:4px 4px  
4px 4px #E37E6D; box-shadow:4px 4px 4px  
4px #E37E6D }
```

Background

The CSS property to change the background color of an element to Hex E37E6D is called "background". The background property can be set on classes, ids or directly on the HTML element.

```
.background, #background, body{  
background:#E37E6D }
```

If only the background color should be changed can be used:

```
.background{ background-color:#E37E6D }
```

This example shows the color as background, it is applied via the CSS property "background".

To optimize and compress your CSS code, you can use our [online CSS compressor and optimizer](#) based on csstidy. If you want to create a linear or radial gradient as background or border, check our [CSS Gradient Generator](#).

Hey! You found this booklet interesting? Support Converting Colors with the new Membership Option!

The pro membership hides all ads, plus gives you double the colors in the color bucket, and more awesome pro features!

[Learn more, Memberships starting at \\$2.50/m!](#)

**Follow me
on Twitter!**

@ConvertingColor