

Converting Colors

Hex(E387A5)

Have a look what the booklet for
Hex(E387A5) contains.

Hex(E387A5)	3
<i>Conversions</i>	4
<i>Details</i>	6
<i>Harmonies</i>	11
<i>Previews</i>	23
<i>Color Blindness Simulation</i>	26
<i>CSS Examples</i>	29

Color

Hex(E387A5)

Conversions

Conversions Part 1

Format	Color
Hex	E387A5
RGB	227, 135, 165
RGB Percent	89%, 53%, 65%
CMY	0.1098, 0.4706, 0.3529
CMYK	0.00, 0.41, 0.27, 0.11
HSL	340°, 62%, 71%
HSV	340°, 41%, 89%
XYZ	47.1341, 36.3755, 40.1342
YIQ	165.9280, 45.2020, 28.8340

Conversions

Conversions Part 2

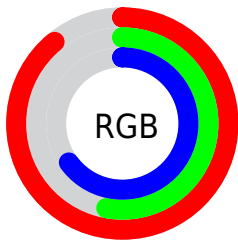
Format	Color
R _Y B	227, 135, 165
Decimal	14911397
CIE Lab	66.81, 38.84, -0.63
CIE LCh	67, 38.847, 359.069
Yxy	36.3755, 0.3812, 0.2942
Android (android.graphics.Color)	4293101477 (0xFFE387A5)
YUV	165.9280, -0.4575, 53.5601
Hunter-Lab	60.3121, 33.9522, 2.7643

Details

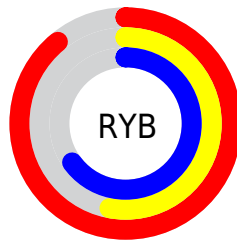
The Hex color **E387A5** is a light color, and the websafe version is hex **FF99CC**. A complement of this color would be **87E3C5**, and the grayscale version is **A6A6A6**.

A 20% lighter version of the original color is **FFBEDC**, and **A95371** is the 20% darker color. If you saturate the color by 10%, you get **E37096**, and if you desaturate by 10%, it is **E39EB4**.

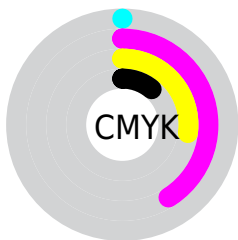
Distribution



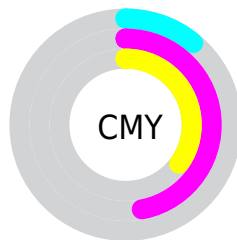
- Red (89%)
- Green (53%)
- Blue (65%)



- Red (89%)
- Yellow (53%)
- Blue (65%)



- Cyan (0%)
- Magenta (41%)
- Yellow (27%)
- Black (11%)



- Cyan (11%)
- Magenta (47%)
- Yellow (35%)

Brightness & Saturation Gradients

These gradients show how the Hex color E387A5 changes by changing the brightness by 10 percent. The first figure shows a shift by +10% for each color and the second figure -10%.

Similar to the brightness gradients but the following saturation gradients show a change of the Hex color E387A5 by changing the saturation by 10% instead.

 E387A5

 E387A5

FFFFFF

 C66D8B

 FFBEDC

 A95371

 FFD8F8

 8E3A59

 FFF7FF

 722042

 58012C

 3E0017

 270001

 000000

 E387A5

 E387A5

 E37096

 E39EB4

 E35A86

 E3B4C4

 E34377

 E3CBD3

 E32C68

 E3E2E2

 E31659

 E3F9F1

 E3004A

 E3FFFF

Harmonies

Analogous

The Analogous color harmony consists of three colors that are next to each other on the color wheel.



CD8EC7



E387A5



E58A82

Triad

The Triadic color harmony groups three colors that are evenly spaced from another and form a triangle on the color wheel.



E387A5



96AB64



1EAFDE

Complementary

The Complementary color scheme is a pair of colors which are on the opposite of each other on the color wheel.



E387A5



87E3C5

Split Complementary

Split-complementary colors differ from the complementary color scheme. The scheme consists of three colors, the original color and two neighbors of the complement color.



00B4C3



E387A5



6CB27D

Square

The Square scheme is like the rectangle color scheme, but the four colors are evenly spaced on the color wheel.



E387A5



BAA05C



38B5A0



6CA6E8

Rectangle

The Rectangle color scheme consists of four colors that form a rectangle on the color wheel.



E387A5



DD906F



38B5A0



00B2D6

Sweetspot

The Sweet Spot groups the original color and five complimentary colors.



E387A5



FFE0EA



C487E3



806E73



000000



808080

Same Dimension

The Same Dimension uses a secret algorithm to generate beautiful new colors.



E387A5



FF82AB



E39687



73676B



B3003A



330011

Inverse Universe

The Inverse Universe completely reimagines the original color for something new.



E387A5



FF82AB



87D4E3



73676B



B3003A



330011

Previews

White Background



This preview shows how the Hex color E387A5 looks on a white background.

Color Contrast Check

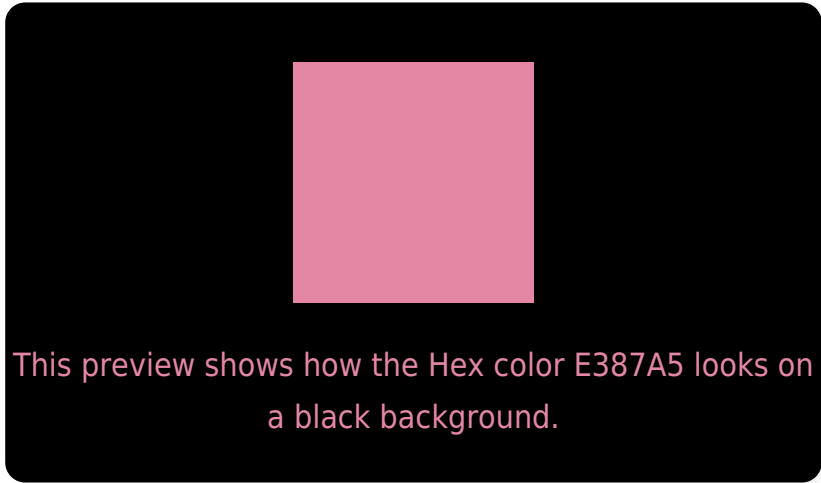
Large Text (above 18pt) WCAG AA × Fail

Any Text WCAG AA × Fail

Large Text (above 18pt) WCAG AAA × Fail

Any Text WCAG AAA × Fail

Black Background



Color Contrast Check

Large Text (above 18pt) WCAG AA ✓ Pass

Any Text WCAG AA ✓ Pass

Large Text (above 18pt) WCAG AAA ✓ Pass

Any Text WCAG AAA ✓ Pass

If you want to check with other color combinations, try the [Color Contrast Checker](#).

Hex E387A5 Background



This preview shows how black text looks on a background with the Hex color E387A5.




This preview shows how white text looks on a background with the Hex color E387A5.

Color Blindness Simulation

Color vision deficiency is a very complex topic, and I could not describe the different causes any better than Wikipedia does, so if you want to learn more, you should check out their [article about color blindness](#).

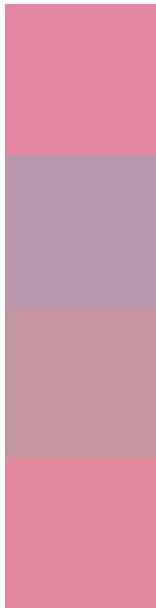
Dichromacy





Tritanopia
E18A94

Trichromacy



Original Color
E387A5

Protanomaly
B998AF

Deuteranomaly
C496A2

Tritanomaly
E2899A

Monochromacy



Original Color
E387A5

Achromatopsia
A6A6A6

Achromatomaly
BC9BA6

CSS Examples

Text

The CSS property to change the color of the text to Hex E387A5 is called "color". The color property can be set on classes, ids or directly on the HTML element.

This example shows how text in the color #E387A5 looks like.

```
.text, #text, p{  
    color:#E387A5  
}
```

If you want to add a text shadow in that color use the text-shadow property, you can generate a text shadow directly with our [CSS Text Shadow Generator](#).

Here you see how black text with a 4 pixel #E387A5 colored shadow looks like.

```
.shadow{ text-shadow: 4px 4px 2px #E387A5
}
```

Border

The CSS property to change the border of an element to Hex E387A5 is called "border". The border property can be set on classes, ids or directly on the HTML element.

This example shows the color as border, it can be applied via the CSS property "border" or "border-color".

```
.border, #border, table{ border:4px solid
#E387A5 }
```

If only the border color should be changed use the property `border-color`.

```
.border{ border-color:#E387A5 }
```

If you want to add a box shadow in that color use:

Here you see how a box with a 4 pixel #E387A5 colored shadow looks like.

```
.boxshadow{ -moz-box-shadow:4px 4px 4px  
4px #E387A5; -webkit-box-shadow:4px 4px  
4px 4px #E387A5; box-shadow:4px 4px 4px  
4px #E387A5 }
```

Background

The CSS property to change the background color of an element to Hex E387A5 is called "background". The background property can be set on classes, ids or directly on the HTML element.

```
.background, #background, body{  
background:#E387A5 }
```

If only the background color should be changed can be used:

```
.background{ background-color:#E387A5 }
```

This example shows the color as background, it is applied via the CSS property "background".

To optimize and compress your CSS code, you can use our [online CSS compressor and optimizer](#) based on csstidy. If you want to create a linear or radial gradient as background or border, check our [CSS Gradient Generator](#).

Hey! You found this booklet interesting? Support Converting Colors with the new Membership Option!

The pro membership hides all ads, plus gives you double the colors in the color bucket, and more awesome pro features!

[Learn more, Memberships starting at \\$2.50/m!](#)

**Follow me
on Twitter!**

@ConvertingColor