

# Converting Colors

Hex(E38992)

Have a look what the booklet for  
Hex(E38992) contains.

<b>Hex(E38992)</b> .....	3
<i><b>Conversions</b></i> .....	4
<i><b>Details</b></i> .....	6
<i><b>Harmonies</b></i> .....	11
<i><b>Previews</b></i> .....	23
<i><b>Color Blindness Simulation</b></i> .....	26
<i><b>CSS Examples</b></i> .....	29

# **Color**

**Hex(E38992)**

# Conversions

## Conversions Part 1

<b>Format</b>	<b>Color</b>
Hex	E38992
RGB	227, 137, 146
RGB Percent	89%, 54%, 57%
CMY	0.1098, 0.4627, 0.4275
CMYK	0.00, 0.40, 0.36, 0.11
HSL	354°, 62%, 71%
HSV	354°, 40%, 89%
XYZ	45.8125, 36.2975, 31.7857
YIQ	164.9360, 50.7510, 21.8790

# Conversions

## Conversions Part 2

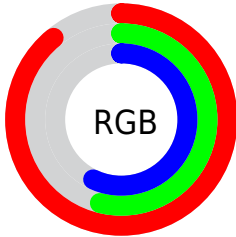
<b>Format</b>	<b>Color</b>
<b>R<sub>YB</sub></b>	227, 137, 146
Decimal	14911890
CIE <sub>Lab</sub>	66.75, 35.36, 9.99
CIE <sub>LCh</sub>	67, 36.747, 15.778
Yxy	36.2975, 0.4022, 0.3187
Android (android.graphics.Color)	4293101970 (0xFFE38992)
YUV	164.9360, -9.3354, 54.4301
Hunter-Lab	60.2474, 30.2995, 10.8927

# Details

The Hex color **E38992** is a light color, and the websafe version is hex **FF9999**. A complement of this color would be **89E3DA**, and the grayscale version is **A5A5A5**.

A 20% lighter version of the original color is **FFC0C8**, and **A95560** is the 20% darker color. If you saturate the color by 10%, you get **E3727E**, and if you desaturate by 10%, it is **E3A0A6**.

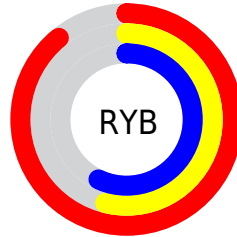
# Distribution



Red (89%)

Green (54%)

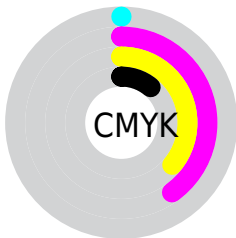
Blue (57%)



Red (89%)

Yellow (54%)

Blue (57%)

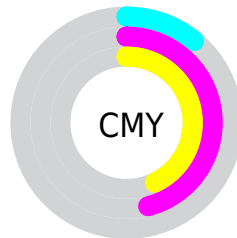


Cyan (0%)

Magenta (40%)

Yellow (36%)

Black (11%)



Cyan (11%)

Magenta (46%)

Yellow (43%)

# Brightness & Saturation Gradients

These gradients show how the Hex color E38992 changes by changing the brightness by 10 percent. The first figure shows a shift by +10% for each color and the second figure -10%.

Similar to the brightness gradients but the following saturation gradients show a change of the Hex color E38992 by changing the saturation by 10% instead.



 E38992

 E38992

FFFFFF

 C66F78

 FFC0C8

 A95560

 FFDCE4

 8D3C48

 FFF9FF

 712432

 56071D

 3D0002

 230001

 000000

 E38992

 E38992

 E3727E

 E3A0A6

 E35C69

 E3B6BB

 E34555

 E3CDCF

 E32E40

 E3E4E4

 E3182C

 E3FBF8

 E30117

 E3FFFF

 E30017

# Harmonies

## Analogous

The Analogous color harmony consists of three colors that are next to each other on the color wheel.



D98AB4



E38992



DB9074

# Triad

The Triadic color harmony groups three colors that are evenly spaced from another and form a triangle on the color wheel.



E38992



82AE73



56AAE2

# Complementary

The Complementary color scheme is a pair of colors which are on the opposite of each other on the color wheel.



E38992



89E3DA

# Split Complementary

Split-complementary colors differ from the complementary color scheme. The scheme consists of three colors, the original color and two neighbors of the complement color.



17B1D1



E38992



57B391

# Square

The Square scheme is like the rectangle color scheme, but the four colors are evenly spaced on the color wheel.



E38992



A7A662



24B4B3



8FA0E2

# Rectangle

The Rectangle color scheme consists of four colors that form a rectangle on the color wheel.



E38992



CE9767



24B4B3



41ADDE



# Sweetspot

The Sweet Spot groups the original color and five complimentary colors.



E38992



FFE0E3



DA89E3



806E6F



000000



808080



# Same Dimension

The Same Dimension uses a secret algorithm to generate beautiful new colors.



E38992



FF8591



E3AD89



736768



B30012



330005



# Inverse Universe

The Inverse Universe completely reimagines the original color for something new.



E38992



FF8591



89BFE3



736768



B30012

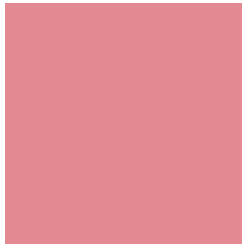


330005



# Previews

## White Background



This preview shows how the Hex color E38992 looks on a white background.

## Color Contrast Check

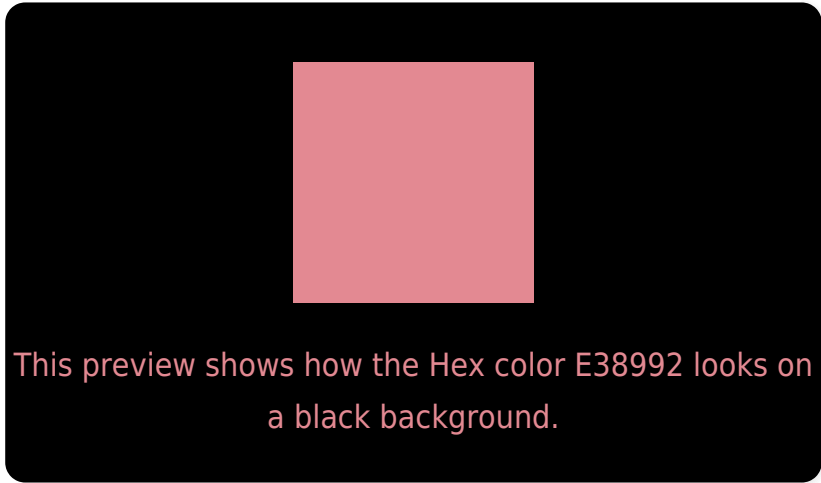
Large Text (above 18pt) WCAG AA × Fail

Any Text WCAG AA × Fail

Large Text (above 18pt) WCAG AAA × Fail

Any Text WCAG AAA × Fail

# Black Background



## Color Contrast Check

Large Text (above 18pt) WCAG AA ✓ Pass

Any Text WCAG AA ✓ Pass

Large Text (above 18pt) WCAG AAA ✓ Pass

Any Text WCAG AAA ✓ Pass

If you want to check with other color combinations, try the [Color Contrast Checker](#).



## Hex E38992 Background



This preview shows how black text looks on a background with the Hex color E38992.

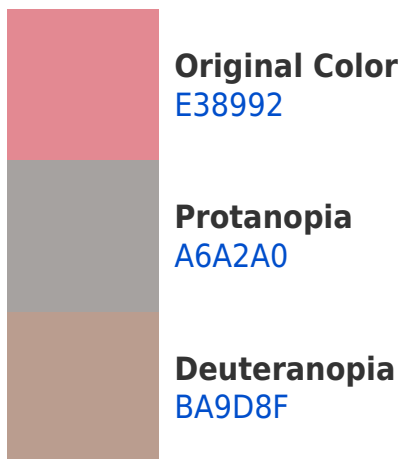


This preview shows how white text looks on a background with the Hex color E38992.

# Color Blindness Simulation

Color vision deficiency is a very complex topic, and I could not describe the different causes any better than Wikipedia does, so if you want to learn more, you should check out their [article about color blindness](#).

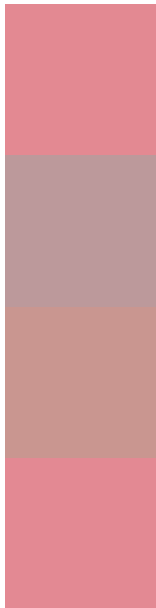
## Dichromacy





**Tritanopia**  
E38993

# Trichromacy



**Original Color**  
E38992

**Protanomaly**  
BC999B

**Deuteranomaly**  
C99690

**Tritanomaly**  
E38993

# Monochromacy



**Original Color**  
E38992

**Achromatopsia**  
A5A5A5

**Achromatomaly**  
BC9B9E

# CSS Examples

## Text

The CSS property to change the color of the text to Hex E38992 is called "color". The color property can be set on classes, ids or directly on the HTML element.

This example shows how text in the color #E38992 looks like.

```
.text, #text, p{  
    color:#E38992  
}
```

If you want to add a text shadow in that color use the text-shadow property, you can generate a text shadow directly with our [CSS Text Shadow Generator](#).

Here you see how black text with a 4 pixel #E38992 colored shadow looks like.

```
.shadow{ text-shadow: 4px 4px 2px #E38992
}
```

## Border

The CSS property to change the border of an element to Hex E38992 is called "border". The border property can be set on classes, ids or directly on the HTML element.

This example shows the color as border, it can be applied via the CSS property "border" or "border-color".

```
.border, #border, table{ border:4px solid
#E38992 }
```

If only the border color should be changed use the property `border-color`.

```
.border{ border-color:#E38992 }
```

If you want to add a box shadow in that color use:

Here you see how a box with a 4 pixel #E38992 colored shadow looks like.

```
.boxshadow{ -moz-box-shadow:4px 4px 4px  
4px #E38992; -webkit-box-shadow:4px 4px  
4px 4px #E38992; box-shadow:4px 4px 4px  
4px #E38992 }
```

# Background

The CSS property to change the background color of an element to Hex E38992 is called "background". The background property can be set on classes, ids or directly on the HTML element.

```
.background, #background, body{  
background:#E38992 }
```

If only the background color should be changed can be used:

```
.background{ background-color:#E38992 }
```

This example shows the color as background, it is applied via the CSS property "background".

To optimize and compress your CSS code, you can use our [online CSS compressor and optimizer](#) based on csstidy. If you want to create a linear or radial gradient as background or border, check our [CSS Gradient Generator](#).



Hey! You found this booklet interesting? Support Converting Colors with the new Membership Option!

The pro membership hides all ads, plus gives you double the colors in the color bucket, and more awesome pro features!

**[Learn more, Memberships starting at \\$2.50/m!](#)**

**Follow me  
on Twitter!**

@ConvertingColor