

Converting Colors

Hex(E3899A)

Have a look what the booklet for
Hex(E3899A) contains.

Hex(E3899A)	3
<i>Conversions</i>	4
<i>Details</i>	6
<i>Harmonies</i>	11
<i>Previews</i>	23
<i>Color Blindness Simulation</i>	26
<i>CSS Examples</i>	29

Color

Hex(E3899A)

Conversions

Conversions Part 1

Format	Color
Hex	E3899A
RGB	227, 137, 154
RGB Percent	89%, 54%, 60%
CMY	0.1098, 0.4627, 0.3961
CMYK	0.00, 0.40, 0.32, 0.11
HSL	349°, 62%, 71%
HSV	349°, 40%, 89%
XYZ	46.4569, 36.5553, 35.1792
YIQ	165.8480, 48.1830, 24.3670

Conversions

Conversions Part 2

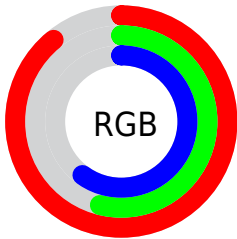
Format	Color
RYB	227, 137, 154
Decimal	14911898
CIELab	66.94, 36.35, 5.77
CIELCh	67, 36.805, 9.014
Yxy	36.5553, 0.3931, 0.3093
Android (android.graphics.Color)	4293101978 (0xFFE3899A)
YUV	165.8480, -5.8411, 53.6303
Hunter-Lab	60.4610, 31.3489, 7.8248

Details

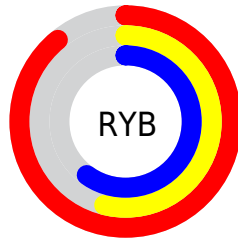
The Hex color **E3899A** is a light color, and the websafe version is hex **FF9999**. A complement of this color would be **89E3D2**, and the grayscale version is **A6A6A6**.

A 20% lighter version of the original color is **FFC0D0**, and **A95567** is the 20% darker color. If you saturate the color by 10%, you get **E37288**, and if you desaturate by 10%, it is **E3A0AC**.

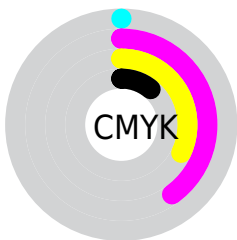
Distribution



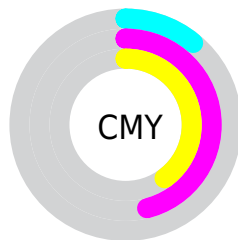
- Red (89%)
- Green (54%)
- Blue (60%)



- Red (89%)
- Yellow (54%)
- Blue (60%)



- Cyan (0%)
- Magenta (40%)
- Yellow (32%)
- Black (11%)



- Cyan (11%)
- Magenta (46%)
- Yellow (40%)

Brightness & Saturation Gradients

These gradients show how the Hex color E3899A changes by changing the brightness by 10 percent. The first figure shows a shift by +10% for each color and the second figure -10%.

Similar to the brightness gradients but the following saturation gradients show a change of the Hex color E3899A by changing the saturation by 10% instead.

 E3899A

 E3899A

FFFFFF

 C66F80

 FFC0D0

 A95567

 FFDCEB

 8D3C4F

 FFF9FF

 722338

 570623

 3D000D

 250001

 000000

 E3899A

 E3899A

 E37288

 E3A0AC

 E35C75

 E3B6BF

 E34563

 E3CDD1

 E32E50

 E3E4E4

 E3183E

 E3FBF6

 E3012C

 E3FFFF

 E3002B

Harmonies

Analogous

The Analogous color harmony consists of three colors that are next to each other on the color wheel.



D58CBB



E3899A



DF8E7B

Triad

The Triadic color harmony groups three colors that are evenly spaced from another and form a triangle on the color wheel.



E3899A



8BAD6E



48ADE0

Complementary

The Complementary color scheme is a pair of colors which are on the opposite of each other on the color wheel.



E3899A



89E3D2

Split Complementary

Split-complementary colors differ from the complementary color scheme. The scheme consists of three colors, the original color and two neighbors of the complement color.



0BB3CC



E3899A



62B38A

Square

The Square scheme is like the rectangle color scheme, but the four colors are evenly spaced on the color wheel.



E3899A



AFA461



31B5AC



83A3E4

Rectangle

The Rectangle color scheme consists of four colors that form a rectangle on the color wheel.



E3899A



D4956B



31B5AC



33AFDB

Sweetspot

The Sweet Spot groups the original color and five complimentary colors.



E3899A



FFE0E6



D189E3



806E71



000000



808080

Same Dimension

The Same Dimension uses a secret algorithm to generate beautiful new colors.



E3899A



FF859C



E3A489



736769



B30022



33000A

Inverse Universe

The Inverse Universe completely reimagines the original color for something new.



E3899A



FF859C



89C8E3



736769



B30022



33000A

Previews

White Background



This preview shows how the Hex color E3899A looks on a white background.

Color Contrast Check

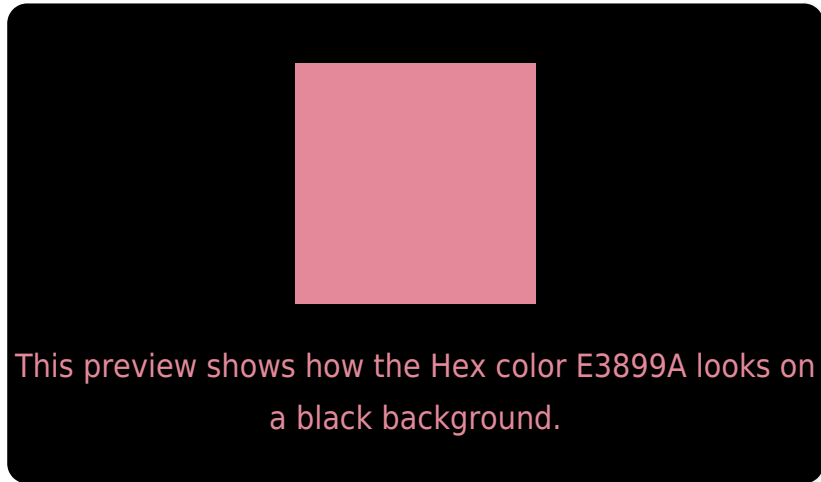
Large Text (above 18pt) WCAG AA × Fail

Any Text WCAG AA × Fail

Large Text (above 18pt) WCAG AAA × Fail

Any Text WCAG AAA × Fail

Black Background



Color Contrast Check

Large Text (above 18pt) WCAG AA ✓ Pass

Any Text WCAG AA ✓ Pass

Large Text (above 18pt) WCAG AAA ✓ Pass

Any Text WCAG AAA ✓ Pass

If you want to check with other color combinations, try the [Color Contrast Checker](#).

Hex E3899A Background



This preview shows how black text looks on a background with the Hex color E3899A.

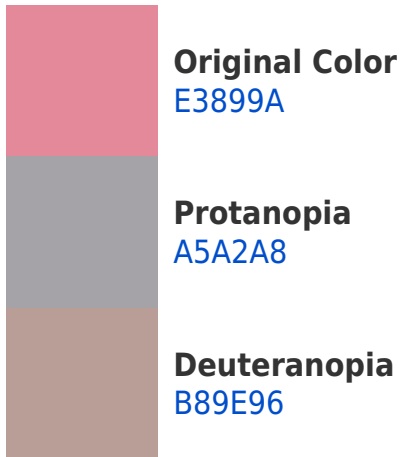


This preview shows how white text looks on a background with the Hex color E3899A.

Color Blindness Simulation

Color vision deficiency is a very complex topic, and I could not describe the different causes any better than Wikipedia does, so if you want to learn more, you should check out their [article about color blindness](#).

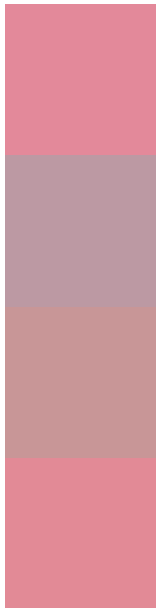
Dichromacy





Tritanopia
E28A94

Trichromacy



Original Color
E3899A

Protanomaly
BC99A3

Deuteranomaly
C89697

Tritanomaly
E28A96

Monochromacy



Original Color
E3899A

Achromatopsia
A6A6A6

Achromatomaly
BC9BA2

CSS Examples

Text

The CSS property to change the color of the text to Hex E3899A is called "color". The color property can be set on classes, ids or directly on the HTML element.

This example shows how text in the color #E3899A looks like.

```
.text, #text, p{  
    color:#E3899A  
}
```

If you want to add a text shadow in that color use the text-shadow property, you can generate a text shadow directly with our [CSS Text Shadow Generator](#).

Here you see how black text with a 4 pixel #E3899A colored shadow looks like.

```
.shadow{ text-shadow: 4px 4px 2px #E3899A
}
```

Border

The CSS property to change the border of an element to Hex E3899A is called "border". The border property can be set on classes, ids or directly on the HTML element.

This example shows the color as border, it can be applied via the CSS property "border" or "border-color".

```
.border, #border, table{ border:4px solid
#E3899A }
```

If only the border color should be changed use the property `border-color`.

```
.border{ border-color:#E3899A }
```

If you want to add a box shadow in that color use:

Here you see how a box with a 4 pixel #E3899A colored shadow looks like.

```
.boxshadow{ -moz-box-shadow:4px 4px 4px  
4px #E3899A; -webkit-box-shadow:4px 4px  
4px 4px #E3899A; box-shadow:4px 4px 4px  
4px #E3899A }
```

Background

The CSS property to change the background color of an element to Hex E3899A is called "background". The background property can be set on classes, ids or directly on the HTML element.

```
.background, #background, body{  
background:#E3899A }
```

If only the background color should be changed can be used:

```
.background{ background-color:#E3899A }
```

This example shows the color as background, it is applied via the CSS property "background".

To optimize and compress your CSS code, you can use our [online CSS compressor and optimizer](#) based on csstidy. If you want to create a linear or radial gradient as background or border, check our [CSS Gradient Generator](#).

Hey! You found this booklet interesting? Support Converting Colors with the new Membership Option!

The pro membership hides all ads, plus gives you double the colors in the color bucket, and more awesome pro features!

[Learn more, Memberships starting at \\$2.50/m!](#)

**Follow me
on Twitter!**

@ConvertingColor