

Converting Colors

Hex(E38EA4)

Have a look what the booklet for
Hex(E38EA4) contains.

Hex(E38EA4)	3
<i>Conversions</i>	4
<i>Details</i>	6
<i>Harmonies</i>	11
<i>Previews</i>	23
<i>Color Blindness Simulation</i>	26
<i>CSS Examples</i>	29

Color

Hex(E38EA4)

Conversions

Conversions Part 1

Format	Color
Hex	E38EA4
RGB	227, 142, 164
RGB Percent	89%, 56%, 64%
CMY	0.1098, 0.4431, 0.3569
CMYK	0.00, 0.37, 0.28, 0.11
HSL	344°, 60%, 72%
HSV	344°, 37%, 89%
XYZ	48.0524, 38.3572, 39.9930
YIQ	169.9230, 43.5980, 24.8620

Conversions

Conversions Part 2

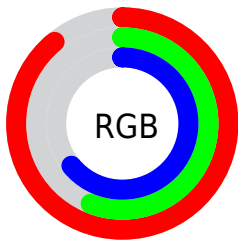
Format	Color
R_{YB}	227, 142, 164
Decimal	14913188
CIE _{Lab}	68.28, 35.03, 2.08
CIE _{LCh}	68, 35.090, 3.405
Yxy	38.3572, 0.3802, 0.3035
Android (android.graphics.Color)	4293103268 (0xFFE38EA4)
YUV	169.9230, -2.9200, 50.0565
Hunter-Lab	61.9332, 30.1104, 5.0671

Details

The Hex color **E38EA4** is a light color, and the websafe version is hex **FF9999**. A complement of this color would be **8EE3CD**, and the grayscale version is **AAAAAA**.

A 20% lighter version of the original color is **FFC5DB**, and **AA5A70** is the 20% darker color. If you saturate the color by 10%, you get **E37793**, and if you desaturate by 10%, it is **E3A5B5**.

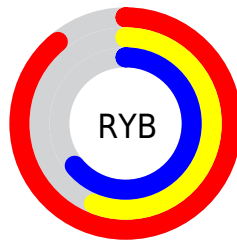
Distribution



Red (89%)

Green (56%)

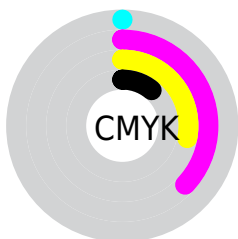
Blue (64%)



Red (89%)

Yellow (56%)

Blue (64%)

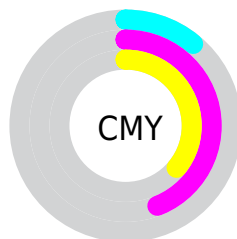


Cyan (0%)

Magenta (37%)

Yellow (28%)

Black (11%)



Cyan (11%)

Magenta (44%)

Yellow (36%)

Brightness & Saturation Gradients

These gradients show how the Hex color E38EA4 changes by changing the brightness by 10 percent. The first figure shows a shift by +10% for each color and the second figure -10%.

Similar to the brightness gradients but the following saturation gradients show a change of the Hex color E38EA4 by changing the saturation by 10% instead.

 E38EA4

 E38EA4

FFFFFF

 C6748A

 FFC5DB

 AA5A70

 FFE1F7

 8E4158

FFFEFF

 732941

 580E2B

 3E0017

 290001

 000000

 E38EA4

 E38EA4

 E37793

 E3A5B5

 E36182

 E3BBC6

 E34A72

 E3D2D6

 E33361

 E3E9E7

 E31D50

 E3FFF8

 E3063F

 E3FFFF

 E3003B

Harmonies

Analogous

The Analogous color harmony consists of three colors that are next to each other on the color wheel.



D293C3



E38EA4



E39185

Triad

The Triadic color harmony groups three colors that are evenly spaced from another and form a triangle on the color wheel.



E38EA4



96AF71



4BB1DE

Complementary

The Complementary color scheme is a pair of colors which are on the opposite of each other on the color wheel.



E38EA4



8EE3CD

Split Complementary

Split-complementary colors differ from the complementary color scheme. The scheme consists of three colors, the original color and two neighbors of the complement color.



2CB6C8



E38EA4



71B589

Square

The Square scheme is like the rectangle color scheme, but the four colors are evenly spaced on the color wheel.



E38EA4



B8A667



48B8A9



80A8E5

Rectangle

The Rectangle color scheme consists of four colors that form a rectangle on the color wheel.



E38EA4



DA9775



48B8A9



3CB3D8

Sweetspot

The Sweet Spot groups the original color and five complimentary colors.



E38EA4



FFE3EA



CC8EE3



806F73



000000



808080

Same Dimension

The Same Dimension uses a secret algorithm to generate beautiful new colors.



E38EA4



FF8CAA



E3A28E



73676A



B3002E



33000D

Inverse Universe

The Inverse Universe completely reimagines the original color for something new.



E38EA4



FF8CAA



8ECFE3



73676A



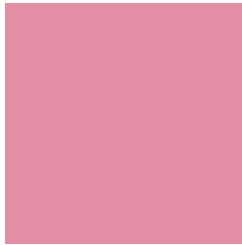
B3002E



33000D

Previews

White Background



This preview shows how the Hex color E38EA4 looks on a white background.

Color Contrast Check

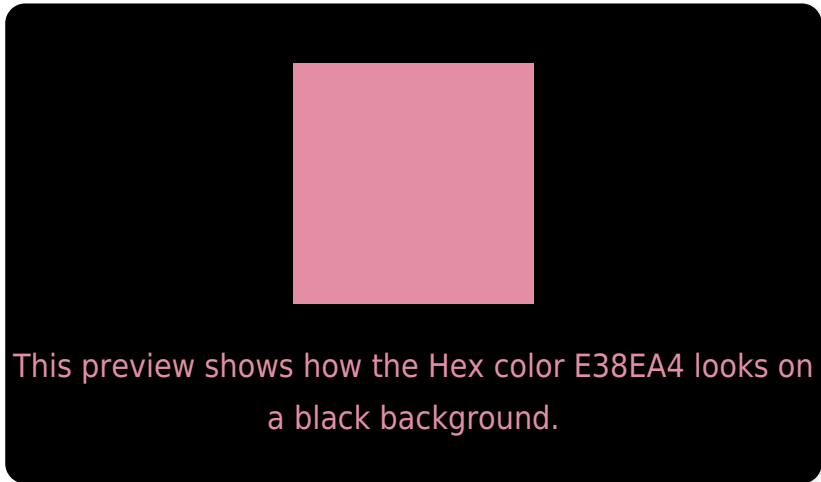
Large Text (above 18pt) WCAG AA × Fail

Any Text WCAG AA × Fail

Large Text (above 18pt) WCAG AAA × Fail

Any Text WCAG AAA × Fail

Black Background



Color Contrast Check

Large Text (above 18pt) WCAG AA ✓ Pass

Any Text WCAG AA ✓ Pass

Large Text (above 18pt) WCAG AAA ✓ Pass

Any Text WCAG AAA ✓ Pass

If you want to check with other color combinations, try the [Color Contrast Checker](#).

Hex E38EA4 Background



This preview shows how black text looks on a background with the Hex color E38EA4.

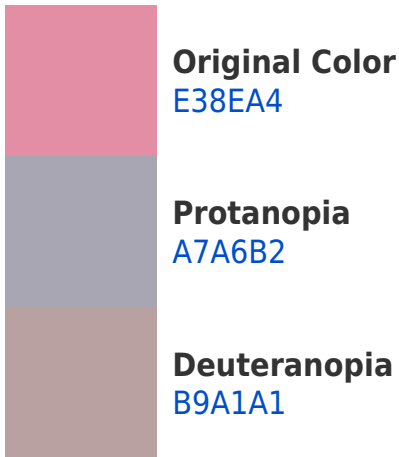


This preview shows how white text looks on a background with the Hex color E38EA4.

Color Blindness Simulation

Color vision deficiency is a very complex topic, and I could not describe the different causes any better than Wikipedia does, so if you want to learn more, you should check out their [article about color blindness](#).

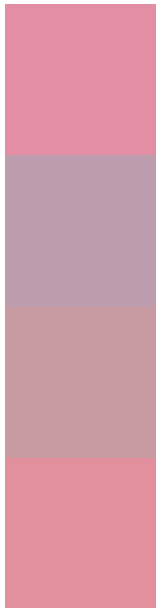
Dichromacy





Tritanopia
E2909A

Trichromacy



Original Color
E38EA4

Protanomaly
BD9DAD

Deuteranomaly
C89AA2

Tritanomaly
E28F9E

Monochromacy



Original Color
E38EA4

Achromatopsia
AAAAAA

Achromatomaly
BFA0A8

CSS Examples

Text

The CSS property to change the color of the text to Hex E38EA4 is called "color". The color property can be set on classes, ids or directly on the HTML element.

This example shows how text in the color #E38EA4 looks like.

```
.text, #text, p{  
    color:#E38EA4  
}
```

If you want to add a text shadow in that color use the text-shadow property, you can generate a text shadow directly with our [CSS Text Shadow Generator](#).

Here you see how black text with a 4 pixel #E38EA4 colored shadow looks like.

```
.shadow{ text-shadow: 4px 4px 2px #E38EA4
}
```

Border

The CSS property to change the border of an element to Hex E38EA4 is called "border". The border property can be set on classes, ids or directly on the HTML element.

This example shows the color as border, it can be applied via the CSS property "border" or "border-color".

```
.border, #border, table{ border:4px solid
#E38EA4 }
```

If only the border color should be changed use the property `border-color`.

```
.border{ border-color:#E38EA4 }
```

If you want to add a box shadow in that color use:

Here you see how a box with a 4 pixel #E38EA4 colored shadow looks like.

```
.boxshadow{ -moz-box-shadow:4px 4px 4px  
4px #E38EA4; -webkit-box-shadow:4px 4px  
4px 4px #E38EA4; box-shadow:4px 4px 4px  
4px #E38EA4 }
```

Background

The CSS property to change the background color of an element to Hex E38EA4 is called "background". The background property can be set on classes, ids or directly on the HTML element.

```
.background, #background, body{  
background:#E38EA4 }
```

If only the background color should be changed can be used:

```
.background{ background-color:#E38EA4 }
```

This example shows the color as background, it is applied via the CSS property "background".

To optimize and compress your CSS code, you can use our [online CSS compressor and optimizer](#) based on csstidy. If you want to create a linear or radial gradient as background or border, check our [CSS Gradient Generator](#).

Hey! You found this booklet interesting? Support Converting Colors with the new Membership Option!

The pro membership hides all ads, plus gives you double the colors in the color bucket, and more awesome pro features!

[Learn more, Memberships starting at \\$2.50/m!](#)

**Follow me
on Twitter!**

@ConvertingColor