

# Converting Colors

Hex(E3A3B0)

Have a look what the booklet for  
Hex(E3A3B0) contains.

<b>Hex(E3A3B0)</b> .....	3
<i><b>Conversions</b></i> .....	4
<i><b>Details</b></i> .....	6
<i><b>Harmonies</b></i> .....	11
<i><b>Previews</b></i> .....	23
<i><b>Color Blindness Simulation</b></i> .....	26
<i><b>CSS Examples</b></i> .....	29

# **Color**

**Hex(E3A3B0)**

# Conversions

## Conversions Part 1

Format	Color
Hex	E3A3B0
RGB	227, 163, 176
RGB Percent	89%, 64%, 69%
CMY	0.1098, 0.3608, 0.3098
CMYK	0.00, 0.28, 0.22, 0.11
HSL	348°, 53%, 76%
HSV	348°, 28%, 89%
XYZ	52.6122, 45.6599, 47.1146
YIQ	183.6180, 33.9710, 17.6110

# Conversions

## Conversions Part 2

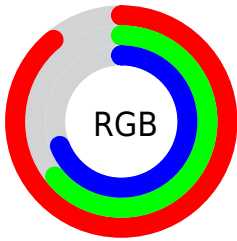
Format	Color
R <sub>Y</sub> B	227, 163, 176
Decimal	14918576
CIE Lab	73.32, 25.52, 2.73
CIE LCh	73, 25.665, 6.116
Yxy	45.6599, 0.3619, 0.3141
Android (android.graphics.Color)	4293108656 (0xFFE3A3B0)
YUV	183.6180, -3.7557, 38.0460
Hunter-Lab	67.5721, 20.7305, 5.9606

# Details

The Hex color **E3A3B0** is a light color, and the websafe version is hex **CC9999**. A complement of this color would be **A3E3D6**, and the grayscale version is **B8B8B8**.

A 20% lighter version of the original color is **FFDAE8**, and **AA6F7C** is the 20% darker color. If you saturate the color by 10%, you get **E38C9E**, and if you desaturate by 10%, it is **E3BAC2**.

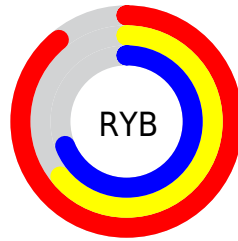
# Distribution



Red (89%)

Green (64%)

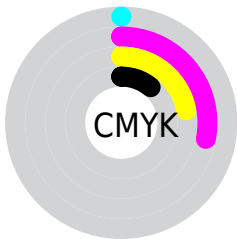
Blue (69%)



Red (89%)

Yellow (64%)

Blue (69%)

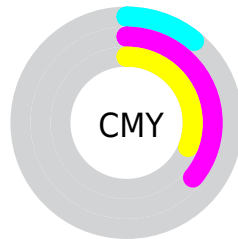


Cyan (0%)

Magenta (28%)

Yellow (22%)

Black (11%)



Cyan (11%)

Magenta (36%)

Yellow (31%)

# Brightness & Saturation Gradients

These gradients show how the Hex color E3A3B0 changes by changing the brightness by 10 percent. The first figure shows a shift by +10% for each color and the second figure -10%.

Similar to the brightness gradients but the following saturation gradients show a change of the Hex color E3A3B0 by changing the saturation by 10% instead.



 E3A3B0

 E3A3B0

FFFFFF

 C68895

 FFDAE8

 AA6F7C

 FFF7FF

 8F5663

 753E4B

 5B2734

 42101F

 2C0007

 000000

 E3A3B0

 E3A3B0

 E38C9E

 E3BAC2

 E3768C

 E3D0D4

 E35F7A

 E3E7E6

 E34868

 E3FEF8

 E33156

 E3FFFF

 E31B43

 E30431

 E3002E

# Harmonies

## Analogous

The Analogous color harmony consists of three colors that are next to each other on the color wheel.



D7A6C8



E3A3B0



E2A699

# Triad

The Triadic color harmony groups three colors that are evenly spaced from another and form a triangle on the color wheel.



E3A3B0



A7BB8E



80BCDE

# Complementary

The Complementary color scheme is a pair of colors which are on the opposite of each other on the color wheel.



E3A3B0



A3E3D6

# Split Complementary

Split-complementary colors differ from the complementary color scheme. The scheme consists of three colors, the original color and two neighbors of the complement color.



70C0CF



E3A3B0



8CC0A0

# Square

The Square scheme is like the rectangle color scheme, but the four colors are evenly spaced on the color wheel.



E3A3B0



C1B485



76C1B8



9EB5E2

# Rectangle

The Rectangle color scheme consists of four colors that form a rectangle on the color wheel.



E3A3B0



DBAA8E



76C1B8



78BDDA



# Sweetspot

The Sweet Spot groups the original color and five complimentary colors.



E3A3B0



FFEBEF



D5A3E3



807375



000000



808080



# Same Dimension

The Same Dimension uses a secret algorithm to generate beautiful new colors.



E3A3B0



FFA8BA



E3B5A3



73676A



B30024



33000A



# Inverse Universe

The Inverse Universe completely reimagines the original color for something new.



E3A3B0



FFA8BA



A3D1E3



73676A



B30024



33000A



# Previews

## White Background



This preview shows how the Hex color E3A3B0 looks on a white background.

## Color Contrast Check

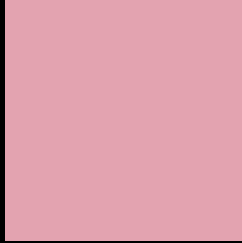
Large Text (above 18pt) WCAG AA × Fail

Any Text WCAG AA × Fail

Large Text (above 18pt) WCAG AAA × Fail

Any Text WCAG AAA × Fail

# Black Background



This preview shows how the Hex color E3A3B0 looks on a black background.

## Color Contrast Check

Large Text (above 18pt) WCAG AA ✓ Pass

Any Text WCAG AA ✓ Pass

Large Text (above 18pt) WCAG AAA ✓ Pass

Any Text WCAG AAA ✓ Pass

If you want to check with other color combinations, try the [Color Contrast Checker](#).



## Hex E3A3B0 Background



This preview shows how black text looks on a background with the Hex color E3A3B0.

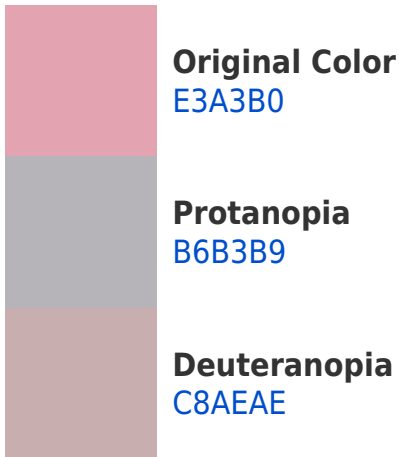


This preview shows how white text looks on a background with the Hex color E3A3B0.

# Color Blindness Simulation

Color vision deficiency is a very complex topic, and I could not describe the different causes any better than Wikipedia does, so if you want to learn more, you should check out their [article about color blindness](#).

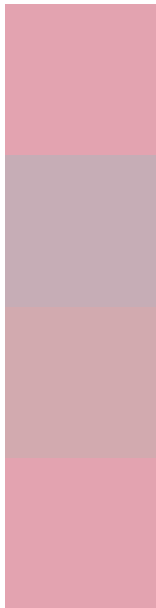
## Dichromacy





**Tritanopia**  
E3A3B0

# Trichromacy



**Original Color**  
E3A3B0

**Protanomaly**  
C6ADB6

**Deuteranomaly**  
D2AAAF

**Tritanomaly**  
E3A3B0

# Monochromacy



**Original Color**  
E3A3B0

**Achromatopsia**  
B8B8B8

**Achromatomaly**  
C8B0B5

# CSS Examples

## Text

The CSS property to change the color of the text to Hex E3A3B0 is called "color". The color property can be set on classes, ids or directly on the HTML element.

This example shows how text in the color #E3A3B0 looks like.

```
.text, #text, p{  
    color:#E3A3B0  
}
```

If you want to add a text shadow in that color use the text-shadow property, you can generate a text shadow directly with our [CSS Text Shadow Generator](#).

Here you see how black text with a 4 pixel #E3A3B0 colored shadow looks like.

```
.shadow{ text-shadow: 4px 4px 2px #E3A3B0
}
```

## Border

The CSS property to change the border of an element to Hex E3A3B0 is called "border". The border property can be set on classes, ids or directly on the HTML element.

This example shows the color as border, it can be applied via the CSS property "border" or "border-color".

```
.border, #border, table{ border:4px solid
#E3A3B0 }
```

If only the border color should be changed use the property `border-color`.

```
.border{ border-color:#E3A3B0 }
```

If you want to add a box shadow in that color use:

Here you see how a box with a 4 pixel #E3A3B0 colored shadow looks like.

```
.boxshadow{ -moz-box-shadow:4px 4px 4px  
4px #E3A3B0; -webkit-box-shadow:4px 4px  
4px 4px #E3A3B0; box-shadow:4px 4px 4px  
4px #E3A3B0 }
```

# Background

The CSS property to change the background color of an element to Hex E3A3B0 is called "background". The background property can be set on classes, ids or directly on the HTML element.

```
.background, #background, body{  
background:#E3A3B0 }
```

If only the background color should be changed can be used:

```
.background{ background-color:#E3A3B0 }
```

This example shows the color as background, it is applied via the CSS property "background".

To optimize and compress your CSS code, you can use our [online CSS compressor and optimizer](#) based on csstidy. If you want to create a linear or radial gradient as background or border, check our [CSS Gradient Generator](#).



Hey! You found this booklet interesting? Support Converting Colors with the new Membership Option!

The pro membership hides all ads, plus gives you double the colors in the color bucket, and more awesome pro features!

**[Learn more, Memberships starting at \\$2.50/m!](#)**

**Follow me  
on Twitter!**

@ConvertingColor