

Converting Colors

Hex(E3A4B1)

Have a look what the booklet for
Hex(E3A4B1) contains.

Hex(E3A4B1)	3
<i>Conversions</i>	4
<i>Details</i>	6
<i>Harmonies</i>	11
<i>Previews</i>	23
<i>Color Blindness Simulation</i>	26
<i>CSS Examples</i>	29

Color

Hex(E3A4B1)

Conversions

Conversions Part 1

Format	Color
Hex	E3A4B1
RGB	227, 164, 177
RGB Percent	89%, 64%, 69%
CMY	0.1098, 0.3569, 0.3059
CMYK	0.00, 0.28, 0.22, 0.11
HSL	348°, 53%, 77%
HSV	348°, 28%, 89%
XYZ	52.8898, 46.0561, 47.6971
YIQ	184.3190, 33.3750, 17.3990

Conversions

Conversions Part 2

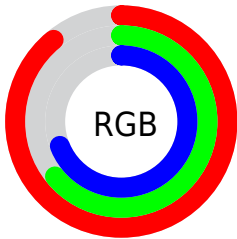
Format	Color
R _Y B	227, 164, 177
Decimal	14918833
CIE Lab	73.58, 25.13, 2.56
CIE LCh	74, 25.259, 5.812
Yxy	46.0561, 0.3607, 0.3141
Android (android.graphics.Color)	4293108913 (0xFFE3A4B1)
YUV	184.3190, -3.6083, 37.4312
Hunter-Lab	67.8647, 20.3495, 5.8347

Details

The Hex color **E3A4B1** is a light color, and the websafe version is hex **CC9999**. A complement of this color would be **A4E3D6**, and the grayscale version is **B8B8B8**.

A 20% lighter version of the original color is **FFDBE9**, and **AB707D** is the 20% darker color. If you saturate the color by 10%, you get **E38D9F**, and if you desaturate by 10%, it is **E3BBC3**.

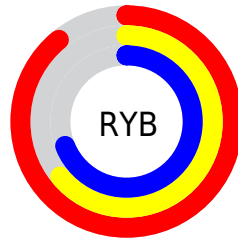
Distribution



Red (89%)

Green (64%)

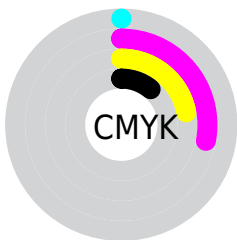
Blue (69%)



Red (89%)

Yellow (64%)

Blue (69%)

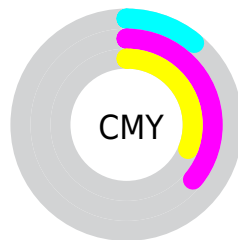


Cyan (0%)

Magenta (28%)

Yellow (22%)

Black (11%)



Cyan (11%)

Magenta (36%)

Yellow (31%)

Brightness & Saturation Gradients

These gradients show how the Hex color E3A4B1 changes by changing the brightness by 10 percent. The first figure shows a shift by +10% for each color and the second figure -10%.

Similar to the brightness gradients but the following saturation gradients show a change of the Hex color E3A4B1 by changing the saturation by 10% instead.

 E3A4B1

 E3A4B1

FFFFFF

 C68996

 FFDBE9

 AB707D

 FFF8FF

 8F5764

 753F4C

 5B2835

 421120

 2C0008

 000000

 E3A4B1

 E3A4B1

 E38D9F

 E3BBC3

 E3778D

 E3D1D5

 E3607B

 E3E8E7

 E34969

 E3FFF9

 E33357

 E3FFFF

 E31C45

 E30533

 E3002F

Harmonies

Analogous

The Analogous color harmony consists of three colors that are next to each other on the color wheel.



D7A7C8



E3A4B1



E2A79B

Triad

The Triadic color harmony groups three colors that are evenly spaced from another and form a triangle on the color wheel.



E3A4B1



A8BC8F



81BCDE

Complementary

The Complementary color scheme is a pair of colors which are on the opposite of each other on the color wheel.



E3A4B1



A4E3D6

Split Complementary

Split-complementary colors differ from the complementary color scheme. The scheme consists of three colors, the original color and two neighbors of the complement color.



72C1CF



E3A4B1



8EC0A1

Square

The Square scheme is like the rectangle color scheme, but the four colors are evenly spaced on the color wheel.



E3A4B1



C1B587



78C2B9



9FB5E2

Rectangle

The Rectangle color scheme consists of four colors that form a rectangle on the color wheel.



E3A4B1



DBAB8F



78C2B9



7ABEDA

Sweetspot

The Sweet Spot groups the original color and five complimentary colors.



E3A4B1



FFEBEF



D5A4E3



807375



000000



808080

Same Dimension

The Same Dimension uses a secret algorithm to generate beautiful new colors.



E3A4B1



FFABBC



E3B6A4



73676A



B30025



33000B

Inverse Universe

The Inverse Universe completely reimagines the original color for something new.



E3A4B1



FFABBC



A4D1E3



73676A



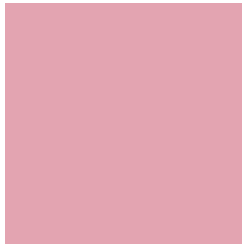
B30025



33000B

Previews

White Background



This preview shows how the Hex color E3A4B1 looks on a white background.

Color Contrast Check

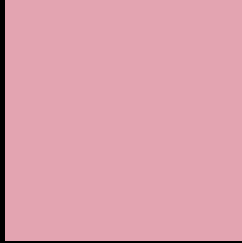
Large Text (above 18pt) WCAG AA × Fail

Any Text WCAG AA × Fail

Large Text (above 18pt) WCAG AAA × Fail

Any Text WCAG AAA × Fail

Black Background



This preview shows how the Hex color E3A4B1 looks on a black background.

Color Contrast Check

Large Text (above 18pt) WCAG AA ✓ Pass

Any Text WCAG AA ✓ Pass

Large Text (above 18pt) WCAG AAA ✓ Pass

Any Text WCAG AAA ✓ Pass

If you want to check with other color combinations, try the [Color Contrast Checker](#).

Hex E3A4B1 Background



This preview shows how black text looks on a background with the Hex color E3A4B1.

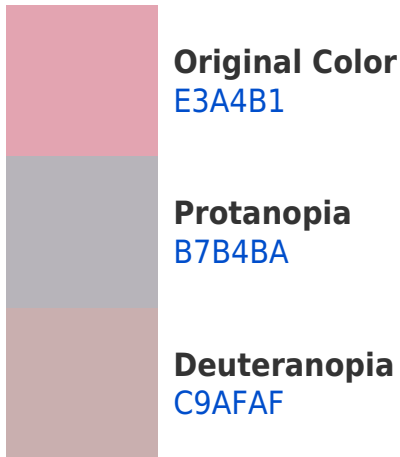


This preview shows how white text looks on a background with the Hex color E3A4B1.

Color Blindness Simulation

Color vision deficiency is a very complex topic, and I could not describe the different causes any better than Wikipedia does, so if you want to learn more, you should check out their [article about color blindness](#).

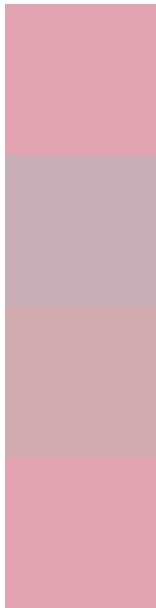
Dichromacy





Tritanopia
E3A4B1

Trichromacy



Original Color
E3A4B1

Protanomaly
C7AEB7

Deuteranomaly
D2ABB0

Tritanomaly
E3A4B1

Monochromacy



Original Color
E3A4B1

Achromatopsia
B8B8B8

Achromatomaly
C8B1B5

CSS Examples

Text

The CSS property to change the color of the text to Hex E3A4B1 is called "color". The color property can be set on classes, ids or directly on the HTML element.

This example shows how text in the color #E3A4B1 looks like.

```
.text, #text, p{  
    color:#E3A4B1  
}
```

If you want to add a text shadow in that color use the text-shadow property, you can generate a text shadow directly with our [CSS Text Shadow Generator](#).

Here you see how black text with a 4 pixel #E3A4B1 colored shadow looks like.

```
.shadow{ text-shadow: 4px 4px 2px #E3A4B1
}
```

Border

The CSS property to change the border of an element to Hex E3A4B1 is called "border". The border property can be set on classes, ids or directly on the HTML element.

This example shows the color as border, it can be applied via the CSS property "border" or "border-color".

```
.border, #border, table{ border:4px solid
#E3A4B1 }
```

If only the border color should be changed use the property `border-color`.

```
.border{ border-color:#E3A4B1 }
```

If you want to add a box shadow in that color use:

Here you see how a box with a 4 pixel #E3A4B1 colored shadow looks like.

```
.boxshadow{ -moz-box-shadow:4px 4px 4px  
4px #E3A4B1; -webkit-box-shadow:4px 4px  
4px 4px #E3A4B1; box-shadow:4px 4px 4px  
4px #E3A4B1 }
```

Background

The CSS property to change the background color of an element to Hex E3A4B1 is called "background". The background property can be set on classes, ids or directly on the HTML element.

```
.background, #background, body{  
background:#E3A4B1 }
```

If only the background color should be changed can be used:

```
.background{ background-color:#E3A4B1 }
```

This example shows the color as background, it is applied via the CSS property "background".

To optimize and compress your CSS code, you can use our [online CSS compressor and optimizer](#) based on csstidy. If you want to create a linear or radial gradient as background or border, check our [CSS Gradient Generator](#).

Hey! You found this booklet interesting? Support Converting Colors with the new Membership Option!

The pro membership hides all ads, plus gives you double the colors in the color bucket, and more awesome pro features!

[Learn more, Memberships starting at \\$2.50/m!](#)

**Follow me
on Twitter!**

@ConvertingColor