

Converting Colors

Hex(E3B3C1)

Have a look what the booklet for
Hex(E3B3C1) contains.

Hex(E3B3C1)	3
<i>Conversions</i>	4
<i>Details</i>	6
<i>Harmonies</i>	11
<i>Previews</i>	23
<i>Color Blindness Simulation</i>	26
<i>CSS Examples</i>	29

Color

Hex(E3B3C1)

Conversions

Conversions Part 1

Format	Color
Hex	E3B3C1
RGB	227, 179, 193
RGB Percent	89%, 70%, 76%
CMY	0.1098, 0.2980, 0.2431
CMYK	0.00, 0.21, 0.15, 0.11
HSL	342°, 46%, 80%
HSV	342°, 21%, 89%
XYZ	57.4243, 52.4213, 57.5438
YIQ	194.9480, 24.1140, 14.5300

Conversions

Conversions Part 2

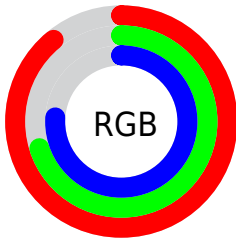
Format	Color
R _Y B	227, 179, 193
Decimal	14922689
CIE Lab	77.53, 19.53, -0.44
CIE LCh	78, 19.540, 358.717
Yxy	52.4213, 0.3431, 0.3132
Android (android.graphics.Color)	4293112769 (0xFFE3B3C1)
YUV	194.9480, -0.9604, 28.1096
Hunter-Lab	72.4026, 14.8683, 3.5596

Details

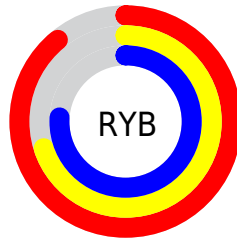
The Hex color **E3B3C1** is a light color, and the websafe version is hex **FFCCCC**. A complement of this color would be **B3E3D5**, and the grayscale version is **C3C3C3**.

A 20% lighter version of the original color is **FFEBF9**, and **AB7E8C** is the 20% darker color. If you saturate the color by 10%, you get **E39CB1**, and if you desaturate by 10%, it is **E3CAD1**.

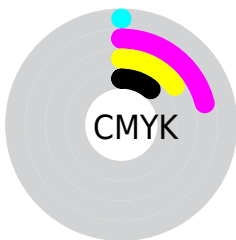
Distribution



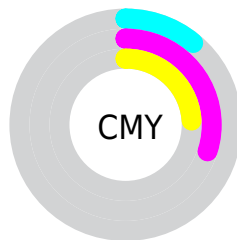
- Red (89%)
- Green (70%)
- Blue (76%)



- Red (89%)
- Yellow (70%)
- Blue (76%)



- Cyan (0%)
- Magenta (21%)
- Yellow (15%)
- Black (11%)



- Cyan (11%)
- Magenta (30%)
- Yellow (24%)

Brightness & Saturation Gradients

These gradients show how the Hex color E3B3C1 changes by changing the brightness by 10 percent. The first figure shows a shift by +10% for each color and the second figure -10%.

Similar to the brightness gradients but the following saturation gradients show a change of the Hex color E3B3C1 by changing the saturation by 10% instead.

 E3B3C1

 E3B3C1

FFFFFF

 C798A6

 FFEBF9

 AB7E8C

 906572

 764D5A

 5D3542

 441F2C

 2D0A18

 140000

 000000

 E3B3C1

 E3B3C1

 E39CB1

 E3CAD1

 E386A1

 E3E0E1

 E36F91

 E3F7F1

 E35881

 E3FFFF

 E34171

 E32B61

 E31450

 E30042

Harmonies

Analogous

The Analogous color harmony consists of three colors that are next to each other on the color wheel.



D7B6D3



E3B3C1



E5B4AF

Triad

The Triadic color harmony groups three colors that are evenly spaced from another and form a triangle on the color wheel.



E3B3C1



BBC4A0



97C7DE

Complementary

The Complementary color scheme is a pair of colors which are on the opposite of each other on the color wheel.



E3B3C1



B3E3D5

Split Complementary

Split-complementary colors differ from the complementary color scheme. The scheme consists of three colors, the original color and two neighbors of the complement color.



8FCAD0



E3B3C1



A6C8AC

Square

The Square scheme is like the rectangle color scheme, but the four colors are evenly spaced on the color wheel.



E3B3C1



CFBE9C



96CABE



AAC1E3

Rectangle

The Rectangle color scheme consists of four colors that form a rectangle on the color wheel.



E3B3C1



E1B6A5



96CABE



92C8DA

Sweetspot

The Sweet Spot groups the original color and five complimentary colors.



E3B3C1



FFF0F4



D5B3E3



807779



000000



808080

Same Dimension

The Same Dimension uses a secret algorithm to generate beautiful new colors.



E3B3C1



FFBFD2



E3BDB3



73676B



B30034



33000F

Inverse Universe

The Inverse Universe completely reimagines the original color for something new.



E3B3C1



FFBFD2



B3D9E3



73676B



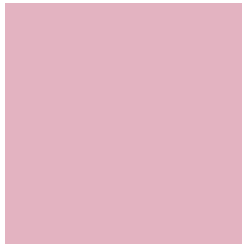
B30034



33000F

Previews

White Background



This preview shows how the Hex color E3B3C1 looks on a white background.

Color Contrast Check

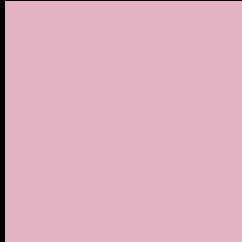
Large Text (above 18pt) WCAG AA × Fail

Any Text WCAG AA × Fail

Large Text (above 18pt) WCAG AAA × Fail

Any Text WCAG AAA × Fail

Black Background



This preview shows how the Hex color E3B3C1 looks on a black background.

Color Contrast Check

Large Text (above 18pt) WCAG AA ✓ Pass

Any Text WCAG AA ✓ Pass

Large Text (above 18pt) WCAG AAA ✓ Pass

Any Text WCAG AAA ✓ Pass

If you want to check with other color combinations, try the [Color Contrast Checker](#).

Hex E3B3C1 Background



This preview shows how black text looks on a background with the Hex color E3B3C1.

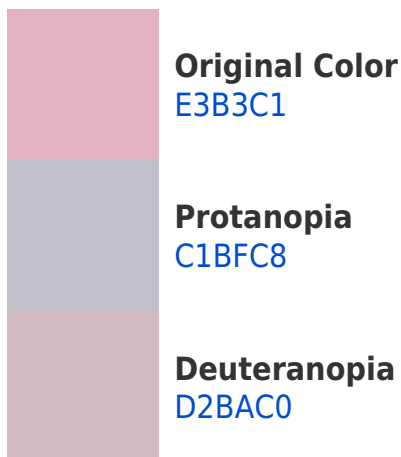


This preview shows how white text looks on a background with the Hex color E3B3C1.

Color Blindness Simulation

Color vision deficiency is a very complex topic, and I could not describe the different causes any better than Wikipedia does, so if you want to learn more, you should check out their [article about color blindness](#).

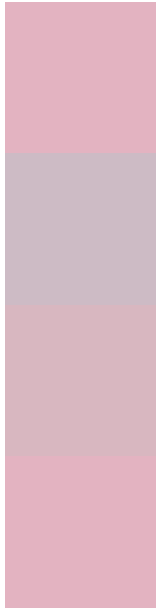
Dichromacy





Tritanopia
E3B3C1

Trichromacy



Original Color
E3B3C1

Protanomaly
CDBBC5

Deuteranomaly
D8B7C0

Tritanomaly
E3B3C1

Monochromacy



Original Color
E3B3C1

Achromatopsia
C3C3C3

Achromatomaly
CFBDC2

CSS Examples

Text

The CSS property to change the color of the text to Hex E3B3C1 is called "color". The color property can be set on classes, ids or directly on the HTML element.

This example shows how text in the color #E3B3C1 looks like.

```
.text, #text, p{  
    color:#E3B3C1  
}
```

If you want to add a text shadow in that color use the text-shadow property, you can generate a text shadow directly with our [CSS Text Shadow Generator](#).

Here you see how black text with a 4 pixel #E3B3C1 colored shadow looks like.

```
.shadow{ text-shadow: 4px 4px 2px #E3B3C1  
}
```

Border

The CSS property to change the border of an element to Hex E3B3C1 is called "border". The border property can be set on classes, ids or directly on the HTML element.

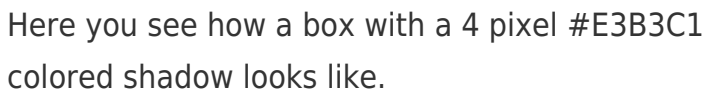
This example shows the color as border, it can be applied via the CSS property "border" or "border-color".

```
.border, #border, table{ border:4px solid  
#E3B3C1 }
```

If only the border color should be changed use the property `border-color`.

```
.border{ border-color:#E3B3C1 }
```

If you want to add a box shadow in that color use:



Here you see how a box with a 4 pixel #E3B3C1 colored shadow looks like.

```
.boxshadow{ -moz-box-shadow:4px 4px 4px  
4px #E3B3C1; -webkit-box-shadow:4px 4px  
4px 4px #E3B3C1; box-shadow:4px 4px 4px  
4px #E3B3C1 }
```

Background

The CSS property to change the background color of an element to Hex E3B3C1 is called "background". The background property can be set on classes, ids or directly on the HTML element.

```
.background, #background, body{  
background:#E3B3C1 }
```

If only the background color should be changed can be used:

```
.background{ background-color:#E3B3C1 }
```

This example shows the color as background, it is applied via the CSS property "background".

To optimize and compress your CSS code, you can use our [online CSS compressor and optimizer](#) based on csstidy. If you want to create a linear or radial gradient as background or border, check our [CSS Gradient Generator](#).

Hey! You found this booklet interesting? Support Converting Colors with the new Membership Option!

The pro membership hides all ads, plus gives you double the colors in the color bucket, and more awesome pro features!

[Learn more, Memberships starting at \\$2.50/m!](#)

**Follow me
on Twitter!**

@ConvertingColor