

Converting Colors

Hex(E3B4B4)

Have a look what the booklet for
Hex(E3B4B4) contains.

Hex(E3B4B4)	3
<i>Conversions</i>	4
<i>Details</i>	6
<i>Harmonies</i>	11
<i>Previews</i>	23
<i>Color Blindness Simulation</i>	26
<i>CSS Examples</i>	29

Color

Hex(E3B4B4)

Conversions

Conversions Part 1

Format	Color
Hex	E3B4B4
RGB	227, 180, 180
RGB Percent	89%, 71%, 71%
CMY	0.1098, 0.2941, 0.2941
CMYK	0.00, 0.21, 0.21, 0.11
HSL	0°, 46%, 80%
HSV	0°, 21%, 89%
XYZ	56.2380, 52.2687, 50.3048
YIQ	194.0530, 28.0120, 9.9640

Conversions

Conversions Part 2

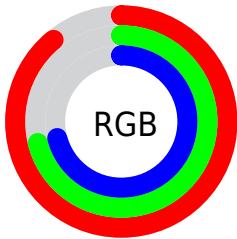
Format	Color
R _Y B	227, 180, 180
Decimal	14922932
CIE Lab	77.44, 17.00, 6.49
CIE LCh	77, 18.193, 20.907
Yxy	52.2687, 0.3541, 0.3291
Android (android.graphics.Color)	4293113012 (0xFFE3B4B4)
YUV	194.0530, -6.9281, 28.8945
Hunter-Lab	72.2971, 12.3306, 9.3536

Details

The Hex color **E3B4B4** is a light color, and the websafe version is hex **FFCCCC**. A complement of this color would be **B4E3E3**, and the grayscale version is **C2C2C2**.

A 20% lighter version of the original color is **FFECEC**, and **AB7F7F** is the 20% darker color. If you saturate the color by 10%, you get **E39D9D**, and if you desaturate by 10%, it is **E3CBCB**.

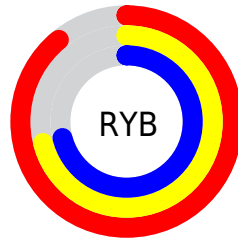
Distribution



Red (89%)

Green (71%)

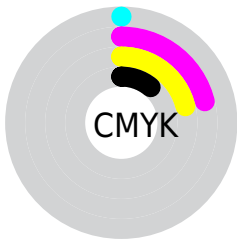
Blue (71%)



Red (89%)

Yellow (71%)

Blue (71%)

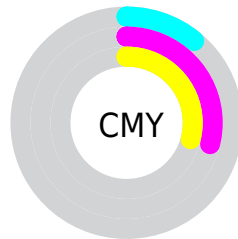


Cyan (0%)

Magenta (21%)

Yellow (21%)

Black (11%)



Cyan (11%)

Magenta (29%)

Yellow (29%)

Brightness & Saturation Gradients

These gradients show how the Hex color E3B4B4 changes by changing the brightness by 10 percent. The first figure shows a shift by +10% for each color and the second figure -10%.

Similar to the brightness gradients but the following saturation gradients show a change of the Hex color E3B4B4 by changing the saturation by 10% instead.

 E3B4B4

 E3B4B4

FFFFFF

 C79999

 FFECEC

 AB7F7F

 906666

 764E4E

 5C3738

 442122

 2C0C0C

 0F0000

 000000

 E3B4B4

 E3B4B4

 E39D9D

 E3CBCB

 E38787

 E3E1E1

 E37070

 E3F8F8

 E35959

 E3FFFF

 E34343

 E32C2C

 E31515

 E30000

Harmonies

Analogous

The Analogous color harmony consists of three colors that are next to each other on the color wheel.



DEB4C5



E3B4B4



DEB7A6

Triad

The Triadic color harmony groups three colors that are evenly spaced from another and form a triangle on the color wheel.



E3B4B4



ADC6AA



A6C2E0

Complementary

The Complementary color scheme is a pair of colors which are on the opposite of each other on the color wheel.



E3B4B4



B4E3E3

Split Complementary

Split-complementary colors differ from the complementary color scheme. The scheme consists of three colors, the original color and two neighbors of the complement color.



97C7D9



E3B4B4



9CC9B9

Square

The Square scheme is like the rectangle color scheme, but the four colors are evenly spaced on the color wheel.



E3B4B4



C0C2A0



93C9CB



BCBDDF

Rectangle

The Rectangle color scheme consists of four colors that form a rectangle on the color wheel.



E3B4B4



D7BBA0



93C9CB



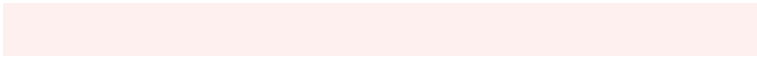
A0C4DF

Sweetspot

The Sweet Spot groups the original color and five complimentary colors.



E3B4B4



FFF0F0



E3B4E3



807777



000000



808080

Same Dimension

The Same Dimension uses a secret algorithm to generate beautiful new colors.



E3B4B4



FFBFBF



E3CCB4



736767



B30000



330000

Inverse Universe

The Inverse Universe completely reimagines the original color for something new.



B4E3E3



BFFFFFF



B4CCE3



677373



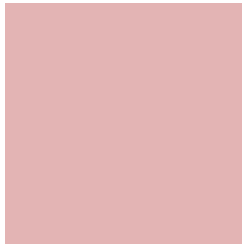
00B3B3



003333

Previews

White Background



This preview shows how the Hex color E3B4B4 looks on a white background.

Color Contrast Check

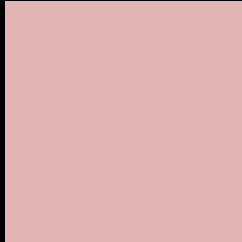
Large Text (above 18pt) WCAG AA × Fail

Any Text WCAG AA × Fail

Large Text (above 18pt) WCAG AAA × Fail

Any Text WCAG AAA × Fail

Black Background



This preview shows how the Hex color E3B4B4 looks on a black background.

Color Contrast Check

Large Text (above 18pt) WCAG AA ✓ Pass

Any Text WCAG AA ✓ Pass

Large Text (above 18pt) WCAG AAA ✓ Pass

Any Text WCAG AAA ✓ Pass

If you want to check with other color combinations, try the [Color Contrast Checker](#).

Hex E3B4B4 Background



This preview shows how black text looks on a background with the Hex color E3B4B4.



This preview shows how white text looks on a background with the Hex color E3B4B4.

Color Blindness Simulation

Color vision deficiency is a very complex topic, and I could not describe the different causes any better than Wikipedia does, so if you want to learn more, you should check out their [article about color blindness](#).

Dichromacy





Tritanopia
E4B2C0

Trichromacy



Original Color
E3B4B4

Protanomaly
CFBBB8

Deuteranomaly
DBB7B3

Tritanomaly
E4B3BC

Monochromacy



Original Color
E3B4B4

Achromatopsia
C2C2C2

Achromatomaly
CEBDBD

CSS Examples

Text

The CSS property to change the color of the text to Hex E3B4B4 is called "color". The color property can be set on classes, ids or directly on the HTML element.

This example shows how text in the color #E3B4B4 looks like.

```
.text, #text, p{  
    color:#E3B4B4  
}
```

If you want to add a text shadow in that color use the text-shadow property, you can generate a text shadow directly with our [CSS Text Shadow Generator](#).

Here you see how black text with a 4 pixel #E3B4B4 colored shadow looks like.

```
.shadow{ text-shadow: 4px 4px 2px #E3B4B4
}
```

Border

The CSS property to change the border of an element to Hex E3B4B4 is called "border". The border property can be set on classes, ids or directly on the HTML element.

This example shows the color as border, it can be applied via the CSS property "border" or "border-color".

```
.border, #border, table{ border:4px solid
#E3B4B4 }
```

If only the border color should be changed use the property `border-color`.

```
.border{ border-color:#E3B4B4 }
```

If you want to add a box shadow in that color use:

Here you see how a box with a 4 pixel #E3B4B4 colored shadow looks like.

```
.boxshadow{ -moz-box-shadow:4px 4px 4px  
4px #E3B4B4; -webkit-box-shadow:4px 4px  
4px 4px #E3B4B4; box-shadow:4px 4px 4px  
4px #E3B4B4 }
```

Background

The CSS property to change the background color of an element to Hex E3B4B4 is called "background". The background property can be set on classes, ids or directly on the HTML element.

```
.background, #background, body{  
background:#E3B4B4 }
```

If only the background color should be changed can be used:

```
.background{ background-color:#E3B4B4 }
```

This example shows the color as background, it is applied via the CSS property "background".

To optimize and compress your CSS code, you can use our [online CSS compressor and optimizer](#) based on csstidy. If you want to create a linear or radial gradient as background or border, check our [CSS Gradient Generator](#).

Hey! You found this booklet interesting? Support Converting Colors with the new Membership Option!

The pro membership hides all ads, plus gives you double the colors in the color bucket, and more awesome pro features!

[Learn more, Memberships starting at \\$2.50/m!](#)

**Follow me
on Twitter!**

@ConvertingColor