

Converting Colors

Hex(E3B6E3)

Have a look what the booklet for
Hex(E3B6E3) contains.

| | |
|--|----|
| Hex(E3B6E3) | 3 |
| <i>Conversions</i> | 4 |
| <i>Details</i> | 6 |
| <i>Harmonies</i> | 11 |
| <i>Previews</i> | 23 |
| <i>Color Blindness Simulation</i> | 26 |
| <i>CSS Examples</i> | 29 |

Color

Hex(E3B6E3)

Conversions

Conversions Part 1

| Format | Color |
|-------------|----------------------------|
| Hex | E3B6E3 |
| RGB | 227, 182, 227 |
| RGB Percent | 89%, 71%, 89% |
| CMY | 0.1098, 0.2863, 0.1098 |
| CMYK | 0.00, 0.20, 0.00, 0.11 |
| HSL | 300°, 45%, 80% |
| HSV | 300°, 20%, 89% |
| XYZ | 62.2716, 55.3328, 80.0713 |
| YIQ | 200.5850, 12.3750, 23.5350 |

Conversions

Conversions Part 2

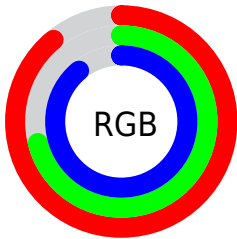
| Format | Color |
|-------------------------------------|-------------------------------|
| R_{YB} | 227, 182, 227 |
| Decimal | 14923491 |
| CIE _{Lab} | 79.23, 23.78, -16.33 |
| CIE _{LCh} | 79, 28.846, 325.521 |
| Yxy | 55.3328, 0.3150, 0.2799 |
| Android (android.graphics.Color) | 4293113571 (0xFFE3B6E3) |
| YUV | 200.5850, 13.0226, 23.1660 |
| Hunter-Lab | 74.3860, 19.2541, -11.7512 |

Details

The Hex color **E3B6E3** is a light color, and the websafe version is hex **FFCCFF**. A complement of this color would be **B6E3B6**, and the grayscale version is **C8C8C8**.

A 20% lighter version of the original color is **FFEEFF**, and **AB81AC** is the 20% darker color. If you saturate the color by 10%, you get **E39FE3**, and if you desaturate by 10%, it is **E3CDE3**.

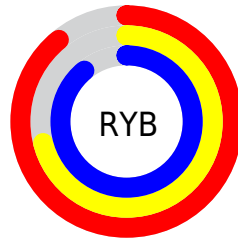
Distribution



Red (89%)

Green (71%)

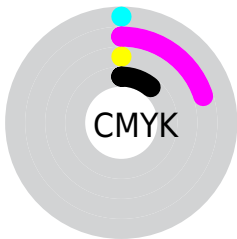
Blue (89%)



Red (89%)

Yellow (71%)

Blue (89%)

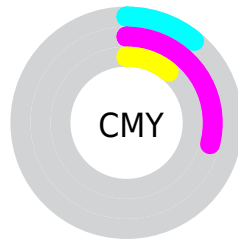


Cyan (0%)

Magenta (20%)

Yellow (0%)

Black (11%)



Cyan (11%)

Magenta (29%)

Yellow (11%)

Brightness & Saturation Gradients

These gradients show how the Hex color E3B6E3 changes by changing the brightness by 10 percent. The first figure shows a shift by +10% for each color and the second figure -10%.

Similar to the brightness gradients but the following saturation gradients show a change of the Hex color E3B6E3 by changing the saturation by 10% instead.

 E3B6E3

 E3B6E3

FFFFFF

 C79BC7

 FFEEFF

 AB81AC

 906791

 764F77

 5D375E

 452147

 2E0B30

 1B001C

 000000

 E3B6E3

 E3B6E3

 E39FE3

 E3CDE3

 E389E3

 E3E3E3

 E372E3

 E3FAE3

 E35BE3

 E3FFE3

 E345E3

 E32EE3

 E317E3

 E300E3

Harmonies

Analogous

The Analogous color harmony consists of three colors that are next to each other on the color wheel.



C3BFF5



E3B6E3



F6B1C9

Triad

The Triadic color harmony groups three colors that are evenly spaced from another and form a triangle on the color wheel.



E3B6E3



DCC18F



74D3DA

Complementary

The Complementary color scheme is a pair of colors which are on the opposite of each other on the color wheel.



E3B6E3



B6E3B6

Split Complementary

Split-complementary colors differ from the complementary color scheme. The scheme consists of three colors, the original color and two neighbors of the complement color.



84D3BF



E3B6E3



C0CA93

Square

The Square scheme is like the rectangle color scheme, but the four colors are evenly spaced on the color wheel.



E3B6E3



F1B899



A1D0A5



7ECFF0

Rectangle

The Rectangle color scheme consists of four colors that form a rectangle on the color wheel.



E3B6E3



FBB1B7



A1D0A5



77D3D2

Sweetspot

The Sweet Spot groups the original color and five complimentary colors.



E3B6E3



FFF0FF



B6B6E3



807780



000000



808080

Same Dimension

The Same Dimension uses a secret algorithm to generate beautiful new colors.



E3B6E3



FFC2FF



E3B6CC



736773



B300B3



330033

Inverse Universe

The Inverse Universe completely reimagines the original color for something new.



E3B6E3



FFC2FF



B6E3CC



736773



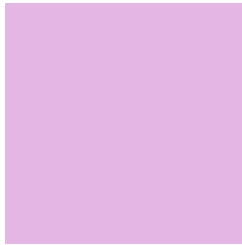
B300B3



330033

Previews

White Background



This preview shows how the Hex color E3B6E3 looks on a white background.

Color Contrast Check

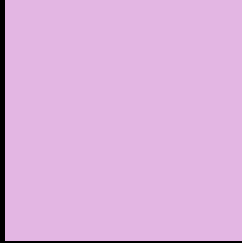
Large Text (above 18pt) WCAG AA × Fail

Any Text WCAG AA × Fail

Large Text (above 18pt) WCAG AAA × Fail

Any Text WCAG AAA × Fail

Black Background



This preview shows how the Hex color E3B6E3 looks on a black background.

Color Contrast Check

Large Text (above 18pt) WCAG AA ✓ Pass

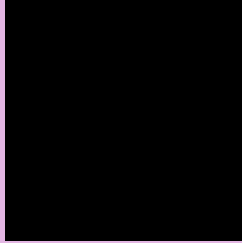
Any Text WCAG AA ✓ Pass

Large Text (above 18pt) WCAG AAA ✓ Pass

Any Text WCAG AAA ✓ Pass

If you want to check with other color combinations, try the [Color Contrast Checker](#).

Hex E3B6E3 Background



This preview shows how black text looks on a background with the Hex color E3B6E3.

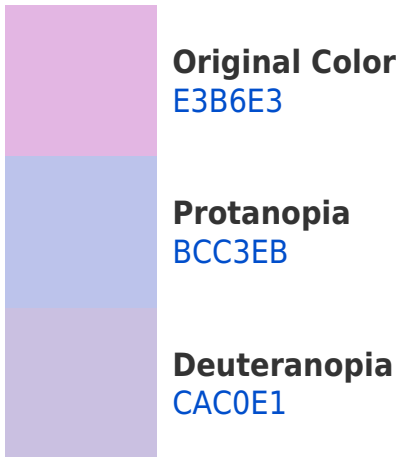


This preview shows how white text looks on a background with the Hex color E3B6E3.

Color Blindness Simulation

Color vision deficiency is a very complex topic, and I could not describe the different causes any better than Wikipedia does, so if you want to learn more, you should check out their [article about color blindness](#).

Dichromacy





Tritanopia
DFBBC9

Trichromacy



Original Color
E3B6E3



Protanomaly
CABEE8



Deuteranomaly
D3BCE2

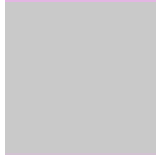


Tritanomaly
E0B9D2

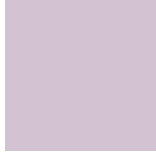
Monochromacy



Original Color
E3B6E3



Achromatopsia
C9C9C9



Achromatomaly
D2C2D2

CSS Examples

Text

The CSS property to change the color of the text to Hex E3B6E3 is called "color". The color property can be set on classes, ids or directly on the HTML element.

This example shows how text in the color #E3B6E3 looks like.

```
.text, #text, p{  
    color:#E3B6E3  
}
```

If you want to add a text shadow in that color use the text-shadow property, you can generate a text shadow directly with our [CSS Text Shadow Generator](#).

Here you see how black text with a 4 pixel #E3B6E3 colored shadow looks like.

```
.shadow{ text-shadow: 4px 4px 2px #E3B6E3
}
```

Border

The CSS property to change the border of an element to Hex E3B6E3 is called "border". The border property can be set on classes, ids or directly on the HTML element.

This example shows the color as border, it can be applied via the CSS property "border" or "border-color".

```
.border, #border, table{ border:4px solid
#E3B6E3 }
```

If only the border color should be changed use the property `border-color`.

```
.border{ border-color:#E3B6E3 }
```

If you want to add a box shadow in that color use:

Here you see how a box with a 4 pixel #E3B6E3 colored shadow looks like.

```
.boxshadow{ -moz-box-shadow:4px 4px 4px  
4px #E3B6E3; -webkit-box-shadow:4px 4px  
4px 4px #E3B6E3; box-shadow:4px 4px 4px  
4px #E3B6E3 }
```

Background

The CSS property to change the background color of an element to Hex E3B6E3 is called "background". The background property can be set on classes, ids or directly on the HTML element.

```
.background, #background, body{  
background:#E3B6E3 }
```

If only the background color should be changed can be used:

```
.background{ background-color:#E3B6E3 }
```

This example shows the color as background, it is applied via the CSS property "background".

To optimize and compress your CSS code, you can use our [online CSS compressor and optimizer](#) based on csstidy. If you want to create a linear or radial gradient as background or border, check our [CSS Gradient Generator](#).

Hey! You found this booklet interesting? Support Converting Colors with the new Membership Option!

The pro membership hides all ads, plus gives you double the colors in the color bucket, and more awesome pro features!

[Learn more, Memberships starting at \\$2.50/m!](#)

**Follow me
on Twitter!**

@ConvertingColor