

Converting Colors

Hex(E3B790)

Have a look what the booklet for
Hex(E3B790) contains.

Hex(E3B790)	3
<i>Conversions</i>	4
<i>Details</i>	6
<i>Harmonies</i>	11
<i>Previews</i>	23
<i>Color Blindness Simulation</i>	26
<i>CSS Examples</i>	29

Color

Hex(E3B790)

Conversions

Conversions Part 1

Format	Color
Hex	E3B790
RGB	227, 183, 144
RGB Percent	89%, 72%, 56%
CMY	0.1098, 0.2824, 0.4353
CMYK	0.00, 0.19, 0.37, 0.11
HSL	28°, 60%, 73%
HSV	28°, 37%, 89%
XYZ	53.6461, 52.2115, 33.6359
YIQ	191.7100, 38.7430, -2.8010

Conversions

Conversions Part 2

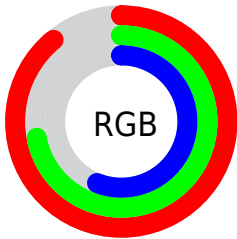
Format	Color
R _Y B	227, 218, 144
Decimal	14923664
CIE Lab	77.41, 10.59, 25.85
CIE LCh	77, 27.933, 67.716
Yxy	52.2115, 0.3846, 0.3743
Android (android.graphics.Color)	4293113744 (0xFFE3B790)
YUV	191.7100, -23.5210, 30.9493
Hunter-Lab	72.2575, 6.0729, 22.9807

Details

The Hex color **E3B790** is a light color, and the websafe version is hex **FFCC99**. A complement of this color would be **90BCE3**, and the grayscale version is **C0C0C0**.

A 20% lighter version of the original color is **FFEFC6**, and **AA825D** is the 20% darker color. If you saturate the color by 10%, you get **E3AB79**, and if you desaturate by 10%, it is **E3C3A7**.

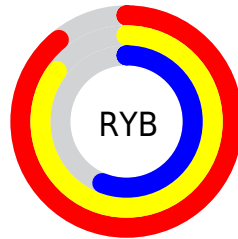
Distribution



Red (89%)

Green (72%)

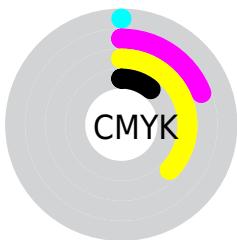
Blue (56%)



Red (89%)

Yellow (85%)

Blue (56%)

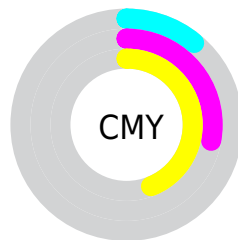


Cyan (0%)

Magenta (19%)

Yellow (37%)

Black (11%)



Cyan (11%)

Magenta (28%)

Yellow (44%)

Brightness & Saturation Gradients

These gradients show how the Hex color E3B790 changes by changing the brightness by 10 percent. The first figure shows a shift by +10% for each color and the second figure -10%.

Similar to the brightness gradients but the following saturation gradients show a change of the Hex color E3B790 by changing the saturation by 10% instead.

 E3B790

 E3B790

FFFFFF

 C69C76

 FFEFC6

 AA825D

 FFFFE2

 8F6945

 74512E

 5A3A19

 412400

 281000

 000000

 E3B790

 E3B790

 E3AB79

 E3C3A7

 E39F63

 E3CFBD

 E3934C

 E3DBD4

 E38735

 E3E7EB

 E37B1E

 E3F3FF

 E36F08

 E3FFFF

 E36B00

Harmonies

Analogous

The Analogous color harmony consists of three colors that are next to each other on the color wheel.



F1B0A1



E3B790



CBC08C

Triad

The Triadic color harmony groups three colors that are evenly spaced from another and form a triangle on the color wheel.



E3B790



79CEC5



CCB6E8

Complementary

The Complementary color scheme is a pair of colors which are on the opposite of each other on the color wheel.



E3B790



90BCE3

Split Complementary

Split-complementary colors differ from the complementary color scheme. The scheme consists of three colors, the original color and two neighbors of the complement color.



A9BFF2



E3B790



73CCDE

Square

The Square scheme is like the rectangle color scheme, but the four colors are evenly spaced on the color wheel.



E3B790



91CCAB



86C7EE



E6AFD3

Rectangle

The Rectangle color scheme consists of four colors that form a rectangle on the color wheel.



E3B790



B9C591



86C7EE



C1B9ED

Sweetspot

The Sweet Spot groups the original color and five complimentary colors.



E3B790



FFF0E3



E390BC



80776F



000000



808080

Same Dimension

The Same Dimension uses a secret algorithm to generate beautiful new colors.



E3B790



FFC48F



E3E090



736D67



B35400



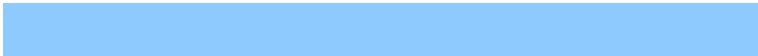
331800

Inverse Universe

The Inverse Universe completely reimagines the original color for something new.



90BCE3



8FCAFF



9093E3



676D73



005FB3



001B33

Previews

White Background



This preview shows how the Hex color E3B790 looks on a white background.

Color Contrast Check

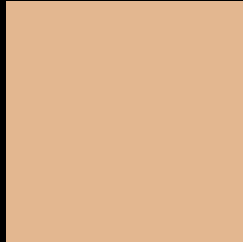
Large Text (above 18pt) WCAG AA × Fail

Any Text WCAG AA × Fail

Large Text (above 18pt) WCAG AAA × Fail

Any Text WCAG AAA × Fail

Black Background



This preview shows how the Hex color E3B790 looks on a black background.

Color Contrast Check

Large Text (above 18pt) WCAG AA ✓ Pass

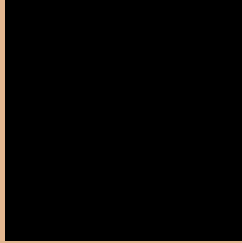
Any Text WCAG AA ✓ Pass

Large Text (above 18pt) WCAG AAA ✓ Pass

Any Text WCAG AAA ✓ Pass

If you want to check with other color combinations, try the [Color Contrast Checker](#).

Hex E3B790 Background



This preview shows how black text looks on a background with the Hex color E3B790.



This preview shows how white text looks on a background with the Hex color E3B790.

Color Blindness Simulation

Color vision deficiency is a very complex topic, and I could not describe the different causes any better than Wikipedia does, so if you want to learn more, you should check out their [article about color blindness](#).

Dichromacy





Tritanopia
E8B1BE

Trichromacy



Monochromacy



CSS Examples

Text

The CSS property to change the color of the text to Hex E3B790 is called "color". The color property can be set on classes, ids or directly on the HTML element.

This example shows how text in the color #E3B790 looks like.

```
.text, #text, p{  
    color:#E3B790  
}
```

If you want to add a text shadow in that color use the text-shadow property, you can generate a text shadow directly with our [CSS Text Shadow Generator](#).

Here you see how black text with a 4 pixel #E3B790 colored shadow looks like.

```
.shadow{ text-shadow: 4px 4px 2px #E3B790
}
```

Border

The CSS property to change the border of an element to Hex E3B790 is called "border". The border property can be set on classes, ids or directly on the HTML element.

This example shows the color as border, it can be applied via the CSS property "border" or "border-color".

```
.border, #border, table{ border:4px solid
#E3B790 }
```

If only the border color should be changed use the property `border-color`.

```
.border{ border-color:#E3B790 }
```

If you want to add a box shadow in that color use:

Here you see how a box with a 4 pixel #E3B790 colored shadow looks like.

```
.boxshadow{ -moz-box-shadow:4px 4px 4px  
4px #E3B790; -webkit-box-shadow:4px 4px  
4px 4px #E3B790; box-shadow:4px 4px 4px  
4px #E3B790 }
```

Background

The CSS property to change the background color of an element to Hex E3B790 is called "background". The background property can be set on classes, ids or directly on the HTML element.

```
.background, #background, body{  
background:#E3B790 }
```

If only the background color should be changed can be used:

```
.background{ background-color:#E3B790 }
```

This example shows the color as background, it is applied via the CSS property "background".

To optimize and compress your CSS code, you can use our [online CSS compressor and optimizer](#) based on csstidy. If you want to create a linear or radial gradient as background or border, check our [CSS Gradient Generator](#).

Hey! You found this booklet interesting? Support Converting Colors with the new Membership Option!

The pro membership hides all ads, plus gives you double the colors in the color bucket, and more awesome pro features!

[Learn more, Memberships starting at \\$2.50/m!](#)

**Follow me
on Twitter!**

@ConvertingColor