

Converting Colors

Hex(E3B7B7)

Have a look what the booklet for
Hex(E3B7B7) contains.

Hex(E3B7B7)	3
<i>Conversions</i>	4
<i>Details</i>	6
<i>Harmonies</i>	11
<i>Previews</i>	23
<i>Color Blindness Simulation</i>	26
<i>CSS Examples</i>	29

Color

Hex(E3B7B7)

Conversions

Conversions Part 1

Format	Color
Hex	E3B7B7
RGB	227, 183, 183
RGB Percent	89%, 72%, 72%
CMY	0.1098, 0.2824, 0.2824
CMYK	0.00, 0.19, 0.19, 0.11
HSL	0°, 44%, 80%
HSV	0°, 19%, 89%
XYZ	57.1593, 53.6168, 52.1362
YIQ	196.1560, 26.2240, 9.3280

Conversions

Conversions Part 2

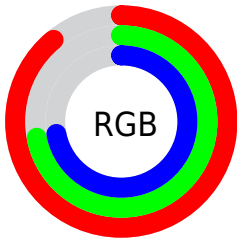
Format	Color
R_{YB}	227, 183, 183
Decimal	14923703
CIE _{Lab}	78.24, 15.84, 6.01
CIE _{LCh}	78, 16.944, 20.781
Yxy	53.6168, 0.3509, 0.3291
Android (android.graphics.Color)	4293113783 (0xFFE3B7B7)
YUV	196.1560, -6.4859, 27.0502
Hunter-Lab	73.2235, 11.1986, 9.0411

Details

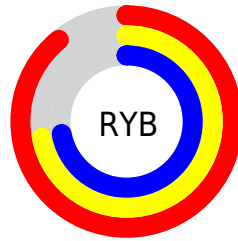
The Hex color **E3B7B7** is a light color, and the websafe version is hex **FFCCCC**. A complement of this color would be **B7E3E3**, and the grayscale version is **C4C4C4**.

A 20% lighter version of the original color is **FFEFEF**, and **AB8282** is the 20% darker color. If you saturate the color by 10%, you get **E3A0A0**, and if you desaturate by 10%, it is **E3CECE**.

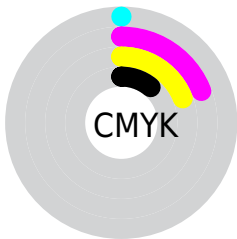
Distribution



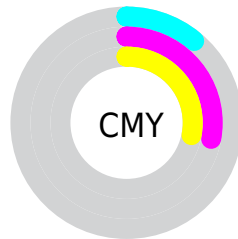
- Red (89%)
- Green (72%)
- Blue (72%)



- Red (89%)
- Yellow (72%)
- Blue (72%)



- Cyan (0%)
- Magenta (19%)
- Yellow (19%)
- Black (11%)



- Cyan (11%)
- Magenta (28%)
- Yellow (28%)

Brightness & Saturation Gradients

These gradients show how the Hex color E3B7B7 changes by changing the brightness by 10 percent. The first figure shows a shift by +10% for each color and the second figure -10%.

Similar to the brightness gradients but the following saturation gradients show a change of the Hex color E3B7B7 by changing the saturation by 10% instead.

 E3B7B7

 E3B7B7

FFFFFF

 C79C9C

 FFEFEF

 AB8282

 906969

 765051

 5D393A

 442324

 2D0E0F

 130000

 000000

 E3B7B7

 E3B7B7

 E3A0A0

 E3CECE

 E38A8A

 E3E4E4

 E37373

 E3FBFB

 E35C5C

 E3FFFF

 E34646

 E32F2F

 E31818

 E30101

 E30000

Harmonies

Analogous

The Analogous color harmony consists of three colors that are next to each other on the color wheel.



DEB7C7



E3B7B7



DFBAAA

Triad

The Triadic color harmony groups three colors that are evenly spaced from another and form a triangle on the color wheel.



E3B7B7



B0C8AD



AAC4E0

Complementary

The Complementary color scheme is a pair of colors which are on the opposite of each other on the color wheel.



E3B7B7



B7E3E3

Split Complementary

Split-complementary colors differ from the complementary color scheme. The scheme consists of three colors, the original color and two neighbors of the complement color.



9CC8D9



E3B7B7



A1CABC

Square

The Square scheme is like the rectangle color scheme, but the four colors are evenly spaced on the color wheel.



E3B7B7



C2C4A4



99CBCC



BEBFDF

Rectangle

The Rectangle color scheme consists of four colors that form a rectangle on the color wheel.



E3B7B7



D7BDA4



99CBCC



A5C6DF

Sweetspot

The Sweet Spot groups the original color and five complimentary colors.



E3B7B7



FFF0F0



E3B7E3



807777



000000



808080

Same Dimension

The Same Dimension uses a secret algorithm to generate beautiful new colors.



E3B7B7



FFC4C4



E3CDB7



736767



B30000



330000

Inverse Universe

The Inverse Universe completely reimagines the original color for something new.



B7E3E3



C4FFFF



B7CDE3



677373



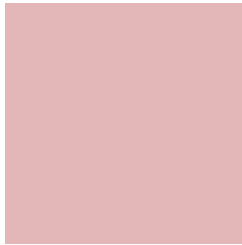
00B3B3



003333

Previews

White Background



This preview shows how the Hex color E3B7B7 looks on a white background.

Color Contrast Check

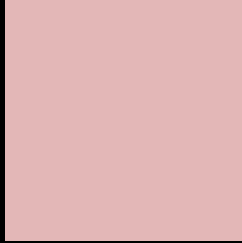
Large Text (above 18pt) WCAG AA × Fail

Any Text WCAG AA × Fail

Large Text (above 18pt) WCAG AAA × Fail

Any Text WCAG AAA × Fail

Black Background



This preview shows how the Hex color E3B7B7 looks on a black background.

Color Contrast Check

Large Text (above 18pt) WCAG AA ✓ Pass

Any Text WCAG AA ✓ Pass

Large Text (above 18pt) WCAG AAA ✓ Pass

Any Text WCAG AAA ✓ Pass

If you want to check with other color combinations, try the [Color Contrast Checker](#).

Hex E3B7B7 Background



This preview shows how black text looks on a background with the Hex color E3B7B7.



This preview shows how white text looks on a background with the Hex color E3B7B7.

Color Blindness Simulation

Color vision deficiency is a very complex topic, and I could not describe the different causes any better than Wikipedia does, so if you want to learn more, you should check out their [article about color blindness](#).

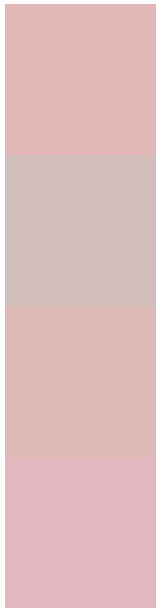
Dichromacy





Tritanopia
E4B5C3

Trichromacy



Original Color
E3B7B7

Protanomaly
D1BDBA

Deuteranomaly
DDBAB6

Tritanomaly
E4B6BF

Monochromacy



Original Color
E3B7B7

Achromatopsia
C4C4C4

Achromatomaly
CFBFBF

CSS Examples

Text

The CSS property to change the color of the text to Hex E3B7B7 is called "color". The color property can be set on classes, ids or directly on the HTML element.

This example shows how text in the color #E3B7B7 looks like.

```
.text, #text, p{  
    color:#E3B7B7  
}
```

If you want to add a text shadow in that color use the text-shadow property, you can generate a text shadow directly with our [CSS Text Shadow Generator](#).

Here you see how black text with a 4 pixel #E3B7B7 colored shadow looks like.

```
.shadow{ text-shadow: 4px 4px 2px #E3B7B7
}
```

Border

The CSS property to change the border of an element to Hex E3B7B7 is called "border". The border property can be set on classes, ids or directly on the HTML element.

This example shows the color as border, it can be applied via the CSS property "border" or "border-color".

```
.border, #border, table{ border:4px solid
#E3B7B7 }
```

If only the border color should be changed use the property `border-color`.

```
.border{ border-color:#E3B7B7 }
```

If you want to add a box shadow in that color use:

Here you see how a box with a 4 pixel #E3B7B7 colored shadow looks like.

```
.boxshadow{ -moz-box-shadow:4px 4px 4px  
4px #E3B7B7; -webkit-box-shadow:4px 4px  
4px 4px #E3B7B7; box-shadow:4px 4px 4px  
4px #E3B7B7 }
```

Background

The CSS property to change the background color of an element to Hex E3B7B7 is called "background". The background property can be set on classes, ids or directly on the HTML element.

```
.background, #background, body{  
background:#E3B7B7 }
```

If only the background color should be changed can be used:

```
.background{ background-color:#E3B7B7 }
```

This example shows the color as background, it is applied via the CSS property "background".

To optimize and compress your CSS code, you can use our [online CSS compressor and optimizer](#) based on csstidy. If you want to create a linear or radial gradient as background or border, check our [CSS Gradient Generator](#).

Hey! You found this booklet interesting? Support Converting Colors with the new Membership Option!

The pro membership hides all ads, plus gives you double the colors in the color bucket, and more awesome pro features!

[Learn more, Memberships starting at \\$2.50/m!](#)

**Follow me
on Twitter!**

@ConvertingColor