

Converting Colors

Hex(E3B89B)

Have a look what the booklet for
Hex(E3B89B) contains.

Hex(E3B89B)	3
<i>Conversions</i>	4
<i>Details</i>	6
<i>Harmonies</i>	11
<i>Previews</i>	23
<i>Color Blindness Simulation</i>	26
<i>CSS Examples</i>	29

Color

Hex(E3B89B)

Conversions

Conversions Part 1

Format	Color
Hex	E3B89B
RGB	227, 184, 155
RGB Percent	89%, 72%, 61%
CMY	0.1098, 0.2784, 0.3922
CMYK	0.00, 0.19, 0.32, 0.11
HSL	24°, 56%, 75%
HSV	24°, 32%, 89%
XYZ	54.7354, 52.9784, 38.3513
YIQ	193.5510, 34.9370, 0.0970

Conversions

Conversions Part 2

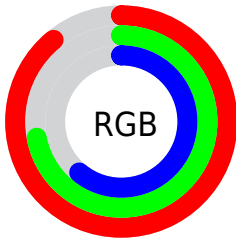
Format	Color
R _Y B	227, 204, 155
Decimal	14923931
CIE Lab	77.86, 11.41, 20.59
CIE LCh	78, 23.537, 61.007
Yxy	52.9784, 0.3747, 0.3627
Android (android.graphics.Color)	4293114011 (0xFFE3B89B)
YUV	193.5510, -19.0056, 29.3348
Hunter-Lab	72.7863, 6.8564, 19.7103

Details

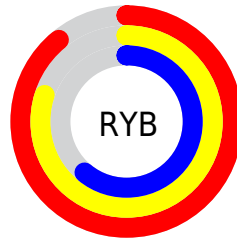
The Hex color **E3B89B** is a light color, and the websafe version is hex **FFCC99**. A complement of this color would be **9BC6E3**, and the grayscale version is **C2C2C2**.

A 20% lighter version of the original color is **FFF0D2**, and **AA8368** is the 20% darker color. If you saturate the color by 10%, you get **E3AA84**, and if you desaturate by 10%, it is **E3C6B2**.

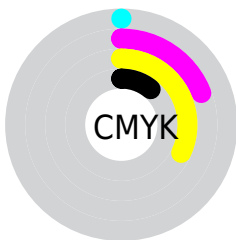
Distribution



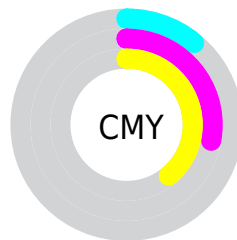
- Red (89%)
- Green (72%)
- Blue (61%)



- Red (89%)
- Yellow (80%)
- Blue (61%)



- Cyan (0%)
- Magenta (19%)
- Yellow (32%)
- Black (11%)



- Cyan (11%)
- Magenta (28%)
- Yellow (39%)

Brightness & Saturation Gradients

These gradients show how the Hex color E3B89B changes by changing the brightness by 10 percent. The first figure shows a shift by +10% for each color and the second figure -10%.

Similar to the brightness gradients but the following saturation gradients show a change of the Hex color E3B89B by changing the saturation by 10% instead.

 E3B89B

 E3B89B

FFFFFF

 C69D81

 FFF0D2

 AA8368

 FFFFEE

 8F6A4F

 755238

 5B3A22

 42250D

 2A1000

 060000

 000000

 E3B89B

 E3B89B

 E3AA84

 E3C6B2

 E39D6E

 E3D3C8

 E38F57

 E3E1DF

 E38240

 E3EEF6

 E37429

 E3FCFF

 E36713

 E3FFFF

 E35B00

Harmonies

Analogous

The Analogous color harmony consists of three colors that are next to each other on the color wheel.



EDB3AB



E3B89B



D0BF95

Triad

The Triadic color harmony groups three colors that are evenly spaced from another and form a triangle on the color wheel.



E3B89B



8BCDC0



C5BBE6

Complementary

The Complementary color scheme is a pair of colors which are on the opposite of each other on the color wheel.



E3B89B



9BC6E3

Split Complementary

Split-complementary colors differ from the complementary color scheme. The scheme consists of three colors, the original color and two neighbors of the complement color.



A8C2EC



E3B89B



83CCD6

Square

The Square scheme is like the rectangle color scheme, but the four colors are evenly spaced on the color wheel.



E3B89B



A0CBAB



8EC8E6



DDB4D6

Rectangle

The Rectangle color scheme consists of four colors that form a rectangle on the color wheel.



E3B89B



C1C498



8EC8E6



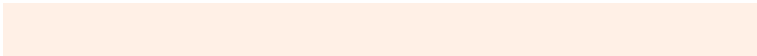
BCBDE9

Sweetspot

The Sweet Spot groups the original color and five complimentary colors.



E3B89B



FFF0E6



E39BC6



807670



000000



808080

Same Dimension

The Same Dimension uses a secret algorithm to generate beautiful new colors.



E3B89B



FFC59E



E3DC9B



736C67



B34800



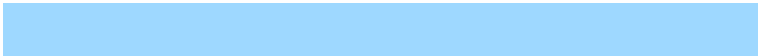
331500

Inverse Universe

The Inverse Universe completely reimagines the original color for something new.



9BC6E3



9ED8FF



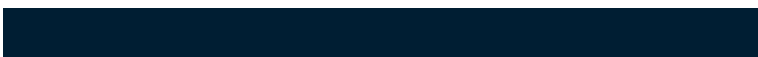
9BA2E3



676E73



006BB3



001E33

Previews

White Background



This preview shows how the Hex color E3B89B looks on a white background.

Color Contrast Check

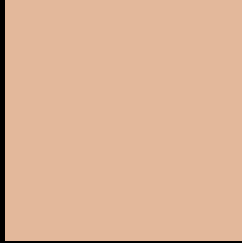
Large Text (above 18pt) WCAG AA × Fail

Any Text WCAG AA × Fail

Large Text (above 18pt) WCAG AAA × Fail

Any Text WCAG AAA × Fail

Black Background



This preview shows how the Hex color E3B89B looks on a black background.

Color Contrast Check

Large Text (above 18pt) WCAG AA ✓ Pass

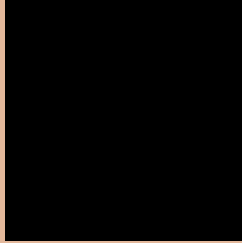
Any Text WCAG AA ✓ Pass

Large Text (above 18pt) WCAG AAA ✓ Pass

Any Text WCAG AAA ✓ Pass

If you want to check with other color combinations, try the [Color Contrast Checker](#).

Hex E3B89B Background



This preview shows how black text looks on a background with the Hex color E3B89B.



This preview shows how white text looks on a background with the Hex color E3B89B.

Color Blindness Simulation

Color vision deficiency is a very complex topic, and I could not describe the different causes any better than Wikipedia does, so if you want to learn more, you should check out their [article about color blindness](#).

Dichromacy





Tritanopia
E7B3C1

Trichromacy



Monochromacy



CSS Examples

Text

The CSS property to change the color of the text to Hex E3B89B is called "color". The color property can be set on classes, ids or directly on the HTML element.

This example shows how text in the color #E3B89B looks like.

```
.text, #text, p{  
    color:#E3B89B  
}
```

If you want to add a text shadow in that color use the text-shadow property, you can generate a text shadow directly with our [CSS Text Shadow Generator](#).

Here you see how black text with a 4 pixel #E3B89B colored shadow looks like.

```
.shadow{ text-shadow: 4px 4px 2px #E3B89B
}
```

Border

The CSS property to change the border of an element to Hex E3B89B is called "border". The border property can be set on classes, ids or directly on the HTML element.

This example shows the color as border, it can be applied via the CSS property "border" or "border-color".

```
.border, #border, table{ border:4px solid
#E3B89B }
```

If only the border color should be changed use the property `border-color`.

```
.border{ border-color:#E3B89B }
```

If you want to add a box shadow in that color use:

Here you see how a box with a 4 pixel #E3B89B colored shadow looks like.

```
.boxshadow{ -moz-box-shadow:4px 4px 4px  
4px #E3B89B; -webkit-box-shadow:4px 4px  
4px 4px #E3B89B; box-shadow:4px 4px 4px  
4px #E3B89B }
```

Background

The CSS property to change the background color of an element to Hex E3B89B is called "background". The background property can be set on classes, ids or directly on the HTML element.

```
.background, #background, body{  
background:#E3B89B }
```

If only the background color should be changed can be used:

```
.background{ background-color:#E3B89B }
```

This example shows the color as background, it is applied via the CSS property "background".

To optimize and compress your CSS code, you can use our [online CSS compressor and optimizer](#) based on csstidy. If you want to create a linear or radial gradient as background or border, check our [CSS Gradient Generator](#).

Hey! You found this booklet interesting? Support Converting Colors with the new Membership Option!

The pro membership hides all ads, plus gives you double the colors in the color bucket, and more awesome pro features!

[Learn more, Memberships starting at \\$2.50/m!](#)

**Follow me
on Twitter!**

@ConvertingColor