

Converting Colors

Hex(E3BAB8)

Have a look what the booklet for
Hex(E3BAB8) contains.

Hex(E3BAB8)	3
<i>Conversions</i>	4
<i>Details</i>	6
<i>Harmonies</i>	11
<i>Previews</i>	23
<i>Color Blindness Simulation</i>	26
<i>CSS Examples</i>	29

Color

Hex(E3BAB8)

Conversions

Conversions Part 1

Format	Color
Hex	E3BAB8
RGB	227, 186, 184
RGB Percent	89%, 73%, 72%
CMY	0.1098, 0.2706, 0.2784
CMYK	0.00, 0.18, 0.19, 0.11
HSL	3°, 43%, 81%
HSV	3°, 19%, 89%
XYZ	57.8892, 54.9094, 52.8949
YIQ	198.0310, 25.0780, 8.0700

Conversions

Conversions Part 2

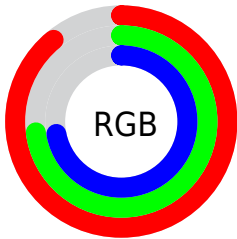
Format	Color
R _Y B	227, 186, 184
Decimal	14924472
CIE Lab	78.99, 14.39, 6.55
CIE LCh	79, 15.814, 24.476
Yxy	54.9094, 0.3494, 0.3314
Android (android.graphics.Color)	4293114552 (0xFFE3BAB8)
YUV	198.0310, -6.9173, 25.4058
Hunter-Lab	74.1009, 9.7715, 9.5481

Details

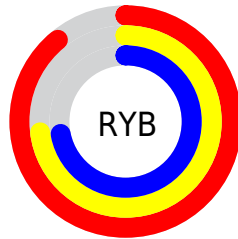
The Hex color **E3BAB8** is a light color, and the websafe version is hex **FFCCCC**. A complement of this color would be **B8E1E3**, and the grayscale version is **C6C6C6**.

A 20% lighter version of the original color is **FFF2F0**, and **AB8583** is the 20% darker color. If you saturate the color by 10%, you get **E3A4A1**, and if you desaturate by 10%, it is **E3D0CF**.

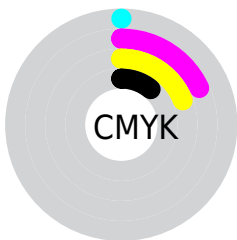
Distribution



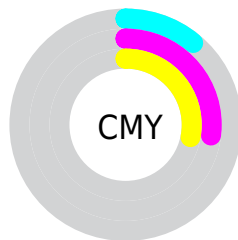
- Red (89%)
- Green (73%)
- Blue (72%)



- Red (89%)
- Yellow (73%)
- Blue (72%)



- Cyan (0%)
- Magenta (18%)
- Yellow (19%)
- Black (11%)



- Cyan (11%)
- Magenta (27%)
- Yellow (28%)

Brightness & Saturation Gradients

These gradients show how the Hex color E3BAB8 changes by changing the brightness by 10 percent. The first figure shows a shift by +10% for each color and the second figure -10%.

Similar to the brightness gradients but the following saturation gradients show a change of the Hex color E3BAB8 by changing the saturation by 10% instead.

 E3BAB8

 E3BAB8

FFFFFF

 C79F9D

 FFF2F0

 AB8583

 906B6A

 765352

 5D3C3B

 442625

 2D1110

 160000

 000000

 E3BAB8

 E3BAB8

 E3A4A1

 E3D0CF

 E38F8B

 E3E5E5

 E37974

 E3FBFC

 E3635D

 E3FFFF

 E34E46

 E33830

 E32219

 E30D02

 E30B00

Harmonies

Analogous

The Analogous color harmony consists of three colors that are next to each other on the color wheel.



E0BAC7



E3BAB8



DEBDAC

Triad

The Triadic color harmony groups three colors that are evenly spaced from another and form a triangle on the color wheel.



E3BAB8



B1CAB2



B0C6E0

Complementary

The Complementary color scheme is a pair of colors which are on the opposite of each other on the color wheel.



E3BAB8



B8E1E3

Split Complementary

Split-complementary colors differ from the complementary color scheme. The scheme consists of three colors, the original color and two neighbors of the complement color.



A2CADB



E3BAB8



A4CCC0

Square

The Square scheme is like the rectangle color scheme, but the four colors are evenly spaced on the color wheel.



E3BAB8



C2C6A9



9ECCCF



C3C1DE

Rectangle

The Rectangle color scheme consists of four colors that form a rectangle on the color wheel.



E3BAB8



D7C0A8



9ECCCF



ABC7DF

Sweetspot

The Sweet Spot groups the original color and five complimentary colors.



E3BAB8



FFF0F0



E3B8E2



807777



000000



808080

Same Dimension

The Same Dimension uses a secret algorithm to generate beautiful new colors.



E3BAB8



FFC7C4



E3CFB8



736867



B30800



330200

Inverse Universe

The Inverse Universe completely reimagines the original color for something new.



B8E1E3



C4FCFF



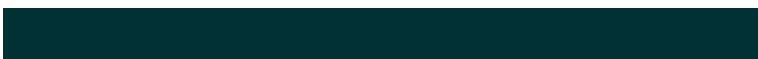
B8CCE3



677273



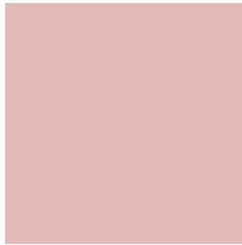
00AAB3



003133

Previews

White Background



This preview shows how the Hex color E3BAB8 looks on a white background.

Color Contrast Check

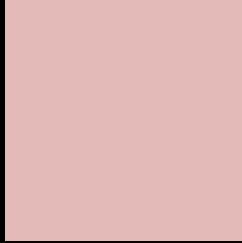
Large Text (above 18pt) WCAG AA × Fail

Any Text WCAG AA × Fail

Large Text (above 18pt) WCAG AAA × Fail

Any Text WCAG AAA × Fail

Black Background



This preview shows how the Hex color E3BAB8 looks on a black background.

Color Contrast Check

Large Text (above 18pt) WCAG AA ✓ Pass

Any Text WCAG AA ✓ Pass

Large Text (above 18pt) WCAG AAA ✓ Pass

Any Text WCAG AAA ✓ Pass

If you want to check with other color combinations, try the [Color Contrast Checker](#).

Hex E3BAB8 Background



This preview shows how black text looks on a background with the Hex color E3BAB8.



This preview shows how white text looks on a background with the Hex color E3BAB8.

Color Blindness Simulation

Color vision deficiency is a very complex topic, and I could not describe the different causes any better than Wikipedia does, so if you want to learn more, you should check out their [article about color blindness](#).

Dichromacy



Original Color
E3BAB8

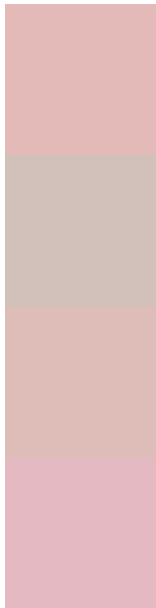
Protanopia
C9C3BD

Deuteranopia
DBBDB7



Tritanopia
E5B8C6

Trichromacy



Original Color
E3BAB8

Protanomaly
D2C0BB

Deuteranomaly
DEBCB7

Tritanomaly
E4B9C1

Monochromacy



Original Color
E3BAB8

Achromatopsia
C6C6C6

Achromatomaly
D1C2C1

CSS Examples

Text

The CSS property to change the color of the text to Hex E3BAB8 is called "color". The color property can be set on classes, ids or directly on the HTML element.

This example shows how text in the color #E3BAB8 looks like.

```
.text, #text, p{  
    color:#E3BAB8  
}
```

If you want to add a text shadow in that color use the text-shadow property, you can generate a text shadow directly with our [CSS Text Shadow Generator](#).

Here you see how black text with a 4 pixel #E3BAB8 colored shadow looks like.

```
.shadow{ text-shadow: 4px 4px 2px #E3BAB8  
}
```

Border

The CSS property to change the border of an element to Hex E3BAB8 is called "border". The border property can be set on classes, ids or directly on the HTML element.

This example shows the color as border, it can be applied via the CSS property "border" or "border-color".

```
.border, #border, table{ border:4px solid  
#E3BAB8 }
```

If only the border color should be changed use the property `border-color`.

```
.border{ border-color:#E3BAB8 }
```

If you want to add a box shadow in that color use:

Here you see how a box with a 4 pixel #E3BAB8 colored shadow looks like.

```
.boxshadow{ -moz-box-shadow:4px 4px 4px  
4px #E3BAB8; -webkit-box-shadow:4px 4px  
4px 4px #E3BAB8; box-shadow:4px 4px 4px  
4px #E3BAB8 }
```

Background

The CSS property to change the background color of an element to Hex E3BAB8 is called "background". The background property can be set on classes, ids or directly on the HTML element.

```
.background, #background, body{  
background:#E3BAB8 }
```

If only the background color should be changed can be used:

```
.background{ background-color:#E3BAB8 }
```

This example shows the color as background, it is applied via the CSS property "background".

To optimize and compress your CSS code, you can use our [online CSS compressor and optimizer](#) based on csstidy. If you want to create a linear or radial gradient as background or border, check our [CSS Gradient Generator](#).

Hey! You found this booklet interesting? Support Converting Colors with the new Membership Option!

The pro membership hides all ads, plus gives you double the colors in the color bucket, and more awesome pro features!

[Learn more, Memberships starting at \\$2.50/m!](#)

**Follow me
on Twitter!**

@ConvertingColor