

Converting Colors

Hex(E3BBBC)

Have a look what the booklet for
Hex(E3BBBC) contains.

Hex(E3BBBC)	3
<i>Conversions</i>	4
<i>Details</i>	6
<i>Harmonies</i>	11
<i>Previews</i>	23
<i>Color Blindness Simulation</i>	26
<i>CSS Examples</i>	29

Color

Hex(E3BBBC)

Conversions

Conversions Part 1

Format	Color
Hex	E3BBBC
RGB	227, 187, 188
RGB Percent	89%, 73%, 74%
CMY	0.1098, 0.2667, 0.2627
CMYK	0.00, 0.18, 0.17, 0.11
HSL	358°, 42%, 81%
HSV	358°, 18%, 89%
XYZ	58.5260, 55.5024, 55.2053
YIQ	199.0740, 23.5190, 8.7910

Conversions

Conversions Part 2

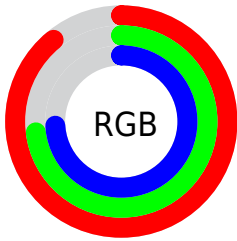
Format	Color
R _Y B	227, 187, 188
Decimal	14924732
CIE Lab	79.33, 14.47, 4.88
CIE LCh	79, 15.274, 18.643
Yxy	55.5024, 0.3458, 0.3280
Android (android.graphics.Color)	4293114812 (0xFFE3BBBC)
YUV	199.0740, -5.4595, 24.4911
Hunter-Lab	74.4999, 9.8520, 8.2153

Details

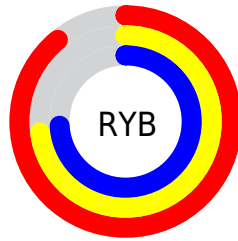
The Hex color **E3BBBC** is a light color, and the websafe version is hex **FFCCCC**. A complement of this color would be **BBE3E2**, and the grayscale version is **C7C7C7**.

A 20% lighter version of the original color is **FFF3F4**, and **AB8687** is the 20% darker color. If you saturate the color by 10%, you get **E3A4A6**, and if you desaturate by 10%, it is **E3D2D2**.

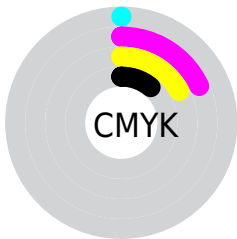
Distribution



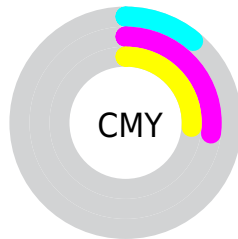
- Red (89%)
- Green (73%)
- Blue (74%)



- Red (89%)
- Yellow (73%)
- Blue (74%)



- Cyan (0%)
- Magenta (18%)
- Yellow (17%)
- Black (11%)



- Cyan (11%)
- Magenta (27%)
- Yellow (26%)

Brightness & Saturation Gradients

These gradients show how the Hex color E3BBBC changes by changing the brightness by 10 percent. The first figure shows a shift by +10% for each color and the second figure -10%.

Similar to the brightness gradients but the following saturation gradients show a change of the Hex color E3BBBC by changing the saturation by 10% instead.

 E3BBBC

 E3BBBC

FFFFFF

 C7A0A1

 FFF3F4

 AB8687

 906C6E

 765455

 5D3D3E

 452628

 2D1214

 180001

 000000

 E3BBBC

 E3BBBC

 E3A4A6

 E3D2D2

 E38E90

 E3E8E8

 E3777A

 E3FFFE

 E36063

 E3FFFF

 E34A4D

 E33337

 E31C21

 E3050B

 E30006

Harmonies

Analogous

The Analogous color harmony consists of three colors that are next to each other on the color wheel.



DEBBCB



E3BBBC



E0BDB0

Triad

The Triadic color harmony groups three colors that are evenly spaced from another and form a triangle on the color wheel.



E3BBBC



B6CAB1



AFC7E0

Complementary

The Complementary color scheme is a pair of colors which are on the opposite of each other on the color wheel.



E3BBBC



BBE3E2

Split Complementary

Split-complementary colors differ from the complementary color scheme. The scheme consists of three colors, the original color and two neighbors of the complement color.



A3CBD9



E3BBBC



A8CDBE

Square

The Square scheme is like the rectangle color scheme, but the four colors are evenly spaced on the color wheel.



E3BBBC



C6C6AA



A0CDCD



C0C3DF

Rectangle

The Rectangle color scheme consists of four colors that form a rectangle on the color wheel.



E3BBBC



D9C0AA



A0CDCD



AAC9DF

Sweetspot

The Sweet Spot groups the original color and five complimentary colors.



E3BBBC



FFF2F3



E2BBE3



807878



000000



808080

Same Dimension

The Same Dimension uses a secret algorithm to generate beautiful new colors.



E3BBBC



FFC9CB



E3CEBB



736768



B30004



330001

Inverse Universe

The Inverse Universe completely reimagines the original color for something new.



E3BBBC



FFC9CB



BBD0E3



736768



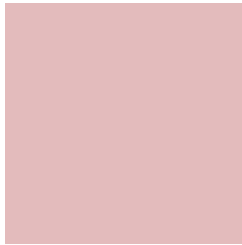
B30004



330001

Previews

White Background



This preview shows how the Hex color E3BBBC looks on a white background.

Color Contrast Check

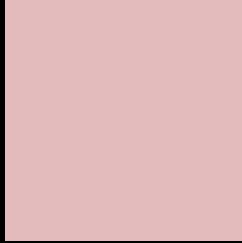
Large Text (above 18pt) WCAG AA × Fail

Any Text WCAG AA × Fail

Large Text (above 18pt) WCAG AAA × Fail

Any Text WCAG AAA × Fail

Black Background



This preview shows how the Hex color E3BBBC looks on a black background.

Color Contrast Check

Large Text (above 18pt) WCAG AA ✓ Pass

Any Text WCAG AA ✓ Pass

Large Text (above 18pt) WCAG AAA ✓ Pass

Any Text WCAG AAA ✓ Pass

If you want to check with other color combinations, try the [Color Contrast Checker](#).

Hex E3BBBC Background



This preview shows how black text looks on a background with the Hex color E3BBBC.

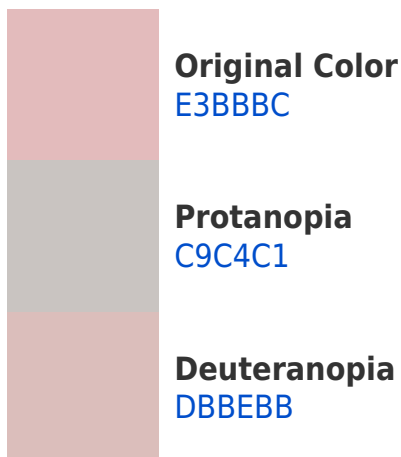


This preview shows how white text looks on a background with the Hex color E3BBBC.

Color Blindness Simulation

Color vision deficiency is a very complex topic, and I could not describe the different causes any better than Wikipedia does, so if you want to learn more, you should check out their [article about color blindness](#).

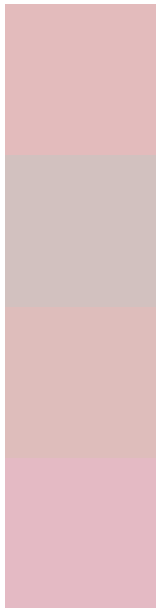
Dichromacy





Tritanopia
E4B9C8

Trichromacy



Original Color
E3BBBC

Protanomaly
D2C1BF

Deuteranomaly
DEBDBB

Tritanomaly
E4BAC4

Monochromacy



Original Color
E3BBBC

Achromatopsia
C7C7C7

Achromatomaly
D1C3C3

CSS Examples

Text

The CSS property to change the color of the text to Hex E3BBBC is called "color". The color property can be set on classes, ids or directly on the HTML element.

This example shows how text in the color #E3BBBC looks like.

```
.text, #text, p{  
    color:#E3BBBC  
}
```

If you want to add a text shadow in that color use the text-shadow property, you can generate a text shadow directly with our [CSS Text Shadow Generator](#).

Here you see how black text with a 4 pixel #E3BBBC colored shadow looks like.

```
.shadow{ text-shadow: 4px 4px 2px #E3BBBC  
}
```

Border

The CSS property to change the border of an element to Hex E3BBBC is called "border". The border property can be set on classes, ids or directly on the HTML element.

This example shows the color as border, it can be applied via the CSS property "border" or "border-color".

```
.border, #border, table{ border:4px solid  
#E3BBBC }
```

If only the border color should be changed use the property `border-color`.

```
.border{ border-color:#E3BBBC }
```

If you want to add a box shadow in that color use:

Here you see how a box with a 4 pixel #E3BBBC colored shadow looks like.

```
.boxshadow{ -moz-box-shadow:4px 4px 4px  
4px #E3BBBC; -webkit-box-shadow:4px 4px  
4px 4px #E3BBBC; box-shadow:4px 4px 4px  
4px #E3BBBC }
```

Background

The CSS property to change the background color of an element to Hex E3BBBC is called "background". The background property can be set on classes, ids or directly on the HTML element.

```
.background, #background, body{  
background:#E3BBBC }
```

If only the background color should be changed can be used:

```
.background{ background-color:#E3BBBC }
```

This example shows the color as background, it is applied via the CSS property "background".

To optimize and compress your CSS code, you can use our [online CSS compressor and optimizer](#) based on csstidy. If you want to create a linear or radial gradient as background or border, check our [CSS Gradient Generator](#).

Hey! You found this booklet interesting? Support Converting Colors with the new Membership Option!

The pro membership hides all ads, plus gives you double the colors in the color bucket, and more awesome pro features!

[Learn more, Memberships starting at \\$2.50/m!](#)

**Follow me
on Twitter!**

@ConvertingColor