

# Converting Colors

Hex(E3BCB2)

Have a look what the booklet for  
Hex(E3BCB2) contains.

<b>Hex(E3BCB2)</b> .....	3
<i><b>Conversions</b></i> .....	4
<i><b>Details</b></i> .....	6
<i><b>Harmonies</b></i> .....	11
<i><b>Previews</b></i> .....	23
<i><b>Color Blindness Simulation</b></i> .....	26
<i><b>CSS Examples</b></i> .....	29

# **Color**

**Hex(E3BCB2)**

# Conversions

## Conversions Part 1

Format	Color
Hex	E3BCB2
RGB	227, 188, 178
RGB Percent	89%, 74%, 70%
CMY	0.1098, 0.2627, 0.3020
CMYK	0.00, 0.17, 0.22, 0.11
HSL	12°, 47%, 79%
HSV	12°, 22%, 89%
XYZ	57.6977, 55.5117, 49.7933
YIQ	198.5210, 26.4540, 5.1580

# Conversions

## Conversions Part 2

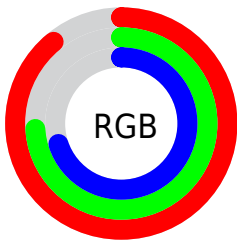
Format	Color
<a href="#">RYB</a>	<a href="#">227, 191, 178</a>
Decimal	<a href="#">14924978</a>
CIELab	<a href="#">79.34, 12.43, 10.28</a>
CIELCh	<a href="#">79, 16.135, 39.595</a>
Yxy	<a href="#">55.5117, 0.3540, 0.3406</a>
Android (android.graphics.Color)	<a href="#">4293115058 (0xFFE3BCB2)</a>
YUV	<a href="#">198.5210, -10.1169, 24.9761</a>
Hunter-Lab	<a href="#">74.5062, 7.8448, 12.5301</a>

# Details

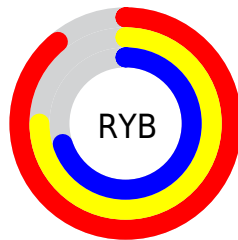
The Hex color **E3BCB2** is a light color, and the websafe version is hex **FFCCCC**. A complement of this color would be **B2D9E3**, and the grayscale version is **C7C7C7**.

A 20% lighter version of the original color is **FFF4EA**, and **AB877D** is the 20% darker color. If you saturate the color by 10%, you get **E3AA9B**, and if you desaturate by 10%, it is **E3CEC9**.

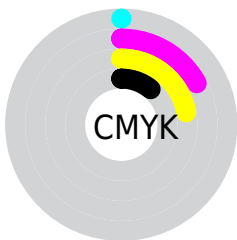
# Distribution



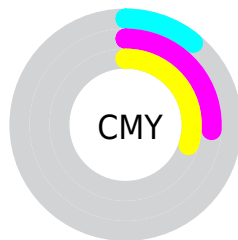
- Red (89%)
- Green (74%)
- Blue (70%)



- Red (89%)
- Yellow (75%)
- Blue (70%)



- Cyan (0%)
- Magenta (17%)
- Yellow (22%)
- Black (11%)



- Cyan (11%)
- Magenta (26%)
- Yellow (30%)

# Brightness & Saturation Gradients

These gradients show how the Hex color E3BCB2 changes by changing the brightness by 10 percent. The first figure shows a shift by +10% for each color and the second figure -10%.

Similar to the brightness gradients but the following saturation gradients show a change of the Hex color E3BCB2 by changing the saturation by 10% instead.



 E3BCB2

 E3BCB2

FFFFFF

 C7A197

 FFF4EA

 AB877D

 906D64

 76554D

 5D3E36

 442820

 2D130A

 150000

 000000

 E3BCB2

 E3BCB2

 E3AA9B

 E3CEC9

 E39885

 E3E0DF

 E3866E

 E3F2F6

 E37457

 E3FFFF

 E36241

 E3502A

 E33E13

 E32E00

# Harmonies

## Analogous

The Analogous color harmony consists of three colors that are next to each other on the color wheel.



E4BAC0



E3BCB2



DAC0A9

# Triad

The Triadic color harmony groups three colors that are evenly spaced from another and form a triangle on the color wheel.



E3BCB2



AACCBA



BAC4E2

# Complementary

The Complementary color scheme is a pair of colors which are on the opposite of each other on the color wheel.



E3BCB2



B2D9E3

# Split Complementary

Split-complementary colors differ from the complementary color scheme. The scheme consists of three colors, the original color and two neighbors of the complement color.



A9C9E0



E3BCB2



9FCDC9

# Square

The Square scheme is like the rectangle color scheme, but the four colors are evenly spaced on the color wheel.



E3BCB2



BAC9AD



9FCCD7



CDBFDC

# Rectangle

The Rectangle color scheme consists of four colors that form a rectangle on the color wheel.



E3BCB2



D1C3A7



9FCCD7



B4C6E2

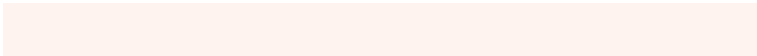


# Sweetspot

The Sweet Spot groups the original color and five complimentary colors.



E3BCB2



FFF3F0



E3B2D9



807877



000000



808080



# Same Dimension

The Same Dimension uses a secret algorithm to generate beautiful new colors.



E3BCB2



FFCABD



E3D4B2



736A67



B32400



330A00

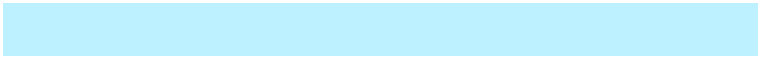


# Inverse Universe

The Inverse Universe completely reimagines the original color for something new.



B2D9E3



BDF1FF



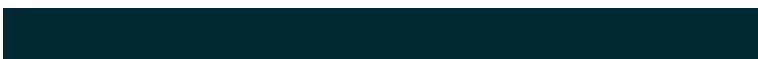
B2C1E3



677073



008EB3

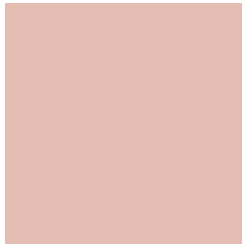


002933



# Previews

## White Background



This preview shows how the Hex color E3BCB2 looks on a white background.

## Color Contrast Check

Large Text (above 18pt) WCAG AA × Fail

Any Text WCAG AA × Fail

Large Text (above 18pt) WCAG AAA × Fail

Any Text WCAG AAA × Fail

# Black Background



This preview shows how the Hex color E3BCB2 looks on a black background.

## Color Contrast Check

Large Text (above 18pt) WCAG AA ✓ Pass

Any Text WCAG AA ✓ Pass

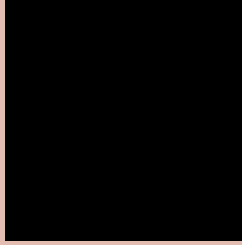
Large Text (above 18pt) WCAG AAA ✓ Pass

Any Text WCAG AAA ✓ Pass

If you want to check with other color combinations, try the [Color Contrast Checker](#).



## Hex E3BCB2 Background



This preview shows how black text looks on a background with the Hex color E3BCB2.



This preview shows how white text looks on a background with the Hex color E3BCB2.

# Color Blindness Simulation

Color vision deficiency is a very complex topic, and I could not describe the different causes any better than Wikipedia does, so if you want to learn more, you should check out their [article about color blindness](#).

## Dichromacy



**Original Color**  
E3BCB2

**Protanopia**  
CCC4B6

**Deuteranopia**  
DFBEB2



**Tritanopia**  
E6B9C7

# Trichromacy



**Original Color**  
E3BCB2

**Protanomaly**  
D4C1B5

**Deuteranomaly**  
E0BDB2

**Tritanomaly**  
E5BABF

# Monochromacy



**Original Color**  
E3BCB2

**Achromatopsia**  
C7C7C7

**Achromatomaly**  
D1C3BF

# CSS Examples

## Text

The CSS property to change the color of the text to Hex E3BCB2 is called "color". The color property can be set on classes, ids or directly on the HTML element.

This example shows how text in the color #E3BCB2 looks like.

```
.text, #text, p{  
    color:#E3BCB2  
}
```

If you want to add a text shadow in that color use the text-shadow property, you can generate a text shadow directly with our [CSS Text Shadow Generator](#).

Here you see how black text with a 4 pixel #E3BCB2 colored shadow looks like.

```
.shadow{ text-shadow: 4px 4px 2px #E3BCB2
}
```

## Border

The CSS property to change the border of an element to Hex E3BCB2 is called "border". The border property can be set on classes, ids or directly on the HTML element.

This example shows the color as border, it can be applied via the CSS property "border" or "border-color".

```
.border, #border, table{ border:4px solid
#E3BCB2 }
```

If only the border color should be changed use the property `border-color`.

```
.border{ border-color:#E3BCB2 }
```

If you want to add a box shadow in that color use:

Here you see how a box with a 4 pixel #E3BCB2 colored shadow looks like.

```
.boxshadow{ -moz-box-shadow:4px 4px 4px  
4px #E3BCB2; -webkit-box-shadow:4px 4px  
4px 4px #E3BCB2; box-shadow:4px 4px 4px  
4px #E3BCB2 }
```

# Background

The CSS property to change the background color of an element to Hex E3BCB2 is called "background". The background property can be set on classes, ids or directly on the HTML element.

```
.background, #background, body{  
background:#E3BCB2 }
```

If only the background color should be changed can be used:

```
.background{ background-color:#E3BCB2 }
```

This example shows the color as background, it is applied via the CSS property "background".

To optimize and compress your CSS code, you can use our [online CSS compressor and optimizer](#) based on csstidy. If you want to create a linear or radial gradient as background or border, check our [CSS Gradient Generator](#).



Hey! You found this booklet interesting? Support Converting Colors with the new Membership Option!

The pro membership hides all ads, plus gives you double the colors in the color bucket, and more awesome pro features!

**[Learn more, Memberships starting at \\$2.50/m!](#)**

**Follow me  
on Twitter!**

@ConvertingColor