

Converting Colors

Hex(E3BCBC)

Have a look what the booklet for
Hex(E3BCBC) contains.

Hex(E3BCBC)	3
<i>Conversions</i>	4
<i>Details</i>	6
<i>Harmonies</i>	11
<i>Previews</i>	23
<i>Color Blindness Simulation</i>	26
<i>CSS Examples</i>	29

Color

Hex(E3BCBC)

Conversions

Conversions Part 1

Format	Color
Hex	E3BCBC
RGB	227, 188, 188
RGB Percent	89%, 74%, 74%
CMY	0.1098, 0.2627, 0.2627
CMYK	0.00, 0.17, 0.17, 0.11
HSL	0°, 41%, 81%
HSV	0°, 17%, 89%
XYZ	58.7389, 55.9282, 55.2763
YIQ	199.6610, 23.2440, 8.2680

Conversions

Conversions Part 2

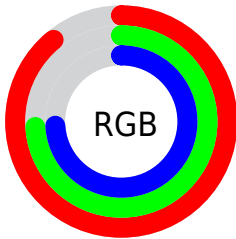
Format	Color
R_{YB}	227, 188, 188
Decimal	14924988
CIE _{Lab}	79.57, 13.94, 5.23
CIE _{LCh}	80, 14.889, 20.579
Yxy	55.9282, 0.3456, 0.3291
Android (android.graphics.Color)	4293115068 (0xFFE3BCBC)
YUV	199.6610, -5.7489, 23.9763
Hunter-Lab	74.7851, 9.3262, 8.5263

Details

The Hex color **E3BCBC** is a light color, and the websafe version is hex **FFCCCC**. A complement of this color would be **BCE3E3**, and the grayscale version is **C8C8C8**.

A 20% lighter version of the original color is **FFF4F4**, and **AB8787** is the 20% darker color. If you saturate the color by 10%, you get **E3A5A5**, and if you desaturate by 10%, it is **E3D3D3**.

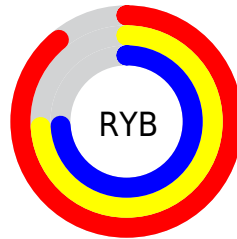
Distribution



Red (89%)

Green (74%)

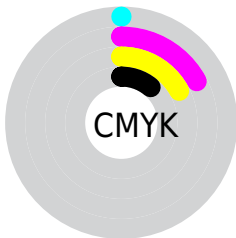
Blue (74%)



Red (89%)

Yellow (74%)

Blue (74%)

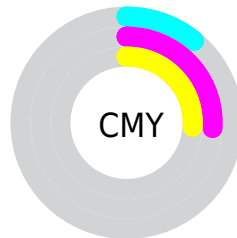


Cyan (0%)

Magenta (17%)

Yellow (17%)

Black (11%)



Cyan (11%)

Magenta (26%)

Yellow (26%)

Brightness & Saturation Gradients

These gradients show how the Hex color E3BCBC changes by changing the brightness by 10 percent. The first figure shows a shift by +10% for each color and the second figure -10%.

Similar to the brightness gradients but the following saturation gradients show a change of the Hex color E3BCBC by changing the saturation by 10% instead.

 E3BCBC

FFFFFF

 FFF4F4

 E3BCBC

 C7A1A1

 AB8787

 906D6E

 765555

 5D3D3E

 452728

 2D1314

 190001

 000000

 E3BCBC

 E3BCBC

 E3A5A5

 E3D3D3

 E38F8F

 E3E9E9

 E37878

 E3FFFF

 E36161

 E34B4B

 E33434

 E31D1D

 E30606

 E30000

Harmonies

Analogous

The Analogous color harmony consists of three colors that are next to each other on the color wheel.



DFBCCA



E3BCBC



DFBFB0

Triad

The Triadic color harmony groups three colors that are evenly spaced from another and form a triangle on the color wheel.



E3BCBC



B6CBB3



B1C8E0

Complementary

The Complementary color scheme is a pair of colors which are on the opposite of each other on the color wheel.



E3BCBC



BCE3E3

Split Complementary

Split-complementary colors differ from the complementary color scheme. The scheme consists of three colors, the original color and two neighbors of the complement color.



A5CBDA



E3BCBC



A9CDC0

Square

The Square scheme is like the rectangle color scheme, but the four colors are evenly spaced on the color wheel.



E3BCBC



C6C7AB



A2CDCE



C2C3DF

Rectangle

The Rectangle color scheme consists of four colors that form a rectangle on the color wheel.



E3BCBC



D9C1AB



A2CDCE



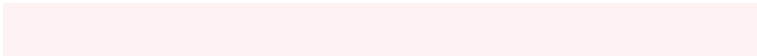
ACC9DF

Sweetspot

The Sweet Spot groups the original color and five complimentary colors.



E3BCBC



FFF2F2



E3BCE3



807878



000000



808080

Same Dimension

The Same Dimension uses a secret algorithm to generate beautiful new colors.



E3BCBC



FFC9C9



E3D0BC



736767



B30000



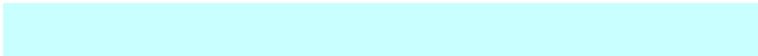
330000

Inverse Universe

The Inverse Universe completely reimagines the original color for something new.



BCE3E3



C9FFFF



BCD0E3



677373



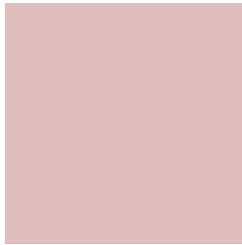
00B3B3



003333

Previews

White Background



This preview shows how the Hex color E3BCBC looks on a white background.

Color Contrast Check

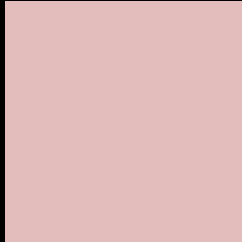
Large Text (above 18pt) WCAG AA × Fail

Any Text WCAG AA × Fail

Large Text (above 18pt) WCAG AAA × Fail

Any Text WCAG AAA × Fail

Black Background



This preview shows how the Hex color E3BCBC looks on a black background.

Color Contrast Check

Large Text (above 18pt) WCAG AA ✓ Pass

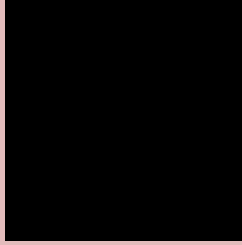
Any Text WCAG AA ✓ Pass

Large Text (above 18pt) WCAG AAA ✓ Pass

Any Text WCAG AAA ✓ Pass

If you want to check with other color combinations, try the [Color Contrast Checker](#).

Hex E3BCBC Background



This preview shows how black text looks on a background with the Hex color E3BCBC.

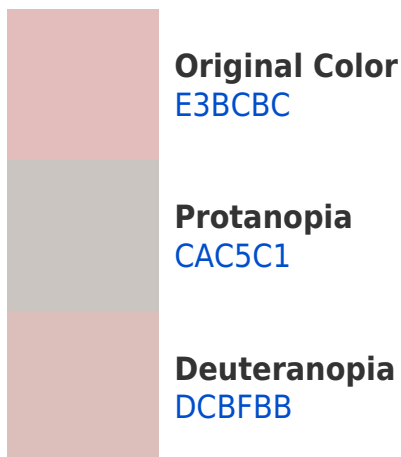



This preview shows how white text looks on a background with the Hex color E3BCBC.

Color Blindness Simulation

Color vision deficiency is a very complex topic, and I could not describe the different causes any better than Wikipedia does, so if you want to learn more, you should check out their [article about color blindness](#).

Dichromacy



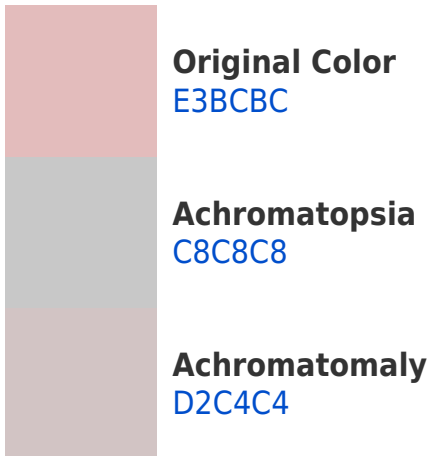


Tritanopia
E5BAC9

Trichromacy



Monochromacy



CSS Examples

Text

The CSS property to change the color of the text to Hex E3BCBC is called "color". The color property can be set on classes, ids or directly on the HTML element.

This example shows how text in the color #E3BCBC looks like.

```
.text, #text, p{  
    color:#E3BCBC  
}
```

If you want to add a text shadow in that color use the text-shadow property, you can generate a text shadow directly with our [CSS Text Shadow Generator](#).

Here you see how black text with a 4 pixel #E3BCBC colored shadow looks like.

```
.shadow{ text-shadow: 4px 4px 2px #E3BCBC }  
}
```

Border

The CSS property to change the border of an element to Hex E3BCBC is called "border". The border property can be set on classes, ids or directly on the HTML element.

This example shows the color as border, it can be applied via the CSS property "border" or "border-color".

```
.border, #border, table{ border:4px solid #E3BCBC }  
}
```

If only the border color should be changed use the property `border-color`.

```
.border{ border-color:#E3BCBC }
```

If you want to add a box shadow in that color use:

Here you see how a box with a 4 pixel #E3BCBC colored shadow looks like.

```
.boxshadow{ -moz-box-shadow:4px 4px 4px  
4px #E3BCBC; -webkit-box-shadow:4px 4px  
4px 4px #E3BCBC; box-shadow:4px 4px 4px  
4px #E3BCBC }
```

Background

The CSS property to change the background color of an element to Hex E3BCBC is called "background". The background property can be set on classes, ids or directly on the HTML element.

```
.background, #background, body{  
background:#E3BCBC }
```

If only the background color should be changed can be used:

```
.background{ background-color:#E3BCBC }
```

This example shows the color as background, it is applied via the CSS property "background".

To optimize and compress your CSS code, you can use our [online CSS compressor and optimizer](#) based on csstidy. If you want to create a linear or radial gradient as background or border, check our [CSS Gradient Generator](#).

Hey! You found this booklet interesting? Support Converting Colors with the new Membership Option!

The pro membership hides all ads, plus gives you double the colors in the color bucket, and more awesome pro features!

[Learn more, Memberships starting at \\$2.50/m!](#)

**Follow me
on Twitter!**

@ConvertingColor