

Converting Colors

Hex(E3BEA1)

Have a look what the booklet for
Hex(E3BEA1) contains.

Hex(E3BEA1)	3
<i>Conversions</i>	4
<i>Details</i>	6
<i>Harmonies</i>	11
<i>Previews</i>	23
<i>Color Blindness Simulation</i>	26
<i>CSS Examples</i>	29

Color

Hex(E3BEA1)

Conversions

Conversions Part 1

Format	Color
Hex	E3BEA1
RGB	227, 190, 161
RGB Percent	89%, 75%, 63%
CMY	0.1098, 0.2549, 0.3686
CMYK	0.00, 0.16, 0.29, 0.11
HSL	26°, 54%, 76%
HSV	26°, 29%, 89%
XYZ	56.5250, 55.7310, 41.4962
YIQ	197.7570, 31.3610, -1.1750

Conversions

Conversions Part 2

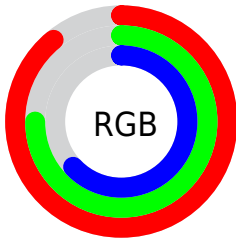
Format	Color
R_{YB}	227, 213, 161
Decimal	14925473
CIE _{Lab}	79.46, 9.00, 19.58
CIE _{LCh}	79, 21.554, 65.306
Yxy	55.7310, 0.3676, 0.3625
Android (android.graphics.Color)	4293115553 (0xFFE3BEA1)
YUV	197.7570, -18.1212, 25.6461
Hunter-Lab	74.6532, 4.5114, 19.3007

Details

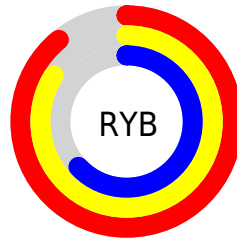
The Hex color **E3BEA1** is a light color, and the websafe version is hex **FFCC99**. A complement of this color would be **A1C6E3**, and the grayscale version is **C6C6C6**.

A 20% lighter version of the original color is **FFF6D8**, and **AB896D** is the 20% darker color. If you saturate the color by 10%, you get **E3B18A**, and if you desaturate by 10%, it is **E3CBB8**.

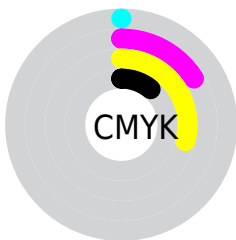
Distribution



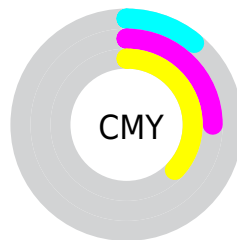
- Red (89%)
- Green (75%)
- Blue (63%)



- Red (89%)
- Yellow (84%)
- Blue (63%)



- Cyan (0%)
- Magenta (16%)
- Yellow (29%)
- Black (11%)



- Cyan (11%)
- Magenta (25%)
- Yellow (37%)

Brightness & Saturation Gradients

These gradients show how the Hex color E3BEA1 changes by changing the brightness by 10 percent. The first figure shows a shift by +10% for each color and the second figure -10%.

Similar to the brightness gradients but the following saturation gradients show a change of the Hex color E3BEA1 by changing the saturation by 10% instead.

 E3BEA1

FFFFFF

 FFF6D8

 FFFFF4

 E3BEA1

 C7A387

 AB896D

 906F55

 75573E

 5C4027

 432A13

 2C1500

 100000

 000000

 E3BEA1

 E3BEA1

 E3B18A

 E3CBB8

 E3A574

 E3D7CE

 E3985D

 E3E4E5

 E38B46

 E3F1FC

 E37E30

 E3FEFF

 E37219

 E3FFFF

 E36502

 E36400

Harmonies

Analogous

The Analogous color harmony consists of three colors that are next to each other on the color wheel.



EDB9AF



E3BEA1



D1C59D

Triad

The Triadic color harmony groups three colors that are evenly spaced from another and form a triangle on the color wheel.



E3BEA1



93D1C8



CDBFE6

Complementary

The Complementary color scheme is a pair of colors which are on the opposite of each other on the color wheel.



E3BEA1



A1C6E3

Split Complementary

Split-complementary colors differ from the complementary color scheme. The scheme consists of three colors, the original color and two neighbors of the complement color.



B2C5EC



E3BEA1



8ECFDB

Square

The Square scheme is like the rectangle color scheme, but the four colors are evenly spaced on the color wheel.



E3BEA1



A4CFB3



9BCBE9



E2B9D6

Rectangle

The Rectangle color scheme consists of four colors that form a rectangle on the color wheel.



E3BEA1



C2C9A0



9BCBE9



C4C1E9

Sweetspot

The Sweet Spot groups the original color and five complimentary colors.



E3BEA1



FFF2E8



E3A1C6



807871



000000



808080

Same Dimension

The Same Dimension uses a secret algorithm to generate beautiful new colors.



E3BEA1



FFCDA6



E3DFA1



736C67



B34E00



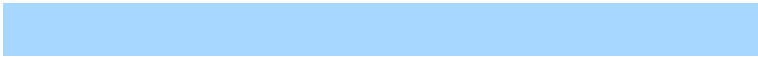
331600

Inverse Universe

The Inverse Universe completely reimagines the original color for something new.



A1C6E3



A6D8FF



A1A5E3



676E73



0064B3



001D33

Previews

White Background



This preview shows how the Hex color E3BEA1 looks on a white background.

Color Contrast Check

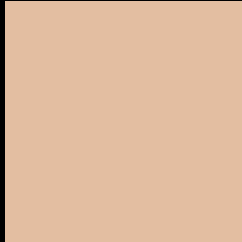
Large Text (above 18pt) WCAG AA × Fail

Any Text WCAG AA × Fail

Large Text (above 18pt) WCAG AAA × Fail

Any Text WCAG AAA × Fail

Black Background



This preview shows how the Hex color E3BEA1 looks on a black background.

Color Contrast Check

Large Text (above 18pt) WCAG AA ✓ Pass

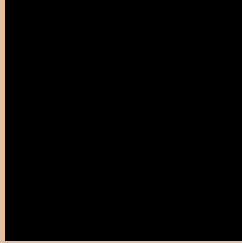
Any Text WCAG AA ✓ Pass

Large Text (above 18pt) WCAG AAA ✓ Pass

Any Text WCAG AAA ✓ Pass

If you want to check with other color combinations, try the [Color Contrast Checker](#).

Hex E3BEA1 Background



This preview shows how black text looks on a background with the Hex color E3BEA1.

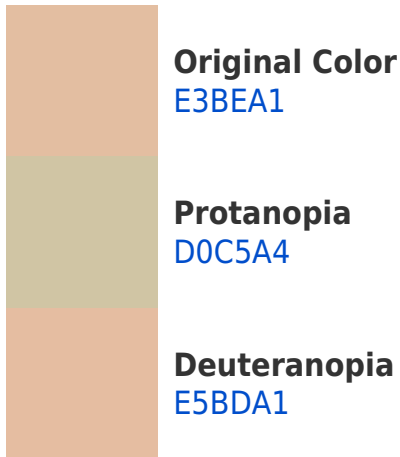


This preview shows how white text looks on a background with the Hex color E3BEA1.

Color Blindness Simulation

Color vision deficiency is a very complex topic, and I could not describe the different causes any better than Wikipedia does, so if you want to learn more, you should check out their [article about color blindness](#).

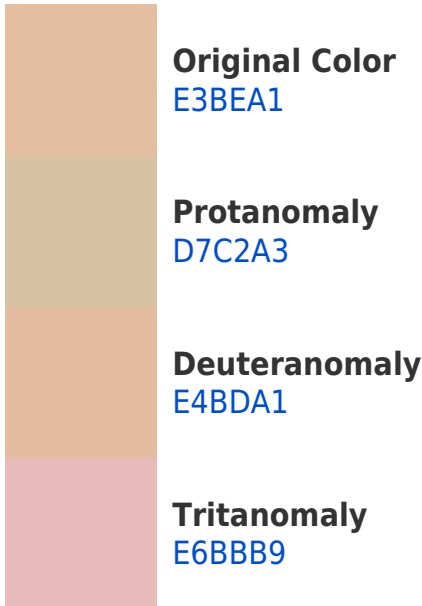
Dichromacy





Tritanopia
E7B9C7

Trichromacy



Monochromacy



CSS Examples

Text

The CSS property to change the color of the text to Hex E3BEA1 is called "color". The color property can be set on classes, ids or directly on the HTML element.

This example shows how text in the color #E3BEA1 looks like.

```
.text, #text, p{  
    color:#E3BEA1  
}
```

If you want to add a text shadow in that color use the text-shadow property, you can generate a text shadow directly with our [CSS Text Shadow Generator](#).

Here you see how black text with a 4 pixel #E3BEA1 colored shadow looks like.

```
.shadow{ text-shadow: 4px 4px 2px #E3BEA1
}
```

Border

The CSS property to change the border of an element to Hex E3BEA1 is called "border". The border property can be set on classes, ids or directly on the HTML element.

This example shows the color as border, it can be applied via the CSS property "border" or "border-color".

```
.border, #border, table{ border:4px solid
#E3BEA1 }
```

If only the border color should be changed use the property `border-color`.

```
.border{ border-color:#E3BEA1 }
```

If you want to add a box shadow in that color use:

Here you see how a box with a 4 pixel #E3BEA1 colored shadow looks like.

```
.boxshadow{ -moz-box-shadow:4px 4px 4px  
4px #E3BEA1; -webkit-box-shadow:4px 4px  
4px 4px #E3BEA1; box-shadow:4px 4px 4px  
4px #E3BEA1 }
```

Background

The CSS property to change the background color of an element to Hex E3BEA1 is called "background". The background property can be set on classes, ids or directly on the HTML element.

```
.background, #background, body{  
background:#E3BEA1 }
```

If only the background color should be changed can be used:

```
.background{ background-color:#E3BEA1 }
```

This example shows the color as background, it is applied via the CSS property "background".

To optimize and compress your CSS code, you can use our [online CSS compressor and optimizer](#) based on csstidy. If you want to create a linear or radial gradient as background or border, check our [CSS Gradient Generator](#).

Hey! You found this booklet interesting? Support Converting Colors with the new Membership Option!

The pro membership hides all ads, plus gives you double the colors in the color bucket, and more awesome pro features!

[Learn more, Memberships starting at \\$2.50/m!](#)

**Follow me
on Twitter!**

@ConvertingColor