

Converting Colors

Hex(E3BEA7)

Have a look what the booklet for
Hex(E3BEA7) contains.

| | |
|--|----|
| Hex(E3BEA7) | 3 |
| <i>Conversions</i> | 4 |
| <i>Details</i> | 6 |
| <i>Harmonies</i> | 11 |
| <i>Previews</i> | 23 |
| <i>Color Blindness Simulation</i> | 26 |
| <i>CSS Examples</i> | 29 |

Color

Hex(E3BEA7)

Conversions

Conversions Part 1

| Format | Color |
|-------------|---------------------------|
| Hex | E3BEA7 |
| RGB | 227, 190, 167 |
| RGB Percent | 89%, 75%, 65% |
| CMY | 0.1098, 0.2549, 0.3451 |
| CMYK | 0.00, 0.16, 0.26, 0.11 |
| HSL | 23°, 52%, 77% |
| HSV | 23°, 26%, 89% |
| XYZ | 57.0671, 55.9478, 44.3505 |
| YIQ | 198.4410, 29.4350, 0.6910 |

Conversions

Conversions Part 2

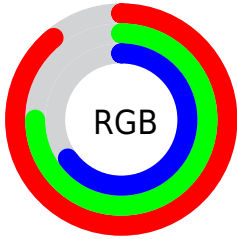
| Format | Color |
|-------------------------------------|--------------------------------|
| R_{YB} | 227, 204, 167 |
| Decimal | 14925479 |
| CIE _{Lab} | 79.58, 9.81, 16.55 |
| CIE _{LCh} | 80, 19.236, 59.331 |
| Yxy | 55.9478, 0.3626, 0.3555 |
| Android (android.graphics.Color) | 4293115559 (0xFFE3BEA7) |
| YUV | 198.4410, -15.5004, 25.0462 |
| Hunter-Lab | 74.7983, 5.2889, 17.2037 |

Details

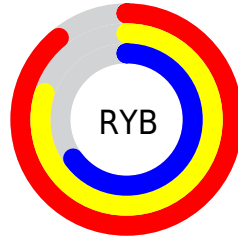
The Hex color **E3BEA7** is a light color, and the websafe version is hex **FFCCCC**. A complement of this color would be **A7CCE3**, and the grayscale version is **C7C7C7**.

A 20% lighter version of the original color is **FFF6DE**, and **AB8973** is the 20% darker color. If you saturate the color by 10%, you get **E3B090**, and if you desaturate by 10%, it is **E3CCBE**.

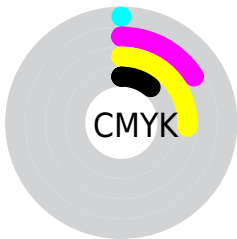
Distribution



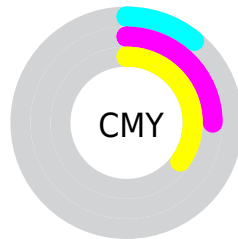
- Red (89%)
- Green (75%)
- Blue (65%)



- Red (89%)
- Yellow (80%)
- Blue (65%)



- Cyan (0%)
- Magenta (16%)
- Yellow (26%)
- Black (11%)



- Cyan (11%)
- Magenta (25%)
- Yellow (35%)

Brightness & Saturation Gradients

These gradients show how the Hex color E3BEA7 changes by changing the brightness by 10 percent. The first figure shows a shift by +10% for each color and the second figure -10%.

Similar to the brightness gradients but the following saturation gradients show a change of the Hex color E3BEA7 by changing the saturation by 10% instead.

 E3BEA7

 E3BEA7

FFFFFF

 C7A38D

 FFF6DE

 AB8973

 FFFFFB

 906F5A

 755743

 5C402C

 432918

 2D1500

 130000

 000000

 E3BEA7

 E3BEA7

 E3B090

 E3CCBE

 E3A27A

 E3DAD4

 E39463

 E3E8EB

 E3864C

 E3F6FF

 E37836

 E3FFFF

 E36A1F

 E35C08

 E35700

Harmonies

Analogous

The Analogous color harmony consists of three colors that are next to each other on the color wheel.



E8B8A4



E3BEA7



D4C4A2

Triad

The Triadic color harmony groups three colors that are evenly spaced from another and form a triangle on the color wheel.



E3BEA7



9CD0C4



C8C1E4

Complementary

The Complementary color scheme is a pair of colors which are on the opposite of each other on the color wheel.



E3BEA7



A7CCE3

Split Complementary

Split-complementary colors differ from the complementary color scheme. The scheme consists of three colors, the original color and two neighbors of the complement color.



B1C7E9



E3BEA7



95CFD6

Square

The Square scheme is like the rectangle color scheme, but the four colors are evenly spaced on the color wheel.



E3BEA7



ACCEB2



9DCCE3



DCBBD8

Rectangle

The Rectangle color scheme consists of four colors that form a rectangle on the color wheel.



E3BEA7



C7C8A3



9DCCE3



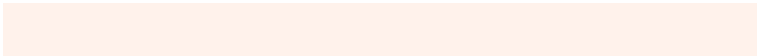
C0C3E7

Sweetspot

The Sweet Spot groups the original color and five complimentary colors.



E3BEA7



FFF2EB



E3A7CC



807873



000000



808080

Same Dimension

The Same Dimension uses a secret algorithm to generate beautiful new colors.



E3BEA7



FFCDAD



E3DCA7



736C67



B34400



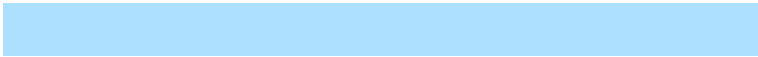
331400

Inverse Universe

The Inverse Universe completely reimagines the original color for something new.



A7CCE3



ADE0FF



A7AEE3



676E73



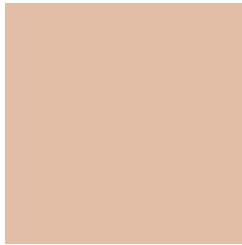
006EB3



001F33

Previews

White Background



This preview shows how the Hex color E3BEA7 looks on a white background.

Color Contrast Check

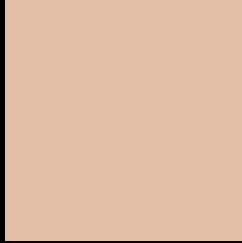
Large Text (above 18pt) WCAG AA × Fail

Any Text WCAG AA × Fail

Large Text (above 18pt) WCAG AAA × Fail

Any Text WCAG AAA × Fail

Black Background



This preview shows how the Hex color E3BEA7 looks on a black background.

Color Contrast Check

Large Text (above 18pt) WCAG AA ✓ Pass

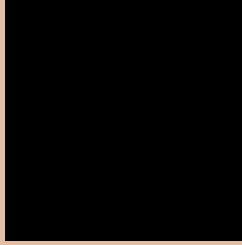
Any Text WCAG AA ✓ Pass

Large Text (above 18pt) WCAG AAA ✓ Pass

Any Text WCAG AAA ✓ Pass

If you want to check with other color combinations, try the [Color Contrast Checker](#).

Hex E3BEA7 Background



This preview shows how black text looks on a background with the Hex color E3BEA7.

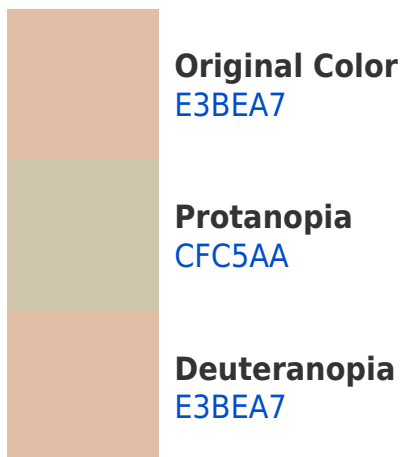


This preview shows how white text looks on a background with the Hex color E3BEA7.

Color Blindness Simulation

Color vision deficiency is a very complex topic, and I could not describe the different causes any better than Wikipedia does, so if you want to learn more, you should check out their [article about color blindness](#).

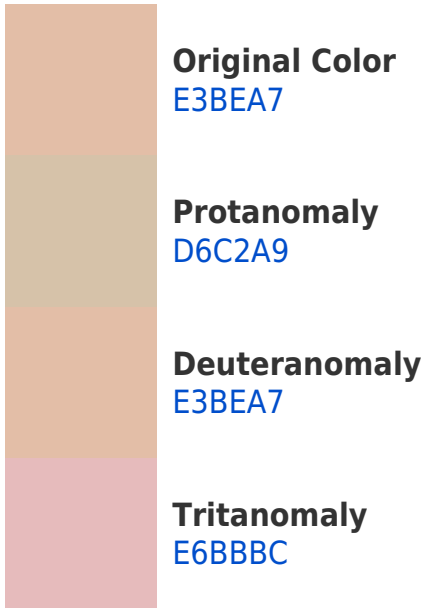
Dichromacy



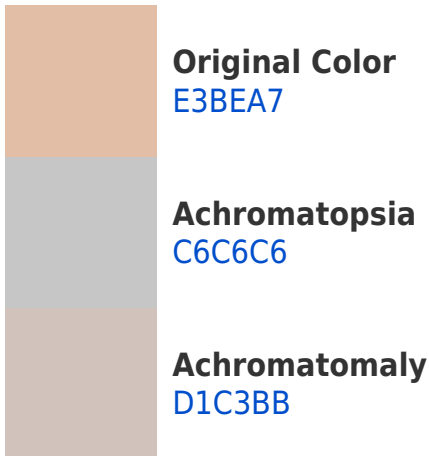


Tritanopia
E7B9C8

Trichromacy



Monochromacy



CSS Examples

Text

The CSS property to change the color of the text to Hex E3BEA7 is called "color". The color property can be set on classes, ids or directly on the HTML element.

This example shows how text in the color #E3BEA7 looks like.

```
.text, #text, p{  
    color:#E3BEA7  
}
```

If you want to add a text shadow in that color use the text-shadow property, you can generate a text shadow directly with our [CSS Text Shadow Generator](#).

Here you see how black text with a 4 pixel #E3BEA7 colored shadow looks like.

```
.shadow{ text-shadow: 4px 4px 2px #E3BEA7
}
```

Border

The CSS property to change the border of an element to Hex E3BEA7 is called "border". The border property can be set on classes, ids or directly on the HTML element.

This example shows the color as border, it can be applied via the CSS property "border" or "border-color".

```
.border, #border, table{ border:4px solid
#E3BEA7 }
```

If only the border color should be changed use the property `border-color`.

```
.border{ border-color:#E3BEA7 }
```

If you want to add a box shadow in that color use:

Here you see how a box with a 4 pixel #E3BEA7 colored shadow looks like.

```
.boxshadow{ -moz-box-shadow:4px 4px 4px  
4px #E3BEA7; -webkit-box-shadow:4px 4px  
4px 4px #E3BEA7; box-shadow:4px 4px 4px  
4px #E3BEA7 }
```

Background

The CSS property to change the background color of an element to Hex E3BEA7 is called "background". The background property can be set on classes, ids or directly on the HTML element.

```
.background, #background, body{  
background:#E3BEA7 }
```

If only the background color should be changed can be used:

```
.background{ background-color:#E3BEA7 }
```

This example shows the color as background, it is applied via the CSS property "background".

To optimize and compress your CSS code, you can use our [online CSS compressor and optimizer](#) based on csstidy. If you want to create a linear or radial gradient as background or border, check our [CSS Gradient Generator](#).

Hey! You found this booklet interesting? Support Converting Colors with the new Membership Option!

The pro membership hides all ads, plus gives you double the colors in the color bucket, and more awesome pro features!

[Learn more, Memberships starting at \\$2.50/m!](#)

**Follow me
on Twitter!**

@ConvertingColor