

Converting Colors

Hex(E3BEB7)

Have a look what the booklet for
Hex(E3BEB7) contains.

Hex(E3BEB7)	3
<i>Conversions</i>	4
<i>Details</i>	6
<i>Harmonies</i>	11
<i>Previews</i>	23
<i>Color Blindness Simulation</i>	26
<i>CSS Examples</i>	29

Color

Hex(E3BEB7)

Conversions

Conversions Part 1

Format	Color
Hex	E3BEB7
RGB	227, 190, 183
RGB Percent	89%, 75%, 72%
CMY	0.1098, 0.2549, 0.2824
CMYK	0.00, 0.16, 0.19, 0.11
HSL	10°, 44%, 80%
HSV	10°, 19%, 89%
XYZ	58.6393, 56.5767, 52.6295
YIQ	200.2650, 24.2990, 5.6670

Conversions

Conversions Part 2

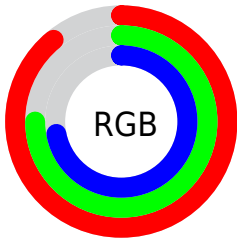
Format	Color
RYB	227, 191, 183
Decimal	14925495
CIELab	79.94, 12.11, 8.46
CIELCh	80, 14.772, 34.921
Yxy	56.5767, 0.3494, 0.3371
Android (android.graphics.Color)	4293115575 (0xFFE3BEB7)
YUV	200.2650, -8.5116, 23.4466
Hunter-Lab	75.2175, 7.5273, 11.1672

Details

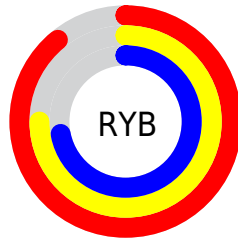
The Hex color **E3BEB7** is a light color, and the websafe version is hex **FFCCCC**. A complement of this color would be **B7DCE3**, and the grayscale version is **C8C8C8**.

A 20% lighter version of the original color is **FFF6EF**, and **AB8982** is the 20% darker color. If you saturate the color by 10%, you get **E3ABA0**, and if you desaturate by 10%, it is **E3D1CE**.

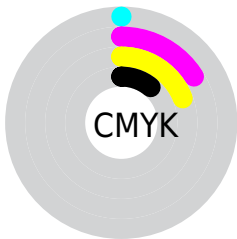
Distribution



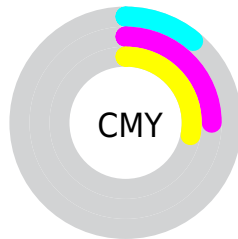
- Red (89%)
- Green (75%)
- Blue (72%)



- Red (89%)
- Yellow (75%)
- Blue (72%)



- Cyan (0%)
- Magenta (16%)
- Yellow (19%)
- Black (11%)



- Cyan (11%)
- Magenta (25%)
- Yellow (28%)

Brightness & Saturation Gradients

These gradients show how the Hex color E3BEB7 changes by changing the brightness by 10 percent. The first figure shows a shift by +10% for each color and the second figure -10%.

Similar to the brightness gradients but the following saturation gradients show a change of the Hex color E3BEB7 by changing the saturation by 10% instead.

 E3BEB7

 E3BEB7

FFFFFF

 C7A39C

 FFF6EF

 AB8982

 906F69

 765751

 5D3F3A

 452924

 2D140F

 180001

 000000

 E3BEB7

 E3BEB7

 E3ABA0

 E3D1CE

 E3988A

 E3E4E4

 E38573

 E3F7FB

 E3725C

 E3FFFF

 E35F46

 E34B2F

 E33818

 E32501

 E32400

Harmonies

Analogous

The Analogous color harmony consists of three colors that are next to each other on the color wheel.



E3BDC4



E3BEB7



DCC1AE

Triad

The Triadic color harmony groups three colors that are evenly spaced from another and form a triangle on the color wheel.



E3BEB7



B0CDBA



BAC7E1

Complementary

The Complementary color scheme is a pair of colors which are on the opposite of each other on the color wheel.



E3BEB7



B7DCE3

Split Complementary

Split-complementary colors differ from the complementary color scheme. The scheme consists of three colors, the original color and two neighbors of the complement color.



ABCBDF



E3BEB7



A6CEC8

Square

The Square scheme is like the rectangle color scheme, but the four colors are evenly spaced on the color wheel.



E3BEB7



BFCAAF



A3CED5



CCC2DD

Rectangle

The Rectangle color scheme consists of four colors that form a rectangle on the color wheel.



E3BEB7



D4C4AB



A3CED5



B5C8E1

Sweetspot

The Sweet Spot groups the original color and five complimentary colors.



E3BEB7



FFF2F0



E3B7DC



807877



000000



808080

Same Dimension

The Same Dimension uses a secret algorithm to generate beautiful new colors.



E3BEB7



FFCEC4



E3D4B7



736967



B31C00



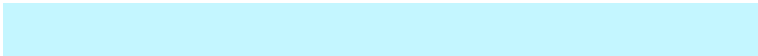
330800

Inverse Universe

The Inverse Universe completely reimagines the original color for something new.



B7DCE3



C4F6FF



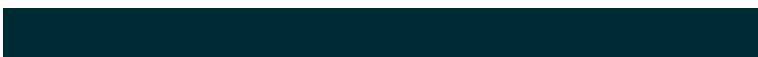
B7C6E3



677173



0096B3



002B33

Previews

White Background



This preview shows how the Hex color E3BEB7 looks on a white background.

Color Contrast Check

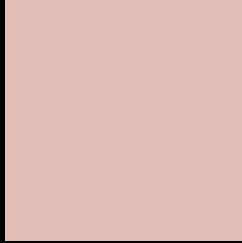
Large Text (above 18pt) WCAG AA × Fail

Any Text WCAG AA × Fail

Large Text (above 18pt) WCAG AAA × Fail

Any Text WCAG AAA × Fail

Black Background



This preview shows how the Hex color E3BEB7 looks on a black background.

Color Contrast Check

Large Text (above 18pt) WCAG AA ✓ Pass

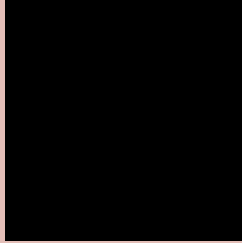
Any Text WCAG AA ✓ Pass

Large Text (above 18pt) WCAG AAA ✓ Pass

Any Text WCAG AAA ✓ Pass

If you want to check with other color combinations, try the [Color Contrast Checker](#).

Hex E3BEB7 Background



This preview shows how black text looks on a background with the Hex color E3BEB7.

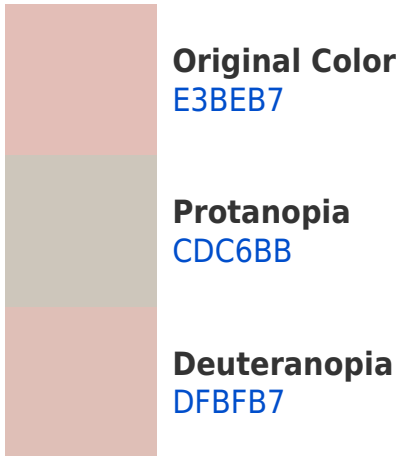


This preview shows how white text looks on a background with the Hex color E3BEB7.

Color Blindness Simulation

Color vision deficiency is a very complex topic, and I could not describe the different causes any better than Wikipedia does, so if you want to learn more, you should check out their [article about color blindness](#).

Dichromacy





Tritanopia
E5BBCA

Trichromacy



Original Color
E3BEB7

Protanomaly
D5C3BA

Deuteranomaly
E0BFB7

Tritanomaly
E4BCC3

Monochromacy



Original Color
E3BEB7

Achromatopsia
C8C8C8

Achromatomaly
D2C4C2

CSS Examples

Text

The CSS property to change the color of the text to Hex E3BEB7 is called "color". The color property can be set on classes, ids or directly on the HTML element.

This example shows how text in the color #E3BEB7 looks like.

```
.text, #text, p{  
    color:#E3BEB7  
}
```

If you want to add a text shadow in that color use the text-shadow property, you can generate a text shadow directly with our [CSS Text Shadow Generator](#).

Here you see how black text with a 4 pixel #E3BEB7 colored shadow looks like.

```
.shadow{ text-shadow: 4px 4px 2px #E3BEB7
}
```

Border

The CSS property to change the border of an element to Hex E3BEB7 is called "border". The border property can be set on classes, ids or directly on the HTML element.

This example shows the color as border, it can be applied via the CSS property "border" or "border-color".

```
.border, #border, table{ border:4px solid
#E3BEB7 }
```

If only the border color should be changed use the property `border-color`.

```
.border{ border-color:#E3BEB7 }
```

If you want to add a box shadow in that color use:

Here you see how a box with a 4 pixel #E3BEB7 colored shadow looks like.

```
.boxshadow{ -moz-box-shadow:4px 4px 4px  
4px #E3BEB7; -webkit-box-shadow:4px 4px  
4px 4px #E3BEB7; box-shadow:4px 4px 4px  
4px #E3BEB7 }
```

Background

The CSS property to change the background color of an element to Hex E3BEB7 is called "background". The background property can be set on classes, ids or directly on the HTML element.

```
.background, #background, body{  
background:#E3BEB7 }
```

If only the background color should be changed can be used:

```
.background{ background-color:#E3BEB7 }
```

This example shows the color as background, it is applied via the CSS property "background".

To optimize and compress your CSS code, you can use our [online CSS compressor and optimizer](#) based on csstidy. If you want to create a linear or radial gradient as background or border, check our [CSS Gradient Generator](#).

Hey! You found this booklet interesting? Support Converting Colors with the new Membership Option!

The pro membership hides all ads, plus gives you double the colors in the color bucket, and more awesome pro features!

[Learn more, Memberships starting at \\$2.50/m!](#)

**Follow me
on Twitter!**

@ConvertingColor